



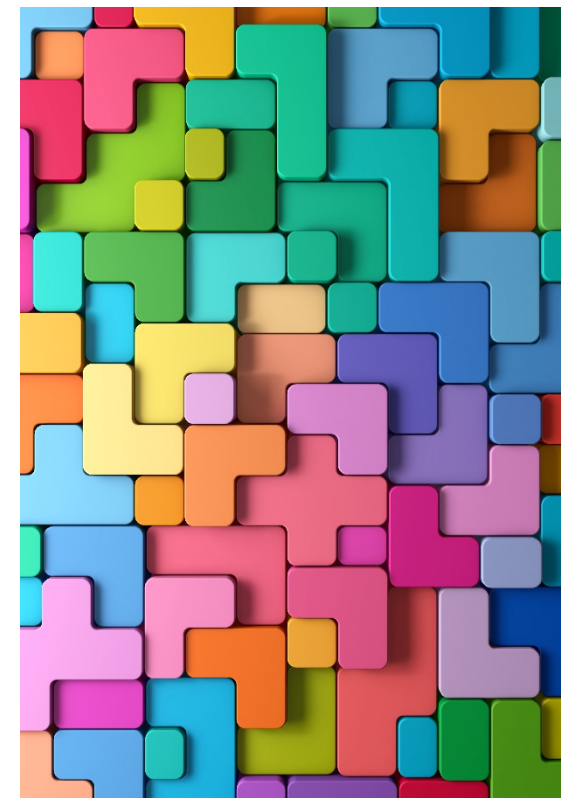
Contracts & Compliance Update

**Daniel Deniz, Branch Chief
Finance Services Branch
Michelle Palmer, Manager
Compliance Management Unit**

Contracts and Compliance Update

Master Audit Plan - Approach

- Leverage non-SAPC monitoring activities
- Incorporate efficiencies
- Be data-driven and focused
- Move from “Monitoring” to “Management” model



Contracts and Compliance Update

Master Audit Plan – Leverage non-SAPC Monitoring

- Los Angeles County Auditor-Controller
 - ✓ Fiscal Compliance Review
- Complaints, Investigations, etc.

SAPC is responsible for all corrective actions.



Contracts and Compliance Update

Master Audit Plan – Data-Driven and Focused

- Monitoring Reports = Report Letter with brief annotation of deficiencies
- Request information and documentation
- Use of Secure File Transport Process (SFTP)
- Greatly increase remote monitoring



Contracts and Compliance Update

Master Audit Plan – Move from Monitoring to Management Model/Approach

- Create monthly compliance activities some relevant to Prevention activities
- Incorporate feedbacks and input from other SAPC Sections
- Increase monitoring reports & corrective action plan (CAP) opportunities





FY 2021-22 Master Audit Plan

Key Components

- Establish a year-long schedule for all compliance management activities
- All activities will be conducted remotely with the exceptions of facility inspections & as-needed monitoring and/or investigations

July

Personnel

- Training requirements
- Evaluations
- Acknowledgements

November

Administrative

- Licensing
- Policies & Procedures
- Board of Directors

January

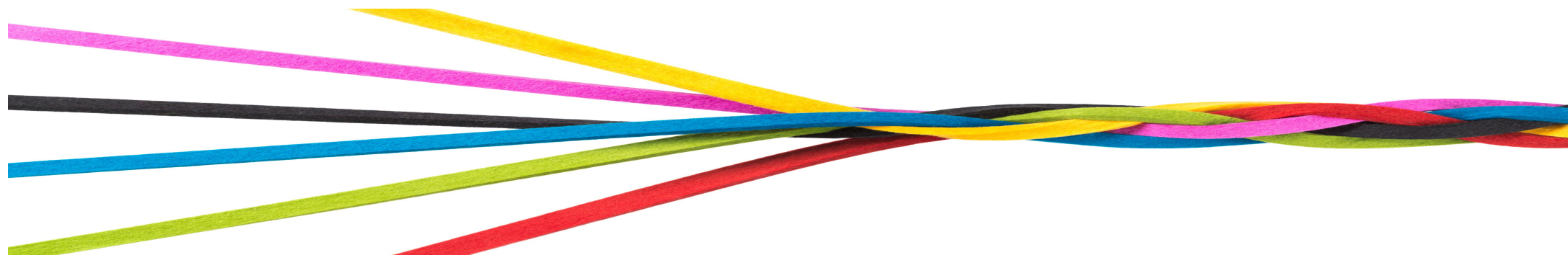
Programmatic

- Proof of Services
- Sign in sheets
- Flyers

FY 2021-22 Master Audit Plan

Key Components

- Contract Program Auditors (CPA) will request documents to conduct compliance activities
- Information/Document sharing will be conducted using the SFTP
- Establish a single CAP per agency that will capture “open” and “resolved” issues





Contracts and Compliance Update

THANK YOU!