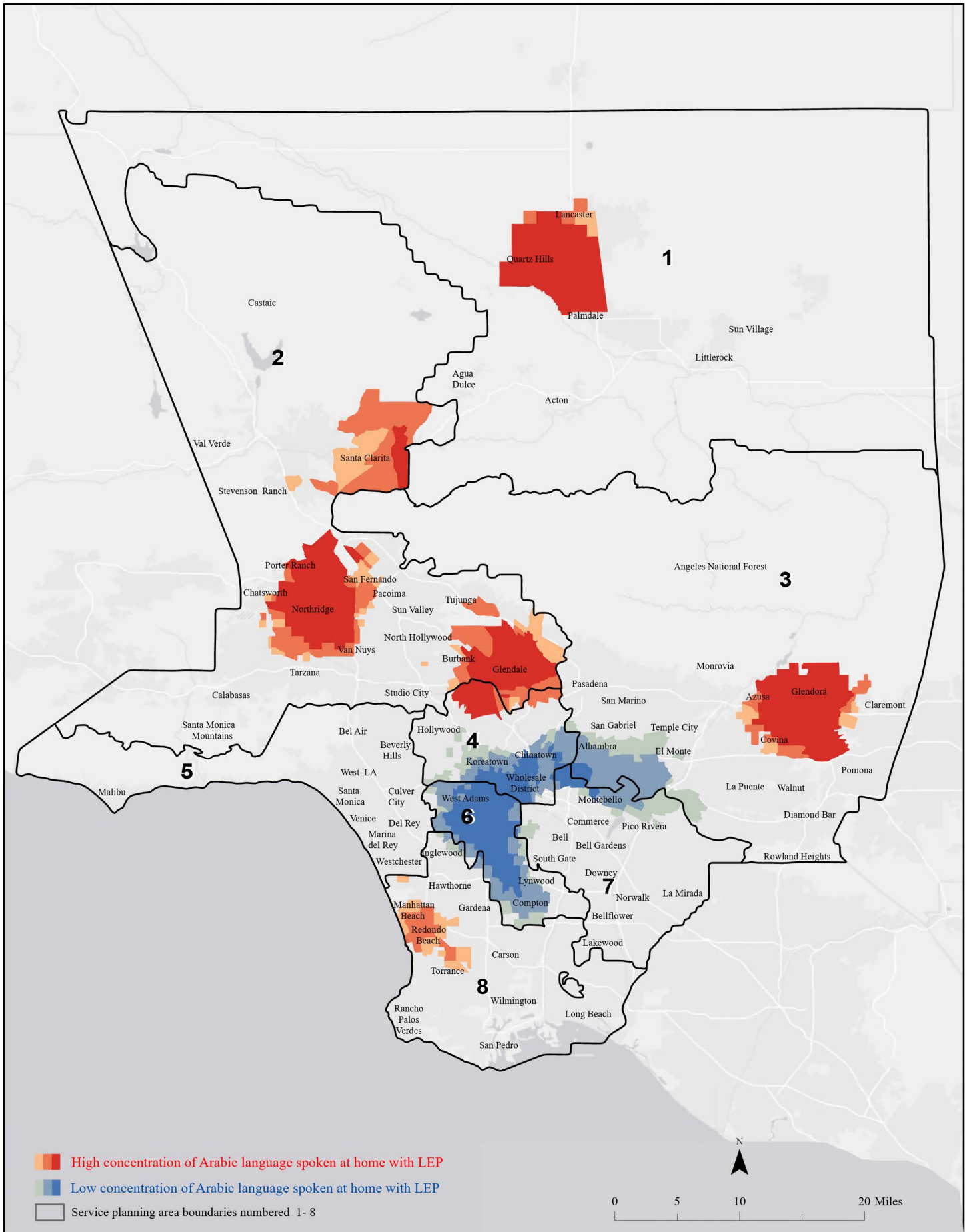


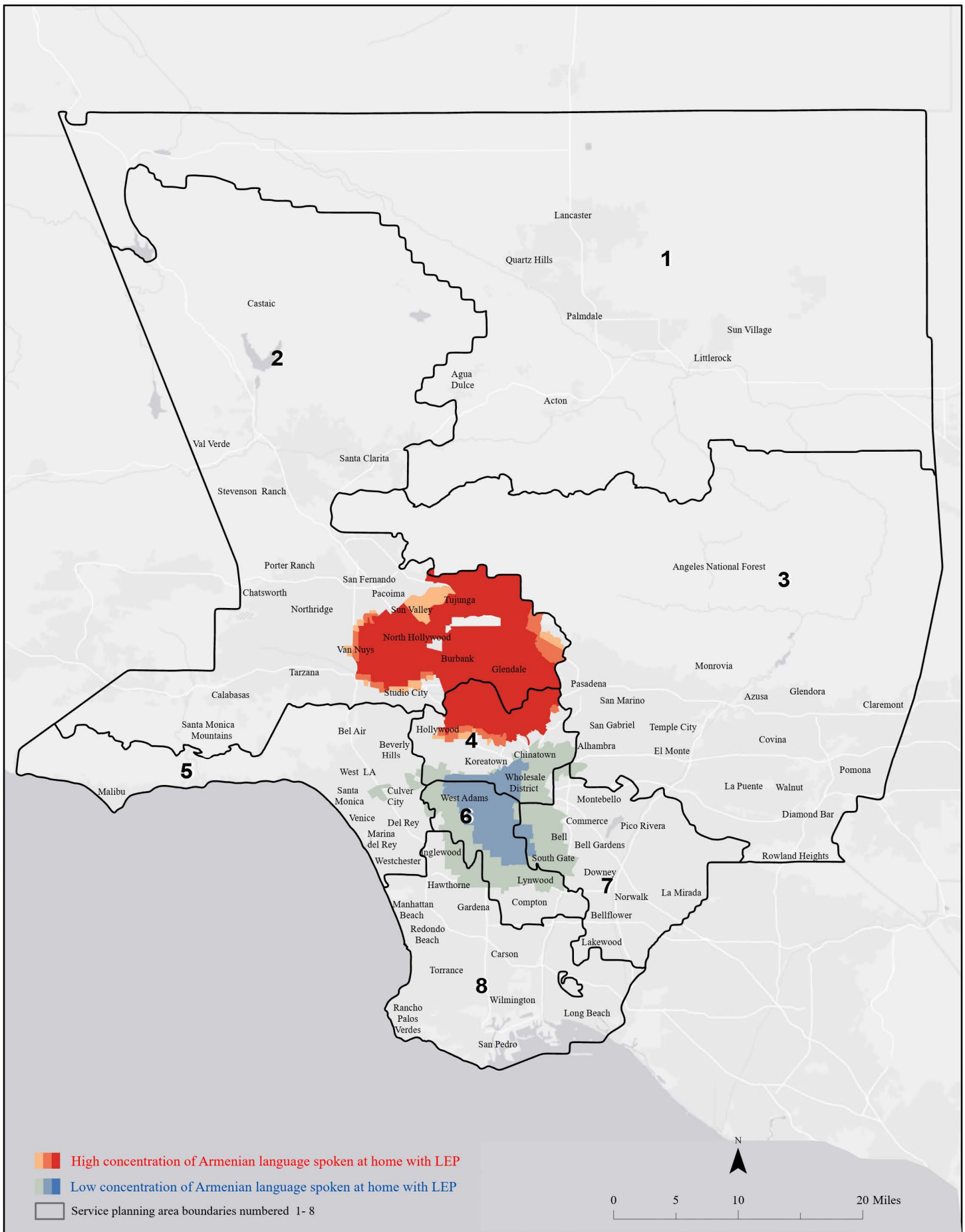
Arabic Language Spoken at Home With Limited English Proficiency (LEP) for the Population of 5 Years and Older (Hot Spot Areas)



Data sources: SPA boundary retrieved from LAC eGIS repository updated 2022. 2021 language spoken at home by limited English Proficiency (those who reported to speak English less than very well) for the population 5 years and over obtained from American Community Survey 5-Year Estimates processed and map produced by GIS section, Health Outcomes and Data Analytics (HODA) at SAPC.

Contact: Any questions for the map contact Tina Kim at tkim@ph.lacounty.gov

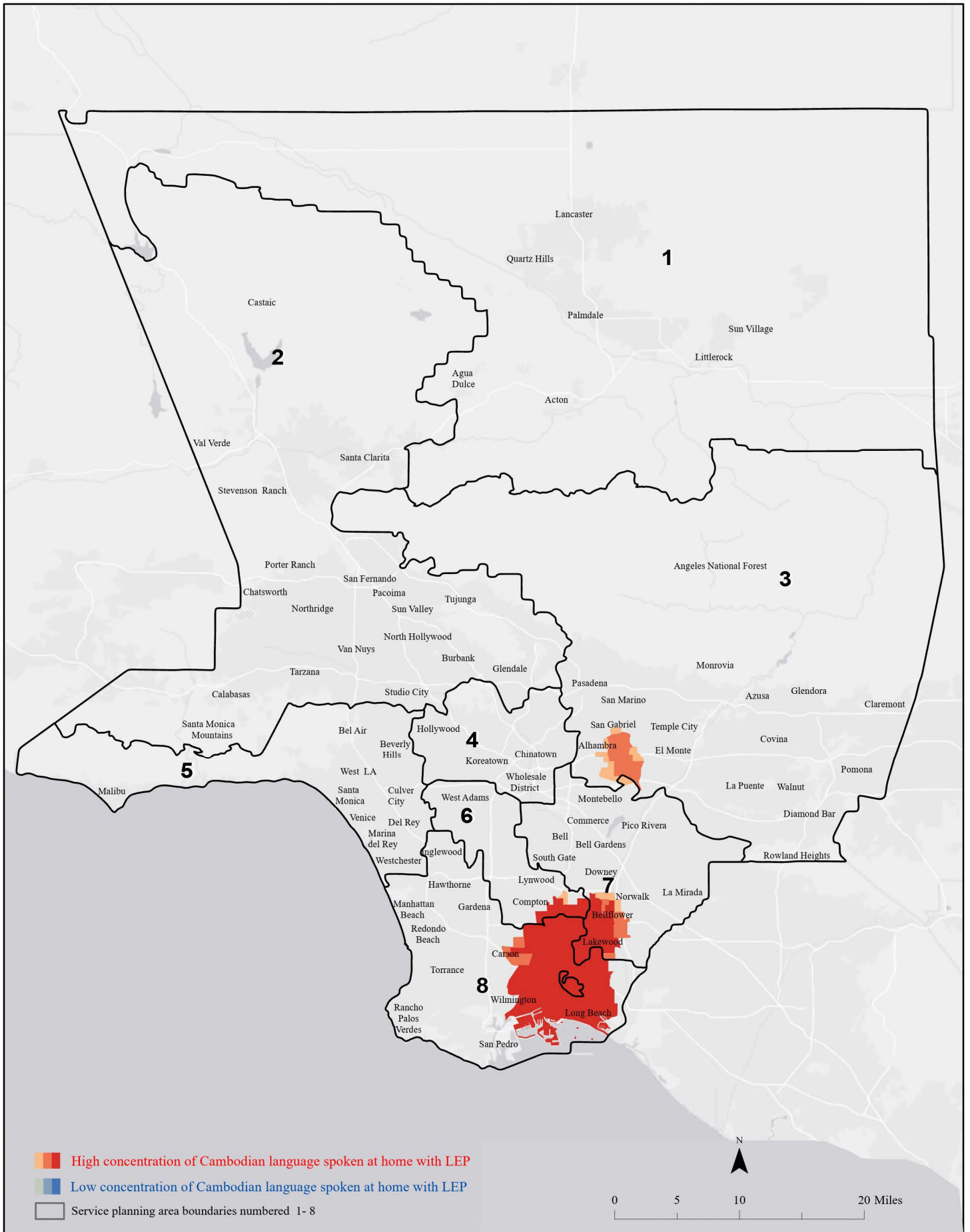
Armenian Language Spoken at Home With Limited English Proficiency (LEP) for the Population of 5 Years and Older (Hot Spot Areas)



Data sources: SPA boundary retrieved from LAC eGIS repository updated 2022. 2015 language spoken at home by limited English Proficiency (those who reported to speak English less than very well) for the population 5 years and over obtained from American Community Survey 5-Year Estimates processed and map produced by GIS section, Health Outcomes and Data Analytics (HODA) at SAPC.

Contact: Any questions for the map contact Tina Kim at tkim@ph.lacounty.gov

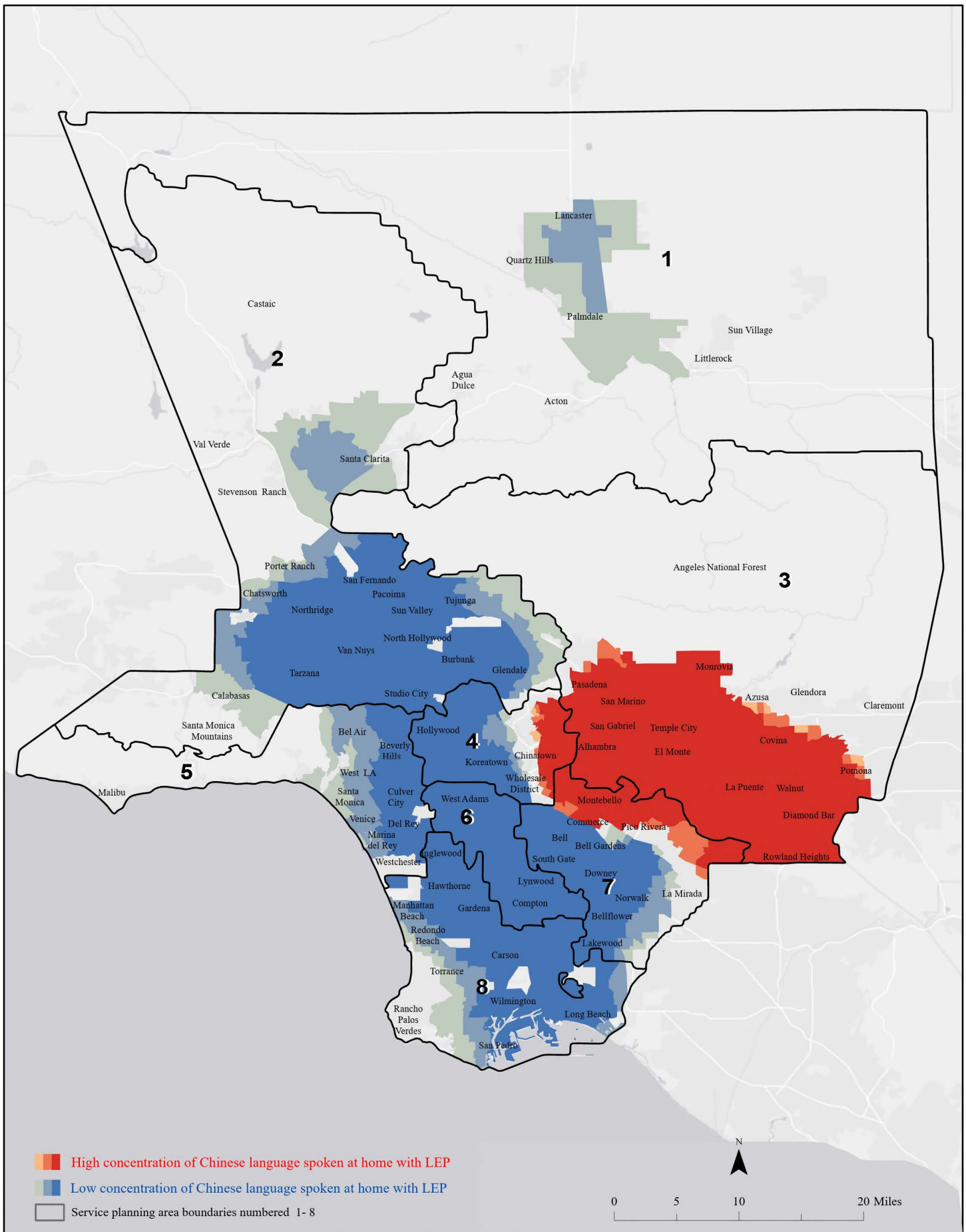
Cambodian Language Spoken at Home With Limited English Proficiency (LEP) for the Population of 5 Years and Older (Hot Spot Areas)



Data sources: SPA boundary retrieved from LAC eGIS repository updated 2022. 2015 language spoken at home by limited English Proficiency (those who reported to speak English less than very well) for the population 5 years and over obtained from American Community Survey 5-Year Estimates processed and map produced by GIS section, Health Outcomes and Data Analytics (HODA) at SAPC.

Contact: Any questions for the map contact Tina Kim at tkim@ph.lacounty.gov

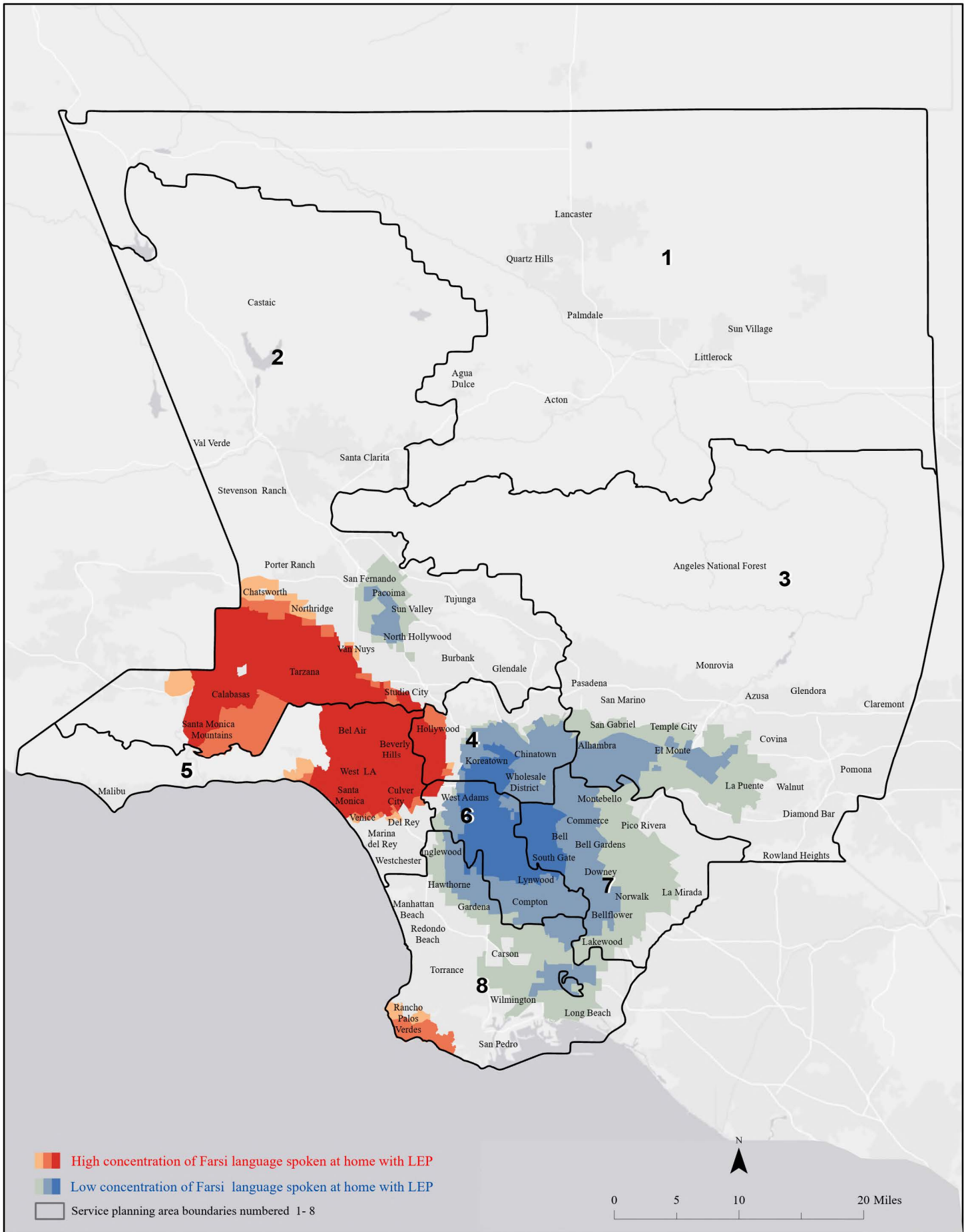
Chinese Language Spoken at Home With Limited English Proficiency (LEP) for the Population of 5 Years and Older (Hot Spot Areas)



Data sources: SPA boundary retrieved from LAC eGIS repository updated 2022. 2021 language spoken at home by limited English Proficiency (those who reported to speak English less than very well) for the population 5 years and over obtained from American Community Survey 5-Year Estimates processed and map produced by GIS section, Health Outcomes and Data Analytics (HODA) at SAPC.

Contact: Any questions for the map contact Tina Kim at tkim@ph.lacounty.gov

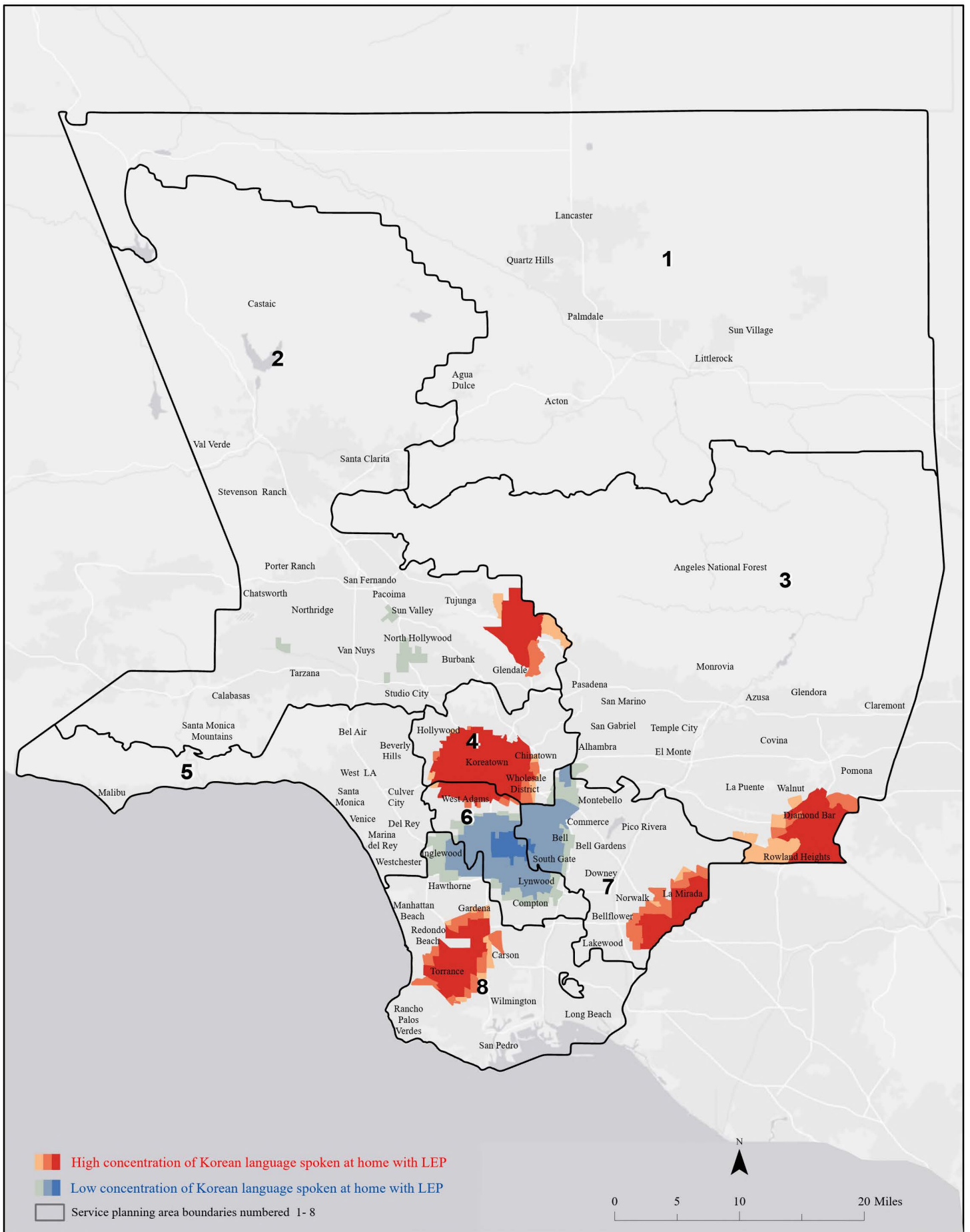
Farsi Language Spoken at Home With Limited English Proficiency (LEP) for the Population of 5 Years and Older (Hot Spot Areas)



Data sources: SPA boundary retrieved from LAC eGIS repository updated 2022. 2015 language spoken at home by limited English Proficiency (those who reported to speak English less than very well) for the population 5 years and over obtained from American Community Survey 5-Year Estimates processed and map produced by GIS section, Health Outcomes and Data Analytics (HODA) at SAPC.

Contact: Any questions for the map contact Tina Kim at tkim@ph.lacounty.gov

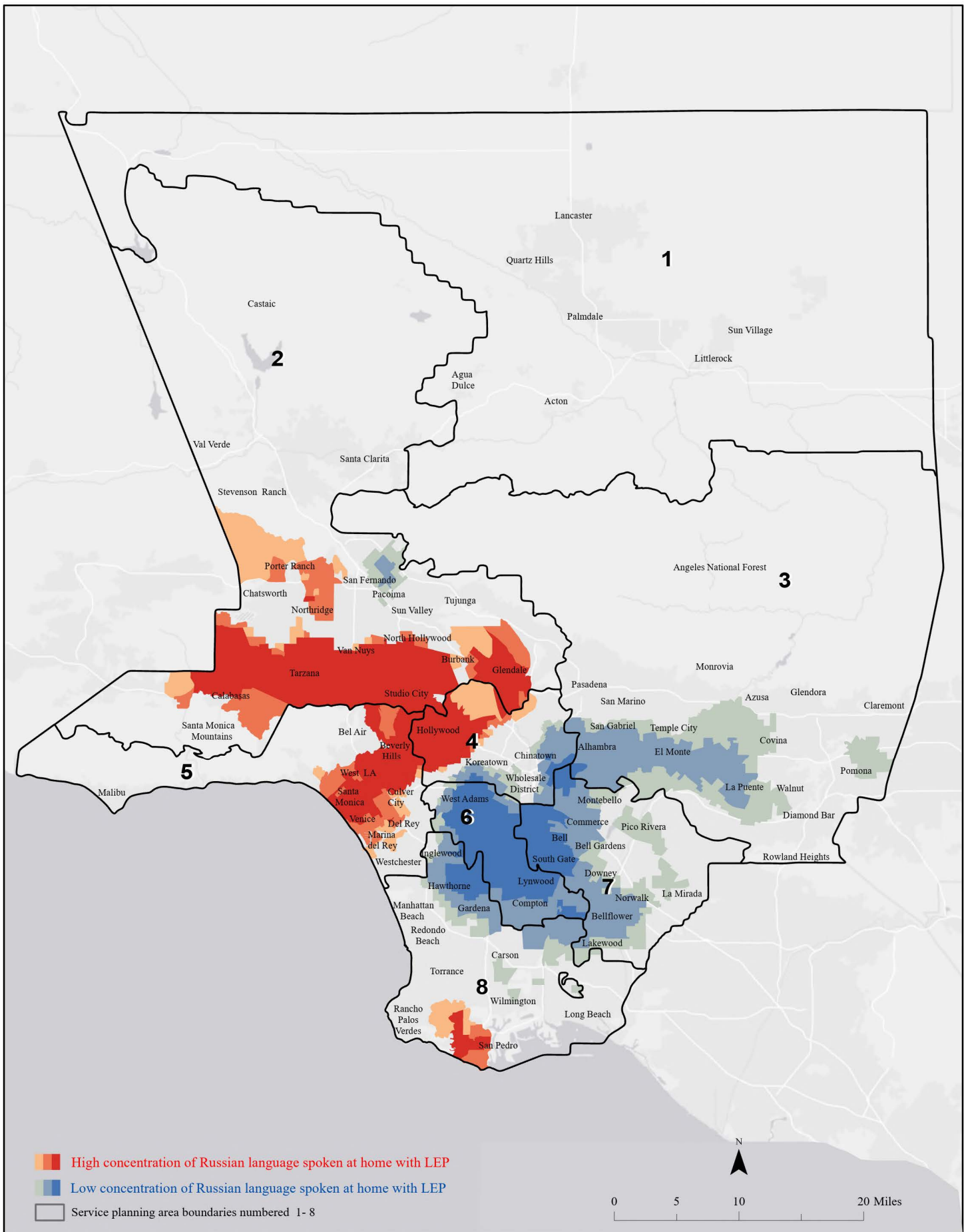
Korean Language Spoken at Home With Limited English Proficiency (LEP) for the Population of 5 Years and Older (Hot Spot Areas)



Data sources: SPA boundary retrieved from LAC eGIS repository updated 2022. 2021 language spoken at home by limited English Proficiency (those who reported to speak English less than very well) for the population 5 years and over obtained from American Community Survey 5-Year Estimates processed and map produced by GIS section, Health Outcomes and Data Analytics (HODA) at SAPC.

Contact: Any questions for the map contact Tina Kim at tkim@ph.lacounty.gov

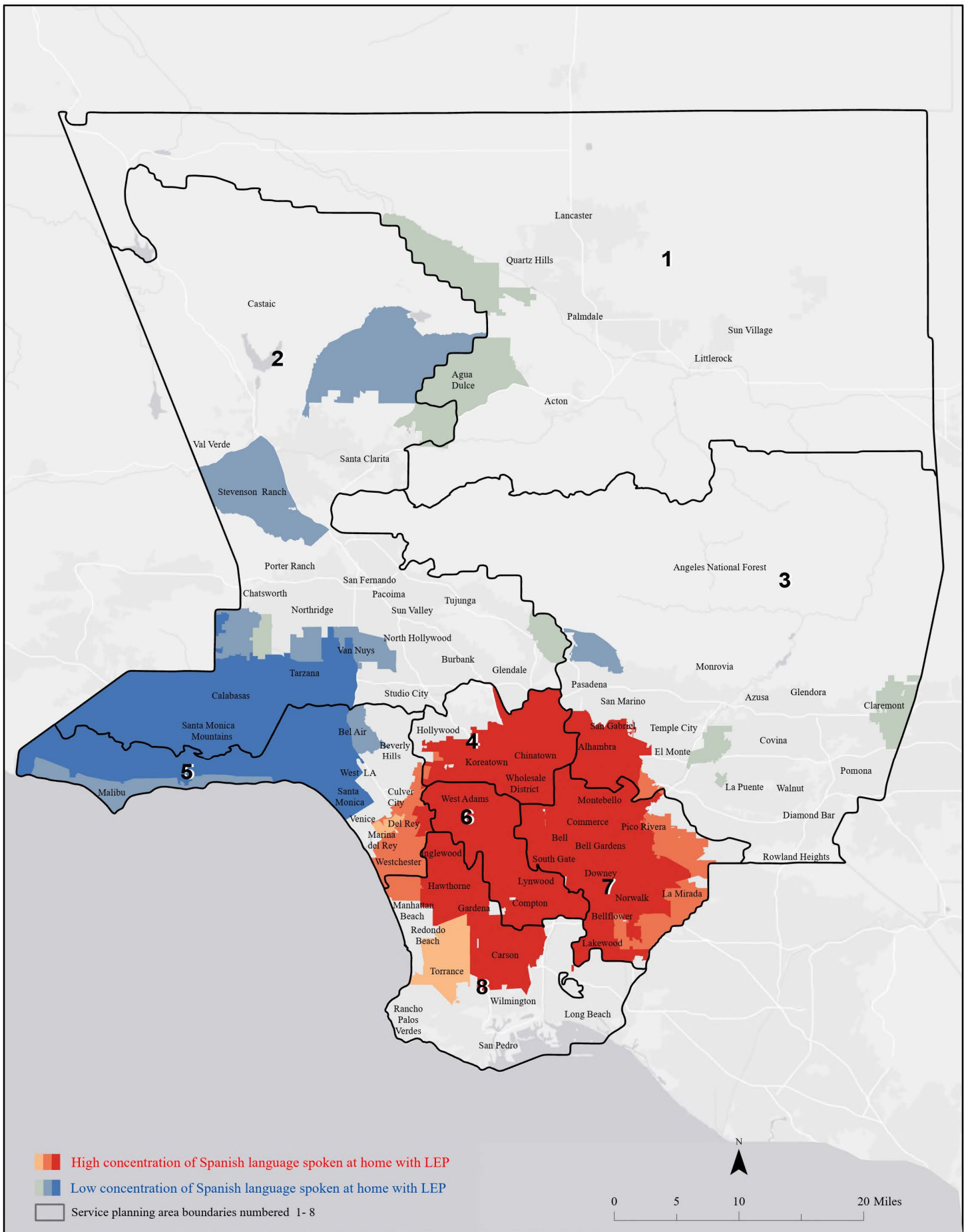
Russian Language Spoken at Home With Limited English Proficiency (LEP) for the Population of 5 Years and Older (Hot Spot Areas)



Data sources: SPA boundary retrieved from LAC eGIS repository updated 2022. 2021 language spoken at home by limited English Proficiency (those who reported to speak English less than very well) for the population 5 years and over obtained from American Community Survey 5-Year Estimates processed and map produced by GIS section, Health Outcomes and Data Analytics (HODA) at SAPC.

Contact: Any questions for the map contact Tina Kim at tkim@ph.lacounty.gov

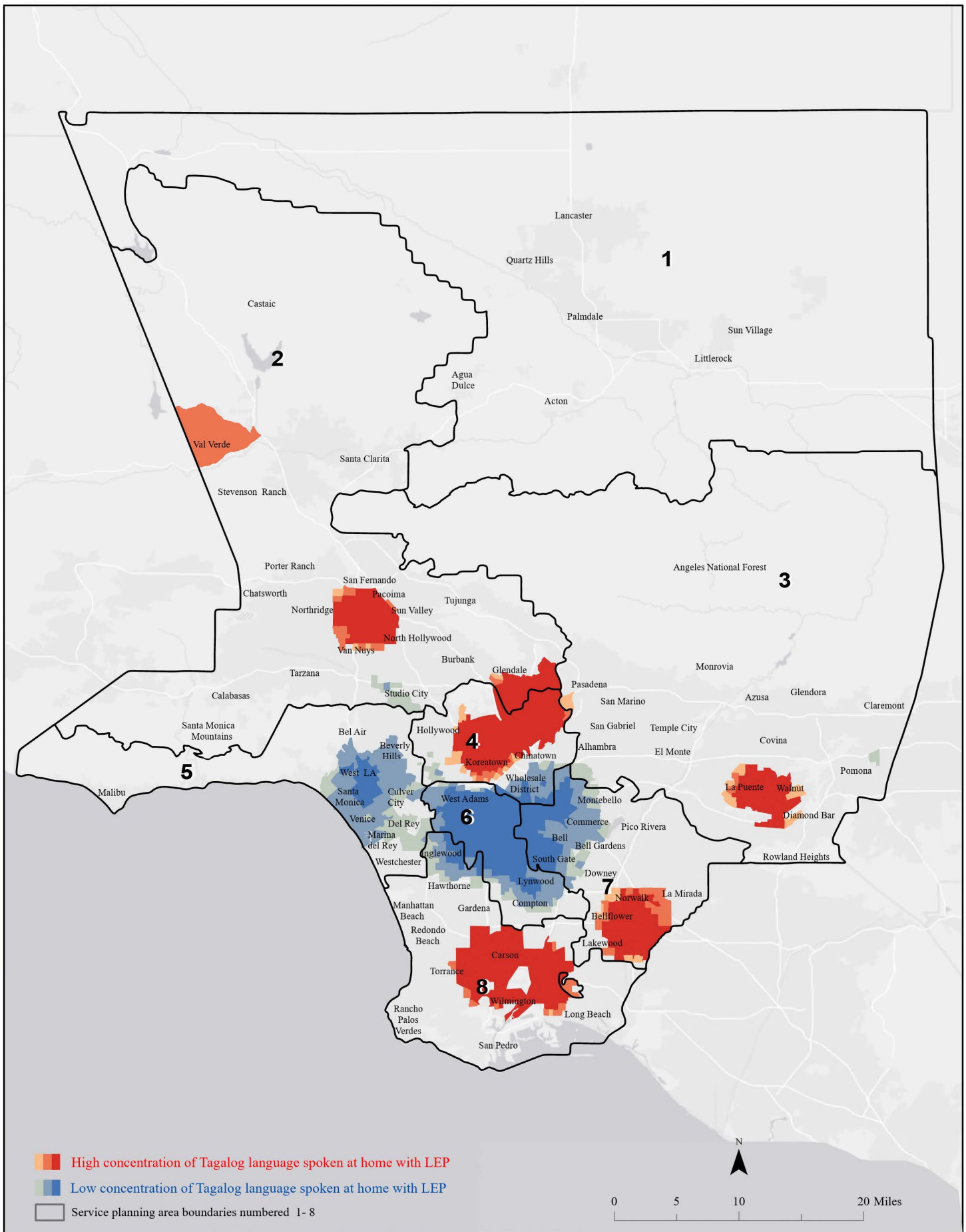
Spanish Language Spoken at Home With Limited English Proficiency (LEP) for the Population of 5 Years and Older (Hot Spot Areas)



Data sources: SPA boundary retrieved from LAC eGIS repository updated 2022. 2021 language spoken at home by limited English Proficiency (those who reported to speak English less than very well) for the population 5 years and over obtained from American Community Survey 5-Year Estimates processed and map produced by GIS section, Health Outcomes and Data Analytics (HODA) at SAPC.

Contact: Any questions for the map contact Tina Kim at tkim@ph.lacounty.gov

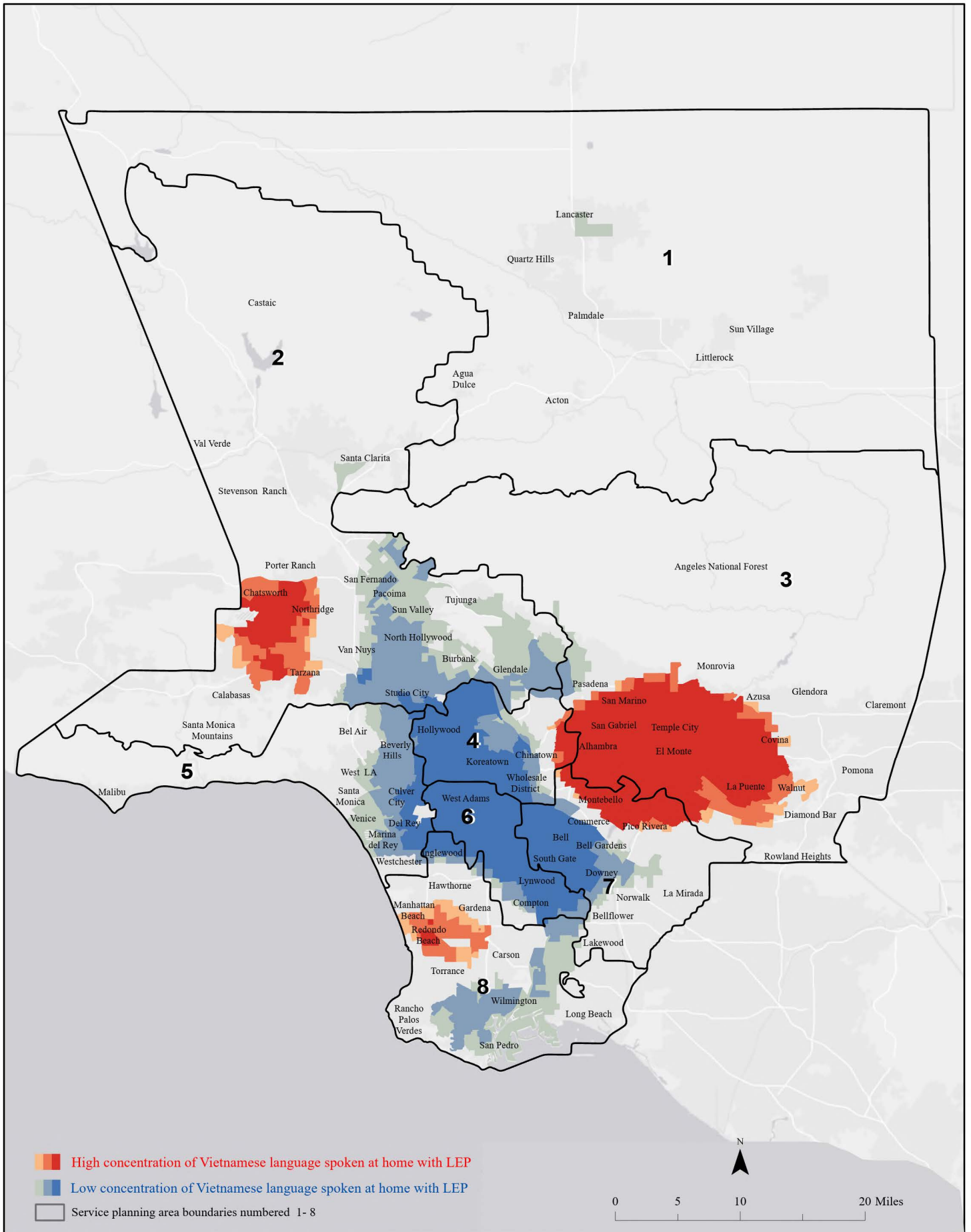
Tagalog Language Spoken at Home With Limited English Proficiency (LEP) for the Population of 5 Years and Older (Hot Spot Areas)



Data sources: SPA boundary retrieved from LAC eGIS repository updated 2022. 2021 language spoken at home by limited English Proficiency (those who reported to speak English less than very well) for the population 5 years and over obtained from American Community Survey 5-Year Estimates processed and map produced by GIS section, Health Outcomes and Data Analytics (HODA) at SAPC.

Contact: Any questions for the map contact Tina Kim at tkim@ph.lacounty.gov

Vietnamese Language Spoken at Home With Limited English Proficiency (LEP) for the Population of 5 Years and Older (Hot Spot Areas)



Data sources: SPA boundary retrieved from LAC eGIS repository updated 2022. 2021 language spoken at home by limited English Proficiency (those who reported to speak English less than very well) for the population 5 years and over obtained from American Community Survey 5-Year Estimates processed and map produced by GIS section, Health Outcomes and Data Analytics (HODA) at SAPC.

Contact: Any questions for the map contact Tina Kim at tkim@ph.lacounty.gov