



Sage Updates

Substance Abuse Prevention and Control
Los Angeles County Health Agency and Department of Public Health





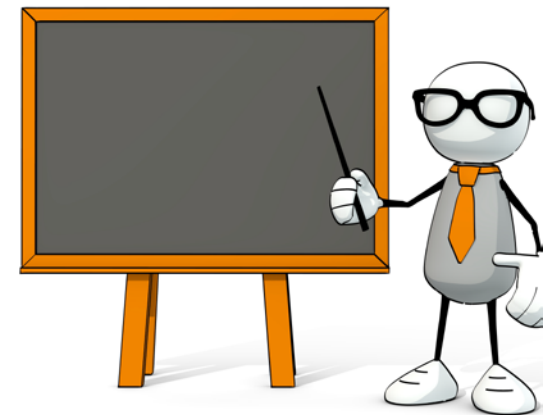
Substance Use Disorder Information System

- **Sage Updates: Reminders and Processes**
 - Compatibility Mode in Internet Explorer
 - Split Authorizations for FY 19/20
- **Sage Updates: New Functionality!**
 - ASAM Comments Section
 - Billing for Group and Patient Education Warning Message
 - Billing Validation for Performing Providers
- **Upcoming Trainings for 2019!**

Sage Updates

Sage Updates: Reminders

- 1. To reset your password online, please go to 365enroll.lacounty.gov and click on “Set or Reset Your Password”**
 - Then follow the instructions on the password reset page.
 - Or contact the helpdesk and select option “1” when prompted to reset your password.
- 2. If you are using Internet Explorer and Compatibility View, there may be errors encountered in Sage.**
 - Please disable compatibility view to avoid billing problems.
- 3. The Sage Alerts, located on the main menu of Provider Connect, are useful for identifying various business needs.** For full details please go to <http://publichealth.lacounty.gov/sapc/Sage/SageProviderMeetings.htm> and download the “Understanding Sage Alerts” presentation. Helpful alerts include:
 - Authorizations expiring within 7 days
 - Eligibility periods expiring within 30 days
 - Patients with no activity in the last 30 days or No Cal-OMS discharge entered
 - Patients not meeting service hour requirements



Sage Updates: Reminders

Split Authorizations for the upcoming Fiscal Year 19/20

- There are no executed contracts for FY 19/20.
- All authorizations that cross over the current FY and the next FY are being split upon approval from UM.
 - Current FY dates will be approved and assigned a contract as is the current process for authorizations.
 - Next FY dates will be placed in *Pending, No Active Contract* Status



- When investigating pending authorizations, please be careful to note the start date of the authorization.
 - Start dates 7/01/19 and beyond will be *Pending* status, *No Active Contract* status reason.
 - Providers do not need to investigate these pending authorizations.



Sage Updates: Enhancements

Sage ASAM Assessment Form

- Providers can now access the ASAM Narrative Report at any time after submitting the ASAM Continuum assessment.



- The Narrative Report collates all the responses on the ASAM Continuum and reports them as a story line of the patient in a narrative and readable format.

ASAM CONTINUUM[®]
NARRATIVE REPORT

Sage Update: Enhancements

Sage ASAM Assessment Form

- Providers will now have the ability to enter comments on the ASAM Form in Sage directly.
 - “Comments on Assessment”
 - This will NOT replace the Miscellaneous Justification note.
 - The comments are *NOT* required to complete before finalizing the ASAM.

Assessment
Created On: 12/18/2018 Completed On: 12/18/2018 Interviewer: [Redacted]

Launch ASAM

Refresh Assessment Information

Assessment Level of Care Information

Biomedical - Lowest Level Of Care - Level 2.5 - Partial Hospitalization Treatment-INACTIVE
Comments - Level 2.5 - Partial Hospitalization Treatment-INACTIVE

EmotionalBehavioral - Lowest Level Of Care - Level 1 - Outpatient Treatment
Comments - Level 1 - Outpatient Treatment, Level 3.1 - Clinically Managed Low-Intensity Residential Treatment, Level 3.3 - Clinically Managed Population-Specific, High-Intensity Residential Treatment, Level 3.5 - Clinically Managed High-Intensity Residential Treatment, Level 3.7 - Medically Monitored Intensive Inpatient Treatment

LivingEnvironment - Lowest Level Of Care - Level 1 - Outpatient Treatment
Comments - Level 1 - Outpatient Treatment

ReadinessToChange - Lowest Level Of Care - Level 0.5 - Early Intervention-INACTIVE
Comments - Level 0.5 - Early Intervention-INACTIVE, Level 3.5 - Clinically Managed High-Intensity Residential Treatment, Level 3.7 - Medically Monitored Intensive Inpatient Treatment

RelapsePotential - Lowest Level Of Care - Level 2.1 - Intensive Outpatient Treatment
Comments - Level 2.1 - Intensive Outpatient Treatment

Withdrawal - Lowest Level Of Care - Level 0.5 - Early Intervention-INACTIVE
Comments - Level 0.5 - Early Intervention-INACTIVE, Level 1 - Outpatient Treatment

Comments on Assessment



Sage Updates: Enhancements

Sage Reports

- **Contracting Provider Program** (I.e. Specific site/location) has been added as an optional search criteria for the following reports and views to better meet providers business needs by narrowing down results to specific sites/locations
 - Authorization Request Status Report
 - Check/EFT Number Report
 - Denied Services Report (From the Submitted Bills display)
 - Denied Services in MSO report
- Summary By Client on the Billing display and Submitted Bill Detail display will now be listed by Client ID in ascending order- Smallest to Largest



Sage Updates: Enhancements

Group Counseling and Patient Education Claims

- Provider Connect will now produce an error message and prevent the user from entering Treatment information for Group Counseling and Patient Education that do not meet the minimum or maximum billing requirements as outlined in the Provider manual and rates and standards matrix.
- All group counseling and patient education claims must be within these parameters:
 - Minimum # of group/education participants is 2 in all levels of care
 - Maximum # of group/education participants is 12 in almost all levels of care
 - Residential Patient Education groups can be up to 30 participants.
- Documentation time for Groups and Patient Education must follow the following parameters:
 - 2-4 participants can claim up to 15 minutes of documentation
 - 5-8 participants can claim up to 30 minutes of documentation
 - 9-12 participants can claim up to 45 minutes of documentation

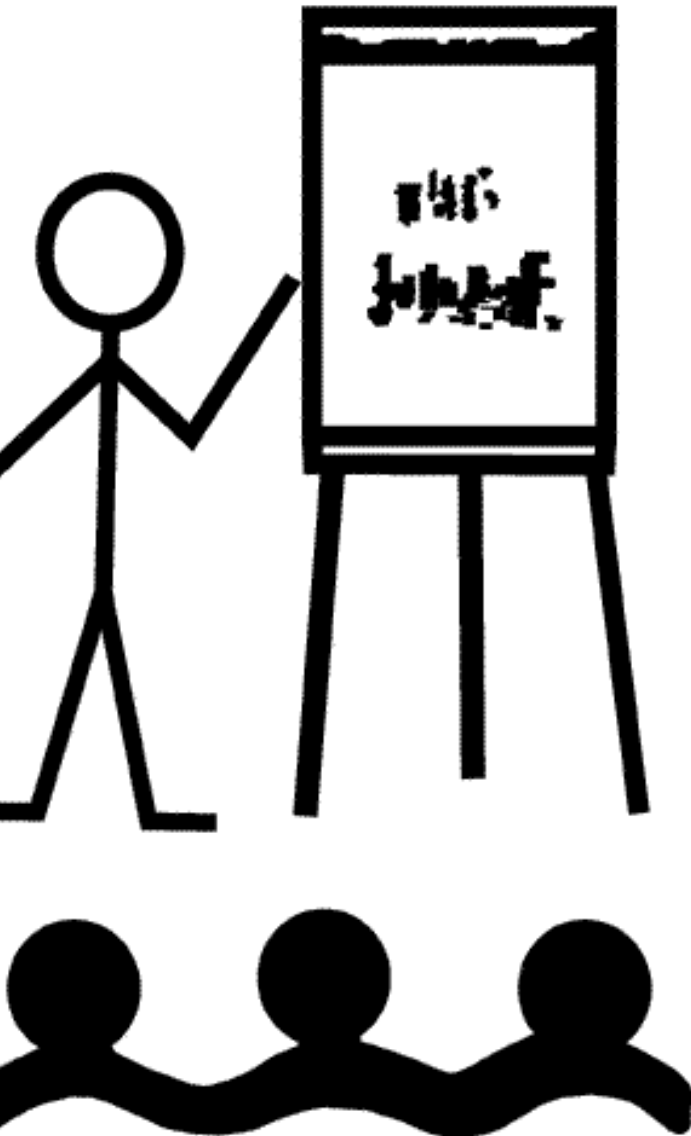


Sage Updates: Enhancements

Billing Validation Rule For Performing Provider at Claims Adjudication

- New billing validation measures have been added to Sage to prevent denials and recoupment.
- All staff who provide services are required to have their NPI numbers validated and entered into Sage.
 - For staff that do not currently have an NPI number or to correct an error on the NPI, please complete the Sage Provider Connect User Creation Form (Found here: <http://publichealth.lacounty.gov/sapc/Sage/SageInfo.htm>)
 - Select “Modification” as the request type to add NPI information and send to sageforms@ph.lacounty.gov

training



Upcoming SAPC Trainings

- Remember to always check the SAPC training calendar for current trainings and registration information.
 - <http://publichealth.lacounty.gov/sapc/Event/event.htm>
- Each calendar link will lead to the training flyer and registration information.
- All SAPC trainings offer continuing education credits for Registered and Certified SUD counselors, LMFT's, LCSW's, Psychologists, RN's.
- All SAPC Lecture Series are CME approved for NP's and MD's

May 2019

SUN	MON	TUE	WED	THU	FRI	SAT
			<p>1</p> <p>Medical Directors Meeting (10:00 AM - 11:30 AM)</p>	2	3	4
	<p>6</p> <p>Motivational Interviewing: Interactive Training for Skill Development (09:00 AM - 04:30 PM)</p>	7	<p>8</p> <p>Co-Occurring Needs among Youth Populations (09:00 AM - 12:15 PM)</p>	<p>9</p> <p>Prevention Services (10:00 AM - 12:00 PM)</p>	<p>10</p> <p>ASAM Continuum: Making the Most of the ASAM CONTINUUM Assessment Tool</p>	11
	<p>13</p> <p>The Dangerous Health Effects of Alcohol (09:00 AM - 12:30 PM)</p>	14	15	<p>16</p> <p>Medication Assisted Treatment for Youth (09:00 AM - 12:15 PM)</p>	17	18
	20	21	22	<p>23</p> <p>Clinical Documentation: Improving Clinical Outcomes One Progress Note at a Time</p>	24	25
	27	<p>28</p> <p>Sage Provider Advisory Meeting (09:00 AM - 12:00 PM)</p>	<p>29</p> <p>Recovery Support Services for Youth Populations (09:00 AM - 12:15 PM)</p>	30	31	



SAPC-UCLA Lecture Series 2019

Date	Topic
Friday, June 28, 2019	Integrating SUD into the Healthcare System
Friday, September 20, 2019	Self-Care for SUD Providers
Friday, December 13, 2019	Kratom, Bath Salts & Spice! Oh my!: Emerging Trends in Substances of Abuse and How to Treat Them (Working title)

