



Norwalk Park Master Plan Report



November 21, 2014



Table of Contents

Introduction	2
Scope.....	2
Purpose.....	2
Goals	2
Design Principles	3
Existing Conditions and Needs Assessment.....	4
Site Assessment.....	4
Group Discussions	5
Norwalk Park Survey Results	5
Community Vision and Summary of Input	8
Community Workshop.....	8
Site Awareness Tour.....	8
Workshop Activities.....	8
Group Plans	9
Diagrammatic Plans	10
Design Recommendations.....	10
Diagrammatic Composite Plan	10
Preliminary Master Plan Elements	11
Preliminary Master Plan.....	11
Conceptual Park Plan	12
Conceptual Cost Estimate	13
Appendix.....	14
Site Analysis Mapping	A-1 to A-11
Workshop Summary and Group Plans	B-1 to B-14
DPH Group Discussions and Survey.....	C-1 to C-3
Cost Estimate	D-1 to D-5

*Made possible with funding from the Centers for Disease Control and Prevention
through the Los Angeles County Department of Public Health.*

INTRODUCTION

Scope

In June, 2014, The Los Angeles County Department of Public Health (DPH) in collaboration with the City of Norwalk, selected RJM Design Group, Inc. to develop a new Park Master Plan for Norwalk Park. The purpose of this project is to provide the City of Norwalk with a Conceptual Park Plan for redeveloping and expanding Norwalk Park in order to better meet the needs of the community, increase opportunities for physical activity, and address the impact of the Interstate 5 Freeway widening project on Norwalk Park and the surrounding neighborhood.

Purpose

The Norwalk Park Master Plan Report documents the current conditions at the park, and summarizes the outreach efforts conducted between April and September, 2014 for the project and the process used to reach a consensus design concept for Norwalk Park. It includes the Conceptual Park Plan and provides cost estimates for the build out of the Conceptual Park Plan. A primary purpose of this report and the Conceptual Park Plan is to recommend actions that will balance the diverse recreation activities of the park while preserving the quality of the experience for all park users.

Goals

- ❖ Identify the site characteristics that may impact Norwalk Park redevelopment.
- ❖ Evaluate community recreation needs related to Norwalk Park through surveys and facilitated discussions with stakeholders such as teens, seniors, the Norwalk Women's Club, etc.
- ❖ Provide a community forum for discussions of potential facilities, issues, and visions for Norwalk Park.
- ❖ Create concepts that align with the DPH's goal of promoting a healthy, active lifestyle with pedestrian access to park amenities.

Design Principles

This report describes the existing site, proposed development, and process used to reach a consensus design concept for Norwalk Park. The project design team identified the following principles to guide their work throughout the process to develop the Conceptual Park Plan with the community:

- ❖ Provide functional, aesthetic design concepts. The amenities and aesthetics suggested by the concept plan should respond to site conditions, City, DPH, and community input, and City standards.
- ❖ Create unique site character appropriate to the environment.
- ❖ Utilize existing site resources, where feasible.

EXISTING CONDITIONS AND NEEDS ASSESSMENT

The Master Plan process began with research and fact finding. The project team, consisting of City staff, a representative from the Department of Public Health (DPH) and RJM, met first to review the approach and methodology. A first step for RJM was to review previous planning documents related to the recreational needs of the community. The City and DPH provided RJM with planning documents and additional data on the community and park area. RJM conducted a site analysis and evaluated the existing site facilities. The focus of the site analysis was the immediate site and those areas physically adjacent to Norwalk Park, including remnant parcels along Interstate 5 Freeway to the east.

In addition to conducting the site analysis, community outreach was conducted by City and Department of Public Health staff. A survey was disseminated both in-person and available online to Norwalk residents and park users. Discussions with park user groups were also conducted. Following the review of the community recreation needs, survey and discussion results, a site awareness tour and workshop were conducted on August 20, 2014 as part of the planning process. The objective of the community workshop was to meet with members of the community, discuss the master plan process, present a summary of pertinent data, solicit input through a project workbook, as well as individual and small group activities, and conduct a hands-on design charrette to share ideas regarding potential improvements to Norwalk Park.

Site Assessment

Norwalk Park is approximately 12 acres, located south of the Interstate 5 Freeway and east of San Antonio Drive. (See Appendix A-2). Existing structures on the site include the Norwalk Arts & Sports Complex, Cultural Arts Center, Aquatic Center, Teen Center and Sproul Reception Center. Residential land uses are located to the south, west, and east of the park (Appendix A-6). Additional amenities include a skate park, basketball courts, tot lot, picnic area, and open turf fields.

The park site can be accessed from the Sports Complex to the west, and several points along Sproul Street to the south.

Remnant parcels to the east consist of a total of approximately 4 acres of leftover parcels that were acquired by CalTrans for the Interstate 5 Freeway widening project. (See Appendices A-2 – A-9).

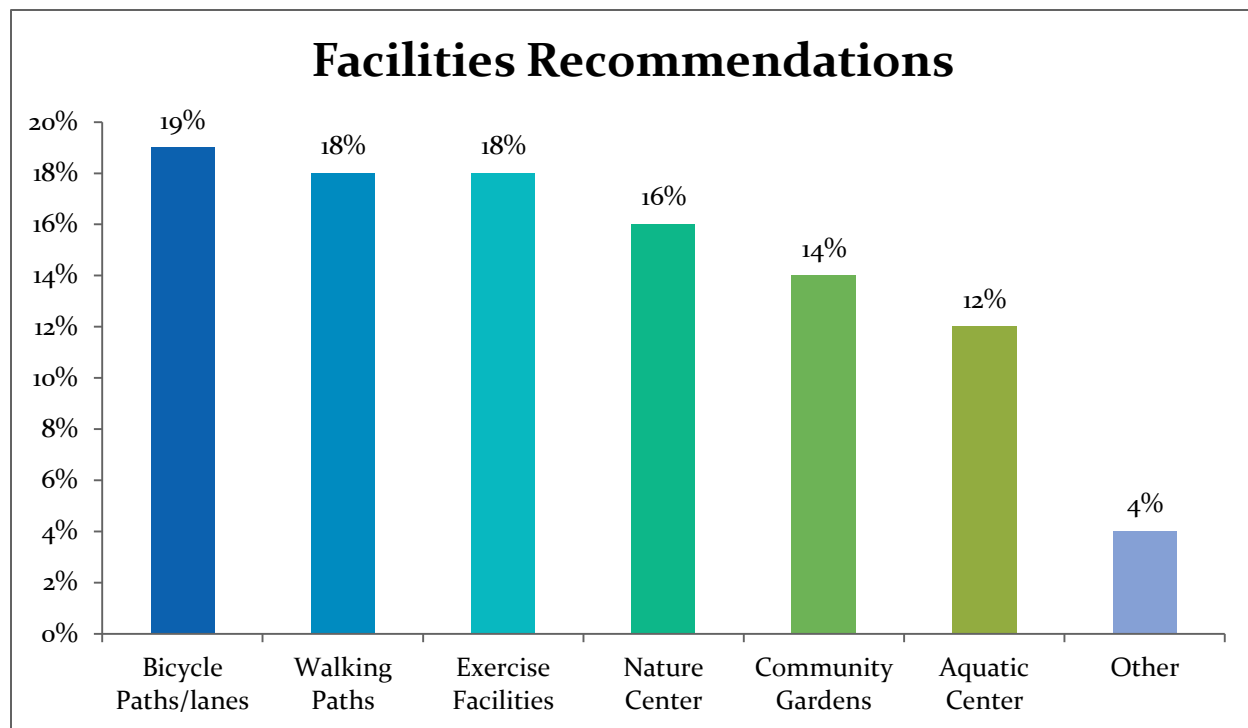
Group Discussions

Group discussions, administered by the DPH, were conducted with a variety of stakeholders regarding the proposed master plan (Appendix C-1). Stakeholder groups included seniors, teens, the Norwalk Women’s Club, Norwalk Community Coordinating Council, Norwalk Park Recreation Leaders, and Boy Scouts of America. Several consistent topics emerged throughout all of the group discussions, including:

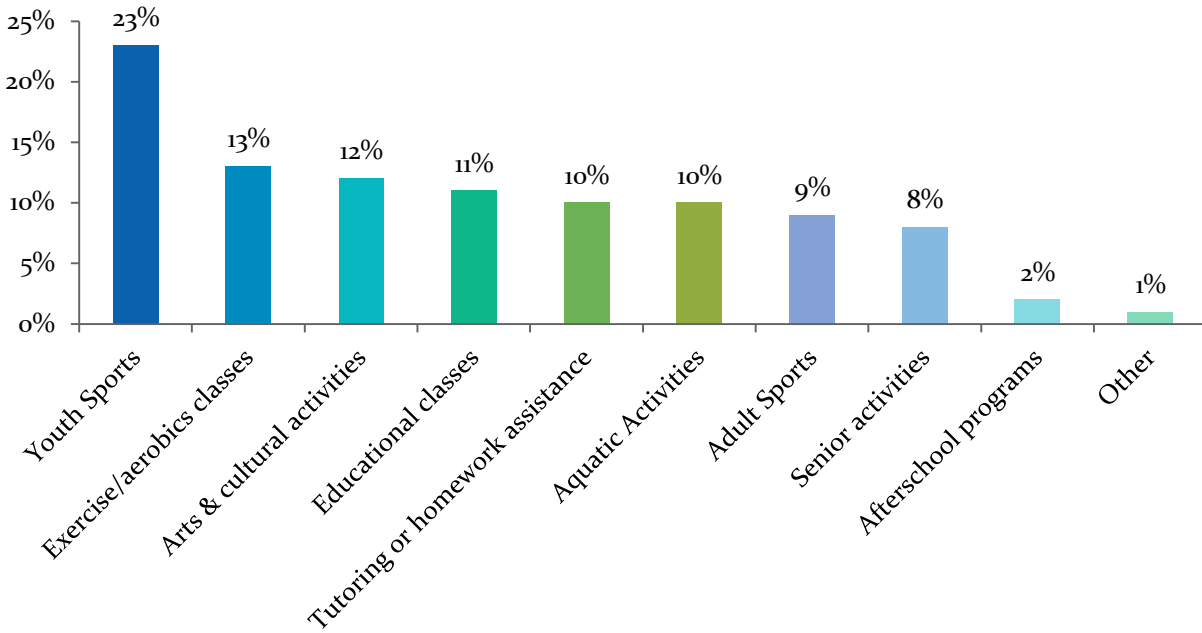
- ❖ Security (alcohol and drug use)
- ❖ Shading
- ❖ Drinking fountains
- ❖ Outdoor gym equipment
- ❖ Walkways/walking paths with distance markers

Results from the Norwalk Park Community Survey

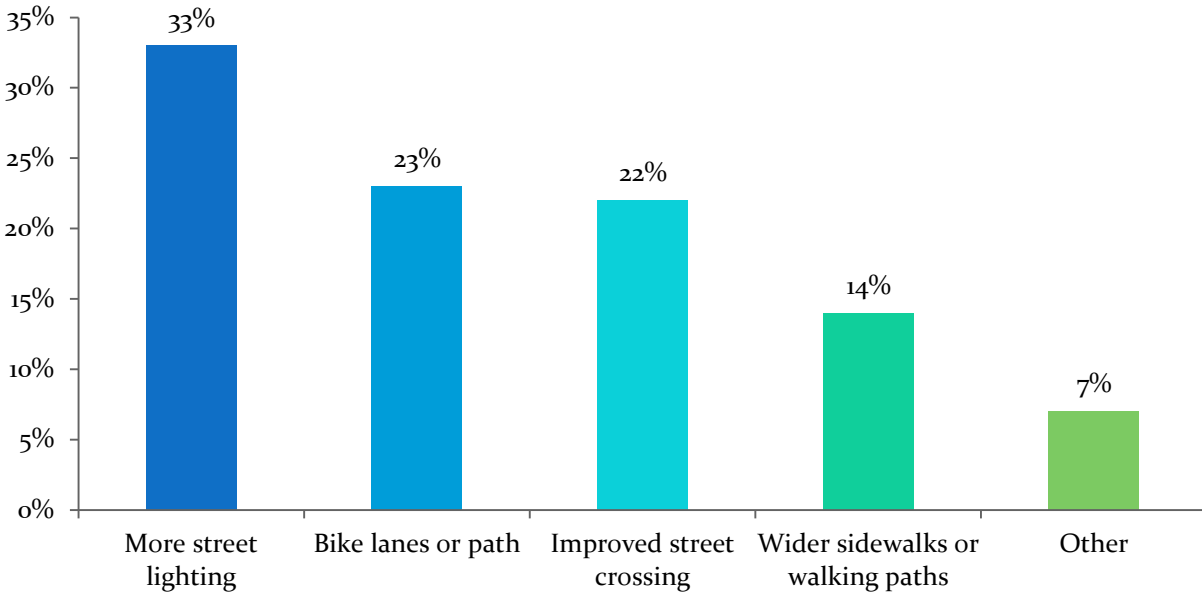
A total of 413 individuals completed a Norwalk Park self-administered questionnaire (Appendices C-2 – C-3). The questionnaires were administered both in English (82%) and in Spanish (18%), and involved a series of closed and open ended questions to better understand the current state of the Park and recommendations for improvements from the community. Respondents were comprised of 32% male and 68% female, with age groups from 5 to 14 and 31 to 50 making up over 50 percent of total participants.



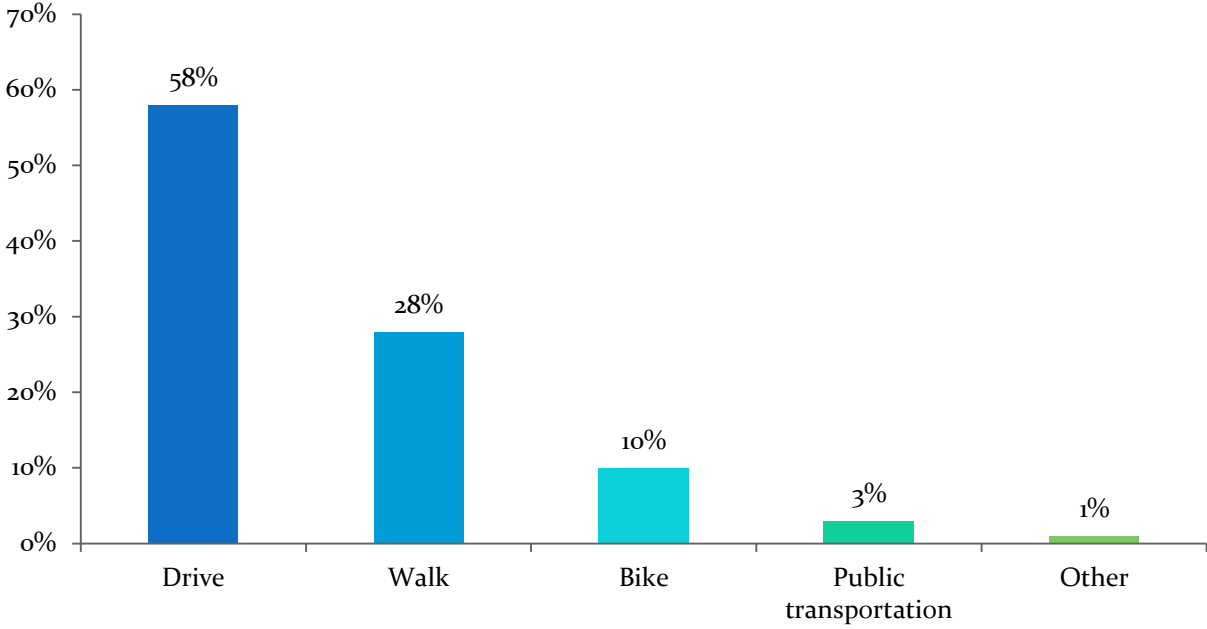
Programs Recommendations



Access Recommendations



Transportation Method



COMMUNITY VISION AND SUMMARY OF INPUT

Community Workshop

As part of the planning process, a workshop was held on Wednesday, August 20th from 6:00 p.m. to 9:00 p.m. at the Norwalk Arts & Sports Complex. Approximately eighty (80) residents and community members attended the workshop. Vickie Yoshikawa, City of Norwalk Management Analyst, and Louisa Franco, Policy Analyst for the County of Los Angeles Public Health Department, welcomed participants and introduced the project team. Bob Muetting of RJM Design Group presented a summary of background data, reviewed the overall planning process for the development of the park master plan, and proceeded to facilitate the workshop activities. See Appendix B-1 for a complete workshop summary.

Site Awareness Tour

The first exercise in the workshop process was a tour of the park (Appendix A-10) and surrounding areas to allow all participants to experience the site and environment in the same way. Each individual filled out a workbook with their responses and impressions of the site and environment. A few of the more consistent comments from the tour workbook included a preference for more exercise facilities and improved lighting, and a concern for safety.

Workshop Activities

After completing a site awareness walk, the workshop participants met to discuss the project. Participants were divided into small groups to discuss potential program elements and develop a list of concerns that might influence planning and development. Both individually and within each group, the participants answered questions related to the site, and collectively were asked to indicate their consensus response related to “likes/dislikes”, “facilities”, “issues”, and “vision”.

After topic presentations were given by each of the participant groups, the top responses of all groups for each of the topics were identified:

Topic 1a: What do you **like the most** about Norwalk Park?

- Open space
- Multiple activities/facilities
- Location

- Topic 1b: What do you **like the least** about Norwalk Park?
- Not enough lighting
 - Safety/security issues
 - Not enough shade
- Topic 2a: What are your most important **issues or concerns** related to Norwalk Park?
- Safety/security
 - Lights/lighting
 - Outdated facilities
 - Restrooms
- Topic 2b: What could be done to **address these issues or concerns** at Norwalk Park?
- Add more lighting
 - Increase safety/security patrols
 - Walking track/trails
 - Restrooms
- Topic 3: What **park facilities and/or amenities** would make Norwalk Park an ideal place to exercise, picnic, and visit?
- Exercise equipment
 - Walking trail/track
 - Picnic areas
 - Playground
 - Shade
- Topic 4: What **recreation activities/facilities** might be located along the vacant parcels adjacent to the freeway east of Norwalk Park?
- Trails
 - Picnic
 - Dog park
 - Small soccer/ball fields
 - Petting zoo

Group Plans

Each group was asked to take the consensus ideas and issues and utilize their creative energy, to develop a concept plan for the park. Eight (8) alternatives were prepared by

the groups during the workshop. (See Appendices B-2 – B-10). A group plan summary matrix of program elements is included in Appendix B-2.

Diagrammatic Plans

Diagrammatic plans were drawn based upon the design concepts developed by each group participating at the workshop. Proposed improvements include the following:

- Walking path with exercise stations
- Picnic shelters
- Nature center/zoo
- New/expanded playground
- Built-in skatepark
- Two soccer fields
- Two grass volleyball courts
- New park entry with more signage throughout the park
- New lighting for security
- Formal and informal gardens
- Expansion of park area to the east (remnant parcels)

(See Appendices B-3 – B-10).

Design Recommendations

Design recommendations with respect to general site planning principles and site specific factors were developed to include a comprehensive plan that incorporates the desired elements derived from community input by incorporating a network of walkways that link access to all park amenities. The park design will also use sustainable design principles such as bioswale and detention areas. Drought tolerant plantings and large shade trees will be implemented throughout the park. Pedestrian and bicycle access would be improved by creating safer entry points along Sproul Street, along with improved signage. Another access would also be created connecting the southeast corner of the park to the linear parcels along the freeway.

Diagrammatic Composite Plan

A diagrammatic composite plan was prepared along with a number of alternatives. The master plan concepts were refined with continual evaluation of what uses could be accommodated at the park site and what relationship of uses best address community input. A preliminary Master Plan was prepared for City and County review and comment.

A Concept Master Plan, with refinements incorporating input from the City and County was developed. (See Appendix B-11).

Preliminary Master Plan Elements

A preliminary diagrammatic site plan was developed based upon the group diagrammatic plan concepts. Major elements are located in order to maximize site potential and relationships for each facility user group. (See Appendix B-12).

Preliminary Master Plan

After analysis of all group plans, composite and consensus diagrams emerged. They became the basis for the initial master plan concept. This concept was submitted to the City and County for review and comment. The most significant comment from the County Department of Public Health was a goal to locate active recreation elements as far away as possible from the freeway. A minimum limit of approximately 250 feet was arrived at for active park uses. This goal became a primary driver for relocation of specific elements.

Based on review comments, the master plan was refined further. Active recreation areas such as volleyball, tot lot, and soccer play fields were moved away from the freeway as far as possible. The City also requested that the revised plan incorporate a small animal/nature center and to create an informal presentation gazebo for approximately 200 – 300 people. Important design considerations included the following lighting issues:

- Equipment selection should be compatible with City aesthetics and comply with City requirements.
- Equipment should shield adjacent property from parking lot and walkway lighting.
- Foot candle levels may vary according to function and shall comply with minimum recommendations to reduce hot spots and dark areas.

The City also requested the following specific features for the park:

- Installation of bollards to control vehicular access and allow pedestrian access to all areas of the park.
- Optimize open spaces.
- Ensure that tree canopies not create shelter areas for loitering or vagrancy.

CONCEPTUAL PARK PLAN



CONCEPTUAL COST ESTIMATE

A Statement of Preliminary Probable Construction Budget is included in Appendix D, summarized as follows:

Main Park:	
A. Maze Area	\$411,341
B. Nature Center Area	\$631,414
C. Open Play Area	\$1,198,924
D. Picnic Area	\$571,665
E. Volleyball Area	\$466,406
F. Soccer Area	\$661,522
G. Tot Lot Area	\$802,414
H. Skatepark Area	\$567,721
I. Gardens Area	\$984,577
J. Park Extension	\$2,584,080
Total	\$8,880,064



APPENDIX




- A-1 – A-11: Site Analysis Mapping
- B-1 – B-14: Workshop Summary and Group Plans
- C-1 – C-3: DPH Group Discussions and Survey
- D-1 – D-5: Cost Estimate

NORWALK PARK MASTER PLAN
 CITY OF NORWALK
 COUNTY OF LOS ANGELES



Google Maps, July, 2014

Site Vicinity

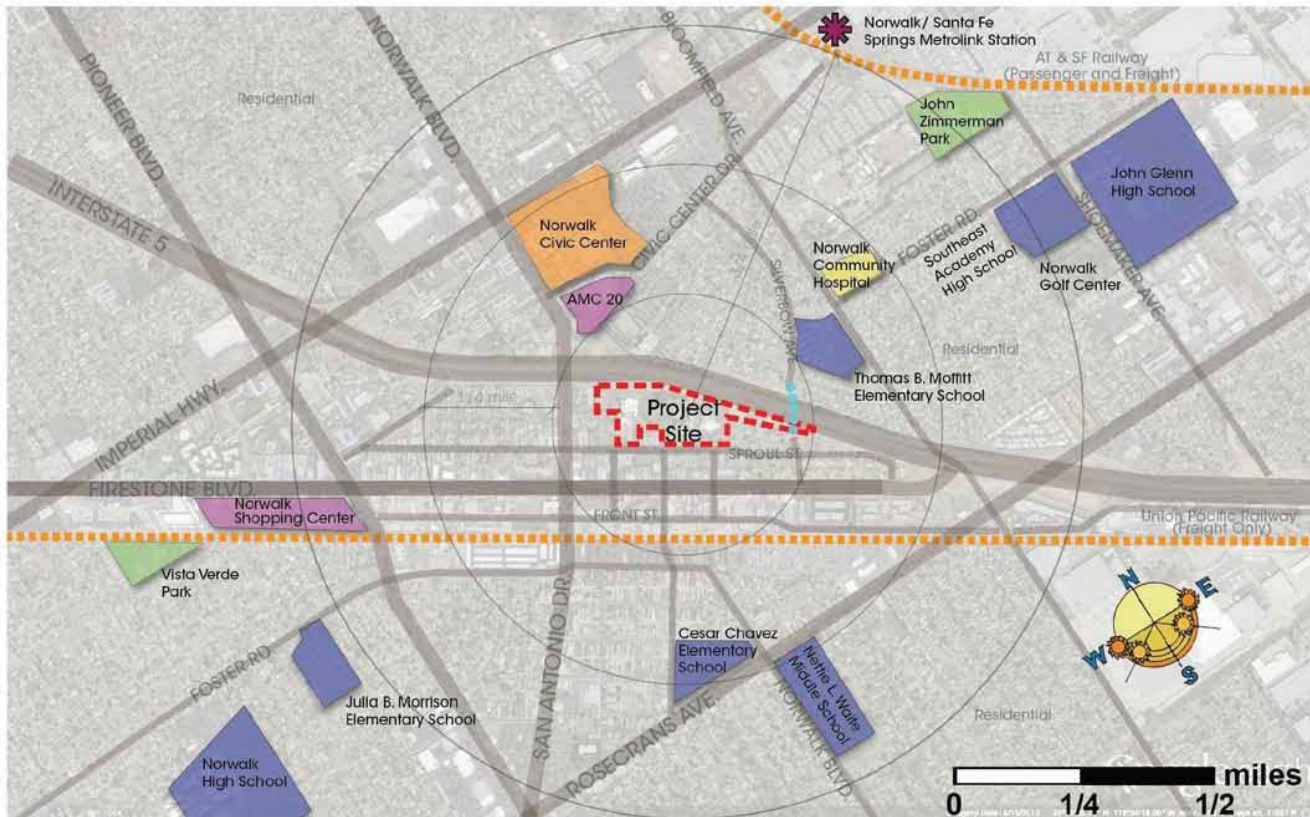
LEGEND	
Project Site	
City of Norwalk	
Streets	

08/20/2014



THIS DOCUMENT IS THE PROPERTY OF RJM DESIGN GROUP, INC., AND NO PART THEREOF SHALL BE USED, REPRODUCED, COPIED, OR MODIFIED WITHOUT THE WRITTEN CONSENT OF RJM DESIGN GROUP, INC. © 2015 RJM Design Group, Inc. All rights reserved.

NORWALK PARK MASTER PLAN
 CITY OF NORWALK
 COUNTY OF LOS ANGELES



Google Maps, July, 2014
 City of Norwalk Land Use Map, September, 2013

Site Location

LEGEND	
Project Boundary	Red dashed line
Streets	Grey line
Railway	Orange dashed line
Pedestrian Bridge	Blue dashed line
Metrolink Station	Red starburst icon
Parks	Green area
Civic	Orange area
Shopping	Pink area
Medical	Yellow area
Schools	Blue area

THIS DOCUMENT IS THE PROPERTY OF RJM DESIGN GROUP, INC. AND NO PART THEREOF SHALL BE USED, REPRODUCED, COPIED, OR TRANSMITTED IN ANY FORM OR BY ANY MEANS, WITHOUT THE WRITTEN CONSENT OF RJM DESIGN GROUP, INC. © 2013 RJM DESIGN GROUP, INC. All rights reserved.

08/20/2014

10250 Central Expressway
 San Jose, California, CA 95127
 www.rjm.com
 (415) 452-2800
 (415) 452-2800



SITE LOCATION PLAN
 NORWALK PARK MASTER PLAN
 CITY OF NORWALK, COUNTY OF LOS ANGELES, CALIFORNIA

NORWALK PARK MASTER PLAN
CITY OF NORWALK
COUNTY OF LOS ANGELES



City of Norwalk Land Use Map, September, 2013

Land Use Plan

LEGEND			
Project Boundary	Low Density Residential	Neighborhood Commercial	Light Industrial
Streets	Medium Density Residential	Professional Offices	Heavy Industrial
Railway	High Density Residential	General Commercial	Open Space/Schools / Public Facilities
		Institutional	

08/20/2014

LAND USE PLAN

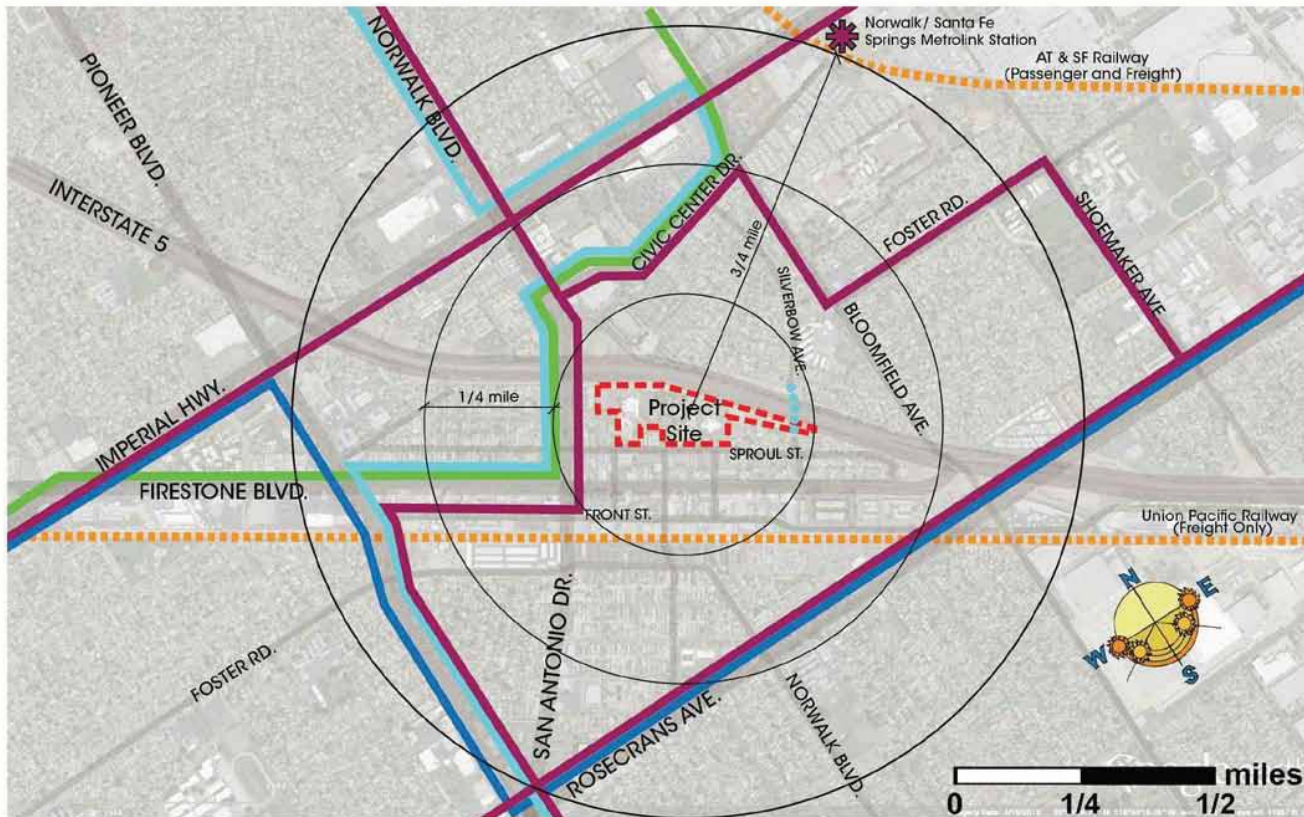
10250 Central Expressway
San Jose, California, CA 95129
www.rjm.com
(408) 452-2800
(408) 452-2800



NORWALK PARK MASTER PLAN
CITY OF NORWALK, COUNTY OF LOS ANGELES, CALIFORNIA

THIS DOCUMENT IS THE PROPERTY OF RJM DESIGN GROUP, INC. AND NO PART THEREOF SHALL BE USED, REPRODUCED, COPIED, OR MODIFIED WITHOUT THE WRITTEN CONSENT OF RJM DESIGN GROUP, INC. © 2013 RJM DESIGN GROUP, INC. All rights reserved.

NORWALK PARK MASTER PLAN
 CITY OF NORWALK
 COUNTY OF LOS ANGELES



Metro System Map, June, 2014

Transportation Plan

LEGEND	
Project Boundary	Metro Local or Limited Bus Route
Streets	Metro Express Bus Route
Railway	Norwalk Transit Bus Route
Norwalk Transit Bus Route	Pedestrian Bridge
Pedestrian Bridge	Metrolink Station
Bike Lanes Class I	Trails
Bike Lanes Class II	

08/20/2014

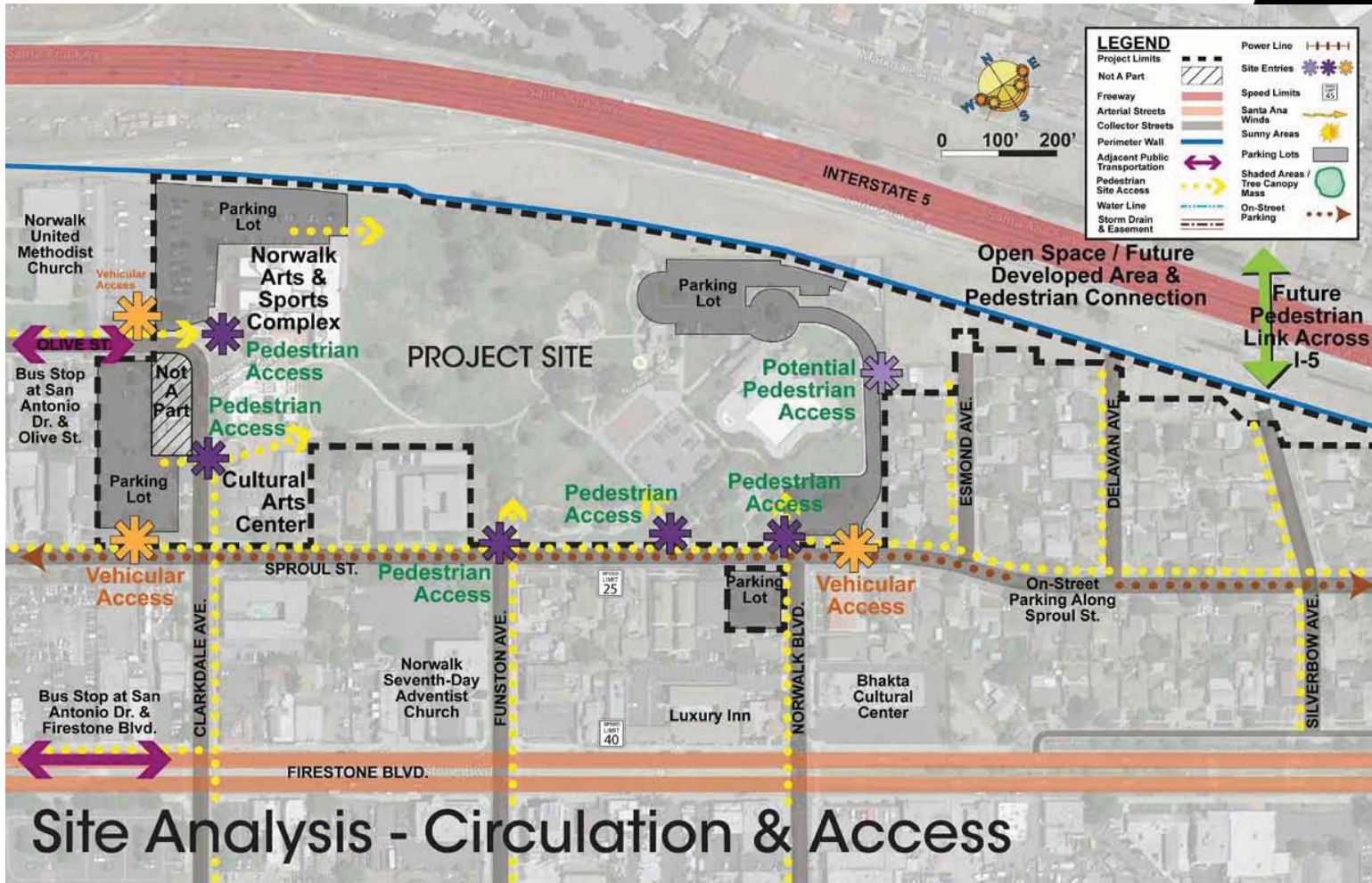
11251 Camino Capistrano, San Juan Capistrano, CA 92675
 www.rjm.com
 (949) 483-2800
 (949) 483-2800



TRANSPORTATION PLAN
 NORWALK PARK MASTER PLAN
 CITY OF NORWALK, COUNTY OF LOS ANGELES, CALIFORNIA

THIS DOCUMENT IS THE PROPERTY OF RJM DESIGN GROUP, INC., AND NO PART THEREOF SHALL BE USED, REUSED, OR NOTIFIED WITHOUT THE WRITTEN CONSENT OF RJM DESIGN GROUP, INC. © 2015 RJM DESIGN GROUP, INC. All rights reserved.

NORWALK PARK MASTER PLAN
CITY OF NORWALK
COUNTY OF LOS ANGELES



THIS DOCUMENT IS THE PROPERTY OF RJM DESIGN GROUP, INC., AND NO PART THEREOF SHALL BE USED, REPRODUCED, OR MODIFIED WITHOUT THE WRITTEN CONSENT OF RJM DESIGN GROUP, INC. © 2013 RJM DESIGN GROUP, INC. All rights reserved.

Site Analysis - Circulation & Access

08/20/2014

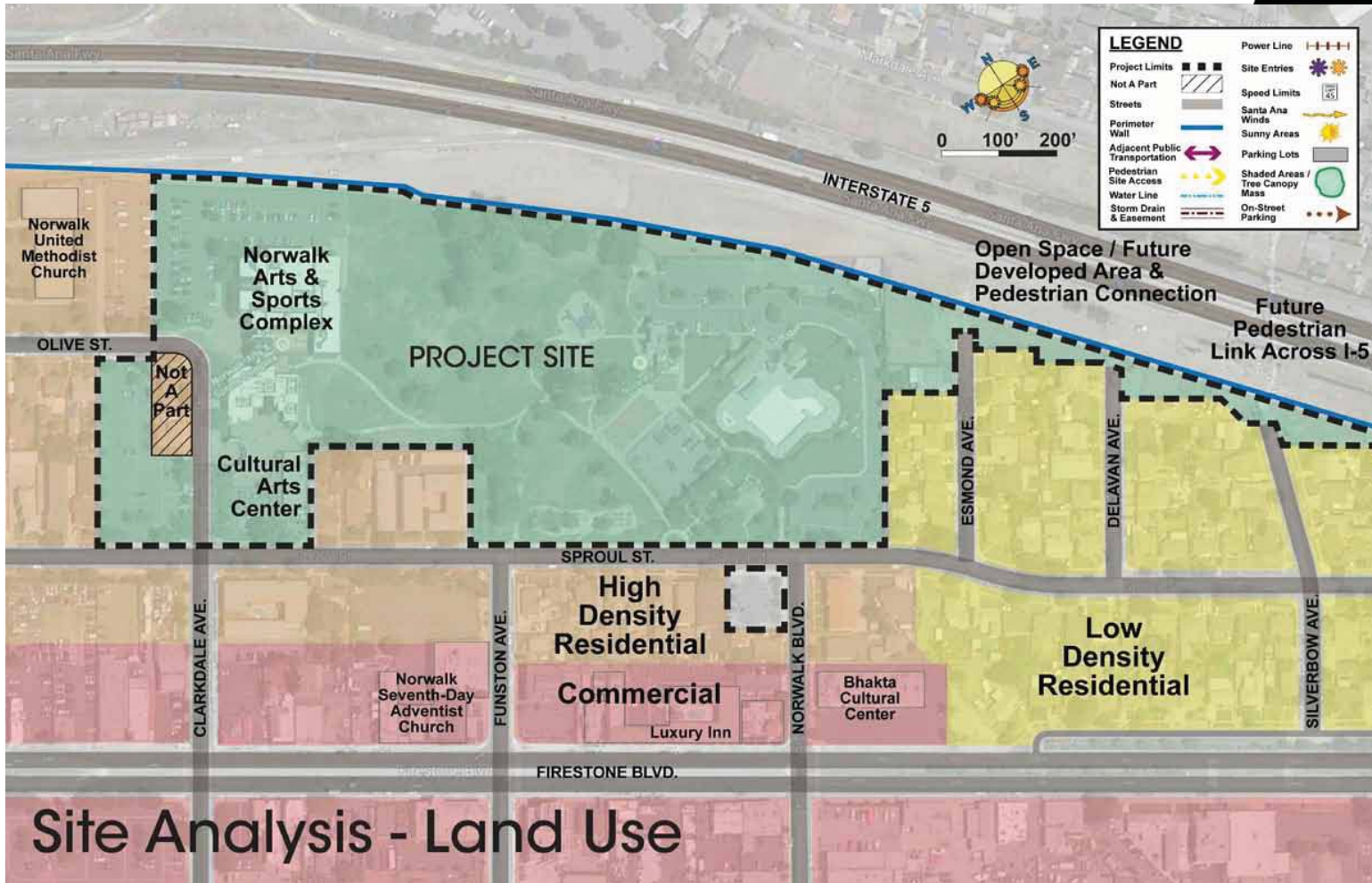
SITE ANALYSIS - CIRCULATION & ACCESS

NORWALK PARK MASTER PLAN

CITY OF NORWALK, COUNTY OF LOS ANGELES, CALIFORNIA



NORWALK PARK MASTER PLAN
CITY OF NORWALK
COUNTY OF LOS ANGELES



THIS DOCUMENT IS THE PROPERTY OF RJM DESIGN GROUP, INC., AND NO PART THEREOF SHALL BE USED, REPRODUCED, OR MODIFIED WITHOUT THE WRITTEN CONSENT OF RJM DESIGN GROUP, INC. © 2013 RJM DESIGN GROUP, INC. All rights reserved.

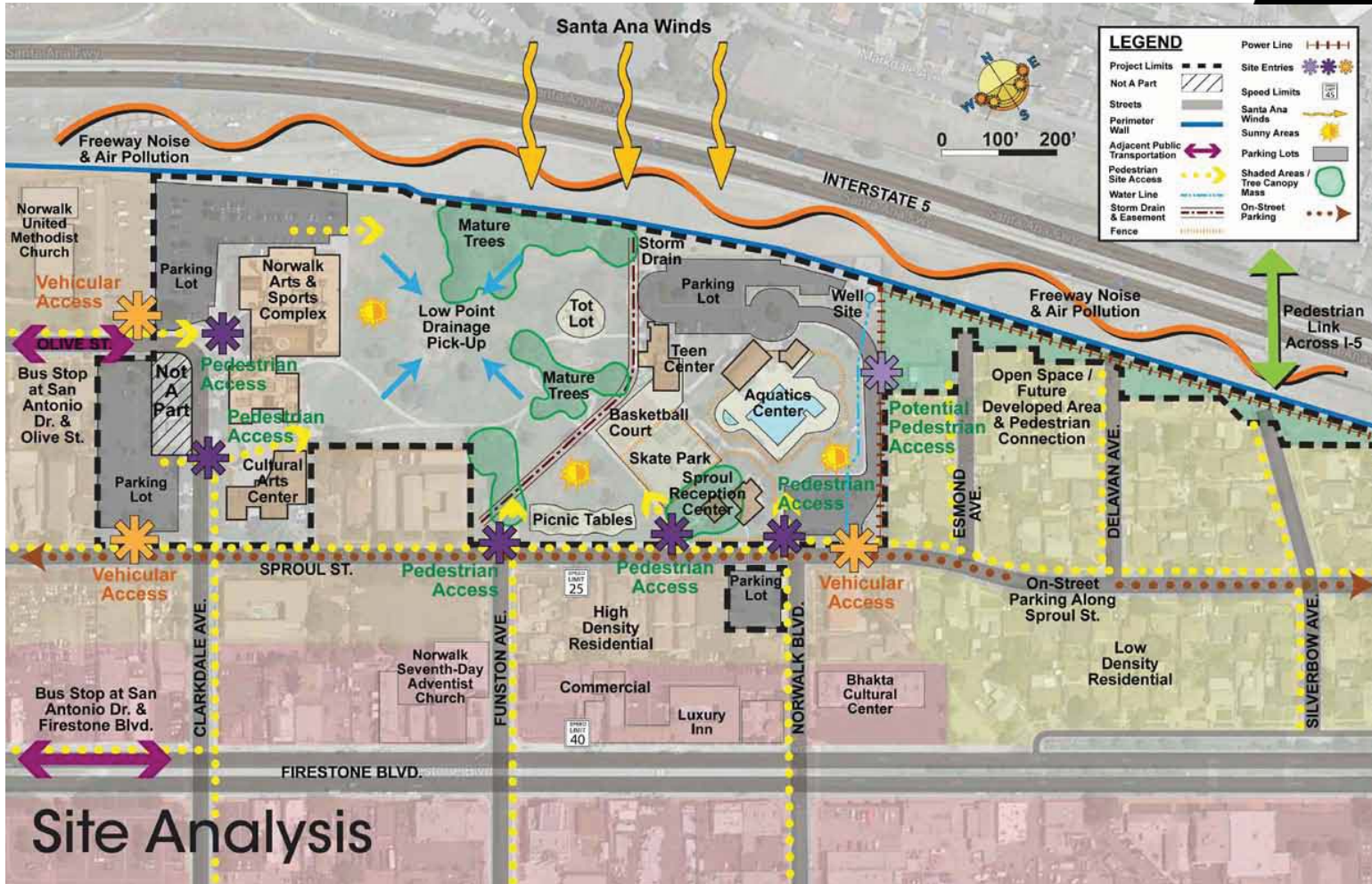
08/20/2014

SITE ANALYSIS - LAND USE



NORWALK PARK MASTER PLAN
CITY OF NORWALK, COUNTY OF LOS ANGELES, CALIFORNIA

NORWALK PARK MASTER PLAN
CITY OF NORWALK
COUNTY OF LOS ANGELES



THIS DOCUMENT IS THE PROPERTY OF RJM DESIGN GROUP, INC. AND NO PART THEREOF SHALL BE USED, REPRODUCED, OR MODIFIED WITHOUT THE WRITTEN CONSENT OF RJM DESIGN GROUP, INC. © 2015 RJM DESIGN GROUP, INC. All rights reserved.

08/20/2014

SITE ANALYSIS

11201 Central Expressway
San Jose, California, CA 95131
www.rjmdesigngroup.com
(408) 402-2882
(408) 402-2883



NORWALK PARK MASTER PLAN
CITY OF NORWALK, COUNTY OF LOS ANGELES, CALIFORNIA

NORWALK PARK MASTER PLAN
CITY OF NORWALK
COUNTY OF LOS ANGELES



Site Opportunities

08/20/2014

SITE ANALYSIS - SITE OPPORTUNITIES

NORWALK PARK MASTER PLAN

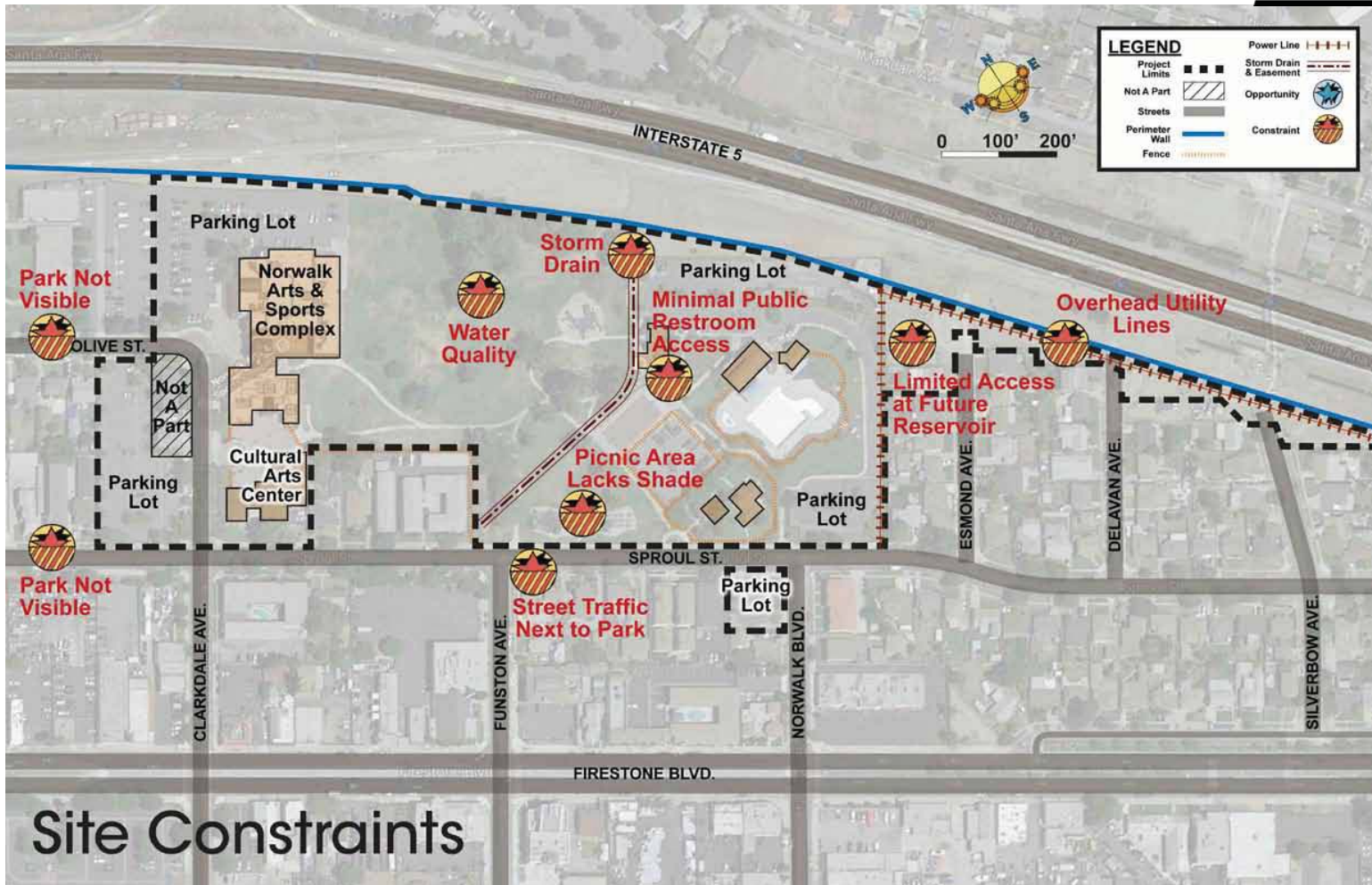
CITY OF NORWALK, COUNTY OF LOS ANGELES, CALIFORNIA

2014 City of Norwalk
San Juan Capistrano, CA 92675
www.norwalkca.gov
949.443.2000
949.443.2000



THIS DOCUMENT IS THE PROPERTY OF RJM DESIGN GROUP, INC. AND NO PART THEREOF SHALL BE USED, REPRODUCED, OR MODIFIED WITHOUT THE WRITTEN CONSENT OF RJM DESIGN GROUP, INC. © 2013 RJM DESIGN GROUP, INC. All rights reserved.

NORWALK PARK MASTER PLAN
 CITY OF NORWALK
 COUNTY OF LOS ANGELES



Site Constraints

08/20/2014

SITE ANALYSIS - SITE CONSTRAINTS

NORWALK PARK MASTER PLAN

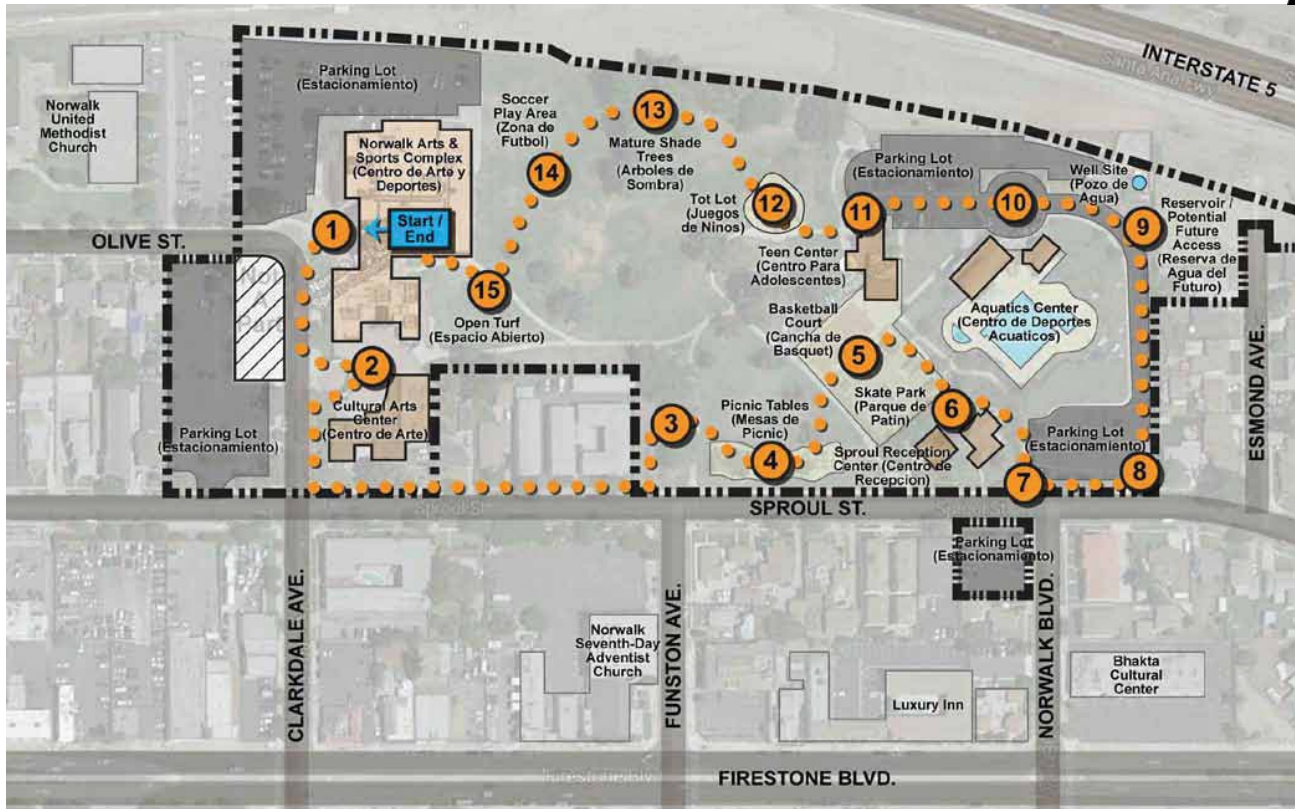
CITY OF NORWALK, COUNTY OF LOS ANGELES, CALIFORNIA

2191 Century Boulevard
 San Jose, California, CA 95128
 www.rjm.com
 (415) 493-2882
 (415) 493-2888



THIS DOCUMENT IS THE PROPERTY OF RJM DESIGN GROUP, INC. AND NO PART THEREOF SHALL BE USED, REPRODUCED, OR MODIFIED WITHOUT THE WRITTEN CONSENT OF RJM DESIGN GROUP, INC. © 2013 RJM DESIGN GROUP, INC. All rights reserved.

NORWALK PARK MASTER PLAN
CITY OF NORWALK
COUNTY OF LOS ANGELES



LEGEND

Project Limits	Walking Tour Meeting Location	
Not A Part	Walking Tour Path	
Streets	Walking Tour Stations	
On-Site Buildings		
Parking Lots		



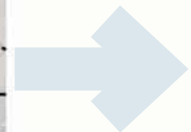
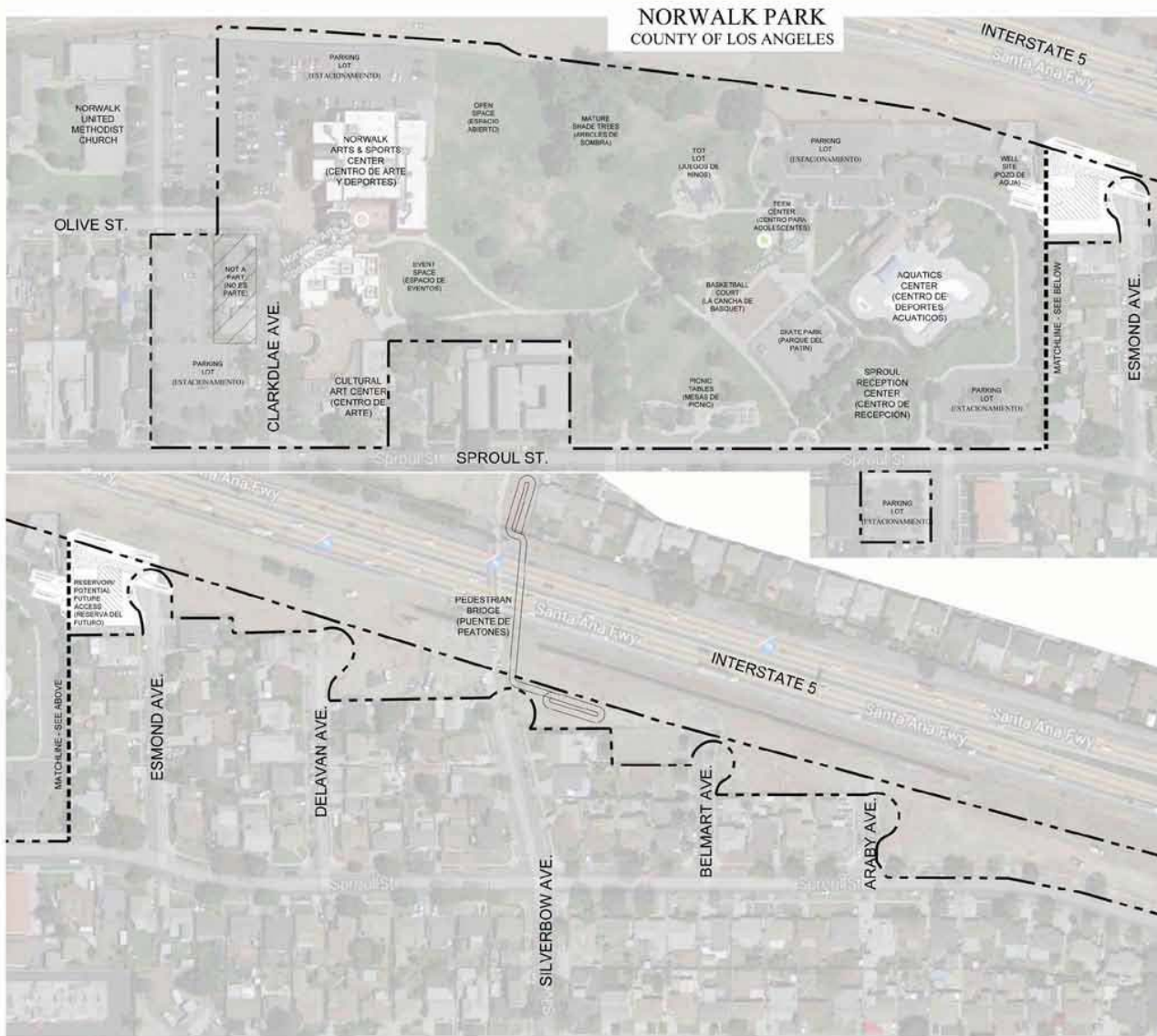
08/20/2014

2014 City of Norwalk
San Juan Capistrano, CA 92675
www.norwalkca.gov
949.433.2000
949.433.2000



SITE ANALYSIS - SITE WALKING TOUR
NORWALK PARK MASTER PLAN
CITY OF NORWALK, COUNTY OF LOS ANGELES, CALIFORNIA

THIS DOCUMENT IS THE PROPERTY OF RJM DESIGN GROUP, INC. AND NO PART THEREOF SHALL BE USED, REPRODUCED, OR MODIFIED WITHOUT THE WRITTEN CONSENT OF RJM DESIGN GROUP, INC. © 2013 RJM DESIGN GROUP, INC. All rights reserved.



Continued,
See Below



Design Charette Base Plan

NAMES(NOMBRES): _____

GROUP(GRUPO) # _____

NORWALK PARK

CITY OF NORWALK



Workshop Summary

August 20, 2014

INTRODUCTION

This report summarizes the results of the workshop which was conducted as part of the public outreach effort to encourage community members to share ideas regarding the development of the Norwalk Park Master Plan. The site is located at 13000 Clarkdale Avenue in the City of Norwalk. The following lists the various steps in the process.

PROCESS

The process began with research, analysis and fact finding. The project team, consisting of representatives from the County of Los Angeles Department of Public Health, City of Norwalk, and RJM Design Group, first met to review the approach and methodology. Data collection began to establish a comprehensive database through a review and analysis of available pertinent information provided by the City and County. Site analysis exhibits were created that identified the existing site and adjoining uses. The critical region of investigation focused upon the immediate site and those sites physically adjacent to the project area.

WORKSHOP INTRODUCTION

As part of the planning process, a workshop was held on Wednesday, August 20th, from 6:00 pm to 9:00 pm at the Norwalk Arts & Sports Complex and Norwalk Park. Community members and representatives of the City and County attended the workshop. Vickie Yoshikawa of the City of Norwalk and Louisa Franco of the County of Los Angeles Department of Public Health welcomed the participants and provided an introduction to the project. Robert Mueting of RJM Design Group reviewed the process for the evening's activities and presented background information including project information, current zoning, site analysis, opportunities and constraints, and then proceeded to facilitate the workshop activities.



WORKSHOP GOALS

The goals of the workshop are to:

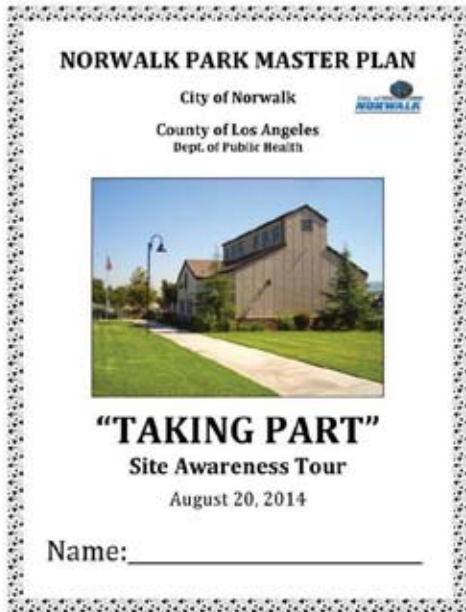
1. Provide an overview of the existing conditions of the site.
2. Conduct a tour of the site and adjacent areas to become familiar with site conditions.
3. Provide a forum for discussion of potential park issues and improvements.
4. Provide an opportunity to share ideas.

WORKSHOP FORMAT

The format of the workshop follows a method called TAKING PART which is based on the theory that we all are inherently creative and that the real task for group leaders / teachers is to help us release our creativity. In TAKING PART we use many devices to release creativity – among these are actual experiences, becoming aware together so as to develop a common language, sharing experiences so as to increase communication. Each person’s feelings and attitudes have equal value. There are no experts who have “the answer”. As the workshop progresses, more and more energy is released and more and more interaction of creative ideas occurs until eventually some forms of creative consensus about the project emerge.

SITE TOUR

The site tour was conducted at the beginning of the workshop. Each participant was given a TAKING PART Workbook (English or Spanish) which contained a series of comments and questions to answer as they walked the tour route.



DISCUSSION WORKSHOP

After the site tour, participants were divided into eight (8) different working groups for the discussion process. Each member of the group sat at a table with materials that included a flip chart, tablet, pens and markers to record their discussions. Volunteers were requested from each group to act as recorder/presenter. During the course of the workshop, five topics were presented for individual consideration and group discussion.

Below are the topics discussed:

- *What do you **like** best about Norwalk Park?*
- *What do you **like the least** about Norwalk Park?*
- *What are your most important **issues or concerns** related to Norwalk Park?*
- *What could be done to **address these issues or concerns** at Norwalk Park?*
- *What **park facilities and/or amenities** would make Norwalk Park an ideal place to exercise, picnic, and visit?*
- *What **recreation activities/facilities** might be located along the vacant parcels adjacent to the freeway east of Norwalk Park?*



Initially, participants were asked to individually respond on forms that were distributed before the presentation of each topic. They were encouraged to list as many responses that came to mind.

A group discussion then began with individual members of each group sharing their responses with the entire group. Time was allotted for the groups to gain consensus on their top responses to the particular topic. Following each topic discussion, the group's presenter reported their findings to all of the workshop participants.

Upon completion of the group presentations of the top priorities for each topic, all individual topic response forms were collected.

WORKSHOP SUMMARY

After the presentations were given, the consultant team identified the consensus responses of all groups. They are listed below:

TOPIC 1a

What do you ***like the most*** about Norwalk Park?

- ❖ Open Space
- ❖ Multiple Activities/Facilities
- ❖ Location

TOPIC 1b

What do you ***like the least*** about Norwalk Park?

- ❖ Not Enough Lighting
- ❖ Safety/Security Issues
- ❖ Not Enough Shade

TOPIC 2a

What are your most important ***issues or concerns*** related to Norwalk Park?

- ❖ Safety/Security
- ❖ Lights/Lighting
- ❖ Outdated Facilities
- ❖ Restrooms

TOPIC 2b

What could be done to ***address these issues or concerns*** at Norwalk Park?

- ❖ More Lighting
- ❖ Increase Safety/Security Patrols
- ❖ Walking Track/Trails
- ❖ Add Restrooms



TOPIC 3

What **park facilities and/or amenities** would make Norwalk Park an ideal place to exercise, picnic, and visit?

- ❖ Exercise Equipment
- ❖ Walking Trail/Track
- ❖ Playground
- ❖ Picnic Areas
- ❖ Shade

TOPIC 4

What **recreation activities/facilities** might be located along the vacant parcels adjacent to the freeway east of Norwalk Park?

- ❖ Trails
- ❖ Picnic Areas
- ❖ Gardens

GROUP CONCEPT PLANS

The design charette followed, during which participants explored, discussed and developed actual concepts together for the Norwalk Park improvements. Each group was asked to take the consensus responses and utilize their creative energy to develop a concept plan for the site. Based upon participant input, eight (8) alternatives were prepared by the groups during the workshop. Diagrammatic plan alternatives were drawn based upon the design concepts developed by each group participating at the workshop indicating proposed site land uses, configuration, and access.

CONCLUSION

Upon presentation of the consensus responses for each topic and each group's plan, all individual topic response forms were collected. The workshop participants were thanked for their involvement and the workshop adjourned.

The following chart represents the exact wording provided by each group on large format paper. They are aggregated here and color-coded to show the workshop consensus responses.



WORKSHOP SUMMARY CHARTS

Topic 1a What do you **like the most** about Norwalk Park?

GROUP 1	GROUP 2	GROUP 3	GROUP 4	GROUP 5	GROUP 6	GROUP 7	GROUP 8
Plenty of <u>open space</u>	<u>Centrally located</u> to other recreation activities	<u>Openness</u>	Lots of <u>space</u>	<u>Open fields</u>	<u>Weekend activities</u>	<u>Open space</u>	<u>Variety of facilities</u>
For <u>multiple activities</u>	Lots of <u>activities</u> for all ages	<u>Multiple use of facilities</u> for all ages	<u>Many facilities</u> to choose from	<u>Multiple facilities</u> available (pool, teen center complex, Sproul House/barn)	Aquatic Pavilion	Cleanness	<u>Open space / green grass</u>
Sk8 Park	Lots of <u>open space</u>	<u>Location</u> to community	Teen Center	Trees	<u>Basketball courts/sports complex</u>	<u>Activities</u> - Lots going on	Free classes
<u>Basketball court</u>							
Picnic area							

TOP 3 CONSENSUS RESPONSES TO “LIKES”

OPEN SPACE
MULTIPLE ACTIVITIES/FACILITIES
LOCATION

Other Likes:

Basketball Courts, Aquatic Pavilion, Cleanness, Skate Park, Teen Center, Trees, Free Classes, Picnic Area

Topic 1b What do you like the least about Norwalk Park?

GROUP 1	GROUP 2	GROUP 3	GROUP 4	GROUP 5	GROUP 6	GROUP 7	GROUP 8
<u>Not enough light</u>	Renovate the <u>playground!</u>	No shade structures	No shade at the picnic area	<u>Not enough/not good lighting</u>	Safety -Won't find us here at night	<u>Not enough shading</u>	Security - "Friendly" eyes to watch
				(safety issue)	-Poor lighting -Loitering -Drugs, alcohol, shootings		
Not enough water fountains	Drugs and alcohol (safety of the park)	<u>Lights - not enough</u>	No lighting -	Poor walking/ pedestrian pathways	Lack of Shade -We need shade structures	Lighting	Lighting - more and brighter
	<u>More lighting</u>		leads to <u>safety</u> issues				
<u>Picnic area</u> needs improvements	More recreational equipment (i.e. volleyball nets, outdoor gym equipment, soccer, etc.)	Skate Park (everything)	Restrooms are not updated	Playground outdated, old faded	Empty space not being used!	Restrooms	More <u>walking paths</u> -Into -Around
- <u>Shade</u>			in addition to <u>playground</u>				
-Sink to rinse things out -more grills							
		Very little: Restrooms/ Cleanliness					More - Playground -Picnic tables

TOP 3 CONSENSUS RESPONSES TO "DISLIKES"

NOT ENOUGH LIGHTING
SAFETY/SECURITY ISSUES
NOT ENOUGH SHADE

Other Dislikes:

Playground, Restrooms, Walking Paths, Picnic Area, Water Fountains, Recreational Equipment, Skate Park, Empty Space

Topic 2a What are your most important issues or concerns related to Norwalk Park?

GROUP 1	GROUP 2	GROUP 3	GROUP 4	GROUP 5	GROUP 6	GROUP 7	GROUP 8
<u>Safety</u>	<u>Lighting</u> -No lights = No people	<u>Restrooms</u>	<u>Security</u>	<u>Safety / Security</u>	<u>Safety</u>	<u>More lights</u>	<u>Security</u>
Signs -Maps/direction -Activity list	<u>Safety!</u>	<u>Lighting</u>	<u>Outdated facilities</u>	<u>Lighting</u>	Needs to be more inviting / welcoming to come to park	<u>Security</u>	<u>-Boring/old/outdated facilities/war bunker</u>
Bike lanes -Lack of lanes	<u>Shading</u> (not enough trees)	<u>Safety:</u> -Equipment -Patrolling -Signage	Picnic area	Boring / no activities		<u>Additional Restrooms</u>	<u>Shade</u> -benches -baseball -playground
		Walking path throughout the park					

TOP 4 CONSENSUS RESPONSES TO "ISSUES OR CONCERNS"

SAFETY/SECURITY
LIGHTS/LIGHTING
OUTDATED FACILITIES
RESTROOMS

Other Issues or Concerns:

Shade, signs, More Inviting Entrance, Bike Lanes, Picnic Area, Boring/No Activities, Walking Path

Topic 2b What could be done to **address these issues or concerns** at Norwalk Park?

GROUP 1	GROUP 2	GROUP 3	GROUP 4	GROUP 5	GROUP 6	GROUP 7	GROUP 8
Bicycle control	<u>More lighting</u>	<u>Add more / update (restrooms)</u>	<u>More police appearances</u>	Increase amenities / activities	<u>Lighting (LED)</u> <u>Patrolling by community</u>	<u>Add brighter lights</u>	<u>Lighting</u> -Solar -Remote controlled
Functions map guide	<u>More park patrol</u> – (Neighborhood watch)	<u>Add additional lights</u>	Replace and fix (facilities)	Increase safety = decrease bad people	-Activities at night - <u>Lighting</u> Exercise areas - <u>Walking track with cork</u>	<u>P.S. patrolling</u>	-Color facilities -Renovate play equipment
Sound barrier -Emergencies	More trees that don't require a lot of water!	-Public safety -Visible/information	Spread them to have privacy (picnic areas)	<u>Brighter and white lights</u>		<u>Add restrooms</u>	<u>Park ranger</u> -AKA friendly security
		<u>Build it!</u> (Walking path)		<u>Walking trail around park,</u> pond, zoo, garden = community involvement			

TOP 4 CONSENSUS RESPONSES TO “ADDRESS ISSUES OR CONCERNS”

ADD MORE LIGHTING
INCREASE SAFETY/SECURITY PATROLS
WALKING TRACK/TRAILS
RESTROOMS

Other Address Issues or Concerns:

Bicycle Control, Increase Amenities/Activities, Map Guide, Replace/Fix Facilities, Exercise Areas, Color Facilities, Renovate Play Equipment, Sound Barrier-Emergencies, Drought-Tolerant Trees, Spread Out Picnic Areas, Pond, Zoo, Garden, Community Involvement

Topic 3 What **park facilities and/or amenities** would make Norwalk Park an ideal place to exercise, picnic, and visit?

GROUP 1	GROUP 2	GROUP 3	GROUP 4	GROUP 5	GROUP 6	GROUP 7	GROUP 8
Map -Directions -Activities coming up	<u>Exercise equipment</u>	<u>Rubber track / walking trails -</u> <u>Exercise circuits</u>	<u>Exercise equipment</u>	<u>Improved picnic areas</u> (Shade, BBQ, tables)	Dog park section	Better <u>shading</u>	<u>New playground</u> with 5 - 12 equipment - Big! Spectacular!
Solar power <u>light</u>	<u>Walking / running trail (or track)</u>	<u>Family picnic areas</u>	<u>Walking trail around the park</u>	<u>Exercise equipment</u>	<u>Multi-use sports field</u> -Softball -Soccer/football	<u>Walking trails (rubber or dirt)</u>	<u>Adult exercise equipment</u> - together and spread out
<u>Outside exercise equipment</u>	<u>Appealing picnic area</u>	<u>Beach volleyball court</u>	<u>Drinking fountains</u>	<u>Playgrounds</u>	<u>Water playground</u>	<u>Better playgrounds</u>	Educational plaques -Roses -Water well
More <u>water fountains</u>	Snack bar	<u>Water play area (splash pad)</u>	More bright <u>lights</u>	Improve <u>restrooms</u>	Bike Fitness	Resting benches	<u>Walking track</u>
More signs in the parking lot	<u>Beach volleyball</u>	Rubberized tot area (like Cerritos)	More <u>sport facilities</u>	More activities	Women's Weight room	<u>Restrooms</u>	<u>Drinking fountains</u>
					<u>Walking path bright lights</u>		

TOP 5 CONSENSUS RESPONSES "PARK FACILITIES/AMENITIES"

EXERCISE EQUIPMENT
WALKING TRAIL/TRACK
PICNIC AREAS
PLAYGROUND
SHADE

Other Facilities/Amenities:

Lights, Multi-Sports Fields, Drinking/Water Fountains, Water Play, Beach Volleyball, Restrooms, Map/Signage, Dog Park, Educational Plaques, Snack Bar, Bike Fitness, Resting Benches, Rubberized Tot Lot, Women's Weight Room

Topic 4 What **recreation activities/facilities** might be located along the vacant parcels adjacent to the freeway east of Norwalk Park?

GROUP 1	GROUP 2	GROUP 3	GROUP 4	GROUP 5	GROUP 6	GROUP 7	GROUP 8
<u>2-lane jogging track</u>	<u>Nature trail alongside 5 Fwy strip</u>	<u>Nature/bike/walking trail with lights, plants, and exercise circuits</u>	<u>Petting zoo</u>	Stream (kid friendly)	<u>Dog Park</u>	Small Ball Fields	<u>Dog Park</u>
<u>Picnic Pads</u>	Bulletin board/directory on bridge/park	With outlets into neighborhoods	Baseball, softball and soccer fields	Animal play structure	Amphitheater	Small Pool	<u>Picnic Pads</u>
<u>Informal garden</u>	<u>Picnic Pads</u>	<u>Petting zoo!</u>	Small <u>tot lot</u>	Koi pond	<u>Picnic Pads</u>	Small Soccer Area	25 parking space lot
<u>Restrooms</u>			<u>Exercise equipment</u>	<u>Dog Park</u>	<u>Exercise stations</u>	<u>Formal Garden</u>	½ basketball court
<u>Outdoor exercise station</u>				Zoo (with <u>petting zoo</u> and train ride in zoo)	<u>Garden</u>		<u>Restroom (2)</u>
				Pony rides	<u>Restrooms</u>		Adult <u>exercise station</u>
					Bike racks/lockers		<u>Walking path</u>
							<u>Tot play equipment</u>

TOP 5 CONSENSUS RESPONSES FOR “RECREATION ACTIVITIES/FACILITIES ALONG VACANT PARCELS”

TRAILS
PICNIC
DOG PARK
SMALL SOCCER/BALL FIELDS
PETTING ZOO

Other Activities/Facilities along vacant parcels:

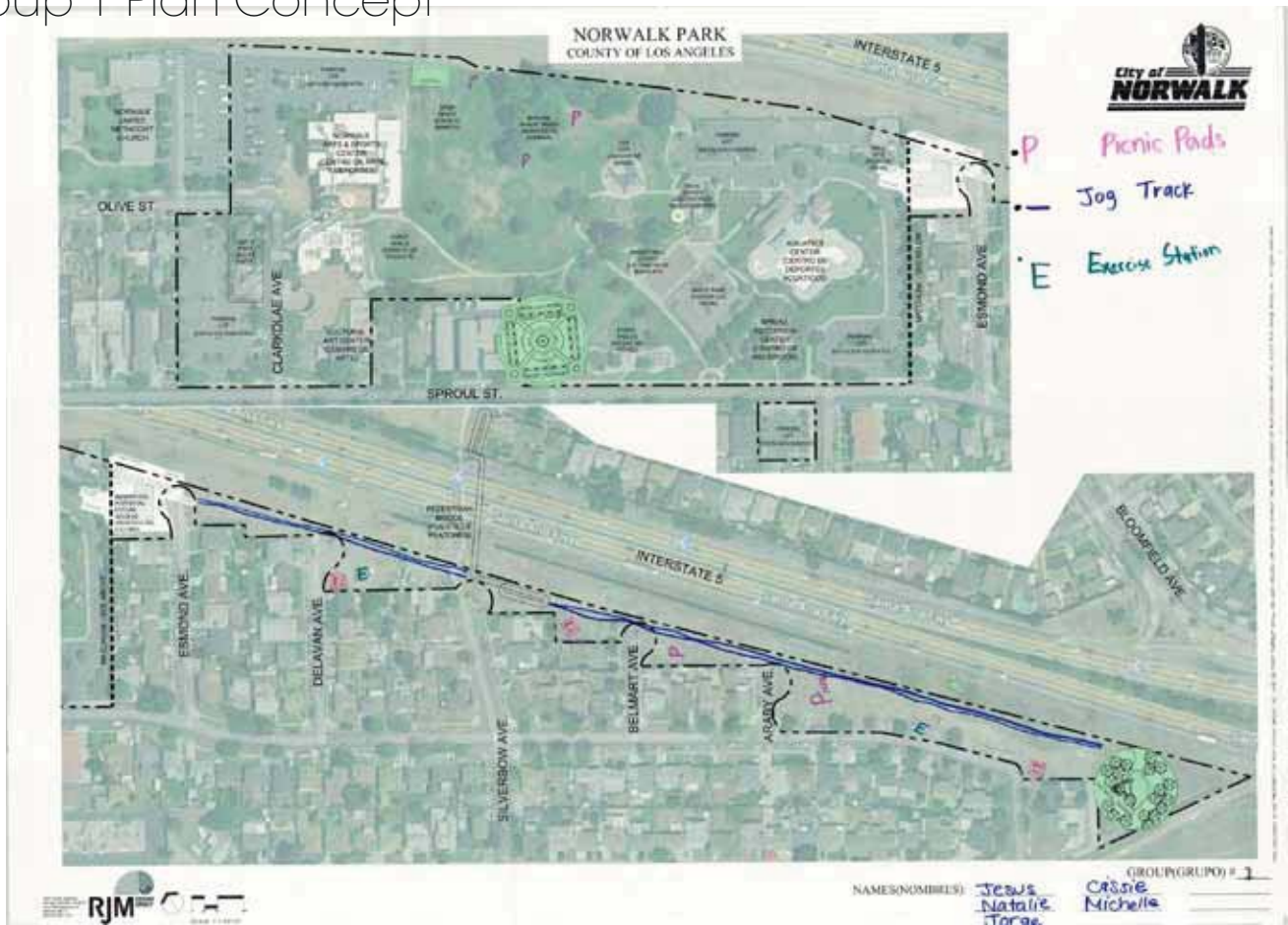
Garden, Exercise Stations, Restrooms, Stream, Small Tot Lot, Directory, Outlets to Neighborhoods, Animal Play Structure, Amphitheater, Small Pool, Koi Pond, Parking, Half-Court Basketball, Pony Rides, Bike Racks

NORWALK PARK

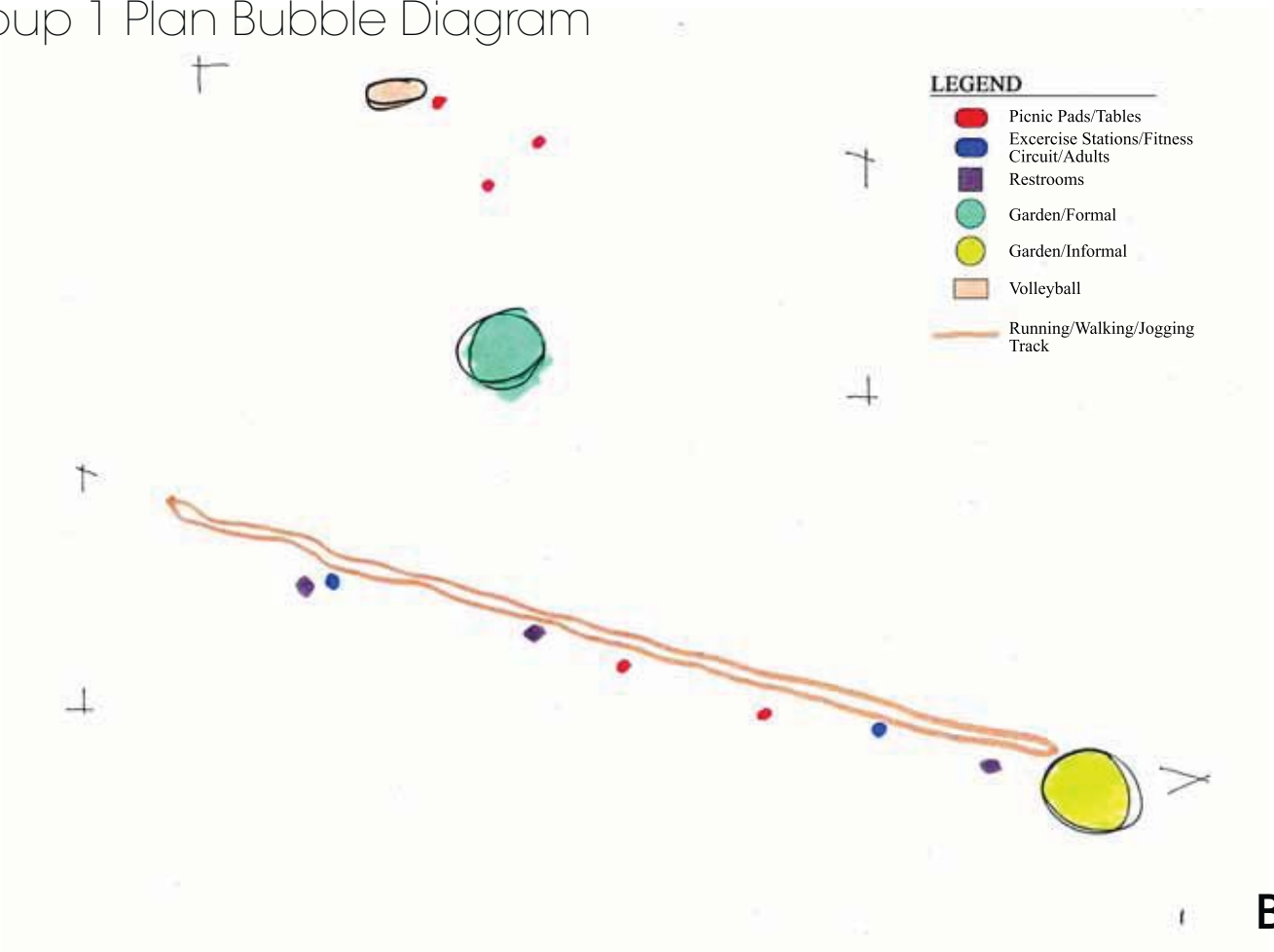
GROUP PLAN SUMMARY

PROGRAM ELEMENTS	Group 1	Group 2	Group 3	Group 4	Group 5	Group 6	Group 7	Group 8	Total # of Groups that Identified Element
Amphitheatre	✓		✓			✓			2
Ball Field - Small						✓	✓		2
Basketball – Half Court/Full Court		✓				✓		✓	3
Benches							✓		1
Dog Park						✓		✓	2
Drinking Fountains							✓		1
Exercise Stations/Fitness Circuit/Adult	✓		✓			✓		✓	4
Garden – Formal	✓		✓		✓		✓		4
Garden – Informal	✓	✓		✓		✓	✓	✓	6
Interactive Trail Features		✓							1
Labyrinth		✓							1
Lighting		✓					✓		2
Mini Train				✓	✓				2
Nature Center			✓						1
Parking (Additional)						✓	✓	✓	3
Petting Zoo				✓					1
Picnic Pads/Tables	✓	✓	✓	✓	✓	✓	✓	✓	8
Picnic Shelters/Shade Structures	✓	✓	✓	✓	✓	✓	✓	✓	8
Playground – New/Update/Bigger			✓	✓	✓	✓	✓	✓	6
Restrooms	✓	✓	✓	✓	✓	✓	✓	✓	8
Running/Walking/Jogging Track			✓						1
Signage/Welcome					✓				1
Skate Park - In-Ground/Built-In/Update/Equipment				✓	✓	✓	✓		4
Snack Bar			✓						1
Soccer - Overlay/Small						✓	✓		2
Swings				✓					1
Teen Center (Double Deck)				✓					1
Tennis Court							✓		1
Trash Receptacle							✓		1
Trees				✓					1
Volleyball	✓	✓	✓	✓	✓	✓	✓	✓	8
Walking Trail	✓	✓	✓	✓	✓	✓	✓	✓	8
Water Feature/Play/Mister/Pool		✓	✓		✓		✓		4

Group 1 Plan Concept



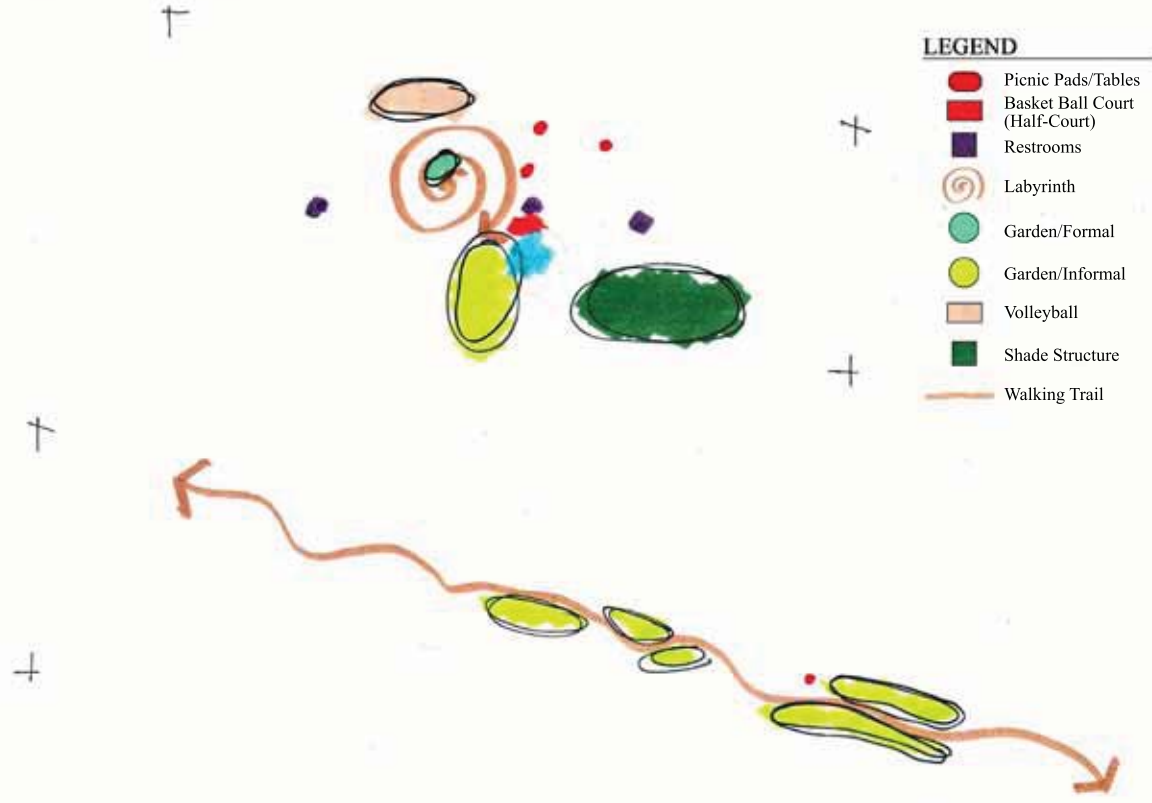
Group 1 Plan Bubble Diagram



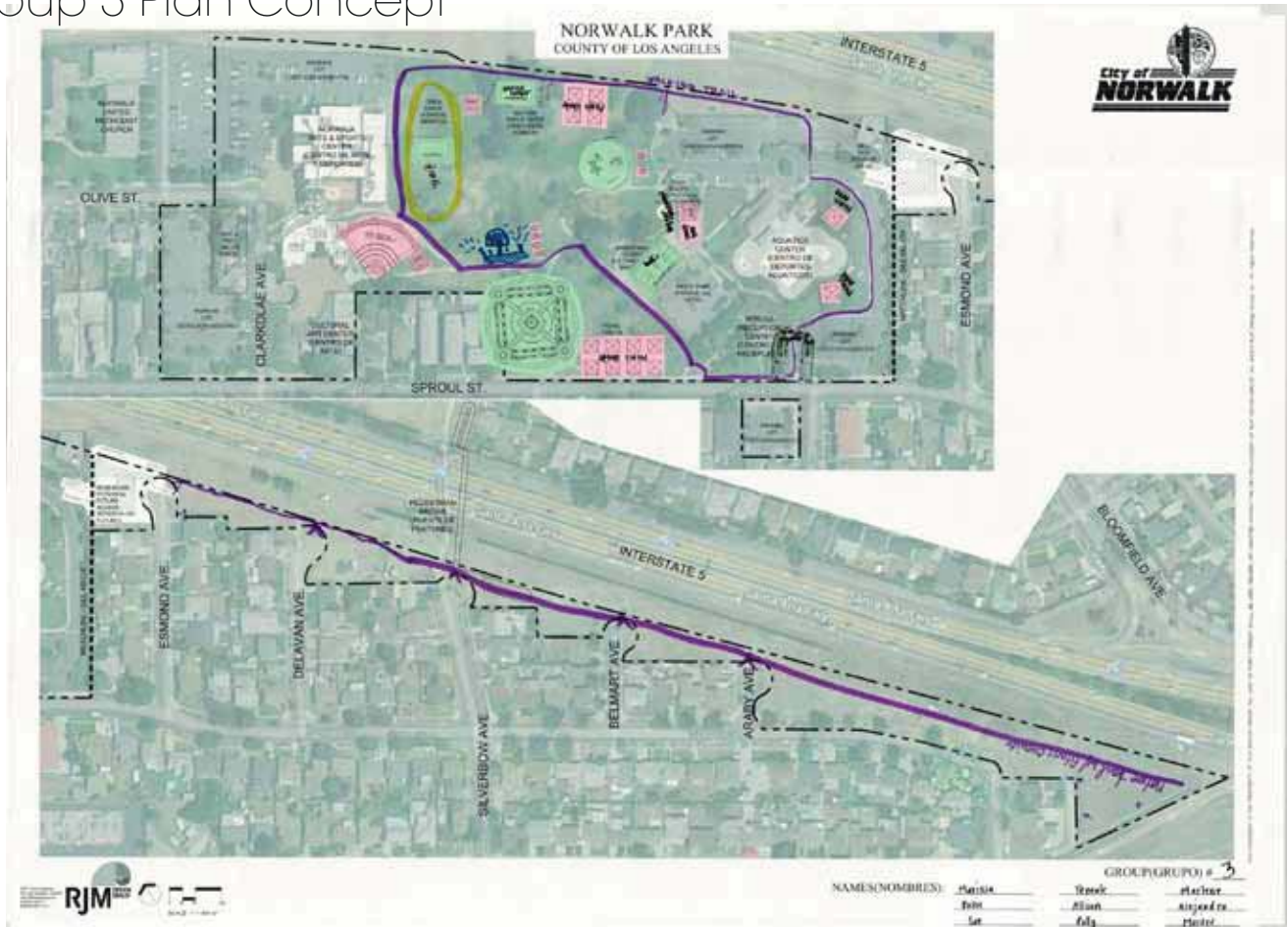
Group 2 Plan Concept



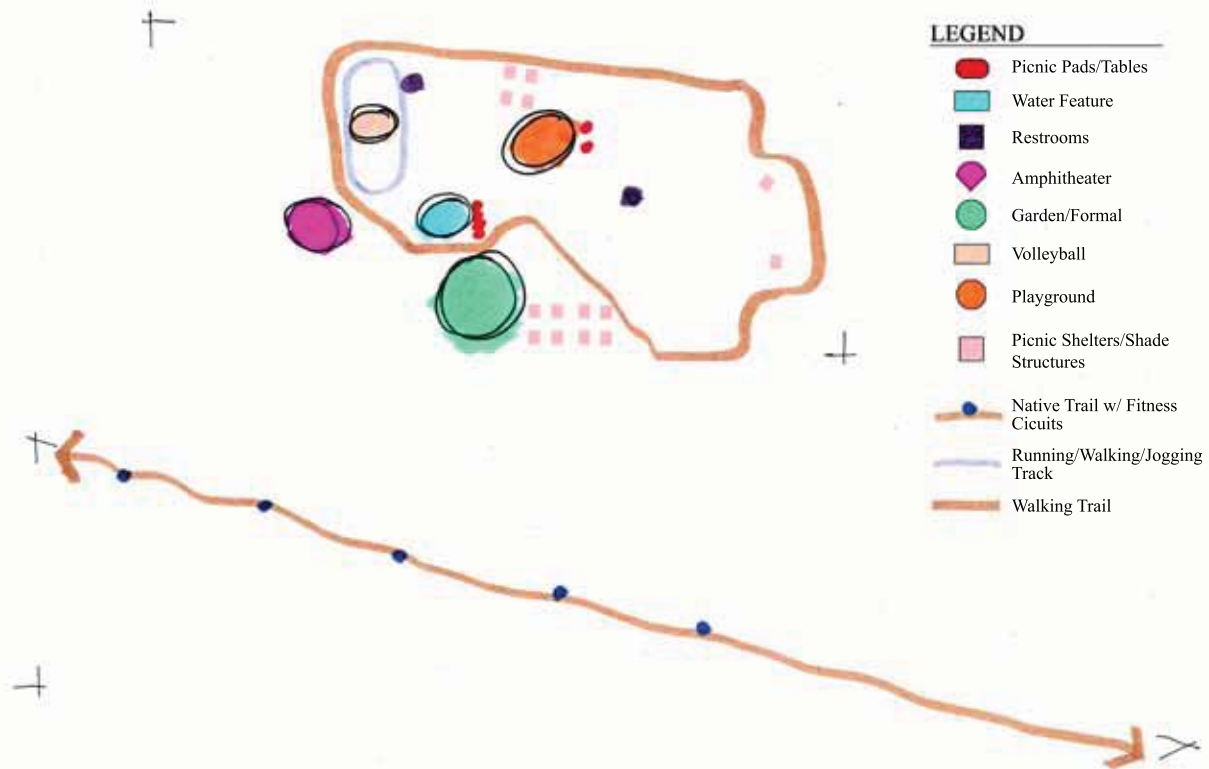
Group 2 Plan Bubble Diagram



Group 3 Plan Concept



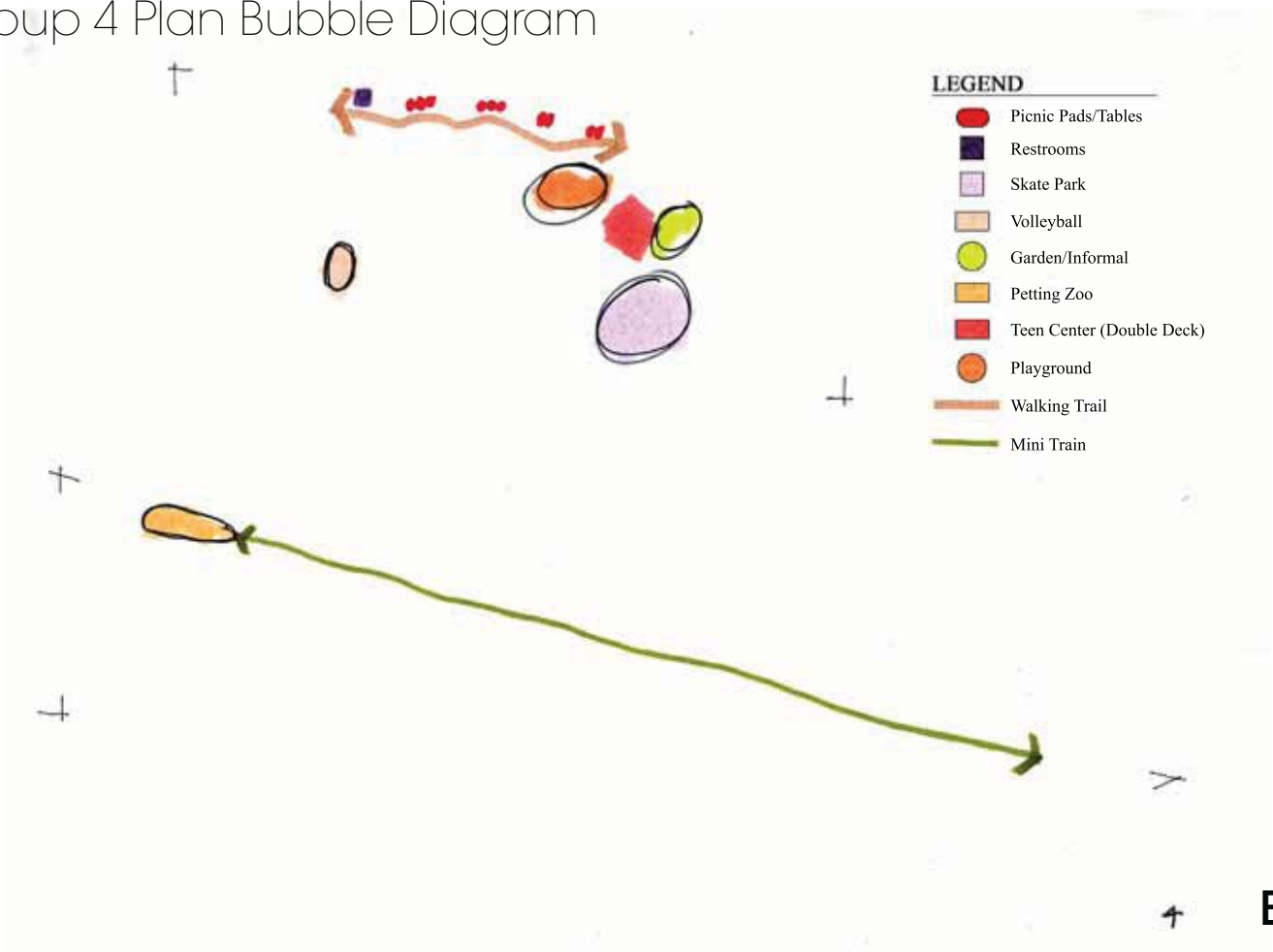
Group 3 Plan Bubble Diagram



Group 4 Plan Concept



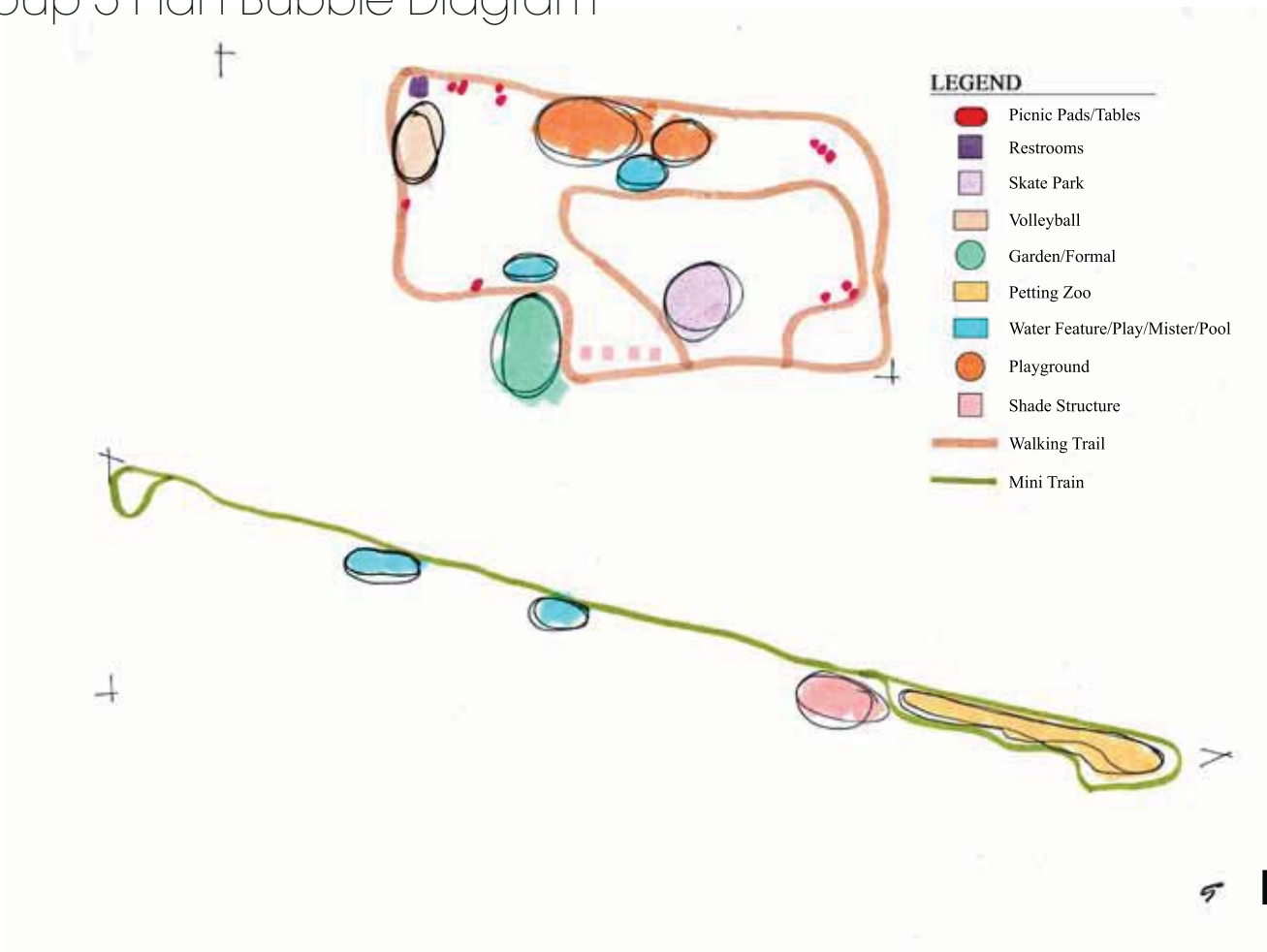
Group 4 Plan Bubble Diagram



Group 5 Plan Concept



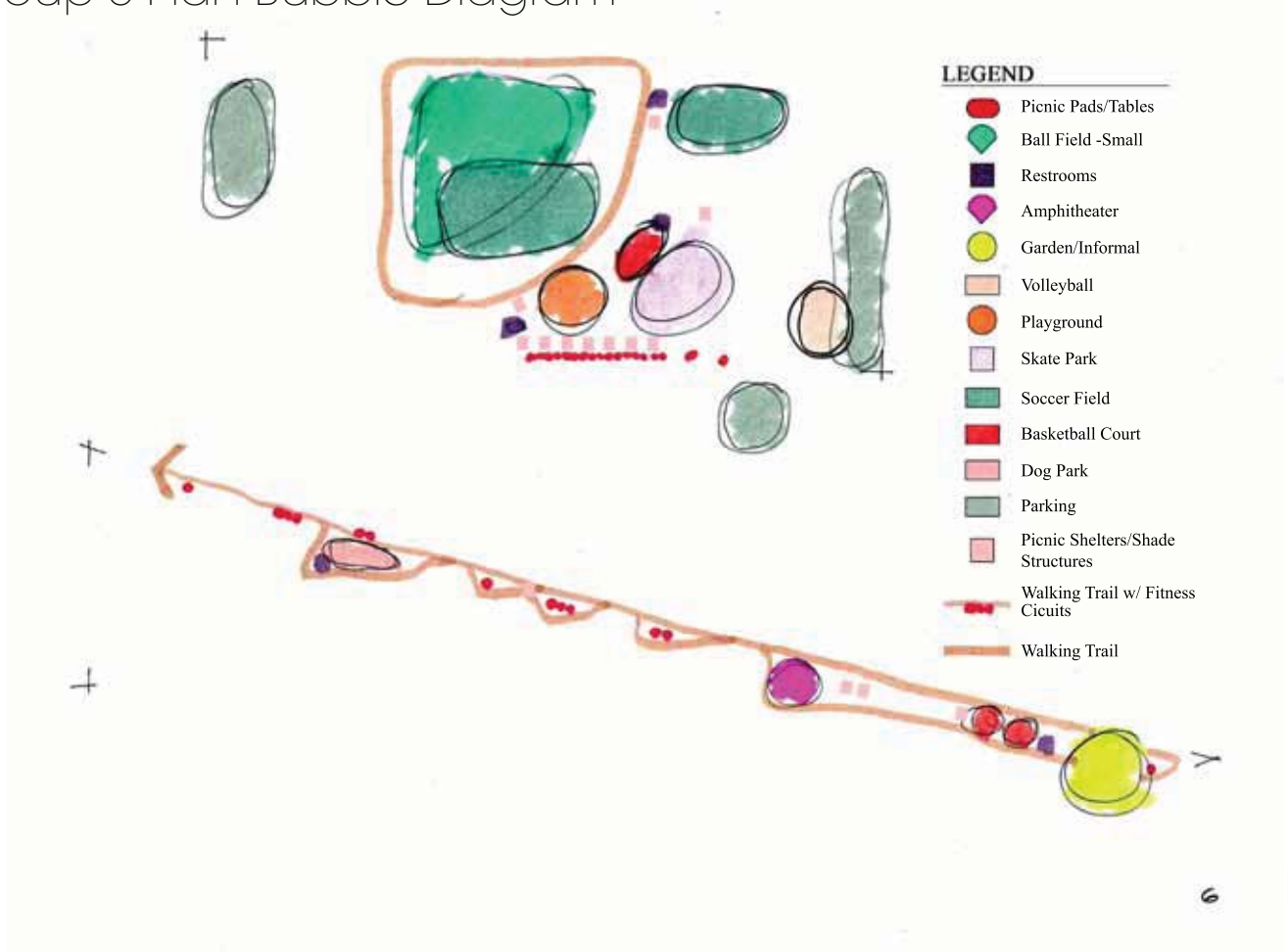
Group 5 Plan Bubble Diagram



Group 6 Plan Concept



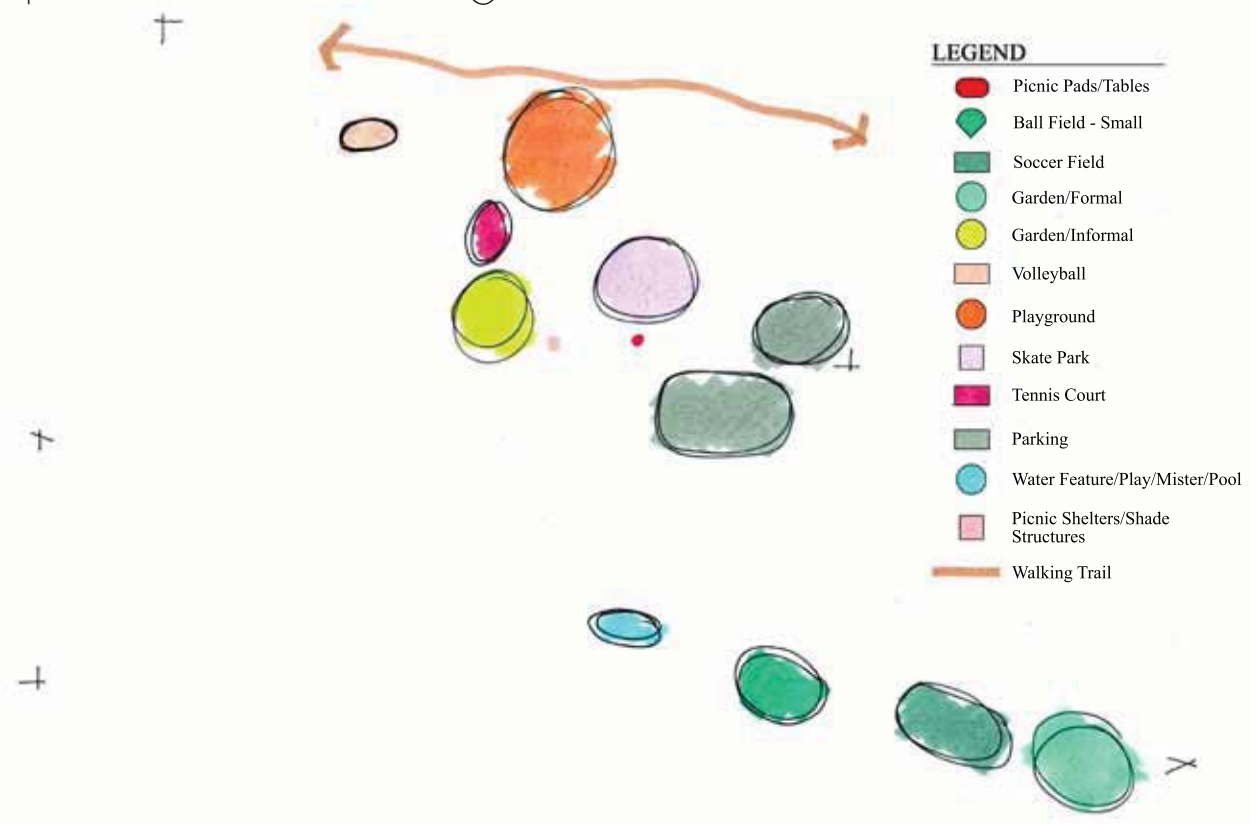
Group 6 Plan Bubble Diagram



Group 7 Plan Concept



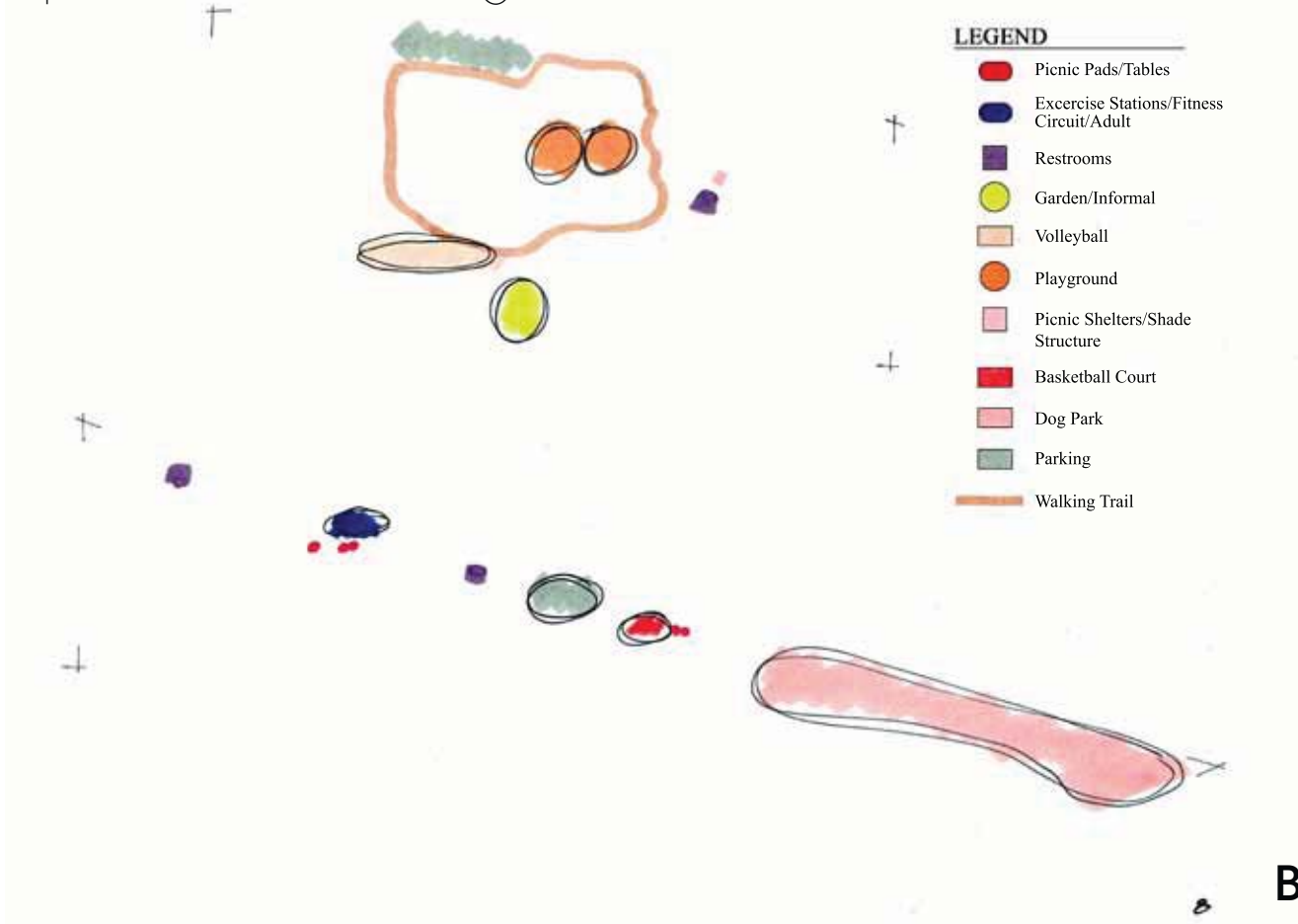
Group 7 Plan Bubble Diagram



Group 8 Plan Concept



Group 8 Plan Bubble Diagram



NORWALK PARK
COUNTY OF LOS ANGELES

LEGEND



- Picnic Pads/Table
- Restroom
- ◆ Amphitheater
- Garden
- Volleyball
- Playground
- Skate Park
- Soccer Field
- Exercise stations/Fitness Circuit/Adult
- Dog Park
- Parking
- Picnic Shelters/Shade Structures
- Water Feature/Play/Mist/Pool
- Walking Trails



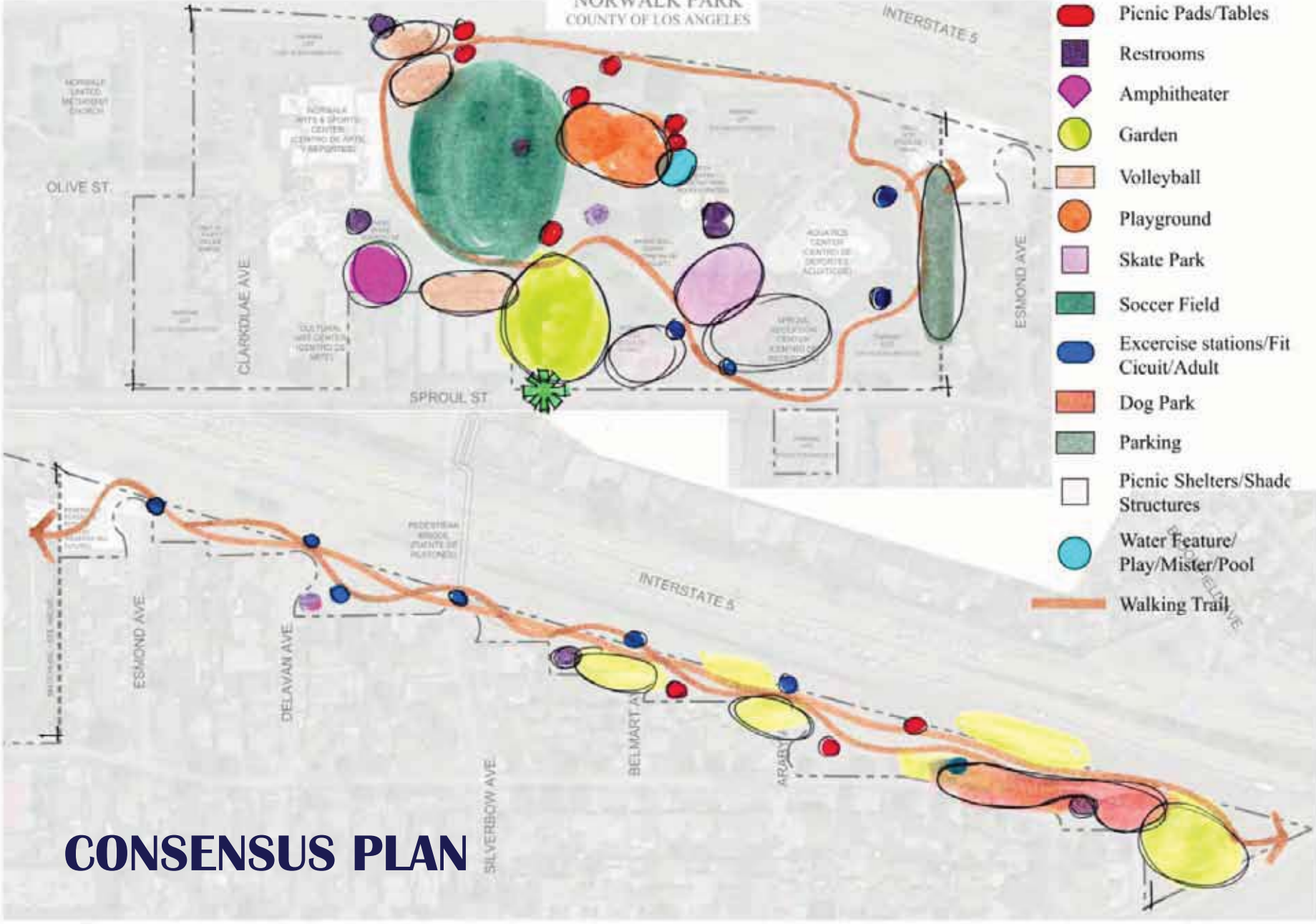
COMPOSITE PLAN



NAMES(NOMBRES): _____

GROUP(GRUPO) # _____

NORWALK PARK
COUNTY OF LOS ANGELES



CONSENSUS PLAN



NAMES(NOMBRES): _____

 GROUP(GRUPPO) # _____

SITE CONTEXT



WORKSHOP



WORKSHOP AGENDA



COMMUNITY INPUT

Stakeholders Groups:

- A. Seniors
- B. Teens
- C. Norwalk Women's Club
Norwalk Community Coordinating Council
- D. Norwalk Park Recreation Leaders
Boy Scouts of America

Consistent Responses:

- Security issues present at the park (Alcohol & Drug Use)
- Add extra walkway or walking paths
- Rubberized Running Track
- Add shading throughout the park
- Add outdoor fitness equipment
- Add drinking fountains

- Primary reason for not visiting the park: Security Issues
- If attending active facilities, what is missing at the park to make an active physical activity? Need walking / jogging pathway with distance signage
- Areas of agreement that more water fountains are needed, as well as shade throughout the park, especially picnic area, playground and skate park.



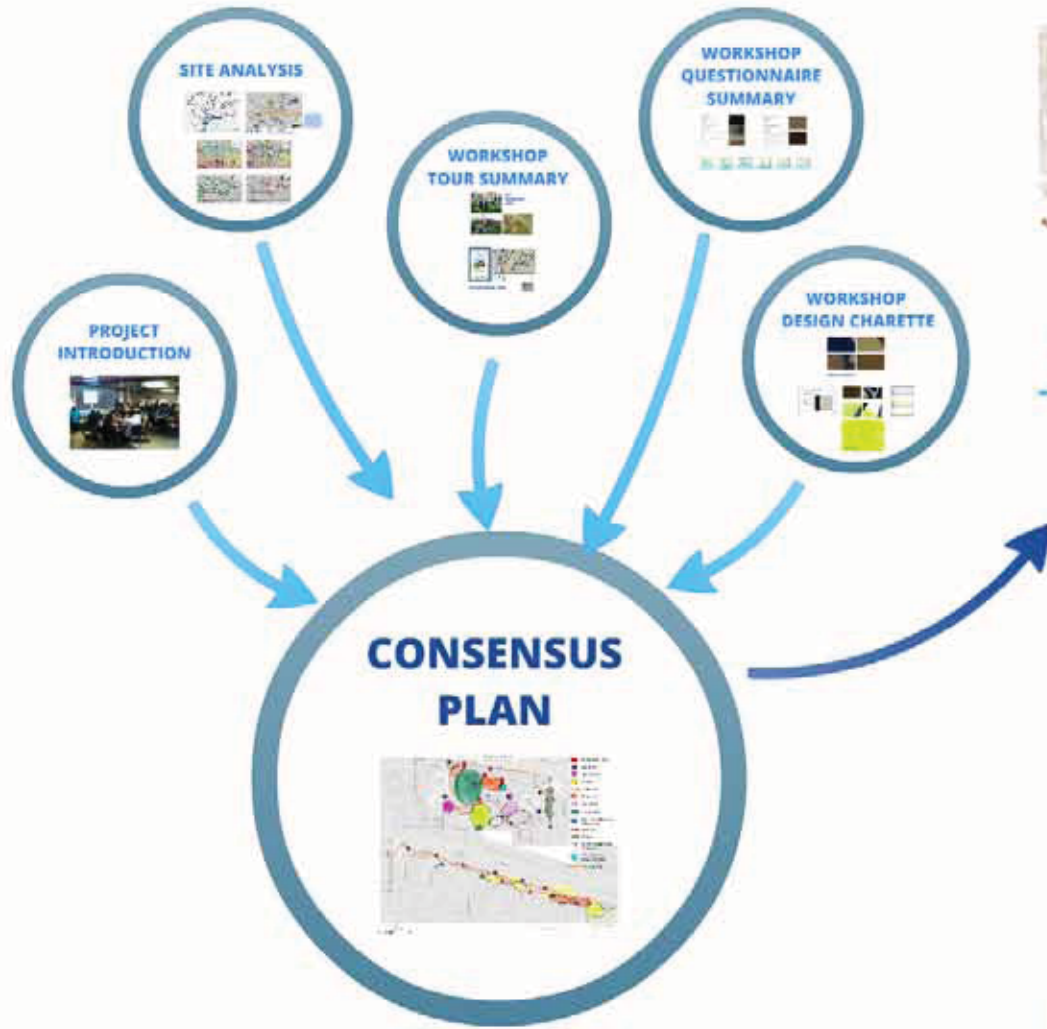
Norwalk Park

City of Norwalk
County of Los Angeles

WORKSHOP #1
August 20, 2014



WORKSHOP PROCESS



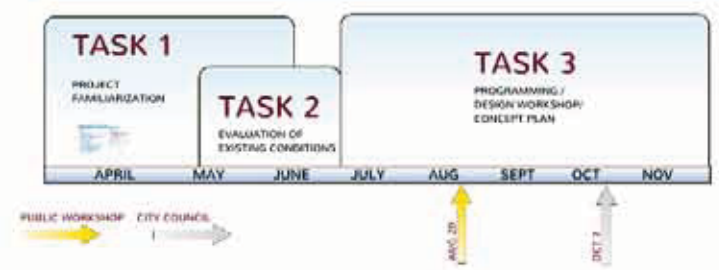
PRELIMINARY CONCEPT PLAN



SCHEMATIC PLANS



PROJECT TIMELINE



Norwalk Park City of Norwalk
County of Los Angeles

WORKSHOP SUMMARY
October 7, 2014



-

Norwalk Park

Community Outreach Summary

Contents

Group Discussion Overview	2
Senior Discussion Group	3
Teenage Group Discussion.....	4
Norwalk Women’s Club & Norwalk Community Coordinating Council Group Discussion	6
Norwalk Park Recreation Leaders & Boys Scouts of America Group Discussion.....	8
Informal Conversations Overview	10
Informal Conversations Responses.....	Error! Bookmark not defined.
Online Blog Commentary.....	13

DRAFT

Group Discussion Overview

On July 14, 2014 and July 29, 2014 four group discussions were held with a variety of stakeholders regarding the proposed Master Plan.

Stakeholders included:

- Seniors
- Teens
- Norwalk Women's Club
- Norwalk Community Coordinating Council
- Norwalk Park Recreation Leaders
- Boy Scouts of America

Several consistent topics emerged throughout all of the group discussions. Topics included:

- Security issue present at the park (Alcohol & Drug Use)
- Add shading throughout the park
- Add drinking fountains
- Add outdoor gym equipment
- Add extra walkway or walking path with distance markers

The Norwalk community agreed that there is a security issue present at the park, especially as it relates to drug and alcohol use. All four participant group discussions brought up the security issue as a primary reason for not visiting the park as frequently or as a serious concern.

In promoting active lifestyles, group were asked questions on how what they felt was missing at the park to have it be a place that would be conducive for outdoor physical activity. Many participants expressed the need for a walking/jogging pathway in and around the park with distance signage.

Many participants also stated Norwalk Park becomes an increasingly hot place in the summer and spring months. Participants brought about this concern in all four group discussions and agreed that more water fountain stations are needed as well as shading throughout the park, especially in the picnic area, playground and skatepark areas.

Senior Discussion Group

Monday, July 14, 2014. Norwalk Park. Arts & Sports Complex.

9 participants.

The questions and responses are listed below:

1.) *How many of you go to Norwalk Park on a regular basis?*

- Most participants attend on a regular basis

For those of you who go to Norwalk Park on a regular basis, what is the main reason you visit Norwalk Park?

- Racquetball
- Walk
- Socialize

If you don't visit Norwalk Park regularly, why don't you visit more often?

- Security issue
- Add or extend the current cement walk path in park
- Picnic areas space is limited and too hot; need shading

2.) *Which amenities and/or activities offered at Norwalk Park do you like the most?*

- Basketball courts
- Aquatic center
- Sports equipment that is for rent

What other amenities and/or activities would you like to see at the park?

- Tennis courts
- Outdoor handball

3.) *How can we improve Norwalk Park to make it the ideal place to exercise?*

- Add walking trails
- Build a rubber track for walking
- Add posts that have doggie bags for people walking their pets
- Activities for seniors like Frisbee Golf

4.) *What time of day are you more likely to visit given your schedule? Do you visit the park on weekends?*

- Most participants visit the park in the mornings

Teenage Group Discussion

Monday, July 14, 2014. 10:00 AM. Norwalk Park : Arts & Sports Complex.

6 participants.

The questions and responses are listed below:

1. How many of you go to Norwalk Park on a regular basis? For those of you who go to Norwalk Park on a regular basis, what is the main reason you visit Norwalk Park? If you don't visit Norwalk Park regularly, why don't you visit more often?

- Most correspondents come once or twice a week
- Visit Liberty Park instead because of the volleyball courts with sand
- Most correspondents live near by
- Needs better basketball courts
- Visit Liberty park instead; it has running trails/tracks around basketball courts
- Visit Holifield Park instead; it has a baseball field. There are structured areas for different sports so that different sport activities don't interfere with one another

2. What do you like best about the park?

- Skate Park is fun, but needs to be upgraded; the course is dangerous and is why not as many people use it anymore (in-ground concrete skate parks are safer)

What do you usually do when you are here?

- Teenage center
- Hang out with friends
- Play soccer

Why do you participate in that activity?

- Skateparks are fun
- The park is a good social space

3. What do you like the least about Norwalk Park?

- Security issue; drugs and undesirable people

What can be done to address this issue?

- More lighting
- A running track would help with more people presence
- Relocate the skatepark

4. Does the park offer enough low-cost or free activities?

- Sports Complex has many
- *Not enough*

What type of free or low-cost activities would you like to see at the park?

- Outdoor gym equipment
- A rubberized track for runners

5. If you were recommending the best time to visit the park to a friend, what would be the best time and why?

- Late afternoon during summer
- Too hot in afternoon and not enough shade

6. Do you exercise at the park? Why or why not?

- Most people do not exercise in the outdoor area
- no equipment or track at the park

7. How can we improve the park to make it the ideal place to exercise?

- Outdoor gym equipment
- Outdoor track
- Add soccer fields
- Add volleyball courts

Norwalk Women's Club & Norwalk Community Coordinating Council Group Discussion

Tuesday , July 29, 2014. 9:30 AM. Norwalk Park: Arts & Sports Complex.

7 participants.

The questions and responses are listed below:

- 1. How many of you go to Norwalk Park on a regular basis? For those of you who go to Norwalk Park on a regular basis, what is the main reason you visit Norwalk Park? If you don't visit Norwalk Park regularly, why don't you visit more often?**

- Most participants do not attend on a regular basis

For those of you who go to Norwalk Park on a regular basis, what is the main reason you visit Norwalk Park?

- Most correspondents report living in the neighborhood as a reason for visiting
- Grandchildren visit the park

- 2. What do you like best about Norwalk Park? What amenities and/or activities would you like to see at the park?**

- Correspondents report running as an activity; would like to have a rubberized track
- Like the green space and trees but currently not enough of them

Would like to see:

- space to walk dogs
- walking trail
- more seating and benches
- needs water fountains

- 3. What do you like least about the Norwalk Park? What do you feel the park is missing and can be improved?**

- Would like to see an end to drug use at the park
- Need more shading in picnic areas
- Would like to see Nature Center return
- Would like to see more indigenous plants
- Too dark at night

What can be done to address this issue?

- Would like to see signage around park with Public Safety phone number
- More lighting

- 4. How can we improve the park to make it the ideal place to exercise?**

- correspondents universally agreed on outdoor gym equipment

- a running/walking path
- a space to rest after walking around

5. *What time of day are you more likely to visit given your schedule? Do you visit the park on weekends?*

- In the summer during the day
- Morning for runners

6. *Lastly, does anyone have any other comments about Norwalk Park that you would like to share?*

- Park needs a shaded picnic area
- Add water feature for kids to play in

DRAFT

Norwalk Park Recreation Leaders & Boys Scouts of America Group Discussion

Tuesday , July 29, 2014. 9:30 AM. Norwalk Park: Arts & Sports Complex.

12 participants.

The questions and responses are listed below:

1. ***How many of you go to Norwalk Park on a regular basis? For those of you who go to Norwalk Park on a regular basis, what is the main reason you visit Norwalk Park? If you don't visit Norwalk Park regularly, why don't you visit more often?***

- Most correspondents report not visiting park outside work hours
- Half of correspondents report visiting frequently before working at park
- Those that visit utilize the park to run
- Some report coming on weekends for birthday parties

For those of you who go to Norwalk Park on a regular basis, what is the main reason you visit Norwalk Park?

- Most correspondents report security issue as reason for not visiting

2. ***What do you like best about Norwalk Park?***

- Skatepark; there are not many around the Norwalk area
- Picnic area
- Green space utilized for volleyball or little leagues for children
- Graffiti is kept to a minimum
- Day camp is popular
- Tables used for family gatherings

3. ***What do you like least about the Norwalk Park? What do you feel the park is missing and can be improved?***

- Too many gopher holes
- Trees that block open space
- Need more shading around playground/picnic areas
- Alcohol and drug consumption

4. ***How can we improve the park to make it the ideal place to exercise?***

- Park could incorporate rubberized walking/running trail
- A track with distance markers
- More water fountains
- Setting up permanent sport installations (i.e. soccer posts, volleyball courts, etc.)
- Update the playground ;add rubberized floor and shading
- Rent out sports equipment to general public

5. *What time of day are you more likely to visit given your schedule? Do you visit the park on weekends?*

- At noon; people take lunch breaks here
- During the day for the summer
- Seniors in the morning
- Nights would be ideal but no lighting

6. *Lastly, does anyone have any other comments about Norwalk Park that you would like to share?*

- Park should have posts with doggie bags
- Add outdoor fitness equipment like at other Norwalk parks
- Need more walkways around park
- Incorporate art mural along the freeway wall
- Add timer lighting at night
- Picnic tables along Sproul Complex under direct sunlight, making it uncomfortable
- Add seating areas near playground / outside pool area
- Soccer is a very popular sport at Norwalk
- Water feature (a fountain for younger children to splash in)
- Bring the barn back! (reference to Nature Center)

Informal Conversations with Park-Users

On Monday, July 14, 2014 approximately 20 informal conversations were held with park-users. The following questions were asked:

1. *What do you feel the park is missing?
What can be done to improve the park?*
2. *Why do you come to the park?*
3. *What do you like best about Norwalk Park?*
4. *What do you usually do when you are here?*
5. *Why do you participate in that activity?*
6. *What do you like least about Norwalk Park?*
7. *If you were recommending the best time to visit the park to a friend, what would be the best time and why?*
8. *Does the park offer enough low-cost or free activities?
What type of free or low-cost activities would you like to see at the park?
Do you have any ideas the City could offer these low-cost activities?*
9. *Do you exercise at the park? Why or why not?*
10. *How can we improve the park to make it the ideal place to exercise?*
11. *What time of day are you more likely to visit given your schedule?
Do you visit the park on weekends?*

One additional conversation was held at the St. Linus Catholic Church on Tuesday, July 29, 2014.

The data collected were also incorporated into the information presented in this section.

Several consistent topics emerged throughout all of the conversations. Topics included:

- Concern over drugs & alcohol
- Concerns about security
- Need for more shaded areas
- Need for outdoor gym equipment
- Bringing back the Nature Center (Petting Zoo)
- Adding a walking/jogging trail

Most of the individual conversations were conducted with parents who were visiting the park for its aquatic facility and Summer Day Camp. Participants were pleased with the maintenance of the park and its staff, stating that other than the undesirable activity that happens at the park, overall they feel Norwalk Park has greater potential to attract more visitors.

Parents also expressed concern over the lack of shading in areas where they supervise their children (playground, picnic benches, skatepark and areas surrounding the swimming pool). The Nature Center was also a reoccurring request for parents who previously enjoyed its presence at the park before it was removed.

Responses

1. What do you feel the park is missing? What can be done to improve the park?

- Most reported there is a need for security at night
- Enforce drug/alcohol use prohibition
- More trees
- Playground for 8-13 year olds
- Shaded areas (especially in picnic areas)
- The Nature Center (was previously there years ago)
- More parking
- Better BBQ facilities

2. Why do you come to the park?

- Enjoy fresh-air
- Aquatic Center
- Family gatherings
- Close to home
- Walk my dog
- Swimming lessons for children
- Visited the Nature Center

3. What do you like best about Norwalk Park?

- Pool is a major attraction
- My children play basketball
- Like the movies at the park
- Parking is ample
- Well maintained

4. What do you usually do when you are here?

- Kids Adventure Camp
- Walk around in mornings
- Play soccer

5. Why do you participate in that activity?

- Parents enjoy the activities kids do in summer camp.
- Kids Adventure Camp is well organized
- Sports Complex staff is friendly and efficient

6. What do you like least about Norwalk Park?

- Bathrooms are hidden and cannot see my children
- People who come to park to do drugs
- Playground feels unsafe for children, especially during summer heat

7. If you were recommending the best time to visit the park to a friend, what would be the best time and why?

- Mornings, but not enough activities
- Mornings because it is not hot
- Mornings because it is less crowded
- Late afternoon during summer
- Anytime during Sport Complex business hours; all activities are great

8. Does the park offer enough low-cost or free activities?

- Sports Complex has many
- Art activities
- Nothing in the outdoor areas

What type of free or low-cost activities would you like to see at the park?

- The Petting Zoo
- Most agree that enough activities are available

Do you have any ideas the City could offer these low-cost activities?

- Add a walking path
- Add outdoor gym equipment

9. Do you exercise at the park? Why or why not?

- Most people do not exercise in the outdoor area
- Enrolled in a gym membership elsewhere

10. How can we improve the park to make it the ideal place to exercise?

- Outdoor gym equipment
- Outdoor track
- Add soccer fields
- Add volleyball courts
- Longer hours to accommodate my schedule
- Longer hours for pool year round

11. What time of day are you more likely to visit given your schedule?

Do you visit the park on weekends?

- Most people do not visit during weekends
- Mornings on weekends

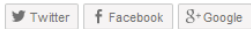
- Evenings on weekdays
- Weekends for birthday events
- Not enough activities during weekend

DRAFT

Online Blog Commentary

The www.norwalkparkplan.com website allowed for Norwalk community members to voice their opinion as well. A series of comments were posted on the website that displayed the ideas and comments from those who demonstrated interest in the proposed park master plan. Below is a snapshot of the actual webpage containing the information left on the website.

Share this:



Be the first to like this.

Categories: [Information](#) | [Permalink](#)

5 THOUGHTS ON "BE PART OF THE PLAN!"

[Leave a comment](#)



sally sanchez resident

June 9, 2014 at 6:23 pm

Zimmerman park is lonely and dangerous . It needs maybe a police substation or an activities recreation staff something, it is the closest park to me so we walk there with the kids but I feel like it is wasted land because it is not being used to its potential.

[Reply](#)



Shayne Kaurin

June 14, 2014 at 12:17 am

As a Norwalk resident, home owner, and avid skateboarder. I think it's imperative that the skate park is rebuilt and brought up to a safety standard. For years now the park has been in need of repair and a lot of metal ramps can cause injury because of their current condition. Keeping the skate park safe is a major part of giving the youth something to do that keeps them out of trouble and doing something positive.

[Reply](#)



SallySanchez

July 8, 2014 at 3:39 am

I think that's a great plan

[Reply](#)



Peter Gonzalez

July 7, 2014 at 5:19 am

Somehow connect norwalk park to the norwalk entertainment center (pedestrian bridge?)... Maybe this would increase traffic to the entertainment center and spur much needed redevelopment there as well as make the park more of a destination....

[Reply](#)



SallySanchez

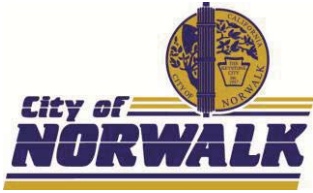
July 8, 2014 at 3:40 am

Sounds good

[Reply](#)

Leave a Reply

Enter your comment here



Norwalk Recreation and Park Services
Norwalk Park Survey



Date: _____

TELL US ABOUT YOURSELF

Zip Code: _____

Gender Female Male

Age Group: 5-14 15-19 20-30 31-50 51-65 over 65

VISITING NORWALK PARK

1. Do you go to Norwalk Park?

Yes (if YES, don't answer question 1e) No (Please skip to question 1e)

If Yes....

a. How often do you visit Norwalk Park?

Frequently (almost every day or weekly) Sometimes (a few times a month)
 Rarely (a few times a year) Other: _____

b. How do you usually get to Norwalk Park? Check all that are applicable.

Walking Bicycle
 Driving Bus/public transportation
 Other: _____

c. What do you do there? Check all that are applicable.

Play sports Exercise Swim
 Socialize Picnic Arts & crafts
 Visit playground Other: _____

d. What time of day do you usually visit? Check all that are applicable.

Morning Afternoon
 Evening/Night Other:

If No....

e. Why do you not visit Norwalk Park?

Unsafe Too far No Time
 Other: _____

2. What types of programs do you participate in?

Youth sports Adult sports
 Senior Citizen activities Educational classes
 Exercise/aerobics classes Aquatic Activities
 Arts and cultural activities Tutoring or homework assistance

3. What would you like to see more of at or around Norwalk Park?

Facilities:

- | | | |
|--|--|--|
| <input type="checkbox"/> Bicycle paths/lanes | <input type="checkbox"/> Walking Paths | <input type="checkbox"/> Exercise facilities |
| <input type="checkbox"/> Community Garden | <input type="checkbox"/> Nature center | <input type="checkbox"/> Aquatic Center |
| <input type="checkbox"/> Other: _____ | | |

Programs:

- | | |
|---|--|
| <input type="checkbox"/> Youth sports | <input type="checkbox"/> Tutoring or homework assistance |
| <input type="checkbox"/> Adult Sports | <input type="checkbox"/> Exercise/aerobics classes |
| <input type="checkbox"/> Senior Citizen activities | <input type="checkbox"/> Educational classes |
| <input type="checkbox"/> Arts and cultural activities | <input type="checkbox"/> Aquatic Activities |
| <input type="checkbox"/> Other: _____ | |

YOUR CONCERNS & OPINIONS

4. What do you like and/or dislike about Norwalk Park? _____

5. What are the top 3 issues concerning Norwalk Park?
1. _____
2. _____
3. _____

6. Please rate how safe you feel at Norwalk Park:
 Excellent Good Fair Poor
What would improve safety at Norwalk Park? _____

7. Do you feel safe **getting to** Norwalk Park? Yes No
If no, what improvements would make getting to Norwalk Park safer?
 Bicycle lanes or path More street lighting
 Improved street crossings Wider sidewalks or a walking path
 Other: _____



THANK YOU!

Your survey helps the City of Norwalk develop a new plan for Norwalk Park.

Learn more and attend upcoming community meetings visit:

www.norwalkca.gov

Norwalk Park

Summary of Self-Administered Questionnaires

8/18/2014

Contents

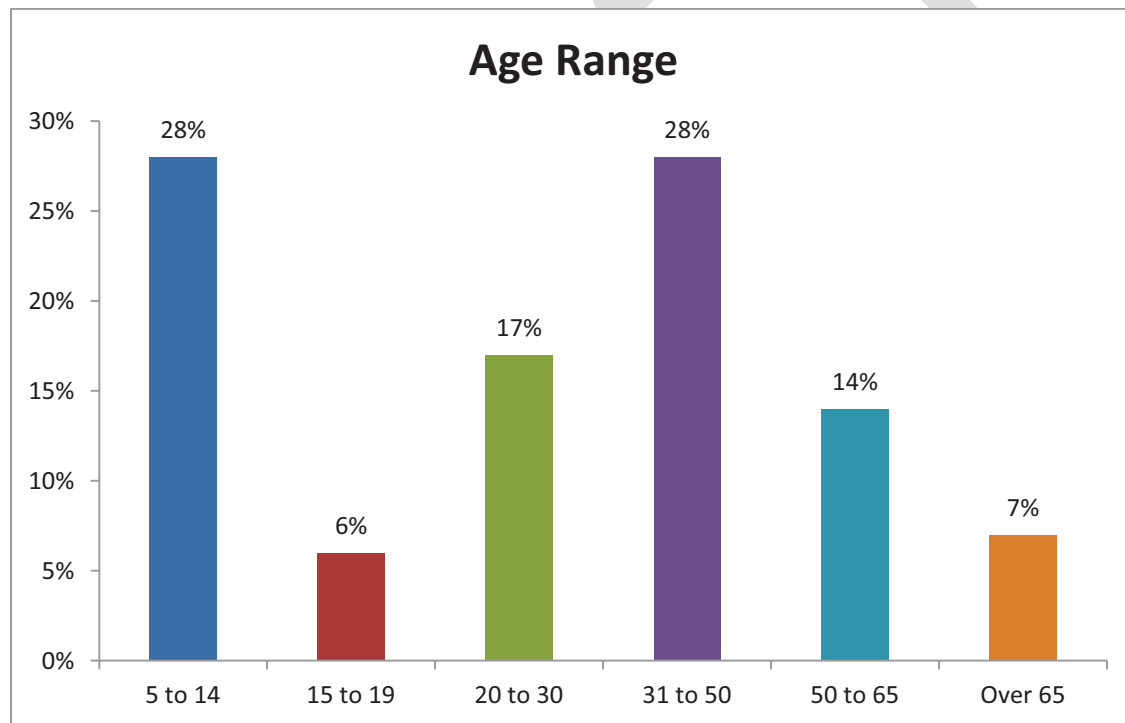
Background	2
Population Characteristics	2
How often do you visit?	2
How do you usually get to the park?	3
What do you do there?	3
What time of day do you usually visit?	4
Why do you not visit Norwalk Park?.....	4
What types of programs do you participate in?	5
What would you like to see more of at or around Norwalk Park – Facilities?	5
What would like to see more of at Norwalk Park - Programs?	6
What do like and/or dislike about Norwalk Park?	Error! Bookmark not defined.
What are the top 3 issues concerning Norwalk Park?.....	7
Please rate how you feel about Norwalk Park?	7
What would improve safety at Norwalk Park?	7
Do you feel safe getting to Norwalk Park?	7
If no, what improvements would make getting to Norwalk Park safer?	7

Background

From April 19, 2014 to August 1, 2014 a total of 413 individuals completed a Norwalk Park self-administered questionnaire. Five individuals completed the questionnaires on-line, while the rest of the questionnaires were completed in-person. The majority of the questionnaires were completed at the City of Norwalk Easter Egg Hunt, Norwalk Arts and Sports Complex, and the Norwalk Aquatic Center. The questionnaires were administered both in English (82%) and in Spanish (18%), and involved a series closed and open ended questions to better understand the current state of the Park and recommendations for improvements from the community.

Population Characteristics

A total of 342 participants indicated their gender as male (32%) or female (68%). The age groups 5 to 14 and 31 to 50 made up over 50 percent of the total participants.



How often do you visit?

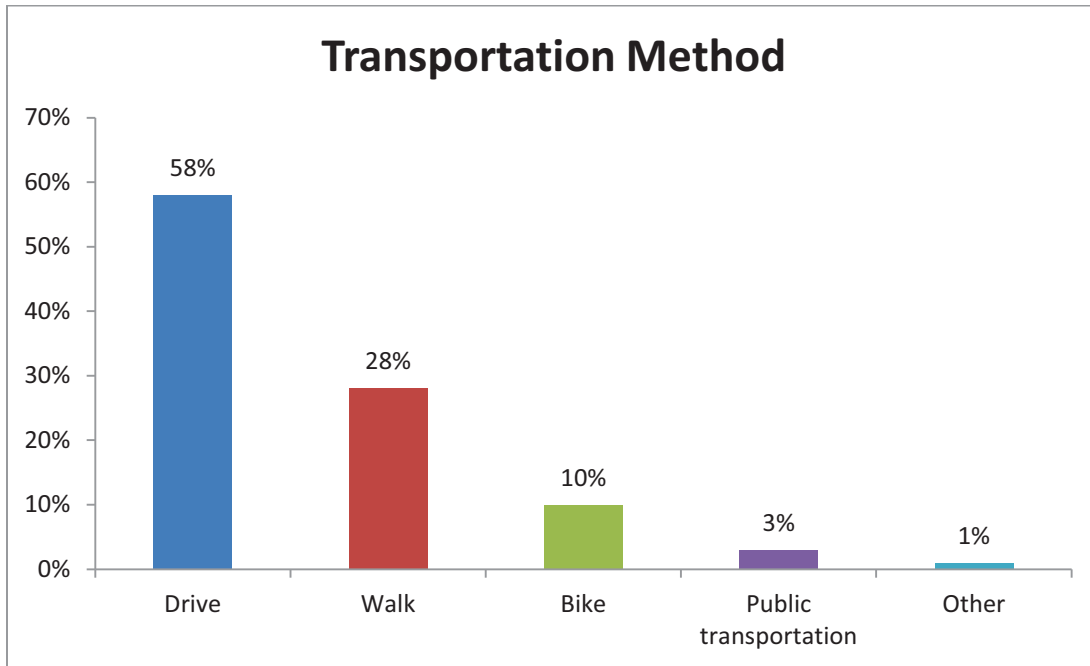
Responses to this question included four different answer choices: Often, Sometimes, Rarely, and Other. Out of a total 388 who responded, the breakdown was as follows:

- Often – 49%
- Sometimes – 33%
- Rarely – 17%

- Other – 1%

How do you usually get to the park?

A total of 507 tallies were answered in this question. Over 50 percent of responses indicated they “drive” and about one quarter “walk” as their means of transportation to the park. Respondents were able to check off multiple answer choices.



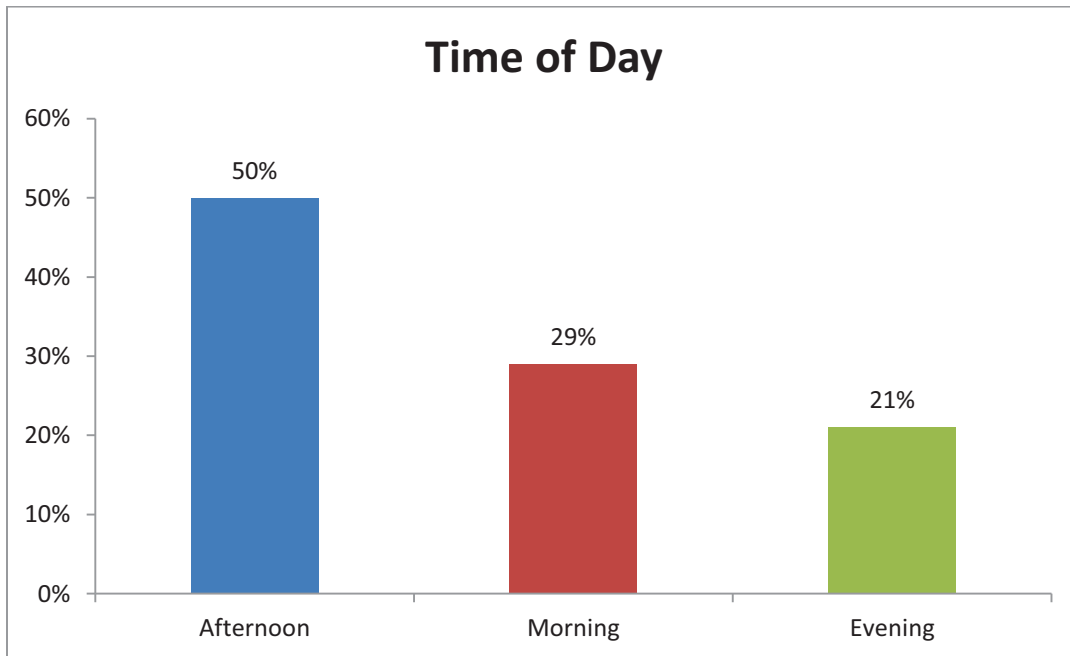
What do you do there?

Respondents indicated as many answer choices that applied. Answer choices included both recreational and social activities. A total of 889 tallies were indicated and the breakdown is as follows:

- Visit playground – 20%
- Play sports – 19%
- Exercise – 17%
- Swim – 12%
- Picnic – 11%
- Socialize – 10%
- Arts and crafts – 7%
- Other – 3%

What time of day do you usually visit?

In screening for the particular time of day most participants go to the park, answer choices included either mornings, afternoons, or evenings. A total of 499 responses were tallied, with 50 percent of participants indicating they go to the park in the “Afternoon.” The remaining 50% were divided by “Morning” or “Evening.”

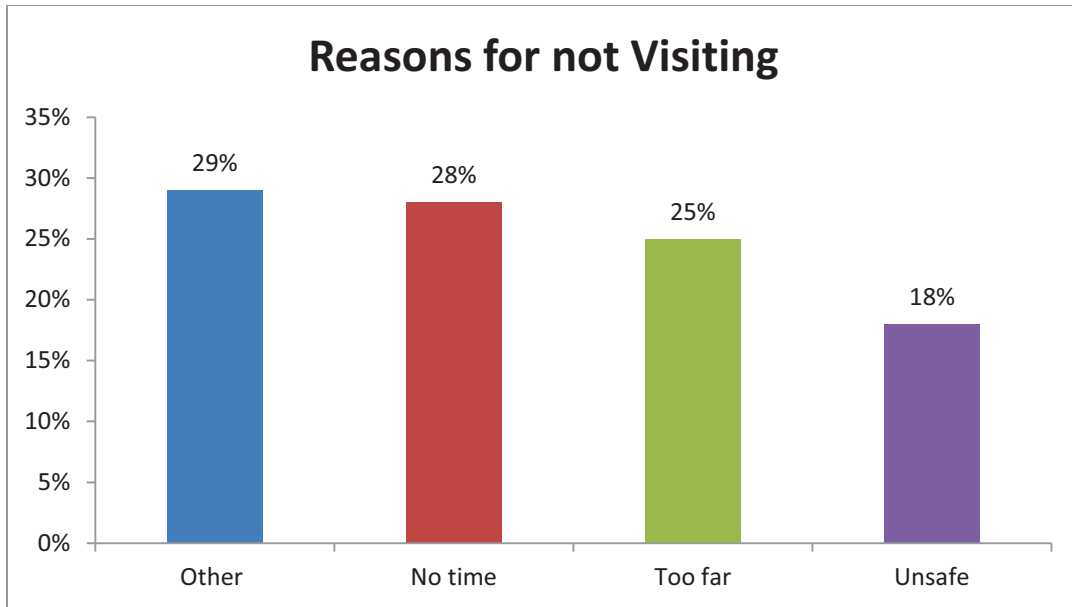


Why do you not visit Norwalk Park?

To better understand the reasons for not visiting Norwalk Park, this question was a follow-up for only those who indicated they do not visit the park. A total of 72 participants responded to this question, with four answer choices – No time, Too far, Unsafe, Other – with all answers being comparable.

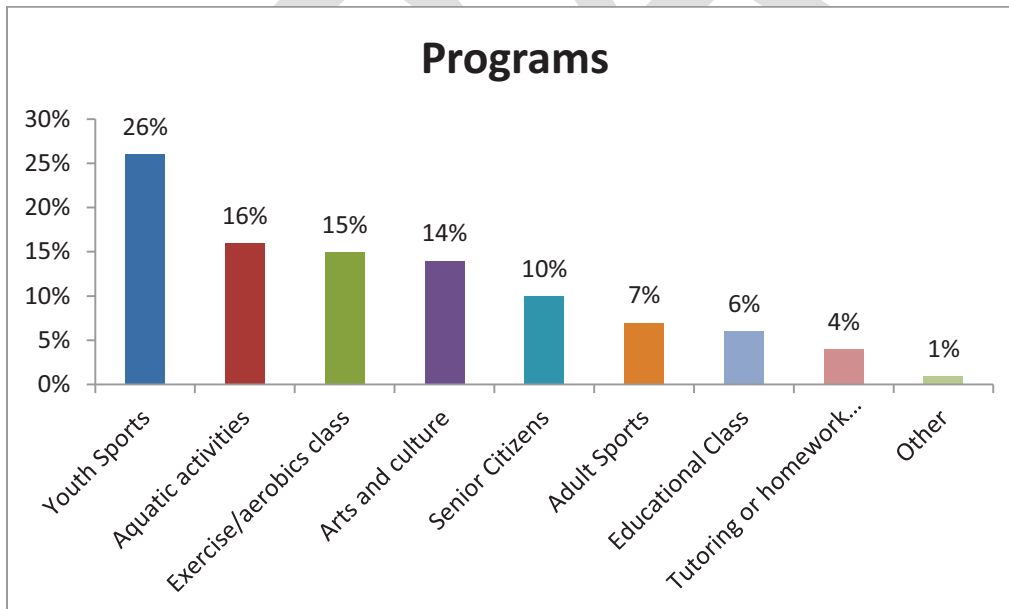
“Other” had the highest response (29%) out of the four answer choices. Here are some of the results:

- Gangs
- Needs a better play ground
- No pets allowed
- Not enough lighting
- Bathrooms are messy
- Illicit drug use



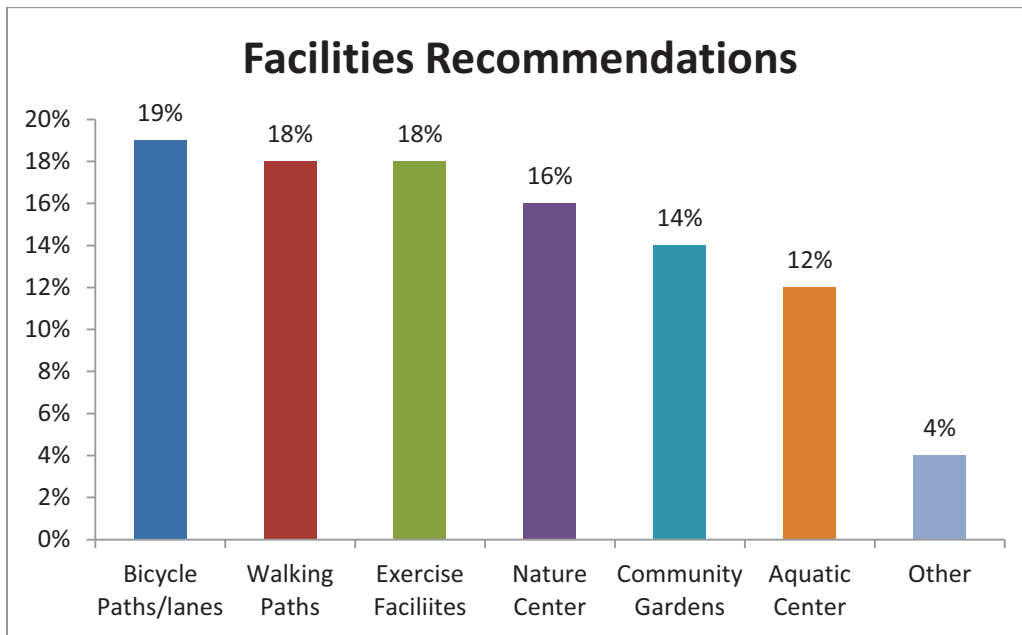
What types of programs do you participate in?

Current programs available extended from sports, social and educational events, focused on youth to senior citizens. There were 560 total responses with one quarter of respondents currently participating in “Youth Sports.”



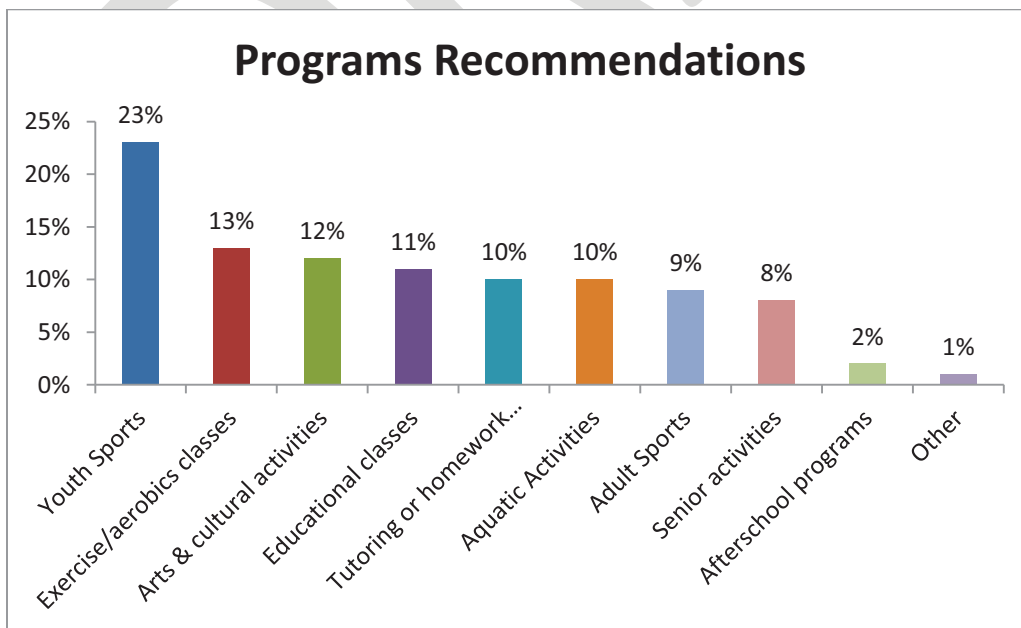
What would you like to see more of at or around Norwalk Park – Facilities?

There were seven answer choices in this question to better understand what participants are interested in as far as physical environment of the park. There were a total of 802 tallied answers, with not much variation among the frequency of responses for each.



What would like to see more of at Norwalk Park - Programs?

Participant responses to programs of interests were consistent with the current programs participation; it included a total of 814 answer responses. That is, the percentage of individuals who want to see more “Youth Sports” was about the same as the percentage of participants who are participating in Youth Sports, 25%.



What are the top 3 issues concerning Norwalk Park?

A total of 201 tallies resulted from this question. The top issues of concern for participants included:

- Safety
- Gangs
- Violence
- Trash
- Smoking
- Illicit drugs
- Sports Complex's hours of operation
- Not enough activities

Please rate how you feel about Norwalk Park?

Rating how participant feel about the park consisted of four answer selection, with only the top choice from participants allowed. A total of 385 participants answered this question. The results are as follows:

- Good – 52%
- Excellent – 25%
- Fair – 20%
- Poor – 2%

What would improve safety at Norwalk Park?

This was an open ended question with a total of 124 tallied answers in the responses. Some of the most frequent responses included:

- More frequent police and security patrols
- Increase lighting within and around the park
- Have the park gated
- Increase activities all year round

Do you feel safe getting to Norwalk Park?

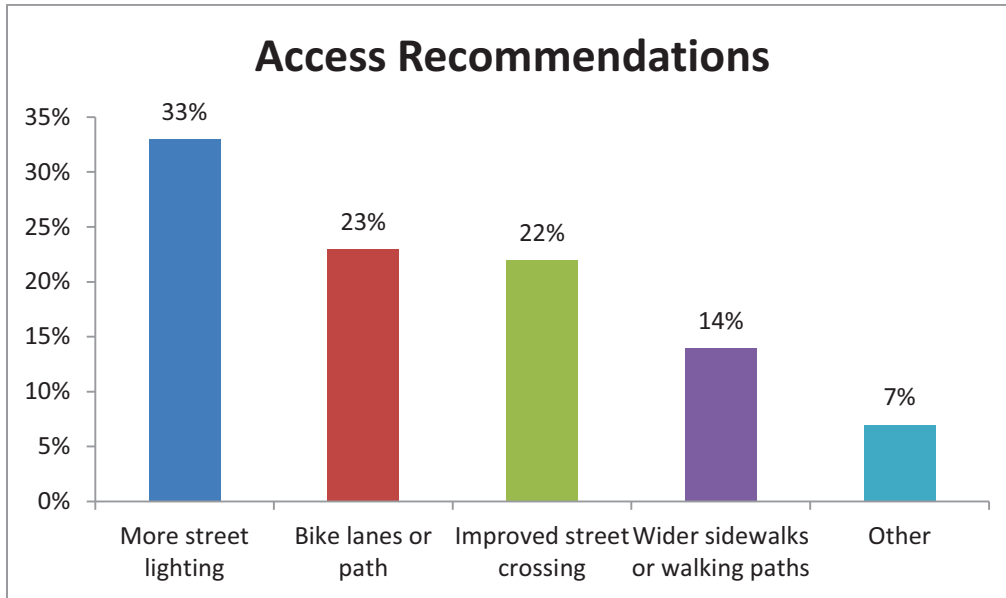
Access to parks based on safety is a concern to consider when planning for and around public spaces. The question allowed for a binary response, either “Yes” or “No.” A total of 357 participants responded with 89% saying they feel safe, while 11% said they did not feel safe.

If no, what improvements would make getting to Norwalk Park safer?

Out of the 265 total tallies to this question, one-third (33%) indicated more lighting as a way to increase safety. Some of the responses for “Other” that stood out include:

- More security/police presence
- Increase lighting within the park

- Monitor gang members' illicit activities



DRAFT



Norwalk Park Master Plan
 CITY OF NORWALK, CALIFORNIA
 Statement of Preliminary Probable Construction Budget
 11/21/2014

A. MAIN PARK (MAZE AREA)

ITEM	DESCRIPTION	QTY	UNIT	UNIT COST	TOTAL
1.	Mobilization	1	LS	Allow	\$17,032.75
2.	Site Demolition / Clear and Grub	29,400	SF	\$ 1.00	\$ 29,400.00
3.	Rough Grading	29,400	SF	\$ 0.50	\$ 14,700.00
4.	Fine Grading / Soil Preparation	29,400	SF	\$ 0.35	\$ 10,290.00
5.	Site Drainage	29,400	SF	\$ 0.50	\$ 14,700.00
6.	Planting-Shrubs	7,100	SF	\$ 3.00	\$ 21,300.00
7.	Planting-Turf(Hydroseed)	10,200	SF	\$ 0.15	\$ 1,530.00
8.	Irrigation-Shrubs	7,100	SF	\$ 2.50	\$ 17,750.00
9.	Irrigation-Turf	10,200	SF	\$ 2.00	\$ 20,400.00
10.	Wood Mulch	7,100	SF	\$ 0.35	\$ 2,485.00
11.	D.G. Maze to include concrete curbs	5,900	SF	\$ 10.00	\$ 59,000.00
12.	Trees- 24" Box	13	EA	\$ 300.00	\$ 3,900.00
13.	Light Fixtures	8	EA	\$ 6,500.00	\$ 52,000.00
14.	Site electrical- conduit, wiring and distribution	1	Allow	\$ 25,000.00	\$ 25,000.00
15.	Sidewalks	5,900	SF	\$ 8.00	\$ 47,200.00
16.	Exercise Station- DG pad and Equipment	2	EA	\$ 8,000.00	\$ 16,000.00
17.	Site Furniture	1	Allow	\$ 5,000.00	\$ 5,000.00
SUBTOTAL					\$ 357,687.75
15% CONTINGENCY					\$ 53,653.16
SITE WORK (MAZE AREA) TOTAL					\$ 411,340.91

B. MAIN PARK (NATURE CENTER AREA)

ITEM	DESCRIPTION	QTY	UNIT	UNIT COST	TOTAL
1.	Mobilization	1	LS	Allow	\$26,145.50
2.	Site Demolition / Clear and Grub	24,400	SF	\$ 1.00	\$ 24,400.00
3.	Rough Grading	24,400	SF	\$ 0.50	\$ 12,200.00
4.	Fine Grading / Soil Preparation	24,400	SF	\$ 0.35	\$ 8,540.00
5.	Site Drainage	24,400	SF	\$ 0.50	\$ 12,200.00
6.	Planting-Shrubs	8,200	SF	\$ 3.00	\$ 24,600.00
7.	Irrigation-Shrubs	8,200	SF	\$ 2.50	\$ 20,500.00
8.	Wood Mulch	8,200	SF	\$ 0.35	\$ 2,870.00
9.	Trees- 24" Box	11	EA	\$ 300.00	\$ 3,300.00
10.	Light Fixtures	4	EA	\$ 6,500.00	\$ 26,000.00
11.	Site electrical- conduit, wiring and distribution	1	Allow	\$ 12,500.00	\$ 12,500.00
12.	Sidewalks	2,600	SF	\$ 8.00	\$ 20,800.00
13.	Maintenance Access Road	9,000	SF	\$ 3.00	\$ 27,000.00
14.	Site Furniture	1	Allow	\$ 8,000.00	\$ 8,000.00
15.	Animal Pens- DG and Fencing	8	EA	\$ 5,000.00	\$ 40,000.00
16.	Nature Center Building	800	SF	\$ 350.00	\$ 280,000.00
SUBTOTAL					\$ 549,055.50
15% CONTINGENCY					\$ 82,358.33
SITE WORK (NATURE CENTER AREA) TOTAL					\$ 631,413.83

C. MAIN PARK (OPEN PLAY AREA)

ITEM	DESCRIPTION	QTY	UNIT	UNIT COST	TOTAL
1.	Mobilization	1	LS	Allow	\$49,644.88
2.	Site Demolition / Clear and Grub	56,550	SF	\$ 1.00	\$ 56,550.00
3.	Rough Grading	56,550	SF	\$ 0.50	\$ 28,275.00
4.	Fine Grading and Soil Preparation	56,550	SF	\$ 0.35	\$ 19,792.50
5.	Site Drainage	56,550	SF	\$ 0.50	\$ 28,275.00
6.	Planting-Turf(Hydroseed)	50,700	SF	\$ 0.15	\$ 7,605.00
7.	Irrigation-Turf	50,700	SF	\$ 2.00	\$ 101,400.00
8.	Trees- 24" Box	3	EA	\$ 300.00	\$ 900.00
9.	Light Fixtures	5	EA	\$ 6,500.00	\$ 32,500.00
10.	Site electrical- conduit, wiring and distribution	1	Allow	\$ 15,600.00	\$ 15,600.00
11.	Sidewalks	4,500	SF	\$ 8.00	\$ 36,000.00
12.	Exercise Station- DG pad and Equipment	2	EA	\$ 8,000.00	\$ 16,000.00
13.	Site Furniture	1	Allow	\$ 20,000.00	\$ 20,000.00
14.	Picnic Shelter	3	EA	\$ 60,000.00	\$ 180,000.00
15.	Utilites- Water, Sewer and Electrical	1	LS	Allow	\$ 100,000.00
16.	Restroom	1	EA	\$ 350,000.00	\$ 350,000.00
SUBTOTAL					\$ 1,042,542.38
15% CONTINGENCY					\$ 156,381.36
SITE WORK (OPEN PLAY AREA) TOTAL					\$ 1,198,923.73

D. MAIN PARK (PICNIC AREA)

ITEM	DESCRIPTION	QTY	UNIT	UNIT COST	TOTAL
1.	Mobilization	1	LS	Allow	\$23,671.45
2.	Site Demolition / Clear and Grub	34,340	SF	\$ 1.00	\$ 34,340.00
3.	Rough Grading	34,340	SF	\$ 0.50	\$ 17,170.00
4.	Fine Grading / Soil Preparation	34,340	SF	\$ 0.35	\$ 12,019.00
5.	Site Drainage	34,340	SF	\$ 0.50	\$ 17,170.00
6.	Planting-Shrubs	8,300	SF	\$ 3.00	\$ 24,900.00
7.	Planting-Turf(Hydroseed)	14,500	SF	\$ 0.15	\$ 2,175.00
8.	Irrigation-Shrubs	8,300	SF	\$ 2.50	\$ 20,750.00
9.	Irrigation-Turf	14,500	SF	\$ 2.00	\$ 29,000.00
10.	Wood Mulch	8,300	SF	\$ 0.35	\$ 2,905.00
11.	Bioswale	3,200	SF	\$ 6.00	\$ 19,200.00
12.	Trees- 24" Box	8	EA	\$ 300.00	\$ 2,400.00
13.	Light Fixtures	3	EA	\$ 6,500.00	\$ 19,500.00
14.	Site electrical- conduit, wiring and distribution	1	Allow	\$ 9,500.00	\$ 9,500.00
15.	Sidewalks	6,800	SF	\$ 8.00	\$ 54,400.00
16.	Exercise Station- DG pad and Equipment	1	EA	\$ 8,000.00	\$ 8,000.00
17.	Site Furniture	1	Allow	\$ 20,000.00	\$ 20,000.00
18.	Picnic Shelter	3	EA	\$ 60,000.00	\$ 180,000.00
SUBTOTAL					\$ 497,100.45
15% CONTINGENCY					\$ 74,565.07
SITE WORK (PICNIC AREA) TOTAL					\$ 571,665.52

E. MAIN PARK (VOLLEYBALL AREA)

ITEM	DESCRIPTION	QTY	UNIT	UNIT COST	TOTAL
1.	Mobilization	1	LS	Allow	\$19,312.88
2.	Site Demolition / Clear and Grub	31,650	SF	\$ 1.00	\$ 31,650.00
3.	Rough Grading	31,650	SF	\$ 0.50	\$ 15,825.00
4.	Fine Grading / Soil Preparation	31,650	SF	\$ 0.35	\$ 11,077.50
5.	Site Drainage	31,650	SF	\$ 0.50	\$ 15,825.00
6.	Planting-Shrubs	4,800	SF	\$ 3.00	\$ 14,400.00
7.	Planting-Turf(Hydroseed)	20,000	SF	\$ 0.15	\$ 3,000.00
8.	Irrigation-Shrubs	4,800	SF	\$ 2.50	\$ 12,000.00
9.	Irrigation-Turf	20,000	SF	\$ 2.00	\$ 40,000.00
10.	Wood Mulch	4,800	SF	\$ 0.35	\$ 1,680.00
11.	Bioswale	900	SF	\$ 6.00	\$ 5,400.00
12.	Trees- 24" Box	3	EA	\$ 300.00	\$ 900.00
13.	Light Fixtures	4	EA	\$ 6,500.00	\$ 26,000.00
14.	Site electrical- conduit, wiring and distribution	1	Allow	\$ 12,500.00	\$ 12,500.00
15.	Sidewalks	4,000	SF	\$ 8.00	\$ 32,000.00
16.	Exercise Station- DG pad and Equipment	2	EA	\$ 8,000.00	\$ 16,000.00
17.	Site Furniture	1	Allow	\$ 8,000.00	\$ 8,000.00
18.	Picnic Shelter	1	EA	\$ 60,000.00	\$ 60,000.00
19.	Gazebo	1	EA	\$ 80,000.00	\$ 80,000.00
SUBTOTAL					\$ 405,570.38
15% CONTINGENCY					\$ 60,835.56
SITE WORK (VOLLEYBALL AREA) TOTAL					\$ 466,405.93

F. MAIN PARK (SOCCER AREA)

ITEM	DESCRIPTION	QTY	UNIT	UNIT COST	TOTAL
1.	Mobilization	1	LS	Allow	\$27,392.20
2.	Site Demolition / Clear and Grub	73,740	SF	\$ 1.00	\$ 73,740.00
3.	Rough Grading	73,740	SF	\$ 0.50	\$ 36,870.00
4.	Fine Grading / Soil Preparation	73,740	SF	\$ 0.35	\$ 25,809.00
5.	Site Drainage	73,740	SF	\$ 0.50	\$ 36,870.00
6.	Planting-Shrubs	5,300	SF	\$ 3.00	\$ 15,900.00
7.	Planting-Turf(Hydroseed)	59,000	SF	\$ 0.15	\$ 8,850.00
8.	Irrigation-Shrubs	5,300	SF	\$ 2.50	\$ 13,250.00
9.	Irrigation-Turf	59,000	SF	\$ 2.00	\$ 118,000.00
10.	Wood Mulch	5,300	SF	\$ 0.35	\$ 1,855.00
11.	Bioswale	3,000	SF	\$ 6.00	\$ 18,000.00
12.	Trees- 24" Box	4	EA	\$ 300.00	\$ 1,200.00
13.	Light Fixtures	7	EA	\$ 6,500.00	\$ 45,500.00
14.	Site electrical- conduit, wiring and distribution	1	Allow	\$ 22,000.00	\$ 22,000.00
15.	Sidewalks	5,500	SF	\$ 8.00	\$ 44,000.00
16.	Exercise Station- DG pad and Equipment	2	EA	\$ 8,000.00	\$ 16,000.00
17.	Site Furniture	1	Allow	\$ 10,000.00	\$ 10,000.00
18.	Picnic Shelter	1	EA	\$ 60,000.00	\$ 60,000.00
SUBTOTAL					\$ 575,236.20
15% CONTINGENCY					\$ 86,285.43
SITE WORK (SOCCER AREA) TOTAL					\$ 661,521.63

G. MAIN PARK (TOTLOT AREA)

ITEM	DESCRIPTION	QTY	UNIT	UNIT COST	TOTAL
1.	Mobilization	1	LS	Allow	\$33,226.25
2.	Site Demolition / Clear and Grub	20,000	SF	\$ 1.00	\$ 20,000.00
3.	Rough Grading	20,000	SF	\$ 0.50	\$ 10,000.00
4.	Fine Grading / Soil Preparation	20,000	SF	\$ 0.35	\$ 7,000.00
5.	Site Drainage	20,000	SF	\$ 0.50	\$ 10,000.00
6.	Planting-Shrubs	2,500	SF	\$ 3.00	\$ 7,500.00
7.	Irrigation-Shrubs	2,500	SF	\$ 2.50	\$ 6,250.00
8.	Wood Mulch	2,500	SF	\$ 0.35	\$ 875.00
9.	Trees- 24" Box	3	EA	\$ 300.00	\$ 900.00
10.	Light Fixtures	1	EA	\$ 6,500.00	\$ 6,500.00
11.	Site electrical- conduit, wiring and distribution	1	Allow	\$ 3,500.00	\$ 3,500.00
12.	Sidewalks	3,000	SF	\$ 8.00	\$ 24,000.00
13.	Resilient Surfacing Expansion	10,000	SF	\$ 30.00	\$ 300,000.00
14.	New Play Equipment Expansion	1	LS	Allow	\$ 250,000.00
15.	Site Furniture	1	Allow	\$ 10,000.00	\$ 10,000.00
16.	Exercise Station- DG pad and Equipment	1	EA	\$ 8,000.00	\$ 8,000.00
SUBTOTAL					\$ 697,751.25
15% CONTINGENCY					\$ 104,662.69
SITE WORK (TOTLOT AREA) TOTAL					\$ 802,413.94

H. MAIN PARK (SKATE PARK AREA)

ITEM	DESCRIPTION	QTY	UNIT	UNIT COST	TOTAL
1.	Mobilization	1	LS	Allow	\$23,508.13
2.	Site Demolition / Clear and Grub	17,000	SF	\$ 1.00	\$ 17,000.00
3.	Rough Grading	17,000	SF	\$ 0.50	\$ 8,500.00
4.	Fine Grading / Soil Preparation	17,000	SF	\$ 0.35	\$ 5,950.00
5.	Site Drainage	17,000	SF	\$ 0.50	\$ 8,500.00
6.	Planting-Shrubs	2,250	SF	\$ 3.00	\$ 6,750.00
7.	Irrigation-Shrubs	2,250	SF	\$ 2.50	\$ 5,625.00
8.	Wood Mulch	2,250	SF	\$ 0.35	\$ 787.50
9.	Trees- 24" Box	6	EA	\$ 300.00	\$ 1,800.00
10.	Light Fixtures	4	EA	\$ 6,500.00	\$ 26,000.00
11.	Site electrical- conduit, wiring and distribution	1	Allow	\$ 12,500.00	\$ 12,500.00
12.	Site Furniture	1	Allow	\$ 8,000.00	\$ 8,000.00
13.	Skate Park	14,750	SF	\$ 25.00	\$ 368,750.00
SUBTOTAL					\$ 493,670.63
15% CONTINGENCY					\$ 74,050.59
SITE WORK (SKATE PARK AREA) TOTAL					\$ 567,721.22

I. MAIN PARK (GARDENS AREA)

ITEM	DESCRIPTION	QTY	UNIT	UNIT COST	TOTAL
1.	Mobilization	1	LS	Allow	\$40,769.25
2.	Site Demolition / Clear and Grub	31,600	SF	\$ 1.00	\$ 31,600.00
3.	Rough Grading	31,600	SF	\$ 0.50	\$ 15,800.00
4.	Fine Grading / Soil Preparation	31,600	SF	\$ 0.35	\$ 11,060.00
5.	Site Drainage	31,600	SF	\$ 0.50	\$ 15,800.00
6.	Planting-Shrubs	14,500	SF	\$ 3.00	\$ 43,500.00
7.	Irrigation-Shrubs	14,500	SF	\$ 2.50	\$ 36,250.00
8.	Wood Mulch	14,500	SF	\$ 0.35	\$ 5,075.00
9.	Bioswale	2,000	SF	\$ 6.00	\$ 12,000.00
10.	Trees- 24" Box	13	EA	\$ 300.00	\$ 3,900.00
11.	Light Fixtures	10	EA	\$ 6,500.00	\$ 65,000.00
12.	Site electrical- conduit, wiring and distribution	1	Allow	\$ 31,000.00	\$ 31,000.00
13.	Sidewalks	11,800	SF	\$ 8.00	\$ 94,400.00
14.	Park Sign	1	Allow	\$ 20,000.00	\$ 20,000.00
15.	Kiosk	1	Allow	\$ 30,000.00	\$ 30,000.00
16.	Site Furniture	1	Allow	\$ 40,000.00	\$ 40,000.00
17.	Picnic Shelter	6	EA	\$ 60,000.00	\$ 360,000.00
SUBTOTAL					\$ 856,154.25
15% CONTINGENCY					\$ 128,423.14
SITE WORK (GARDENS AREA) TOTAL					\$ 984,577.39

J. PARK EXTENSION

ITEM	DESCRIPTION	QTY	UNIT	UNIT COST	TOTAL
1.	Mobilization	1	LS	Allow	\$107,001.25
2.	Site Demolition / Clear and Grub	166,000	SF	\$ 1.00	\$ 166,000.00
3.	Rough Grading	166,000	SF	\$ 0.50	\$ 83,000.00
4.	Fine Grading / Soil Preparation	166,000	SF	\$ 0.35	\$ 58,100.00
5.	Site Drainage	166,000	SF	\$ 0.50	\$ 83,000.00
6.	Planting-Shrubs	121,000	SF	\$ 3.00	\$ 363,000.00
7.	Irrigation-Shrubs	121,000	SF	\$ 2.50	\$ 302,500.00
8.	Wood Mulch	121,000	SF	\$ 0.35	\$ 42,350.00
9.	Bioswale	15,200	SF	\$ 6.00	\$ 91,200.00
10.	Trees- 24" Box	100	EA	\$ 300.00	\$ 30,000.00
11.	Light Fixtures	34	EA	\$ 6,500.00	\$ 221,000.00
12.	Site electrical- conduit, wiring and distribution	1	Allow	\$ 106,000.00	\$ 106,000.00
13.	Vehicular D.G. Path (8' wide)	20,500	SF	\$ 6.00	\$ 123,000.00
14.	Vehicular D.G. Path Edge Restraints	5,125	SF	\$ 15.00	\$ 76,875.00
15.	Pedestrian Foot Bridge	4	EA	\$ 10,000.00	\$ 40,000.00
16.	Exercise Station- DG pad and Equipment	10	EA	\$ 8,000.00	\$ 80,000.00
17.	Site Furniture	1	Allow	\$ 34,000.00	\$ 34,000.00
18.	Picnic Shelter	4	EA	\$ 60,000.00	\$ 240,000.00
SUBTOTAL					\$ 2,247,026.25
15% CONTINGENCY					\$ 337,053.94
SITE WORK (PARK EXTENSION) TOTAL					\$ 2,584,080.19

MAIN PARK TOTAL (ALL 9 AREAS)	\$ 6,295,984.09
PARK EXTENSION TOTAL	\$ 2,584,080.19
GRAND TOTAL	\$ 8,880,064.28

THE ABOVE ESTIMATE DOES NOT INCLUDE FEES FOR PROFESSIONAL DESIGN SERVICES. RJM HAS PREPARED THIS ESTIMATE OF PROBABLE CONSTRUCTION COSTS ON THE BASIS OF ITS BEST PROFESSIONAL JUDGMENT AND EXPERIENCE WITH THE CONSTRUCTION INDUSTRY. THE ESTIMATE, HOWEVER, REPRESENTS ASSUMPTIONS AND OPINIONS OF THE CONSTRUCTION MARKET AND CONTRACTORS' METHODS OF DETERMINING ACTUAL CONSTRUCTION COSTS OVER WHICH RJM HAS NO CONTROL. IF THE OWNER WISHES GREATER ASSURANCE AS TO THE CONSTRUCTION COST, HE SHALL EMPLOY AN INDEPENDENT COST ESTIMATOR.

Excluded Costs:

1. Professional fees, inspections and testing
2. Plan check fees and building permit fees
3. Construction management fees