

Current Status

Cases Reported Today	3,248
Total Cases	1,293,450
Total People Tested	7,292,805
Daily Test Positivity Rate	5.17%
7-Day Daily Average Case Rate	15.7 cases/100,000
Currently Hospitalized	918
Deaths Reported Today	17
Total Deaths	24,675



CDC Indicators and Thresholds for Community Transmission of Covid

INDICATOR	Low transmission	Moderate transmission	Substantial transmission	High transmission	LAC
Case rate in past 7 days	0 – 9.99	10 – 49.99	50 – 99.99	≥ 100	19.8
(Daily case rate approximation)	(0 – 1.49)	(1.5 – 6.99)	(7 – 13.99)	(≥ 14)	15.7
Test positivity	< 5.0%	5.0% – 7.9%	8.0% – 9.9%	≥ 10%	5.17%



Mitigation Efforts with Widespread Transmission

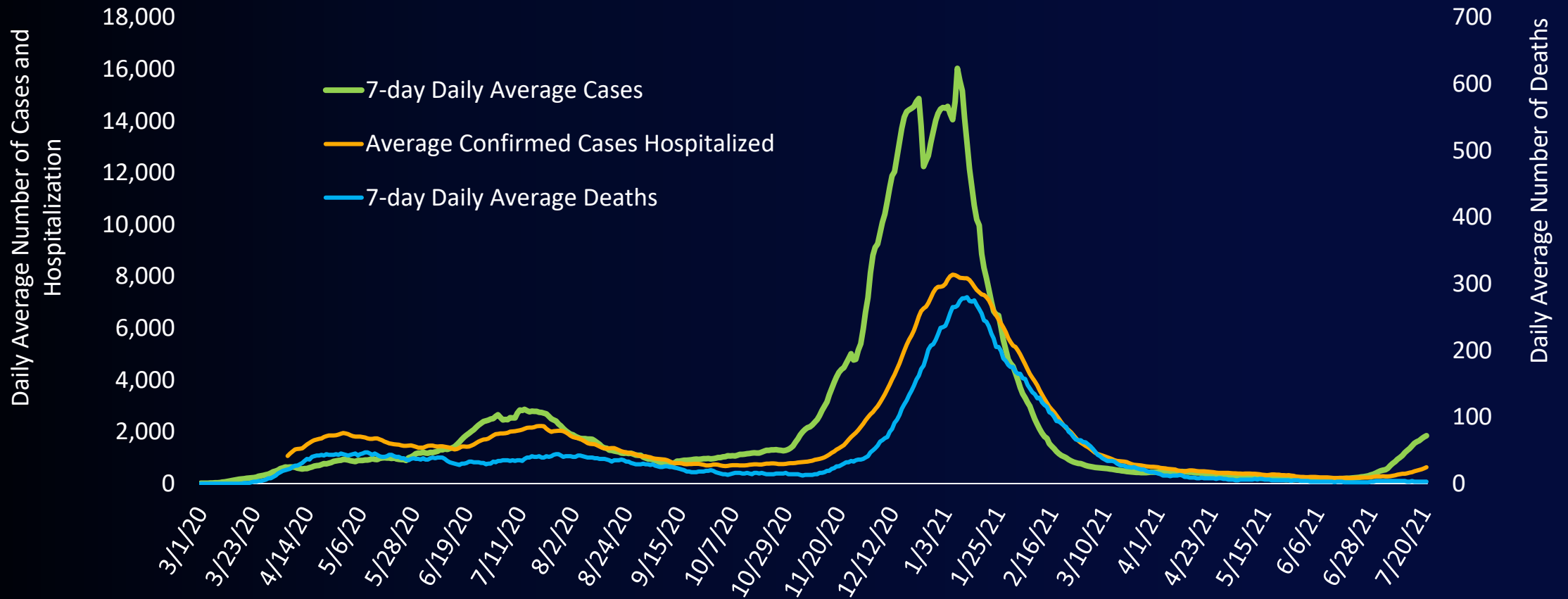
1. Promoting vaccinations
2. Universal indoor masking
3. Testing and contact tracing



covid19.lacounty.gov

7/29/2021

Number of COVID-19 Cases and Hospitalizations by Episode Date and Deaths by Date of Death March 1, 2020 – July 21, 2021



Percentage of Sequenced Specimens That Were Delta Variant by Week of Sequenced Specimen Collection Date, LAC

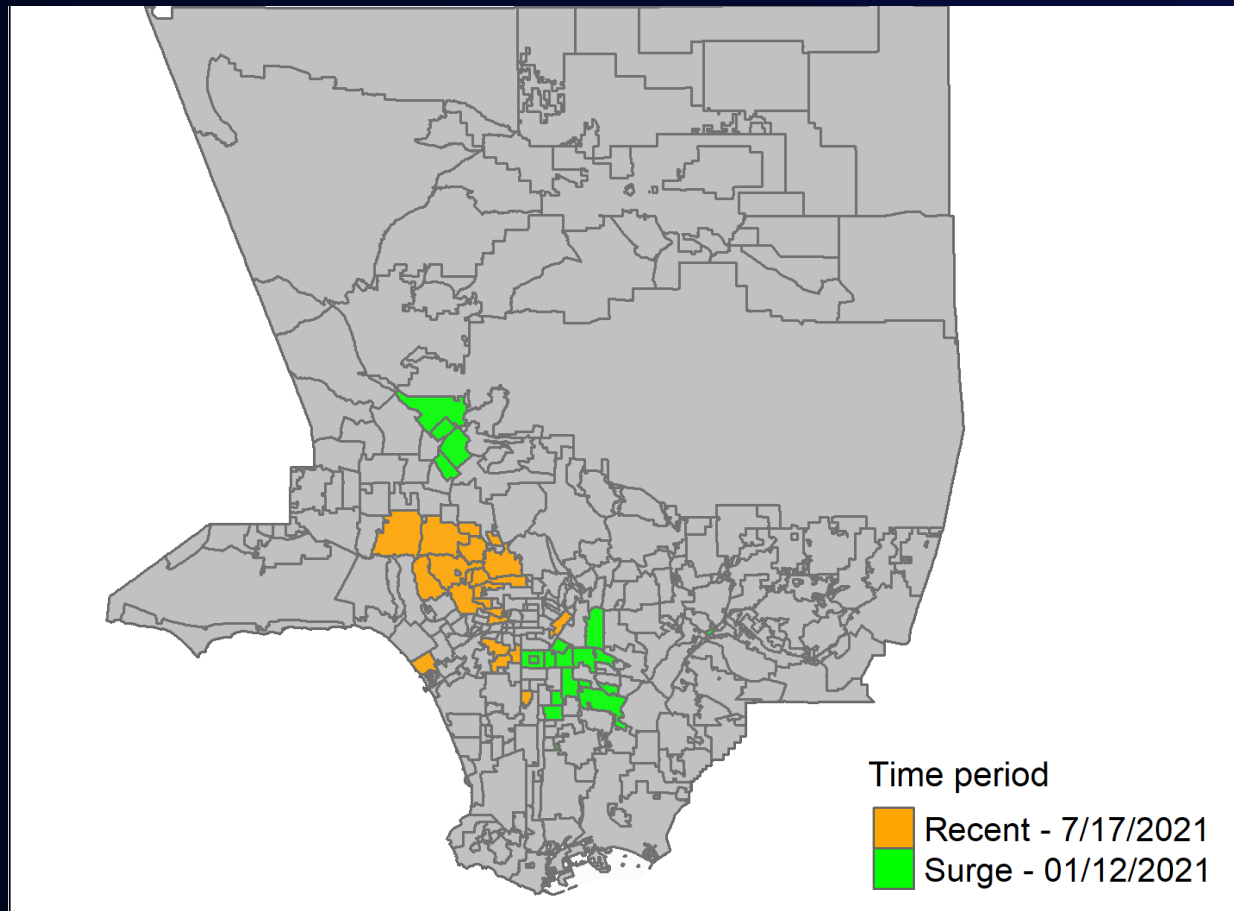


**Age-Adjusted Case, Hospitalization, and Death Rates per 100,000 People
by Race and Ethnicity
Over Two-Week Periods ending June 19 and July 17, 2021**

Race/Ethnicity	Case Incidence Rate		Hospitalization Rate		Death Rate	
	June 19	July 17	June 19	July 17	June 19	July 17
Black	43	↑ 181	10.6	↑ 23.3	0.7	↑ 1.2
Latinx	22	↑ 62	5.3	↑ 9.4	0.6	0.6
White	18	↑ 83	2.9	↑ 7.5	0.3	0.2
Asian	7	↑ 33	1.6	↑ 2.7	0.2	0.2



14-Day Cumulative Age Adjusted Case Rates by City/Community Past and Present



COVID-19 Vaccinations Among LAC Residents 12+ as of July 25, 2021

Total Doses Administered	10,993,004
First Doses	6,095,287
Second Doses	4,897,717
LAC Residents with ≥ 1 Dose	6,132,800
LAC Residents Fully Vaccinated	5,376,972

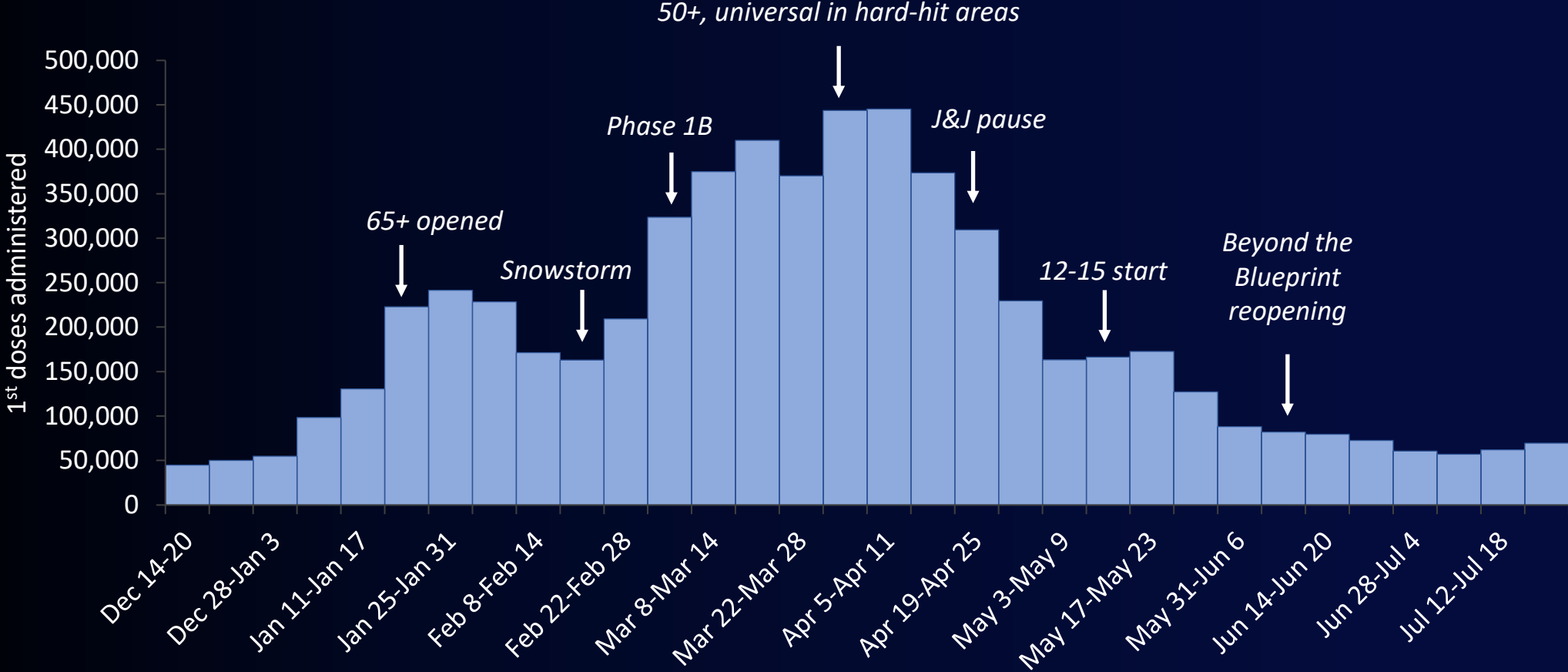


Proportion of LAC Residents with ≥ 1 Dose by Age Group as of July 25, 2021

% LAC Residents 65+	90% (1,216,024)
% LAC Residents 16+	71% (5,902,498)
% LAC Residents 12+	70% (6,132,800)
% LAC Residents 12-17	50% (377,844)
% of 10.3 million LAC residents	60%



First Doses Administered Weekly Among All Eligible Persons



← COVID-19 surge →

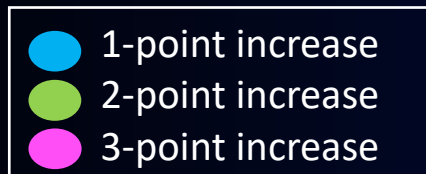


covid19.lacounty.gov

7/29/2021

Where Can We Close Vaccination Gaps?

Percent of LA County Residents With 1 Dose of Vaccine by Age and Race/Ethnicity as of July 25th, 2021



	12-15	16-17	18-29	30-49	50-64	65-79	80+	Total (in 12+s)
Black/African American	24	30	30	41	54	70	62	46%
Latinx	33	46	45	53	68	81	61	55%
American Indian/Alaska Native*	50	57	63	70	60	70	67	65%
White	50	62	60	64	62	84	73	66%
Asian	76	84	78	75	76	85	68	77%
Total	46%	58%	59%	68%	75%	92%	78%	70%

*Likely an overestimate due to inclusion of multiracial people



covid19.lacounty.gov

7/29/2021

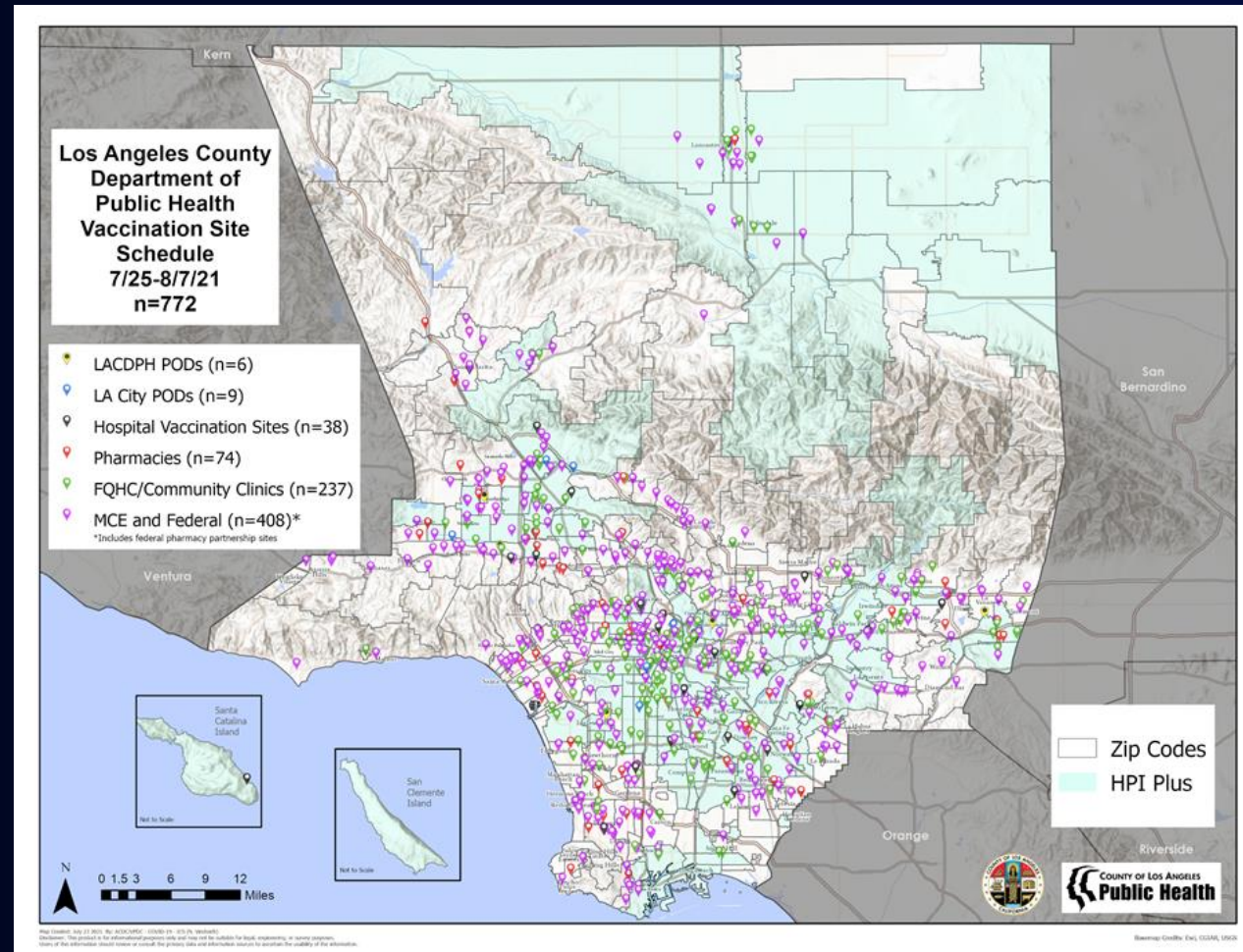
Compliance with Indoor Masking HOO

July 17-23, 2021

Business Sector	# visited	% in compliance with mask requirements
Restaurants	1013	91-94%
Bars	9	78-100%
Food Markets	222	94-97%
Hotel	22	91-100%
Gyms/Fitness Centers	5	20-80%
Hair Salons/Barbershops	11	91-100%
Food Manufacturing Plants	38	82-97%
Personal Care	25	96-100%
Shopping Malls	10	100%



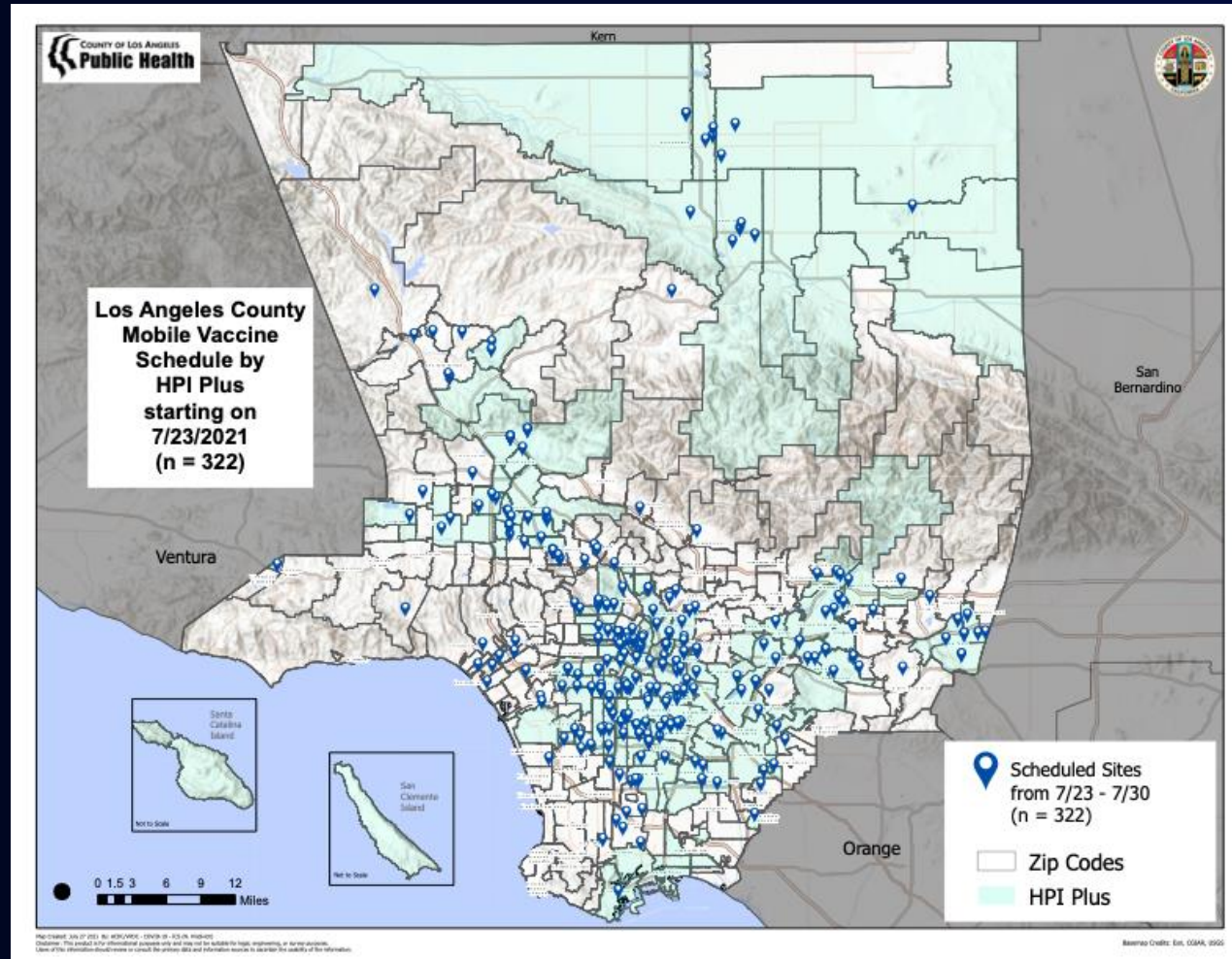
Vaccination Sites in LA County



covid19.lacounty.gov

7/29/2021

Mobile Vaccine Units in LA County

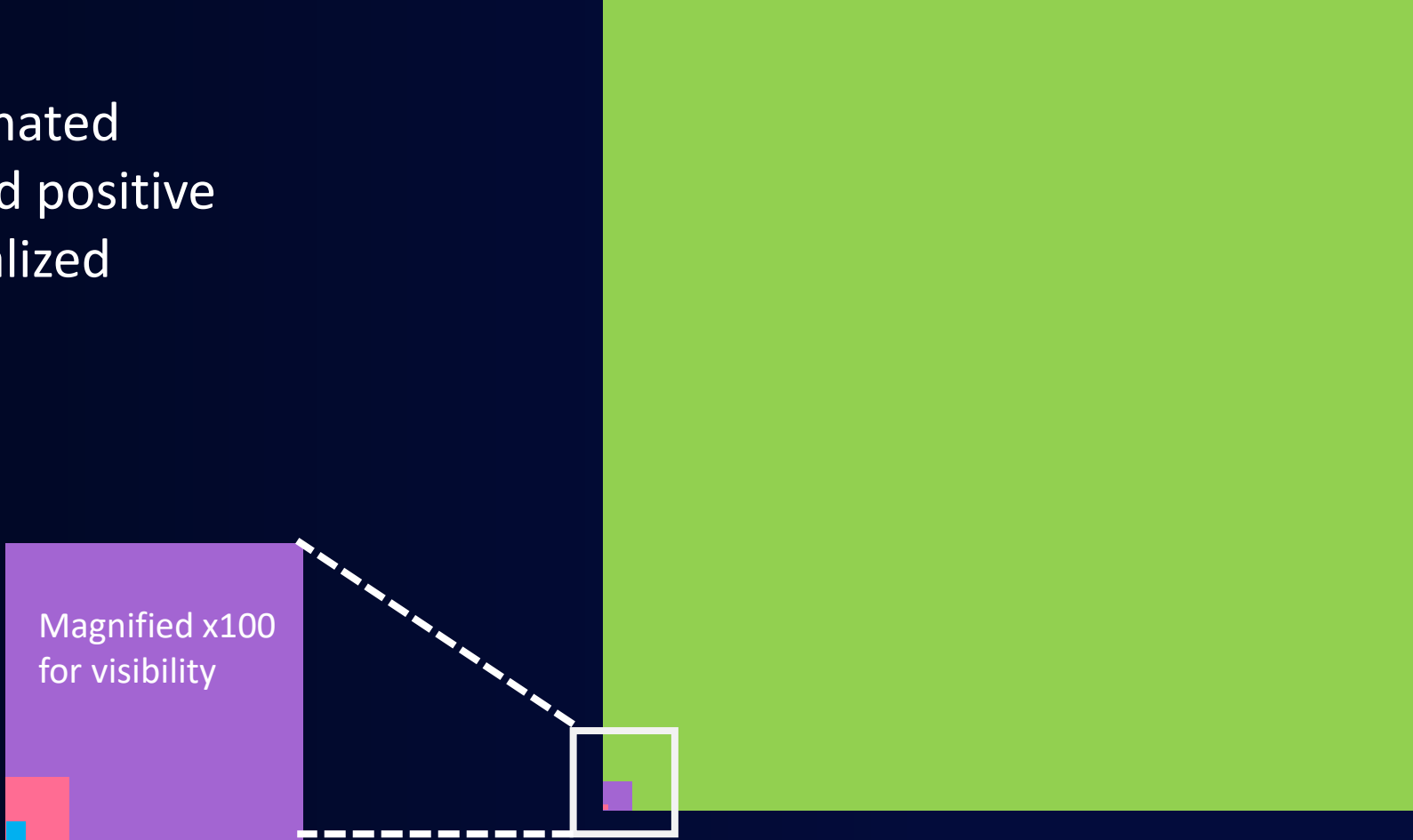


covid19.lacounty.gov

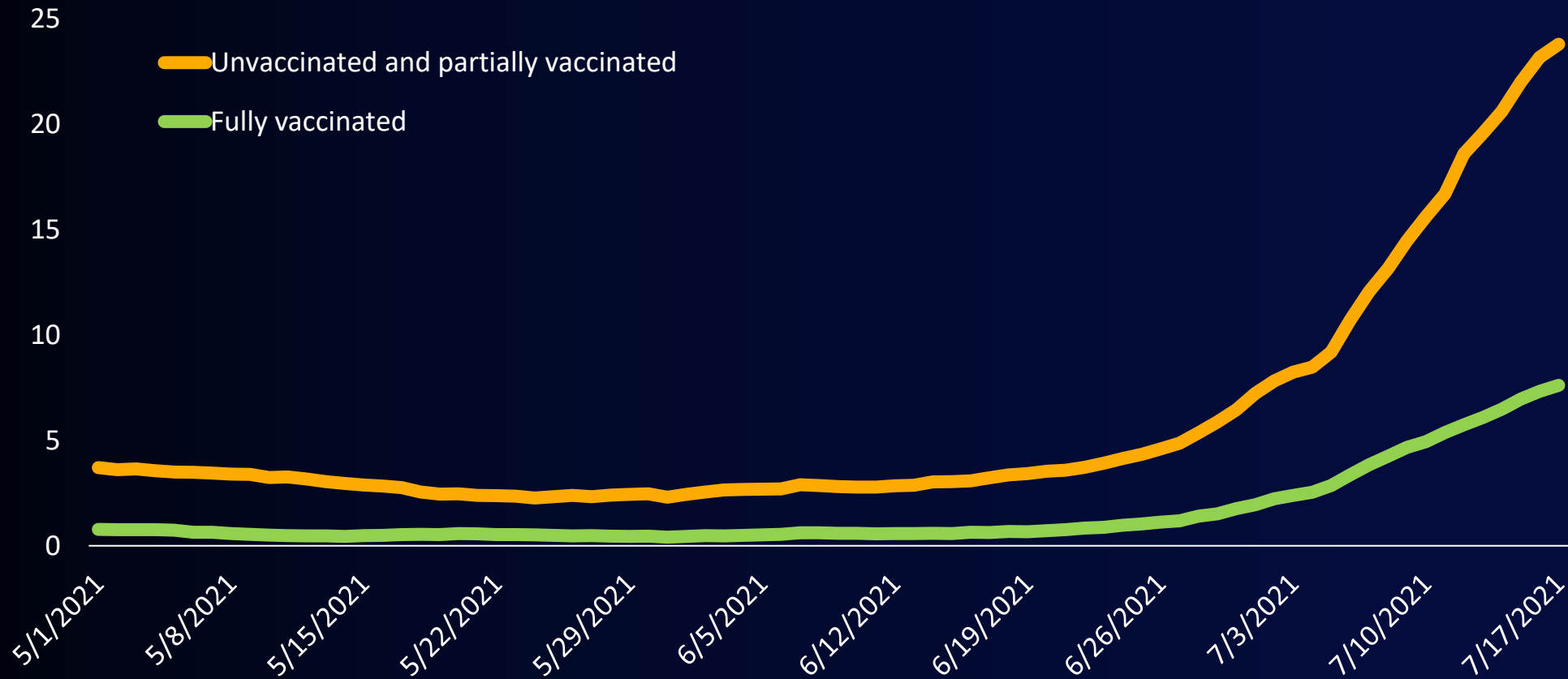
7/29/2021

Covid Among Fully Vaccinated People in LAC As of July 27, 2021

- 4,935,041 fully vaccinated
- 10,656 (0.22%) tested positive
- 410 (0.008%) hospitalized
- 35 (0.0007%) died



Case Rate* per 100,000 for LAC Residents** by Vaccination Status May 1 – July 17, 2021



*Rolling 7-Day average daily crude case rate

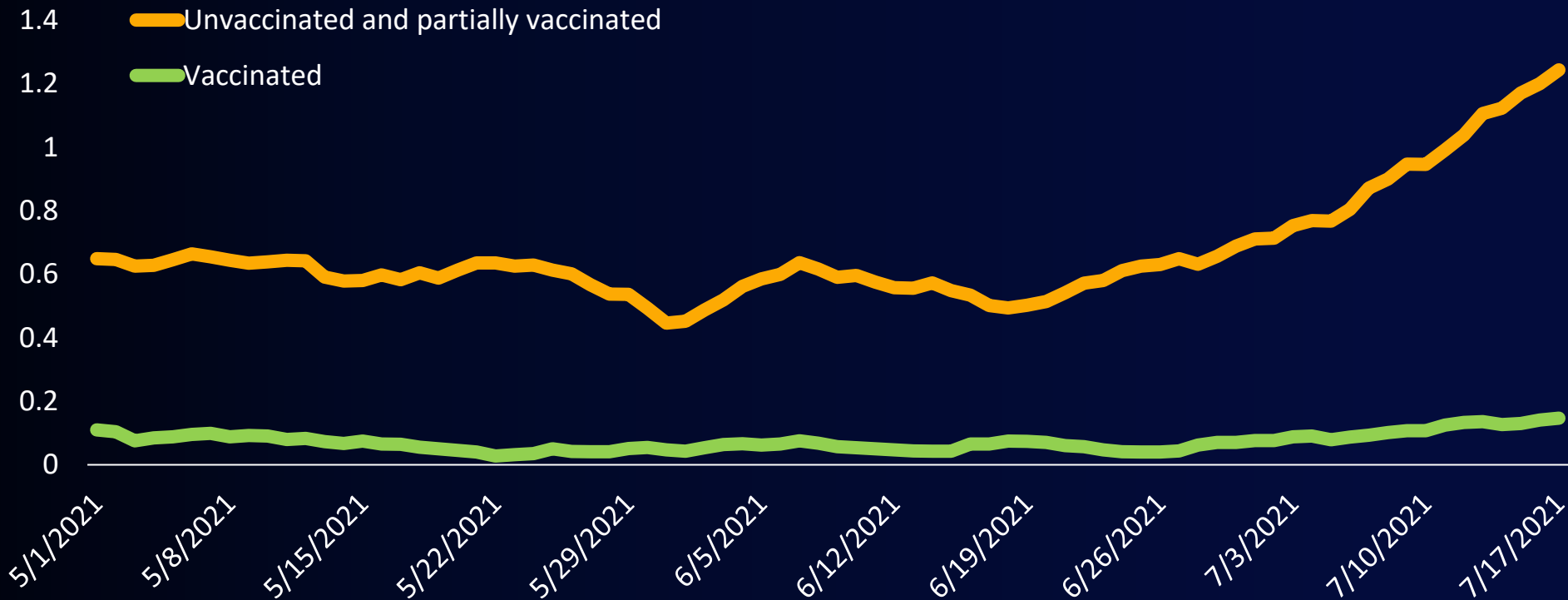
**Excluding Long Beach and Pasadena



covid19.lacounty.gov

7/29/2021

Hospitalization Rate* per 100,000 for LAC Residents** by Vaccination Status May 1 – July 17, 2021



*Rolling 7-Day average daily crude case rate

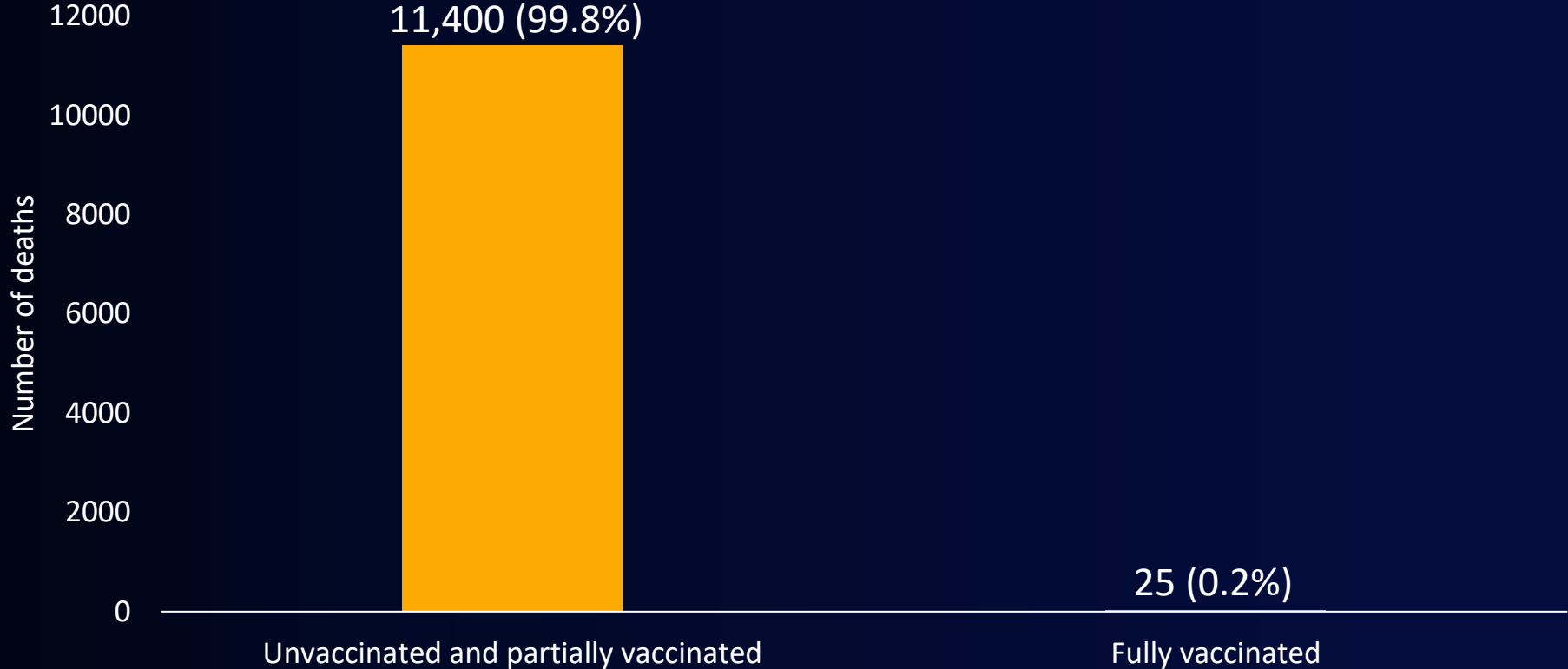
**Excluding Long Beach and Pasadena



covid19.lacounty.gov

7/29/2021

COVID-19 Deaths Among LAC Residents 16+ by Vaccination Status January 1 – June 30, 2021



Worker Protections

	Worker protections before new HOOs	What the new LAC and state HOOs add
Face Coverings	<p>Required for unvaccinated employees indoors or in shared vehicles, with some exceptions</p> <p>Required for everyone on public transit and at indoor youth sites, healthcare facilities, correctional facilities and detention centers, shelters, and at indoors mega events</p>	Required for all employees and customers indoors regardless of vaccination status, with customary exceptions
Vaccine Status Verification	No requirement/self-attestation	Required in health care facilities and high-risk congregate settings (jails, homeless shelters, adult care facilities)
PPE	<p>Employers provide respirators on request to unvaccinated employees indoors/in shared vehicles</p> <p>In outbreaks of ≥ 20 employees, employers must offer respirators to employees for voluntary use</p>	<p>For unvaccinated employees at healthcare facilities and high-risk congregate settings:</p> <ul style="list-style-type: none"> • Employers must provide respirators upon request • Workers must wear surgical masks indoors; respirator use recommended in patient care/access areas
Testing	Only within outbreak settings	<p>Unvaccinated workers must be tested</p> <ul style="list-style-type: none"> • 2x/week (in acute health care hospitals, SNFs and ICFs) • 1x/week in high-risk congregate/all other HC settings



It's Everybody's Job To Protect Workers

- Employers
- Workers
- Customers



covid19.lacounty.gov

7/29/2021