

Past Week Status

	Th 6/16	W 6/15	Tu 6/14	M 6/13	Su 6/12	Sa 6/11	F 6/10
Daily new cases	4,583	5,693	3,310	2,998*	3,583*	6,385	6,202
Daily deaths	9	9	9	7*	4*	6	8
Daily hospitalizations of confirmed cases	605	606	579	593	574	571	616
Daily positivity rate [^] (7-day avg)	8.2%	6.9%	6.2%	5.7%	5.1%	5.1%	5.2%
Daily case rate (7-day avg)	46	46	47	47	49	50	49



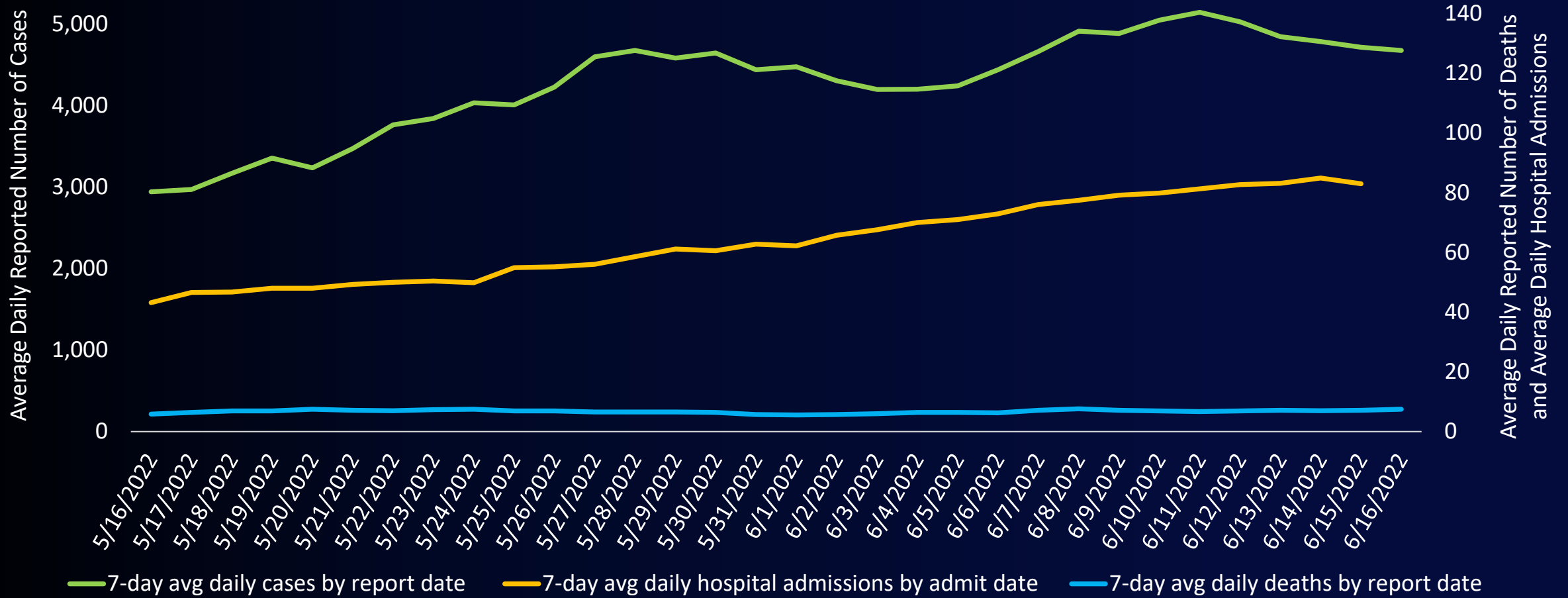
covid19.lacounty.gov

6/16/2022

*Number reflects an undercount due to a lag from weekend reporting.

[^] Daily positivity rates do not include data from Long Beach and Pasadena

7-Day Average Daily COVID-19 Cases and Deaths by Report Date* and Daily Hospital Admissions by Admit Date May 16, 2022 – June 16, 2022



covid19.lacounty.gov

6/16/2022

*Case and death values include data from Long Beach and Pasadena.

CDC COVID-19 Community Levels

New Cases (per 100,000 people in last 7 days)	Indicators	Low	Medium	High	LA County Current Values <u>New Cases:</u> 337/100,000 (as of 6/16/22)
Fewer than 200	New COVID-19 admissions per 100,000 population (7-day total)	<10.0	10.0-19.9	≥20.0	NA
	Proportion of staffed inpatient beds occupied by COVID-19 patients (7-day average)	<10.0%	10.0-14.9%	≥15.0%	NA
200 or more	New COVID-19 admissions per 100,000 population (7-day total)	NA	<10.0	≥10.0	7.3
	Proportion of staffed inpatient beds occupied by COVID-19 patients (7-day average)	NA	<10.0%	≥10.0%	3.5%

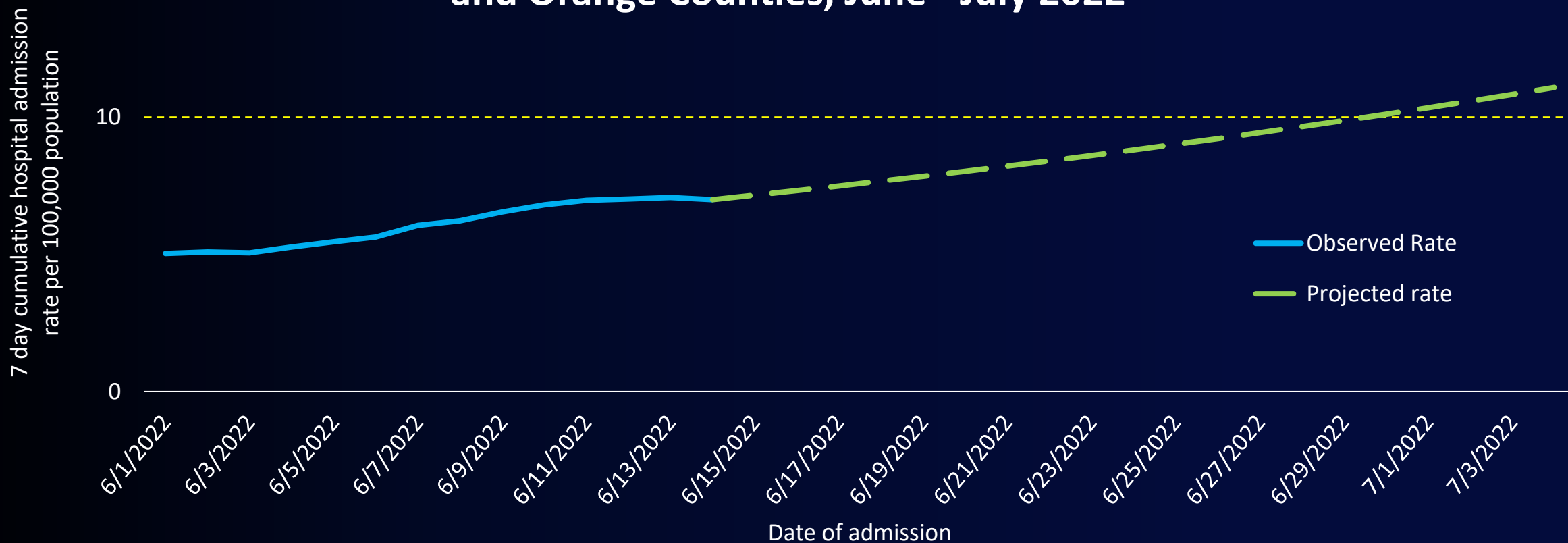
The COVID-19 community level is determined by the higher of the inpatient beds and new admissions indicators, based on the current level of new cases per 100,000 population in the past 7 days.



covid19.lacounty.gov

6/16/2022

7-Day Cumulative Hospital Admission Rate per 100,000 Population by Admission Date, Observed and Projected Values, Los Angeles and Orange Counties, June - July 2022



*Includes cases from Long Beach and Pasadena

**Projection is an estimate only and is based on the rate of change between the 7-day cumulative reported admission counts between June 1 and June 14, 2022. Projections are subject to change.



covid19.lacounty.gov

6/16/2022

LA County Early Alert Signals

Indicator	Thresholds			LA County Current Values
	Low Concern	Medium Concern	High Concern	
Percent of specimens sequenced that are identified as a new variant of concern (including subvariants) <i>(based on WHO designation)</i> ¹	< 10%	10%-20%	> 20%	90%
7-day average percent of Emergency Department encounters classified as coronavirus-related ²	< 5%	5%-10%	> 10%	7%
7-day cumulative crude case rate for the lowest income areas (30-100% area poverty) ²	< 100 per 100,000	100-200 per 100,000	> 200 per 100,000	241 per 100,000
Number of sewer systems with a two-fold or greater increase in wastewater SARS-CoV-2 concentration ³	0	1-2	≥ 3	0
Number of new outbreaks in skilled nursing facilities in past 7 days ⁴	≤ 10	11-20	> 20	26
Number of new outbreaks in TK-12 school classrooms in past 7 days	≤ 7	8-14	≥ 15	N/A
Number of new outbreaks in PEH settings in past 7 days ⁴	≤ 10	11-20	> 20	13
Number of worksite cluster reports in past 7 days ⁴	< 100	100-300	> 300	225



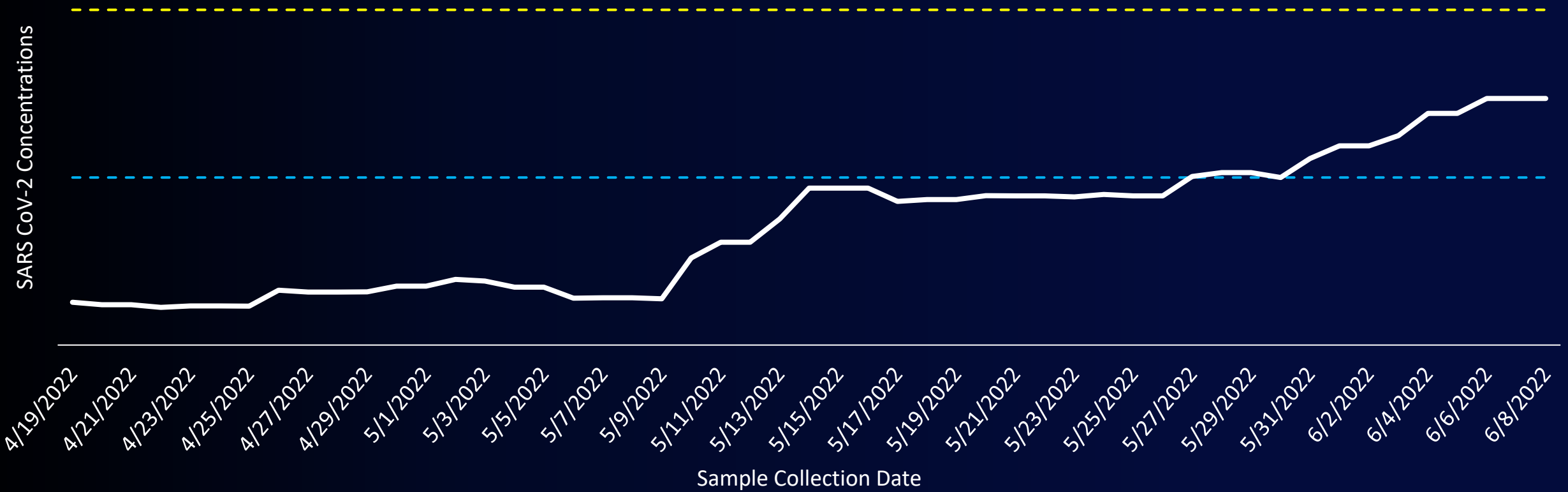
covid19.lacounty.gov

6/16/2022

- 1 Current 7-day period is 5/22/22 - 5/28/22
- 2 Current 7-day period is 6/6/22 - 6/12/22
- 3 Current 10-day period is 6/4/22 - 6/13/22
- 4 Current 7-day period is 6/8/22 - 6/14/22

Los Angeles County Sanitation Districts (Joint Water Pollution Control Plant) SARS-CoV-2 Wastewater Concentration

- - - Average from 14 Days Ago — 10-Day Rolling Average - - - Twice Average from 14 Days Ago



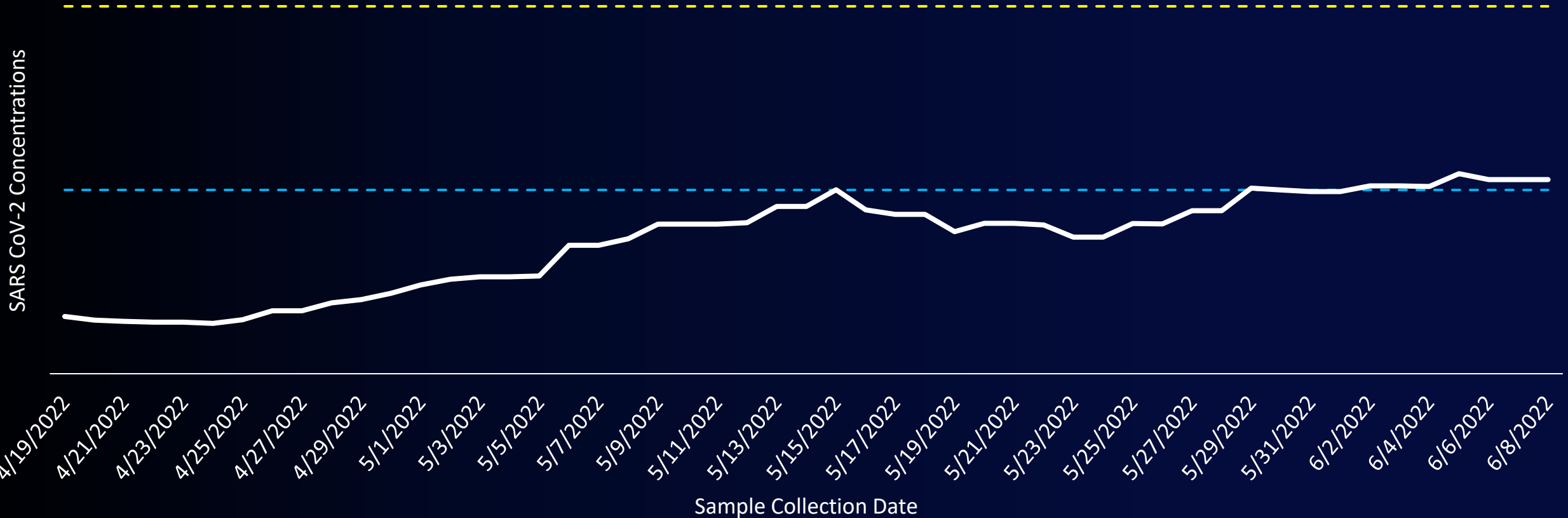
covid19.lacounty.gov

6/16/2022

Data from CDPH California Surveillance of Wastewater Systems (Cal-SuWers) Network

Los Angeles City Sanitation and Environment (Hyperion) SARS-CoV-2 Wastewater Concentration

--- Average from 14 Days Ago — 10-Day Rolling Average - - - Twice Average from 14 Days Ago



4/19/2022 4/21/2022 4/23/2022 4/25/2022 4/27/2022 4/29/2022 5/1/2022 5/3/2022 5/5/2022 5/7/2022 5/9/2022 5/11/2022 5/13/2022 5/15/2022 5/17/2022 5/19/2022 5/21/2022 5/23/2022 5/25/2022 5/27/2022 5/29/2022 5/31/2022 6/2/2022 6/4/2022 6/6/2022 6/8/2022

Sample Collection Date

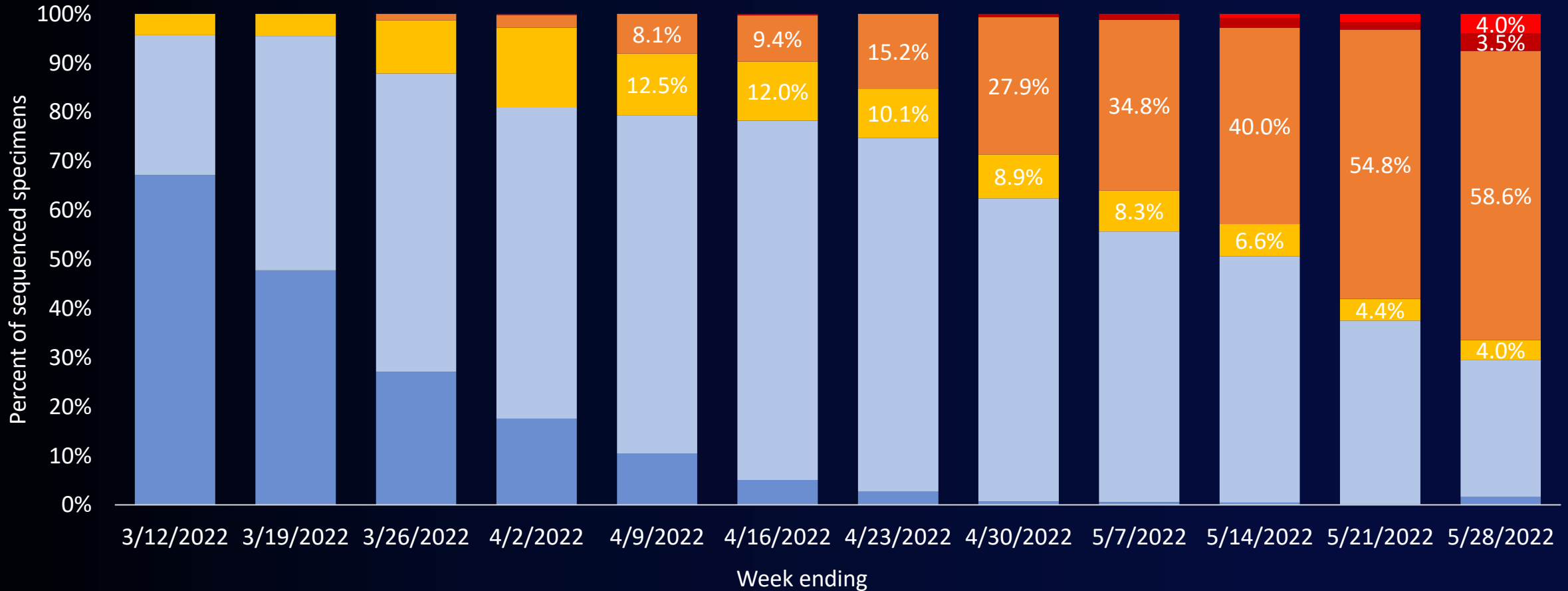


covid19.lacounty.gov

6/16/2022

Data from CDPH California Surveillance of Wastewater Systems (Cal-SuWers) Network

SARS-CoV-2 Variants as a Percentage of All Specimens Sequenced for Baseline Variant Surveillance



■ All other Omicron
 ■ Omicron BA.2 (Excludes BA.2.3* and BA.2.12.1)
 ■ Omicron BA.2.3*
 ■ Omicron BA.2.12.1
 ■ Omicron BA.4
 ■ Omicron BA.5



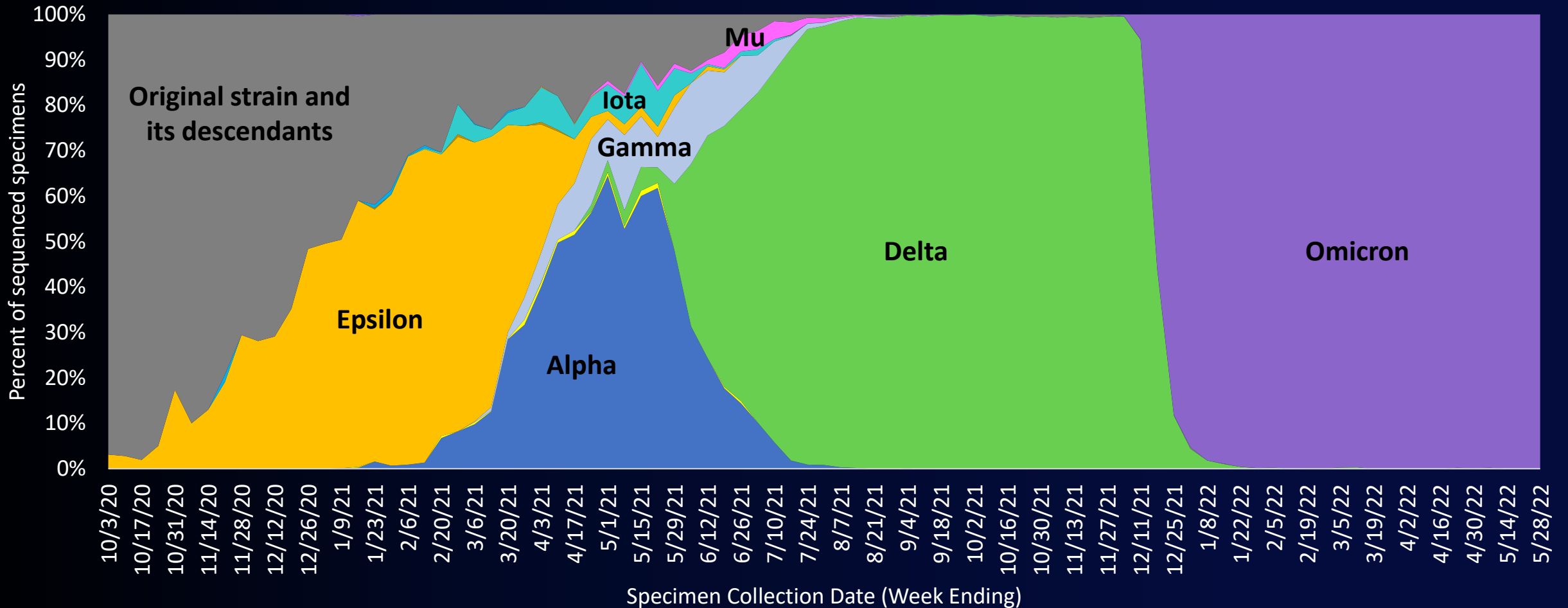
covid19.lacounty.gov

6/16/2022

*Includes descendant lineages (sub-lineages)

A Look Back: SARS-CoV-2 Variants Since October 2020

Shown Without Sublineages



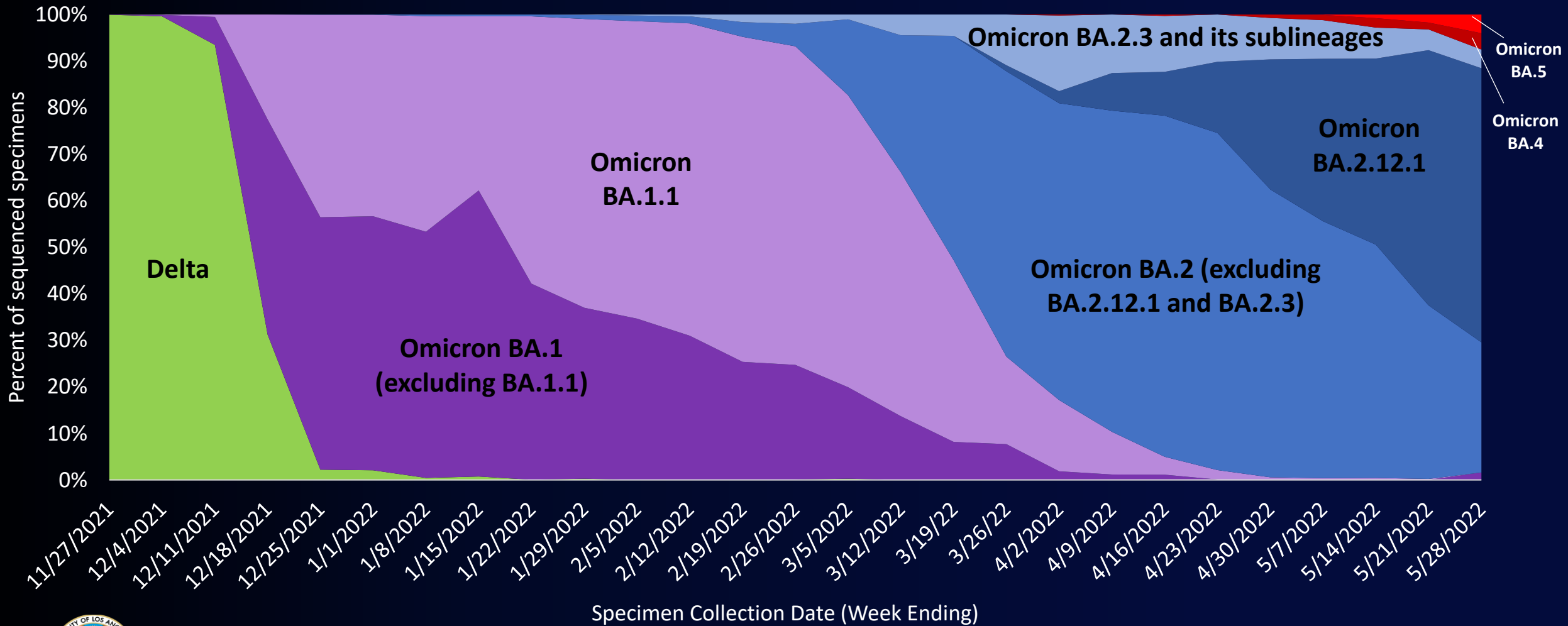
■ Alpha
 ■ Beta
 ■ Delta
 ■ Gamma
 ■ Epsilon
 ■ Eta
 ■ Iota
 ■ Kappa
 ■ Mu
 ■ Zeta
 ■ Not a VoC/I
 ■ Omicron

covid19.lacounty.gov

6/16/2022

A Look Back: SARS-CoV-2 Variants Since November 2021

Shown With Omicron Sublineages



[covid19.lacounty.gov](https://www.covid19.lacounty.gov)

6/16/2022



Testing



What if you are sick and your test is negative?

- Stay home at least until you have been fever-free for at least 24 hours
- For antigen / home tests – Continue to stay away from others and take another test at least a day later. *Read and follow test instructions carefully.*



What if you test positive and you feel fine?

- You can still spread COVID-19 to other people. You must follow isolation instructions - ph.lacounty.gov/covidisolation
- If you are at high risk for getting really sick from COVID-19, make sure you have a plan for how to get medicine to treat COVID-19 if you develop any symptoms. These medicines work best when they are taken soon after symptoms start.



covid19.lacounty.gov

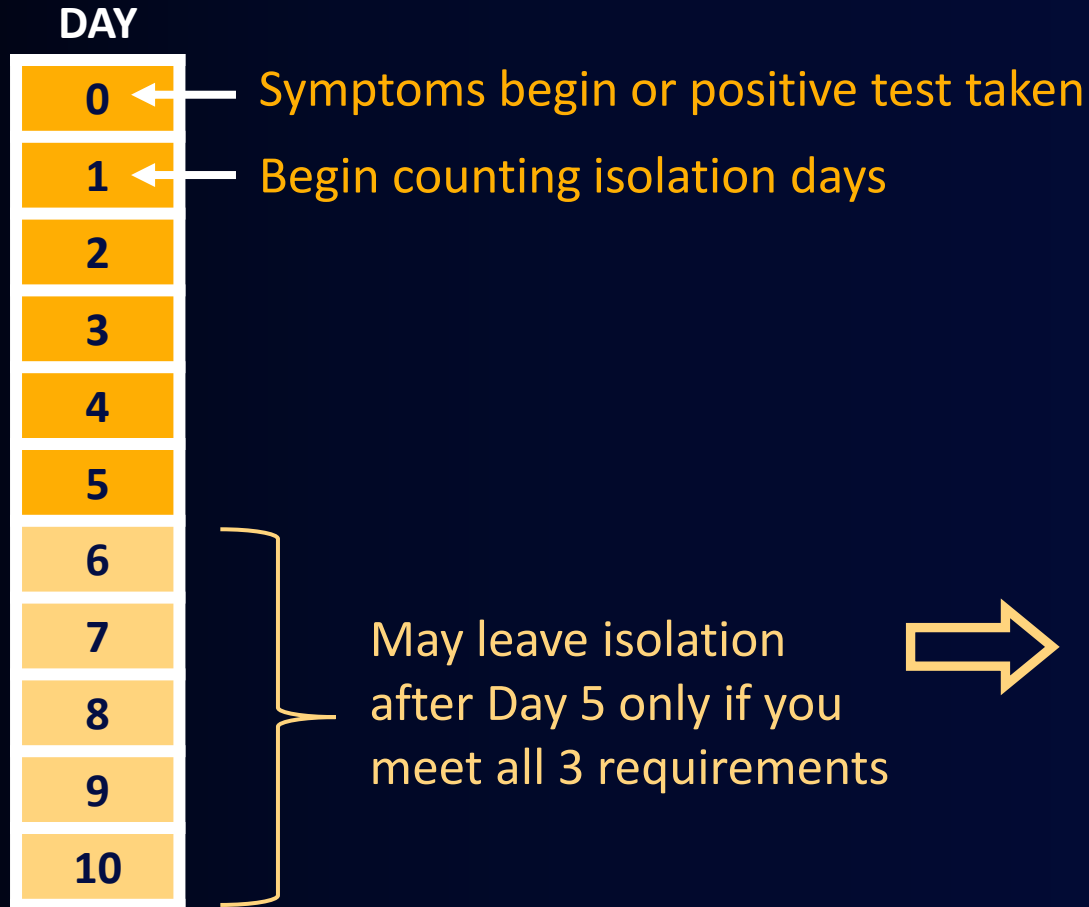
6/16/2022

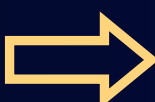
ph.lacounty.gov/covidtests



When can you leave isolation if you tested positive?

Wear a mask around others



- 
1. Test negative on or after Day 5 (antigen test preferred)
 2. Have been fever-free for 24 hours (without fever-reducing medicines)
 3. Have no symptoms or symptoms improving



covid19.lacounty.gov

6/16/2022

ph.lacounty.gov/covidisolation

If you are immunocompromised or have severe COVID-19, you may need to isolate longer. Talk with your doctor about when you can be around others.



Testing Which test should I choose - PCR or antigen?



PCR

- Detects parts of viral **RNA**
- Very sensitive - detects virus at low levels
- Can stay positive when person no longer infectious
- Sample usually needs to go to lab

Good choice if:

- You have symptoms, and did NOT have COVID in last 90 days

Best choice if:

- You need a very sensitive test



Antigen

- Detects viral **proteins**
- Less sensitive - needs a higher level of virus to be positive
- Fast, convenient
- Most home tests

Best choice if:

- You need results quickly
- You are testing to leave isolation after Day 5
- You had COVID in the last 90 days, and have new symptoms

Do tests still work to detect Omicron? *Yes*



covid19.lacounty.gov

6/16/2022

ph.lacounty.gov/covidtests



Update: New COVID-19 Vaccines for Children

Age Group	Vaccine	Recent Developments	Next Steps
6 months - 4 years	Pfizer-BioNTech <i>3-dose</i>	June 14, 15– FDA’s advisory committee recommended EUA for these vaccines	This week – FDA may issue EUA June 17, 18 - CDC’s Advisory committee will review
6 months - 5 years	Moderna <i>2-dose</i>		
6-11 years	Moderna <i>2-dose</i>		
12-17 years	Moderna <i>2-dose</i>		

