

FETAL DEATH

TITLE V INDICATOR TEMPLATES

INDICATOR: Fetal deaths

DEFINITION: The number of fetal deaths of 20 weeks or more gestational age per 1,000 live births plus fetal deaths

NUMERATOR: The number of fetal deaths of 20 weeks or more gestation, by place of residence, in a calendar year

DENOMINATOR: The total number of live births plus fetal deaths, by place of residence, in a calendar year

HEALTHY PEOPLE 2010 OBJECTIVE:

Reduce the fetal death rate (20 or more weeks of gestation) to no more than 4.1 per 1,000 live births plus fetal deaths. (Baseline: 6.8 per 1,000 live births plus fetal deaths in 1997) (Objective 16.1a)

RISK FACTORS:

Race/ethnicity (African American); maternal diabetes; pregnancy complications; maternal medical complications/chronic illness during pregnancy (including severe maternal infection); Rh sensitization; congenital anomalies; intrauterine cocaine exposure; maternal history of miscarriage

Year	California				LA County			
	Fetal Death		95% Confidence Interval		Fetal Death		95% Confidence Interval	
	Number	Rate	Lower	Upper	Number	Rate	Lower	Upper
1990	3,989	6.5	6.3	6.7	1,227	6.0	5.6	6.3
1991	3,834	6.3	6.1	6.5	1,194	5.9	5.5	6.2
1992	3,704	6.1	5.9	6.3	1,240	6.2	5.9	6.6
1993	3,574	6.0	5.9	6.3	1,057	5.5	5.2	5.9
1994	3,299	5.8	5.6	6.0	1,018	5.6	5.3	6.0
1995	3,355	6.0	5.8	6.3	964	5.5	5.1	5.8
1996	3,330	6.1	5.9	6.4	1,024	6.0	5.7	6.4
1997	2,996	5.7	5.5	5.9	866	5.3	5.0	5.7
1998	3,053	5.8	5.6	6.0	821	5.1	4.8	5.5
1999	2,927	5.6	5.4	5.8	801	5.1	4.8	5.5
2000	3,046	5.7	5.5	5.9	864	5.5	5.1	5.8
2001	2,952	5.6	5.4	5.8	784	5.1	4.7	5.4

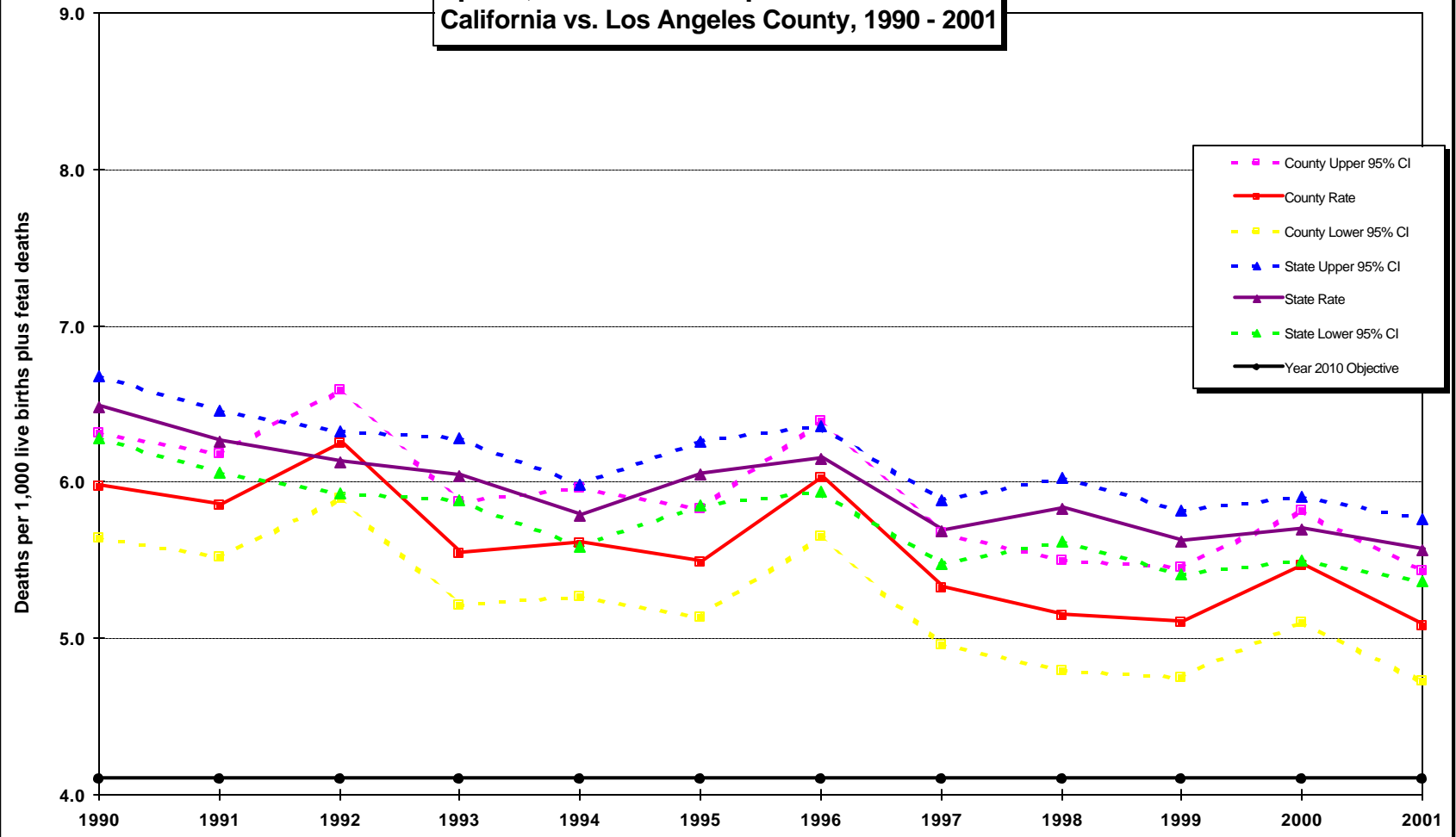
DENOMINATOR: Total Births*	
California	LA County
615,655	205,351
613,062	203,931
604,542	198,655
588,057	190,763
570,333	181,412
554,581	175,826
541,958	169,997
527,170	162,902
524,318	159,425
521,000	156,954
534,331	158,255
530,323	154,307

Source: California Department of Health Services, Center for Health Statistics, Vital Statistics, 2001

Note: Total births = number of live births + number of fetal deaths

For number of fetal deaths in Los Angeles County, missing records were excluded (n=92 in 2001)

**Fetal Deaths
per 1,000 Live Births plus Fetal Deaths
California vs. Los Angeles County, 1990 - 2001**

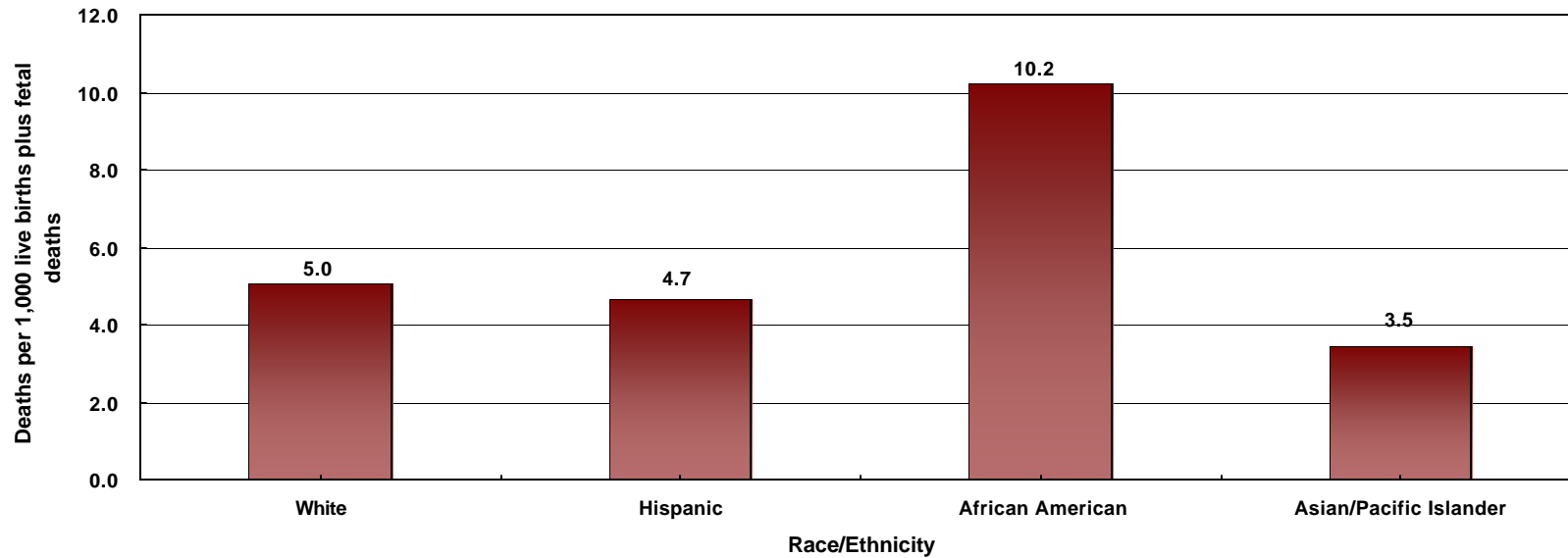


Year 2010 Objective: Reduce the fetal death rate (20 or more weeks of gestation) to no more than 4.1 per 1,000 live births plus fetal deaths.

Source: California Department of Health Services, Center for Health Statistics, Vital Statistics, 2001

Note: For number of fetal deaths in Los Angeles County, missing records were excluded (n=92 in 2001)

Fetal Mortality Rate by Mother's Race/Ethnicity* Los Angeles County, 2001



Race/Ethnicity	Los Angeles County, 2001			
	Fetal Mortality		95% Confidence Interval	
	Number	Rate	Lower	Upper
White	143	5.0	4.2	5.9
Hispanic	450	4.7	4.2	5.1
African American	131	10.2	8.5	12.0
Asian/Pacific Islander	54	3.5	2.5	4.4
Native American	1	N/C**	N/C**	N/C**
Other/Unknown	5	8.3	1.1	15.6
Total	784	5.1	4.7	5.4

Total Births
28,322
96,738
12,802
15,591
254
600
154,307

* White, African American, Asian, Native American and other races exclude Hispanic ethnicity
 Hispanic includes any race category
 ** Rates are not calculated if fewer than five deaths.

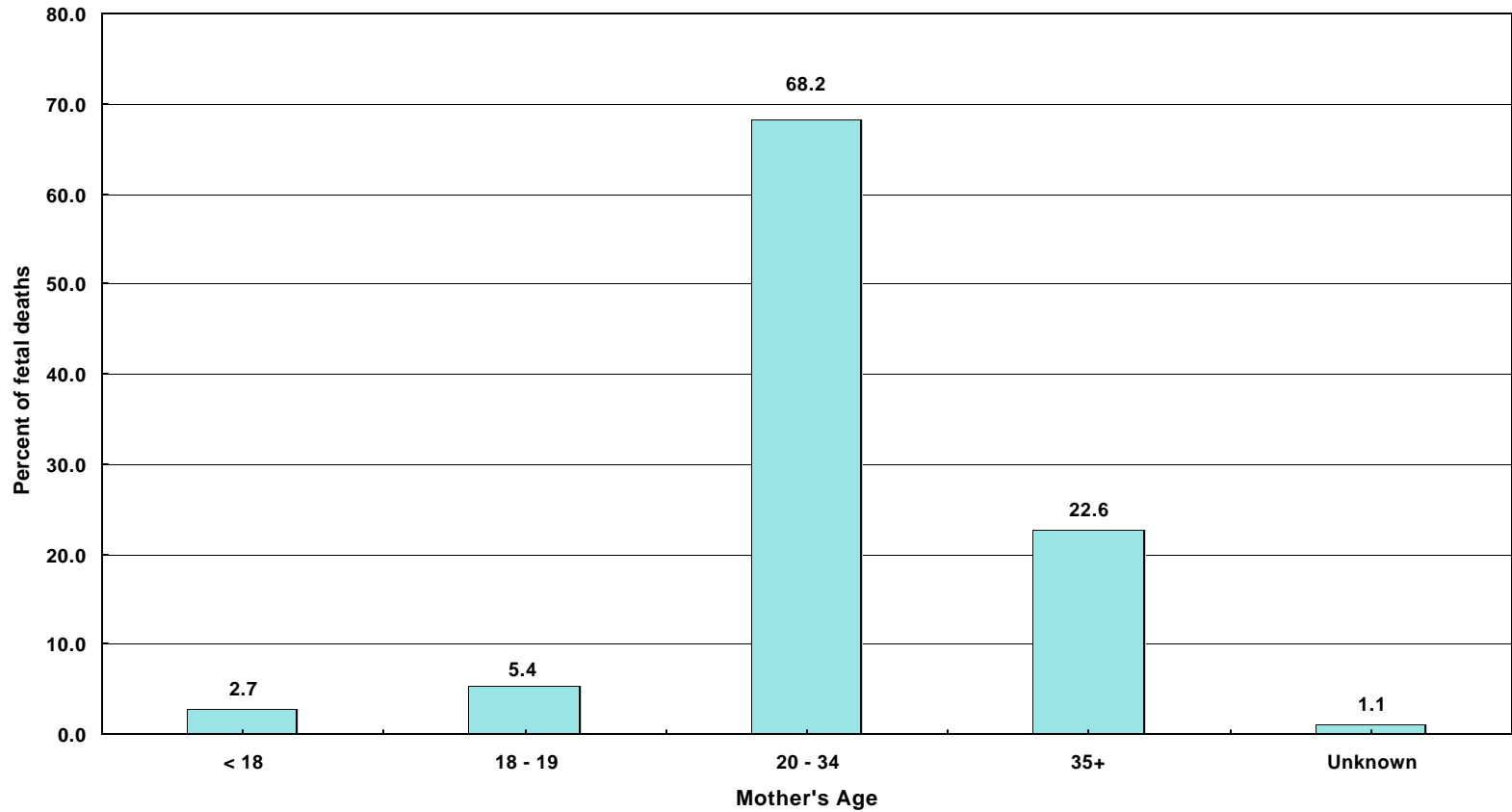
Year 2010 Objective: Reduce the fetal death rate (20 or more weeks of gestation) to no more than 4.1 per 1,000 live births plus fetal deaths.

Note: Fetal mortality rates are fetal deaths per 1,000 live births plus fetal deaths. Fetal deaths are those occurring during 20 weeks or more gestational period.

For number of fetal deaths in Los Angeles County, missing records were excluded (n=92 in 2001)

Source: California Department of Health Services, Center for Health Statistics, Vital Statistics, 2001

Percent of Fetal Deaths by Mother's Age
Los Angeles County, 2001



Mother's Age									
< 18		18 - 19		20 - 34		35+		Unknown	
Number	Percent	Number	Percent	Number	Percent	Number	Percent	Number	Percent
21	2.7	42	5.4	535	68.2	177	22.6	9	1.1

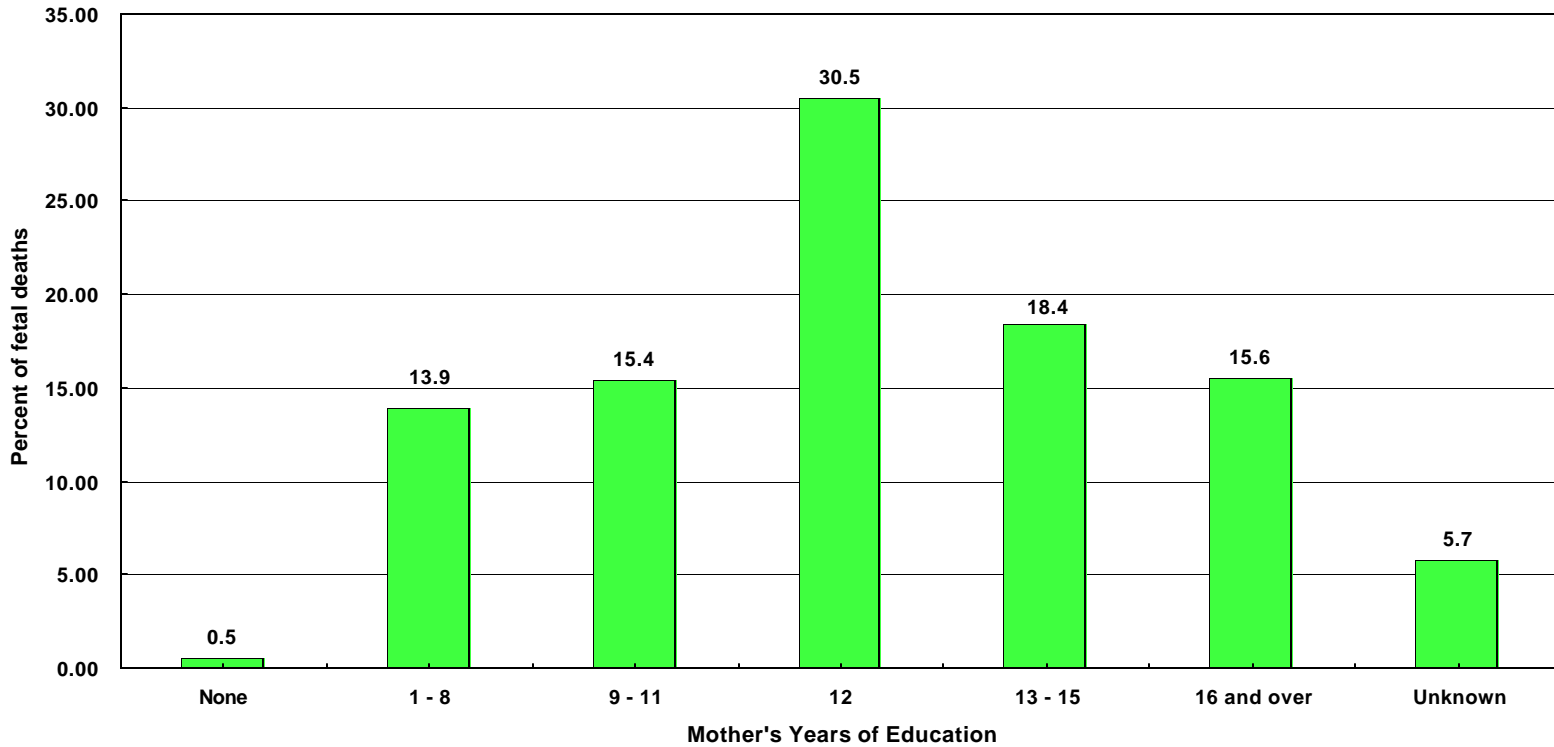
Source: California Department of Health Services, Center for Health Statistics, Vital Statistics, 2001

Note: Total number of fetal deaths in 2001 was 784.

Fetal deaths are those occurring during 20 weeks or more gestational period.

For number of fetal deaths in Los Angeles County, missing records were excluded (n=92 in 2001)

Percent of Fetal Deaths by Mother's Years of Education
Los Angeles County, 2001



Years of Education													
None		1 - 8		9 - 11		12		13 - 15		16 and over		Unknown	
Number	Percent	Number	Percent	Number	Percent	Number	Percent	Number	Percent	Number	Percent	Number	Percent
4	0.5	109	13.9	121	15.4	239	30.5	144	18.4	122	15.6	45	5.7

Note: Total number of fetal deaths in 2001 was 784.

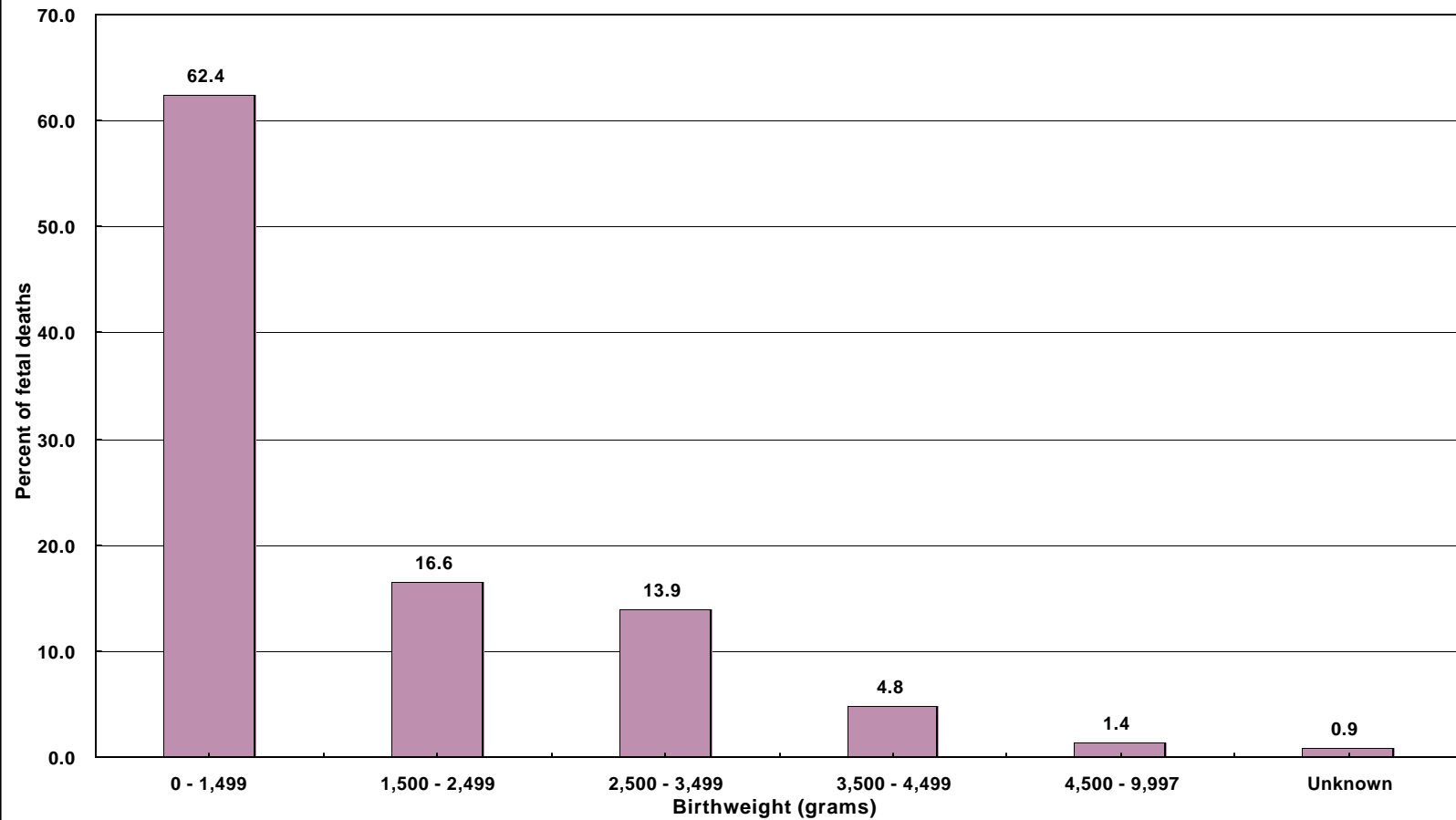
Fetal deaths are those occurring during 20 weeks or more gestational period.

This analysis did not adjust for teen mothers who may not be old enough to have reached higher educational level.

For number of fetal deaths in Los Angeles County, missing records were excluded (n=92 in 2001)

Source: California Department of Health Services, Center for Health Statistics, Vital Statistics, 2001

**Percent of Fetal Deaths by Birthweight Category
Los Angeles County, 2001**



Birthweight (grams)											
0 - 1,499		1,500 - 2,499		2,500 - 3,499		3,500 - 4,499		4,500 - 9,997		Unknown	
Number	Percent	Number	Percent	Number	Percent	Number	Percent	Number	Percent	Number	Percent
489	62.4	130	16.6	109	13.9	38	4.8	11	1.4	7	0.9

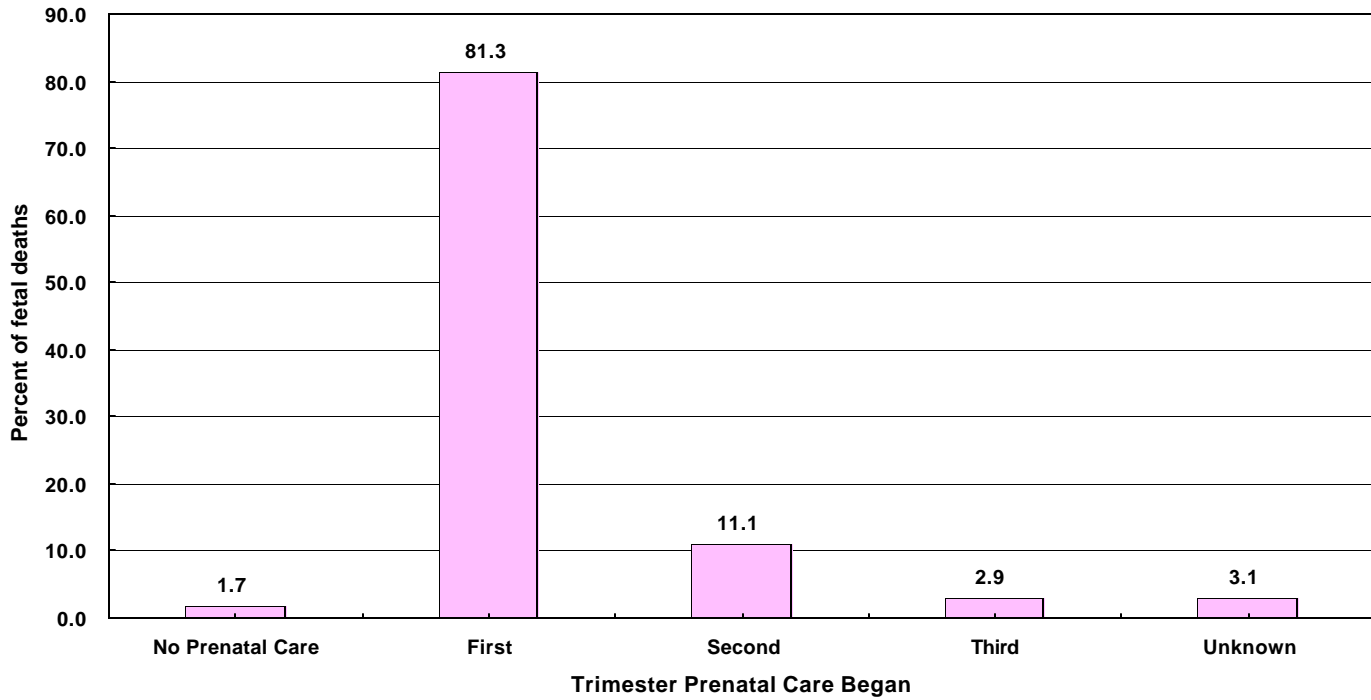
Note: Total number of fetal deaths in 2001 was 784.

Fetal deaths are those occurring during 20 weeks or more gestational period.

Source: California Department of Health Services, Center for Health Statistics, Vital Statistics, 2001

For number of fetal deaths in Los Angeles County, missing records were excluded (n=92 in 2001)

**Percent of Fetal Deaths
by Mother's Trimester Prenatal Care (PNC) Began
Los Angeles County, 2001**



Trimester Prenatal Care Began									
No Prenatal Care		First		Second		Third		Unknown	
Number	Percent	Number	Percent	Number	Percent	Number	Percent	Number	Percent
13	1.7	637	81.3	87	11.1	23	2.9	24	3.1

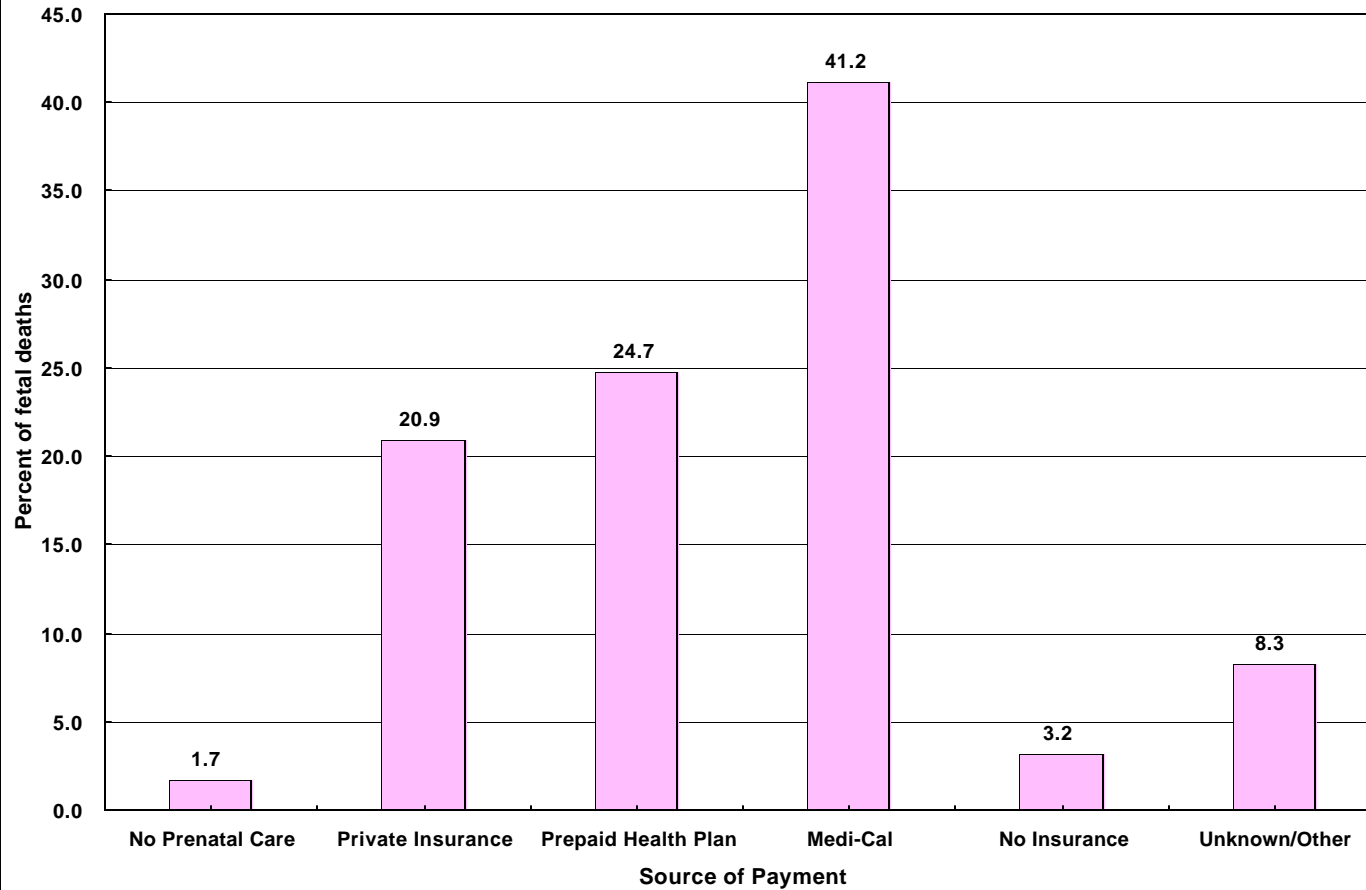
Note: Total number of fetal deaths in 2001 was 784.

Fetal deaths are those occurring during 20 weeks or more gestational period.

For number of fetal deaths in Los Angeles County, missing records were excluded (n=92 in 2001)

Source: California Department of Health Services, Center for Health Statistics, Vital Statistics, 2001

**Percent of Fetal Deaths by Source of Payment
for Prenatal Care (PNC)
Los Angeles County, 2001**



Source of Payment											
No Prenatal Care		Private Insurance		Prepaid Health Plan		Medi-Cal		No Insurance		Unknown/Other	
Number	Percent	Number	Percent	Number	Percent	Number	Percent	Number	Percent	Number	Percent
13	1.7	164	20.9	194	24.7	323	41.2	25	3.2	65	8.3

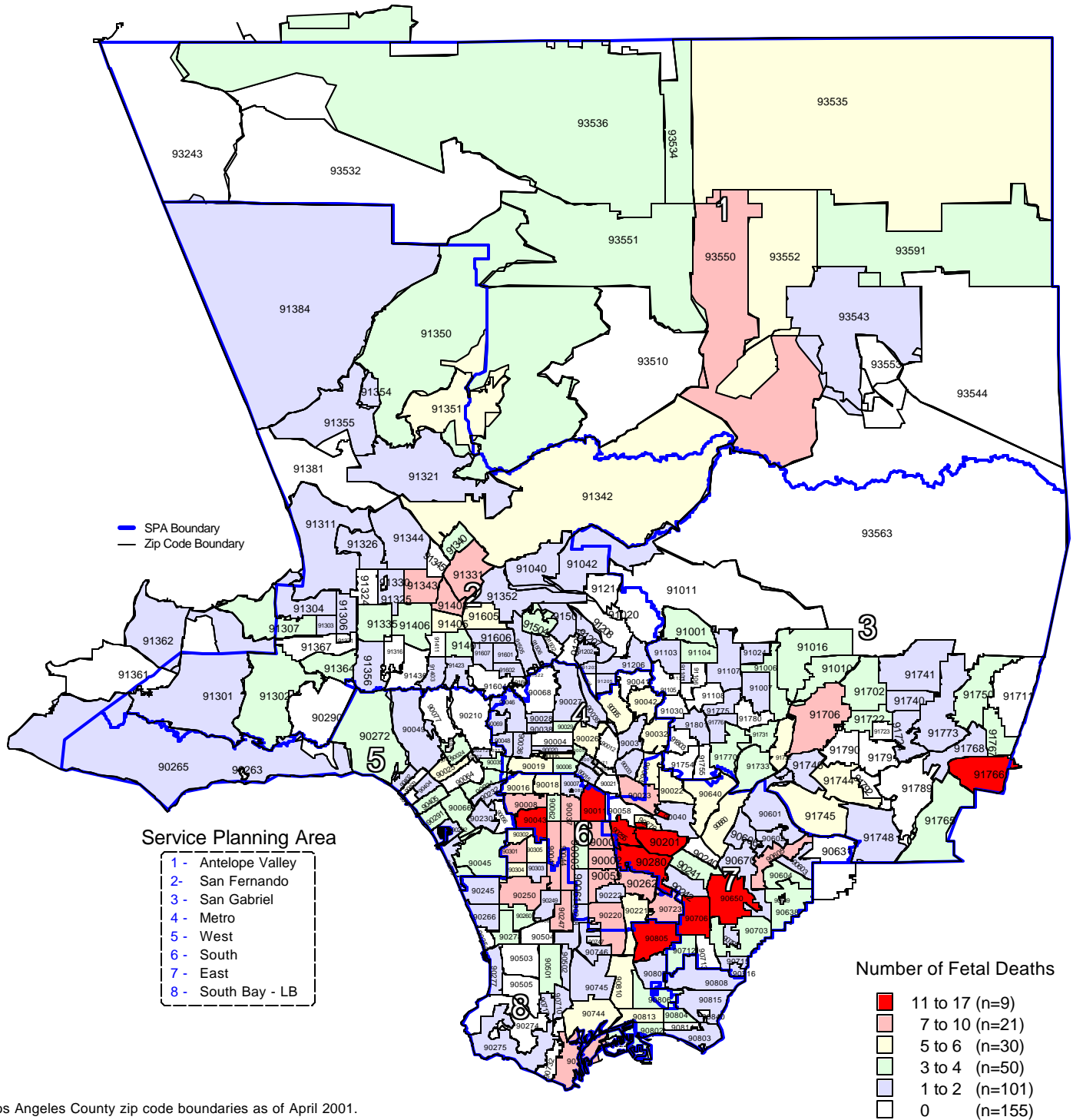
Note: Total number of fetal deaths in 2001 was 784.

Fetal deaths are those occurring during 20 weeks or more gestational period.

For number of fetal deaths in Los Angeles County, missing records were excluded (n=92 in 2001)

Source: California Department of Health Services, Center for Health Statistics, Vital Statistics, 2001

Los Angeles County - Department of Health Services
Number of Fetal Deaths
by Zip Code* and Service Planning Area (SPA)
 Los Angeles County, 2001



* Los Angeles County zip code boundaries as of April 2001.

Total number of live births in Los Angeles County, 2001 = 153,523

Total number of fetal deaths in Los Angeles County, 2001 = 784

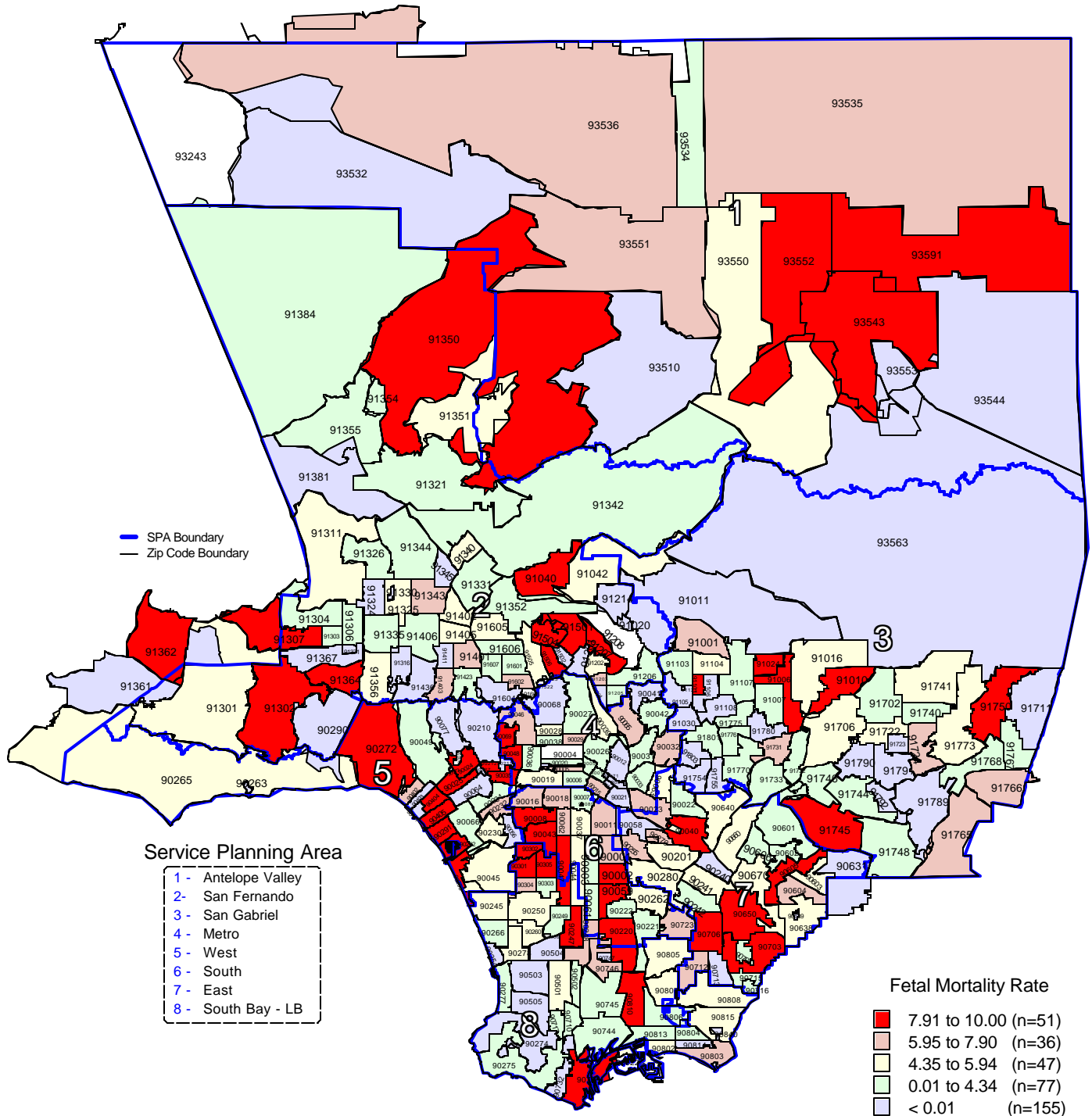
Note: Fetal Deaths is defined as death occurring during 20 weeks or more gestational period

Source: California Department of Health Services
 Center for Health Statistics, Vital Statistics, 2001

n = total number of zip codes in range

Fetal Mortality Rate by Zip Code* and Service Planning Area (SPA)

Los Angeles County, 2001



* Los Angeles County zip code boundaries as of April 2001.

Total number of live births in Los Angeles County, 2001 = 153,523

Total number of fetal deaths in Los Angeles County, 2001 = 784

Note: Fetal Mortality Rate is defined as death occurring during 20 weeks or more gestational period per 1,000 live births plus fetal deaths

Source: California Department of Health Services

Center for Health Statistics, Vital Statistics, 2001

n = total number of zip codes in range