

# **Prenatal Care**

**TITLE V INDICATOR TEMPLATE**

**INDICATOR:** First Trimester Onset of Prenatal Care (PNC)

**DEFINITION:** The percent of live born infants whose mothers received prenatal care in the first trimester of pregnancy

**NUMERATOR:** The number of live births to women who received prenatal care during the first trimester, by place of residence, in a calendar year

**DENOMINATOR:** The total number of live births, by place of residence, in a calendar year

**HEALTHY PEOPLE 2010 OBJECTIVE:**

Increase the proportion of pregnant women who receive prenatal care in the first trimester of pregnancy to 90 percent of live births.  
(Baseline: 83 percent of live births in 1998) (Objective 16-6a)

**HEALTHY PEOPLE 2020 OBJECTIVE:**

Increase the proportion of pregnant women who receive prenatal care in the first trimester of pregnancy to 77.9 percent of live births.  
(Baseline: 70.8 percent of pregnant women in 2007) (Objective MICH-10.1)

**RISK FACTORS:** For not obtaining early prenatal care Low income; young maternal age/teen pregnancy; low maternal education level; race/ethnicity (African American, Hispanic, American Indian/Alaska Native); high parity; maternal substance abuse; lack of health insurance; lack of obstetric providers

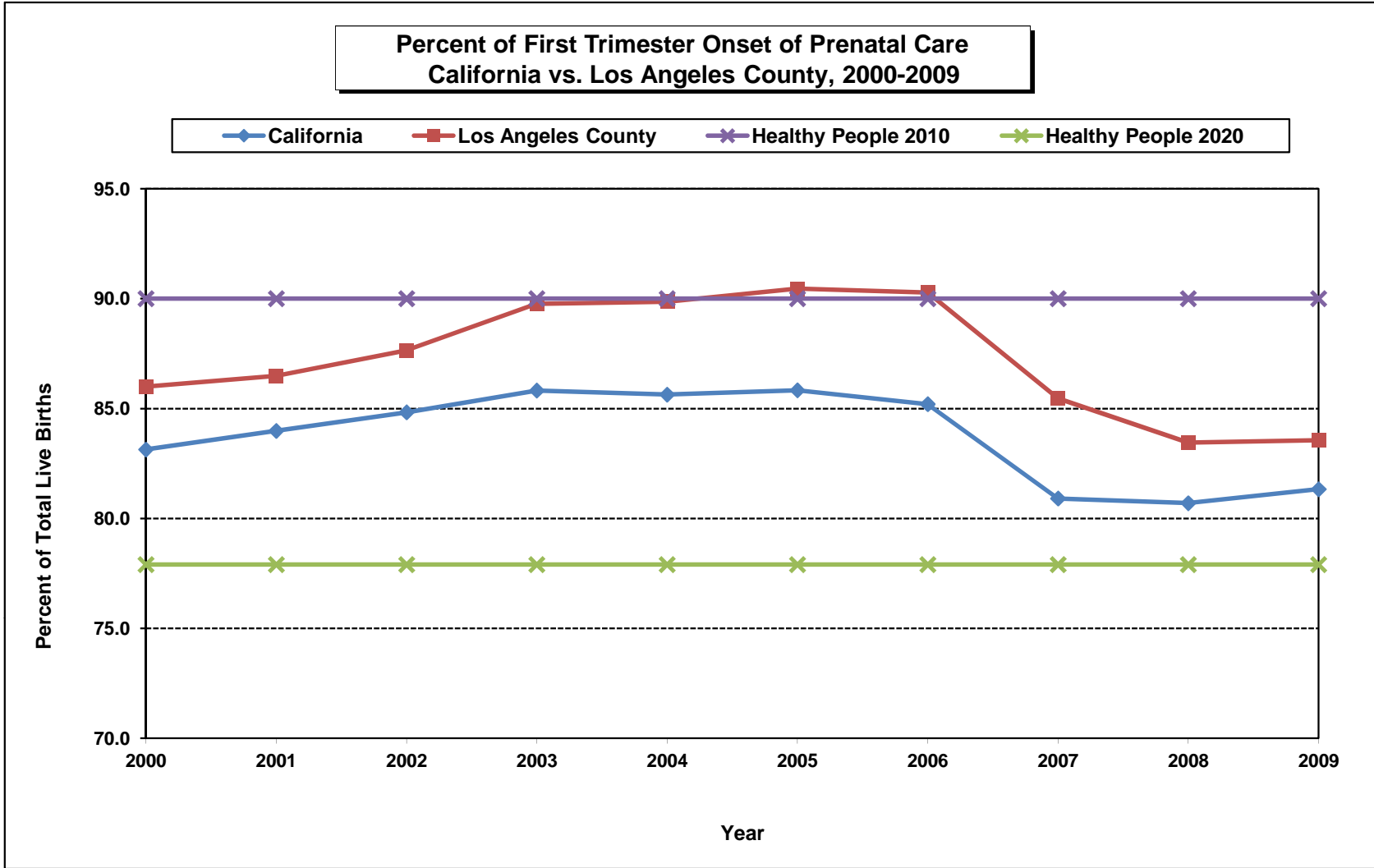
Year	California				Los Angeles County			
	First Trimester Prenatal Care		95% Confidence Interval		First Trimester Prenatal Care		95% Confidence Interval	
	Number	Percent	Lower	Upper	Number	Percent	Lower	Upper
2000	441,712	83.1	83.0	83.2	135,356	86.0	85.8	86.2
2001	442,936	84.0	83.9	84.1	132,776	86.5	86.3	86.7
2002	448,955	84.8	84.7	84.9	132,493	87.6	87.5	87.8
2003	464,156	85.8	85.7	85.9	136,609	89.8	89.6	89.9
2004	466,463	85.6	85.5	85.7	136,144	89.9	89.7	90.0
2005	470,955	85.8	85.7	85.9	136,020	90.5	90.3	90.6
2006	478,973	85.2	85.1	85.3	137,077	90.3	90.1	90.4
2007	459,188	80.9	80.8	81.0	129,741	85.5	85.3	85.6
2008	445,108	80.7	80.6	80.8	123,251	83.5	83.3	83.6
2009	428,449	81.3	81.2	81.4	116,717	83.6	83.4	83.8

Denominator: Live Births		
Year	California	LA County
2000	531,285	157,391
2001	527,371	153,523
2002	529,245	151,167
2003	540,827	152,192
2004	544,685	151,504
2005	548,700	150,377
2006	562,157	151,837
2007	567,527	151,813
2008	551,567	147,684
2009	526,774	139,679

Note: The decrease in first-trimester entry in 2007 is due at least in part to a recategorization of this data in birth certificates.

This measure excludes the prenatal care experiences of all women whose pregnancies did not result in live births.

Source: California Department of Public Health, Center for Health Statistics, OHIR Vital Statistics Section, 2000-2009.



Year 2010 Objective: Increase the proportion of pregnant women who receive prenatal care in the first trimester of pregnancy to 90 percent of live births.

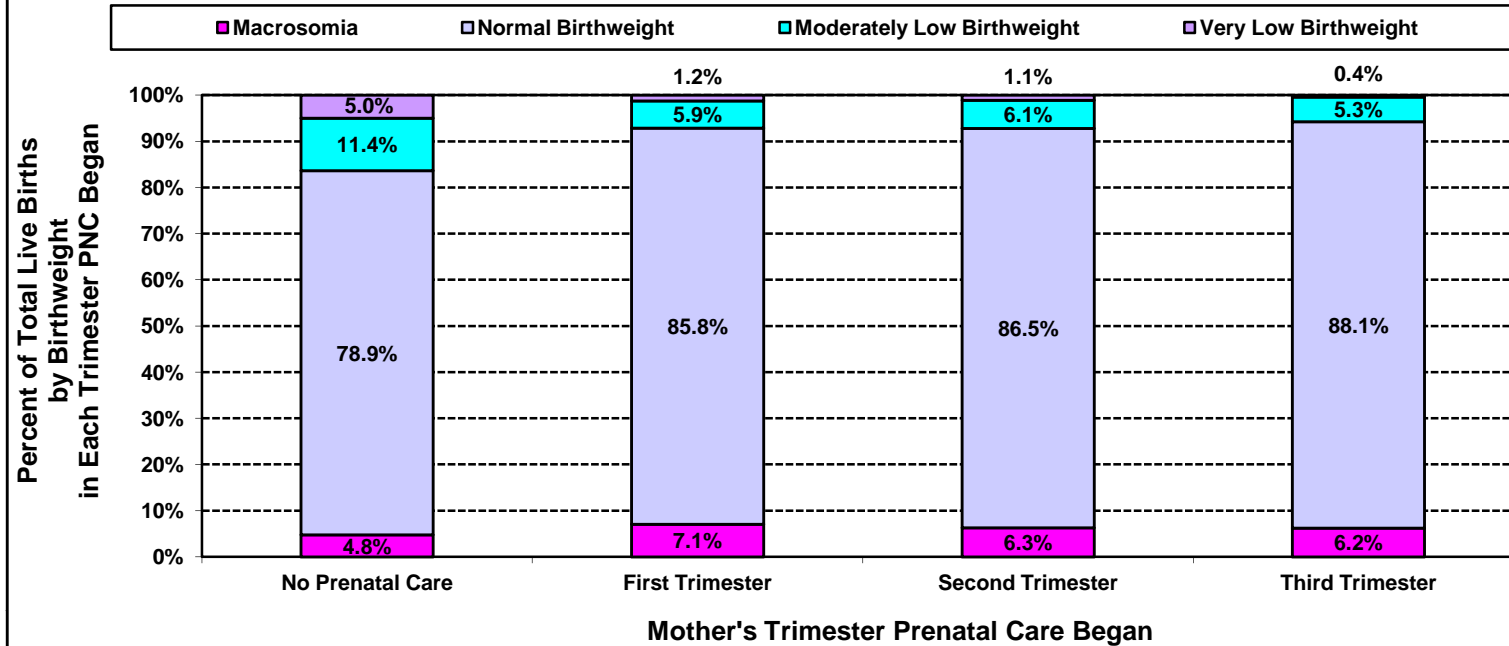
Year 2020 Objective: Increase the proportion of pregnant women who receive prenatal care in the first trimester of pregnancy to 77.9 percent of live births.

Note: The decrease in first-trimester entry in 2007 is due at least in part to a recategorization of this data in birth certificates.

This measure excludes the prenatal care experiences of all women whose pregnancies did not result in live births.

Source: California Department of Public Health, Center for Health Statistics, OHIR Vital Statistics Section, 2000-2009.

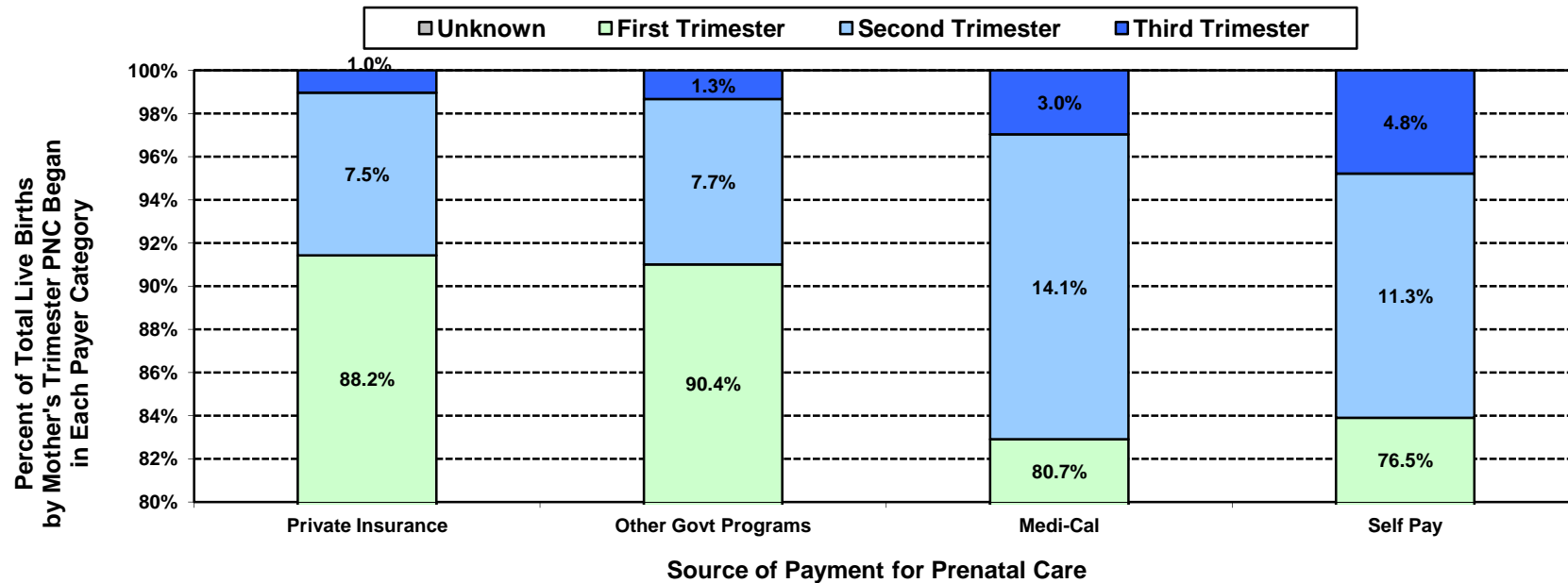
**Percent of Total Live Births  
by Birthweight and by Mother's Trimester Prenatal Care (PNC) Began  
Los Angeles County, 2009**



Los Angeles County, 2009									Total Live Births
Mother's Trimester Prenatal Care Began	Very Low Birthweight		Moderately Low Birthweight		Normal Birthweight		Macrosomia		
	0 to 1,499 grams		1,500 to 2,499 grams		2,500 to 3,999 grams		4,000+ grams		
	Number	Percent	Number	Percent	Number	Percent	Number	Percent	
No Prenatal Care	22	5.0	50	11.4	347	78.9	21	4.8	440
First	1,417	1.2	6,857	5.9	100,198	85.8	8,245	7.1	116,717
Second	168	1.1	959	6.1	13,555	86.5	984	6.3	15,666
Third	11	0.4	161	5.3	2,654	88.1	188	6.2	3,014
Unknown	133	3.5	361	9.4	3,098	80.6	250	6.5	3,842
<b>Total</b>	<b>1,751</b>	<b>1.3</b>	<b>8,388</b>	<b>6.0</b>	<b>119,852</b>	<b>85.8</b>	<b>9,688</b>	<b>6.9</b>	<b>139,679</b>

Note: "Trimester Prenatal Care Began" excludes the prenatal care experiences of all women whose pregnancies did not result in a live birth.  
Source: California Department of Public Health, Center for Health Statistics, OHIR Vital Statistics Section, 2009

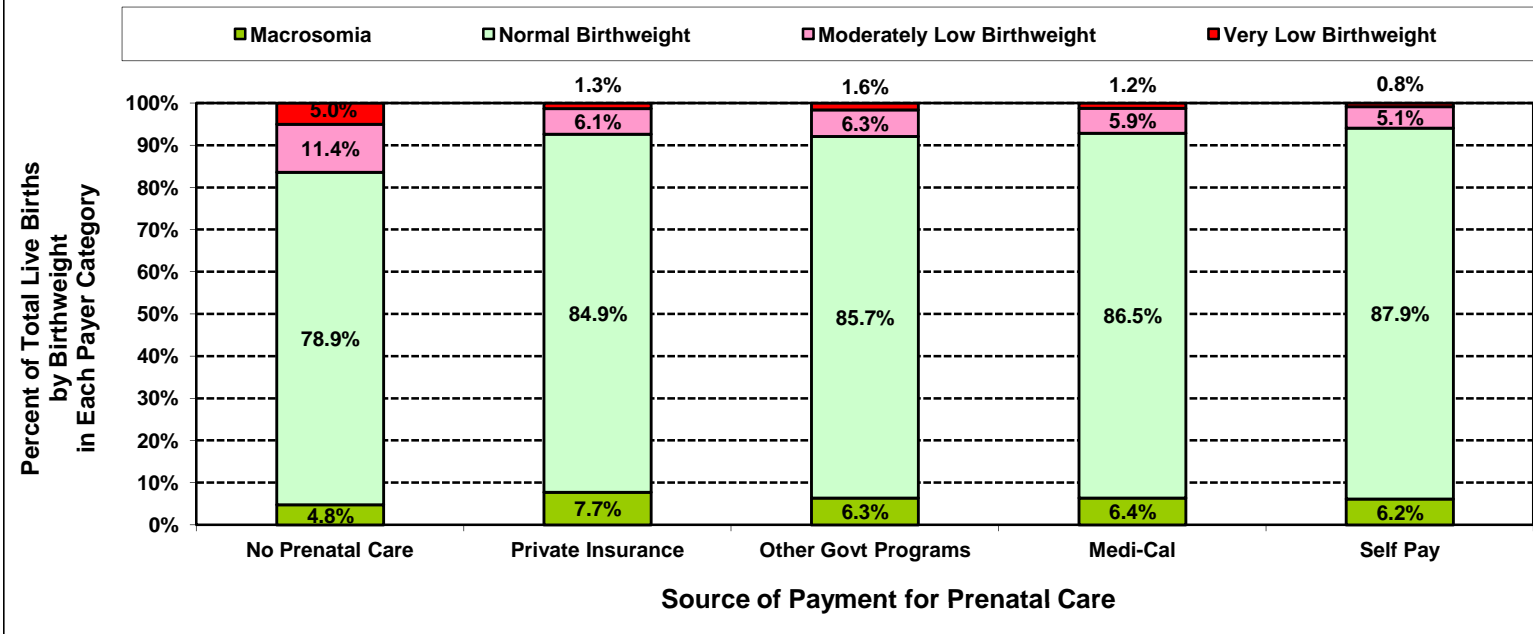
**Percent of Total Live Births by Mother's Trimester Prenatal Care (PNC) Began  
and by Source of Payment for Prenatal Care (PNC)  
Los Angeles County, 2009**



Los Angeles County, 2009											
Source of Payment for Prenatal Care	No Prenatal Care		Mother's Trimester Prenatal Care Began						Unknown		Total Live Births
	Number	Percent	First		Second		Third		Number	Percent	
			Number	Percent	Number	Percent	Number	Percent			
No Prenatal Care	440	100.0	<5	N/C	<5	N/C	<5	N/C	<5	N/C	440
Private Insurance	<5	N/C	48,480	88.2	4,142	7.5	566	1.0	1,761	3.2	54,949
Other Govt Programs	<5	N/C	1,839	90.4	156	7.7	27	1.3	12	0.6	2,034
Medi-Cal	<5	N/C	60,573	80.7	10,608	14.1	2,218	3.0	1,662	2.2	75,061
Self Pay	<5	N/C	2,305	76.5	341	11.3	144	4.8	222	7.4	3,012
Other/Unknown	<5	N/C	3,520	84.2	419	10.0	59	1.4	185	4.4	4,183
<b>Total</b>	<b>440</b>	<b>0.3</b>	<b>116,717</b>	<b>83.6</b>	<b>15,666</b>	<b>11.2</b>	<b>3,014</b>	<b>2.2</b>	<b>3,842</b>	<b>2.8</b>	<b>139,679</b>

Note: "Trimester Prenatal Care Began" excludes the prenatal care experiences of all women whose pregnancies did not result in a live birth.  
 Numbers fewer than 5 are shown as "<5". Rates are not calculated (N/C) if number is fewer than five.  
 Source: California Department of Public Health, Center for Health Statistics, OHIR Vital Statistics Section, 2009

**Percent of Total Live Births  
by Birthweight and by Source of Payment for Prenatal Care (PNC)  
Los Angeles County, 2009**

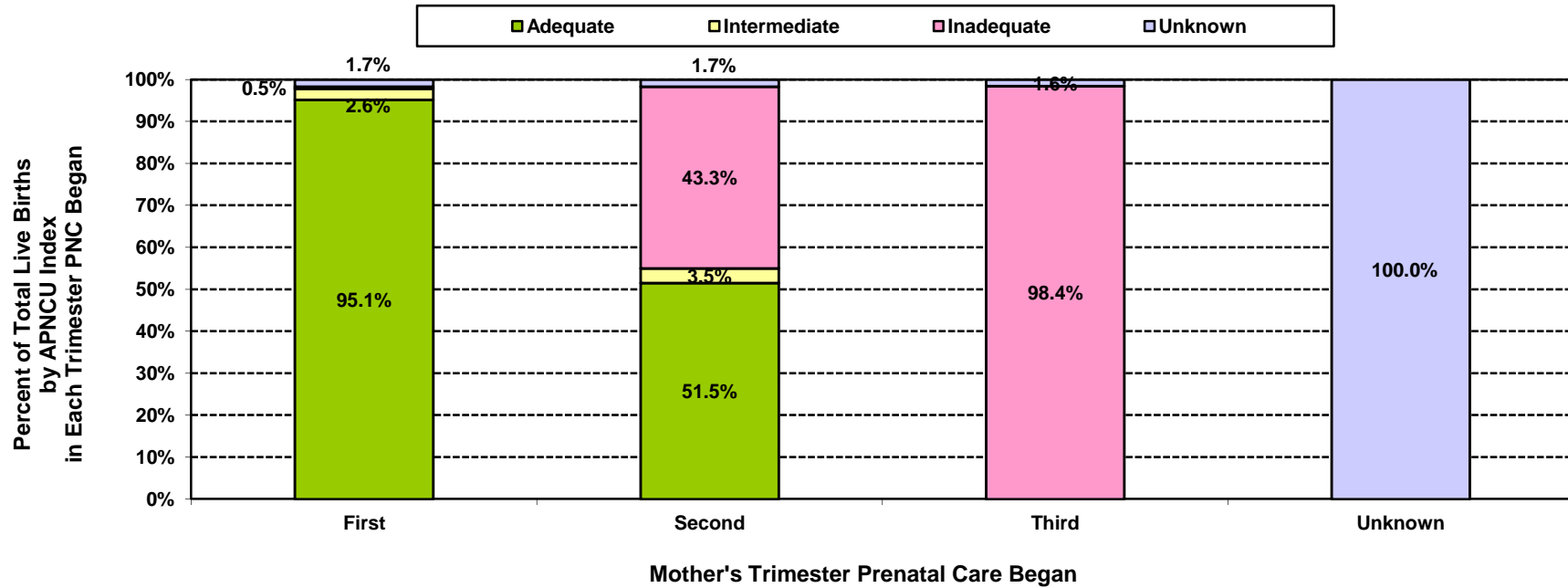


Los Angeles County, 2009									
Source of Payment for Prenatal Care	Very Low Birthweight		Moderately Low Birthweight		Normal Birthweight		Macrosumia		Total Live Births
	0 to 1,499 grams		1,500 to 2,499 grams		2,500 to 3,999 grams		4,000+ grams		
	Number	Percent	Number	Percent	Number	Percent	Number	Percent	
No Prenatal Care	22	5.0	50	11.4	347	78.9	21	4.8	440
Private Insurance	700	1.3	3,338	6.1	46,658	84.9	4,253	7.7	54,949
Other Govt Programs	33	1.6	128	6.3	1,744	85.7	129	6.3	2,034
Medi-Cal	899	1.2	4,431	5.9	64,948	86.5	4,783	6.4	75,061
Self Pay	24	0.8	155	5.1	2,647	87.9	186	6.2	3,012
Other/Unknown	73	1.7	286	6.8	3,508	83.9	316	7.6	4,183
<b>Total</b>	<b>1,751</b>	<b>1.3</b>	<b>8,388</b>	<b>6.0</b>	<b>119,852</b>	<b>85.8</b>	<b>9,688</b>	<b>6.9</b>	<b>139,679</b>

Note: "Trimester Prenatal Care Began" excludes the prenatal care experiences of all women whose pregnancies did not result in a live birth.

Source: California Department of Public Health, Center for Health Statistics, OHIR Vital Statistics Section, 2009

**Percent of Total Live Births by Adequacy of Prenatal Care Utilization Index  
and by Mother's Trimester Prenatal Care (PNC) Began  
Los Angeles County, 2009**

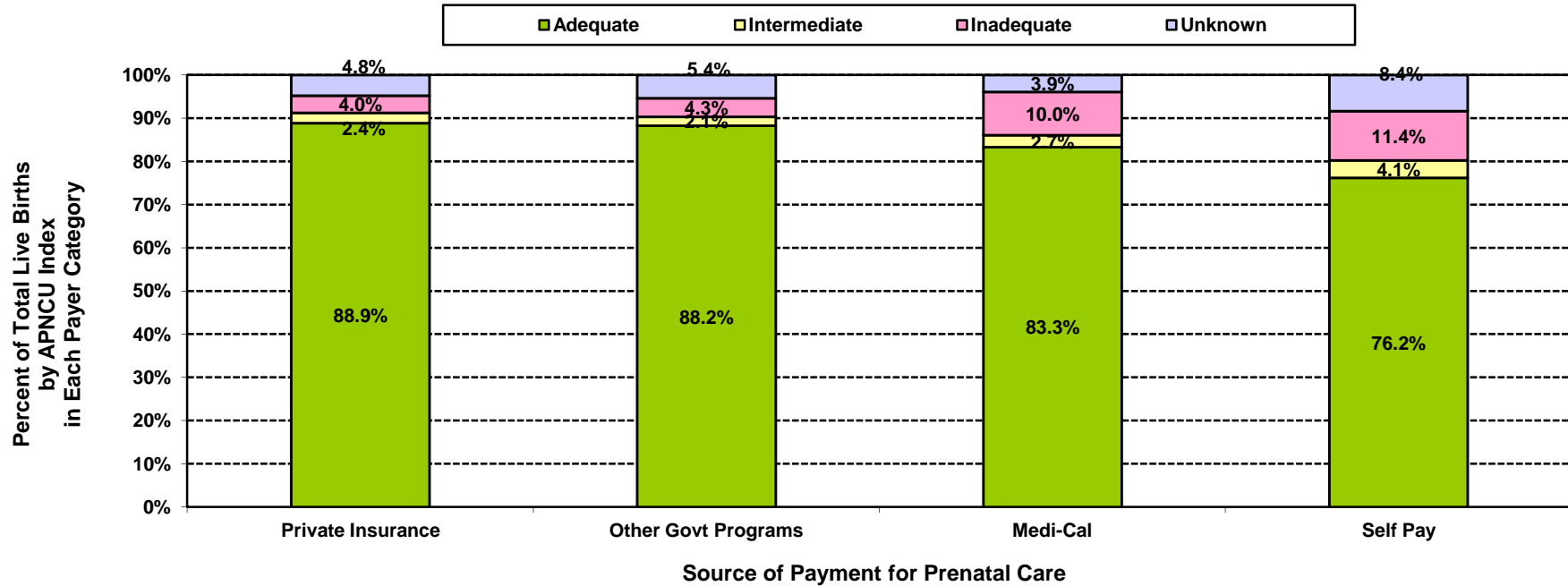


Los Angeles County, 2009									Total Live Births
Mother's Trimester Prenatal Care Began	Adequacy of Prenatal Care Utilization Index						Unknown		
	Adequate		Intermediate		Inadequate		Number	Percent	
	Number	Percent	Number	Percent	Number	Percent			
No Prenatal Care	<5	N/C	<5	N/C	440	100.0	<5	N/C	440
First	111,048	95.1	3,086	2.6	611	0.5	1,972	1.7	116,717
Second	8,063	51.5	550	3.5	6,789	43.3	264	1.7	15,666
Third	<5	N/C	<5	N/C	2,966	98.4	48	1.6	3,014
Unknown	<5	N/C	<5	N/C	<5	N/C	3,842	100.0	3,842
<b>Total</b>	<b>119,111</b>	<b>85.3</b>	<b>3,636</b>	<b>2.6</b>	<b>10,806</b>	<b>7.7</b>	<b>6,126</b>	<b>4.4</b>	<b>139,679</b>

Note: "Trimester Prenatal Care Began" excludes the prenatal care experiences of all women whose pregnancies did not result in a live birth. Numbers fewer than 5 are shown as "<5". Rates are not calculated (N/C) if number is fewer than five.

Source: California Department of Public Health, Center for Health Statistics, OHIR Vital Statistics Section, 2009

**Percent of Total Live Births by Adequacy of Prenatal Care Utilization Index  
and by Source of Payment for Prenatal Care (PNC)  
Los Angeles County, 2009**



Los Angeles County, 2009									Total Live Births
Source of Payment for Prenatal Care	Adequacy of Prenatal Care Utilization Index						Unknown		
	Adequate		Intermediate		Inadequate		Number	Percent	
	Number	Percent	Number	Percent	Number	Percent			
No Prenatal Care	<5	N/C	<5	N/C	440	100.0	<5	N/C	440
Private Insurance	48,838	88.9	1,319	2.4	2,179	4.0	2,613	4.8	54,949
Other Govt Programs	1,795	88.2	43	2.1	87	4.3	109	5.4	2,034
Medi-Cal	62,539	83.3	2,060	2.7	7,514	10.0	2,948	3.9	75,061
Self Pay	2,295	76.2	122	4.1	343	11.4	252	8.4	3,012
Other/Unknown	3,644	87.1	92	2.2	243	5.8	204	4.9	4,183
<b>Total</b>	<b>119,111</b>	<b>85.3</b>	<b>3,636</b>	<b>2.6</b>	<b>10,806</b>	<b>7.7</b>	<b>6,126</b>	<b>4.4</b>	<b>139,679</b>

Note: Numbers fewer than 5 are shown as "<5". Rates are not calculated (N/C) if number is fewer than five.  
Source: California Department of Public Health, Center for Health Statistics, OHIR Vital Statistics Section, 2009



**TITLE V INDICATOR TEMPLATE**

**INDICATOR:** Percent of Total Live Births by Adequacy of Prenatal Care Utilization (APNCU) Index

**DEFINITION:** The percent of live born infants whose mothers received adequate prenatal care as defined by the Adequacy of Prenatal Care Utilization Index (APNCU) developed by Milton Kotelchuck. This index does not assess the quality of the prenatal care that is delivered.

**NUMERATOR:** The number of live births to women who received adequate care, as defined by the APNCU criteria, by place of residence, in a calendar year

**DENOMINATOR:** The total number of live births, by place of residence, in a calendar year

**HEALTHY PEOPLE 2010 OBJECTIVE:**  
 Increase the proportion of all pregnant women who receive early and adequate prenatal care to 90 percent of live births.  
 (Baseline: 74 percent of live births in 1998) (Objective 16-6b)

**HEALTHY PEOPLE 2020 OBJECTIVE:**  
 Increase the proportion of pregnant women who receive early and adequate prenatal care to 77.6 percent of live births.  
 (Baseline: 70.5 percent of pregnant women in 2007) (Objective MICH-10.2)

**RISK FACTORS:** **Inadequate Prenatal Care**  
 Low income; young maternal age/teen pregnancy; low maternal education level; race/ethnicity (African American, Hispanic, American Indian/Alaskan Native); high parity; maternal substance abuse; lack of health insurance; lack of obstetric providers

Year	California				Los Angeles County			
	Adequate Prenatal Care		95% Confidence Interval		Adequate Prenatal Care		95% Confidence Interval	
	Number	Percent	Lower	Upper	Number	Percent	Lower	Upper
2000	436,261	82.1	82.0	82.2	132,139	84.0	83.8	84.1
2001	437,754	83.0	82.9	83.1	129,516	84.4	84.2	84.5
2002	442,146	83.5	83.4	83.6	128,984	85.3	85.1	85.5
2003	455,424	84.2	84.1	84.3	132,229	86.9	86.7	87.1
2004	459,050	84.3	84.2	84.4	132,531	87.5	87.3	87.6
2005	469,208	85.5	85.4	85.6	134,611	89.5	89.4	89.7
2006	480,255	85.4	85.3	85.5	135,961	89.5	89.4	89.7
2007	NA	N/A	N/A	N/A	130,333	85.9	85.7	86.0
2008	N/A	N/A	N/A	N/A	124,381	84.2	84.0	84.4
2009	N/A	N/A	N/A	N/A	119,111	85.3	85.1	85.5

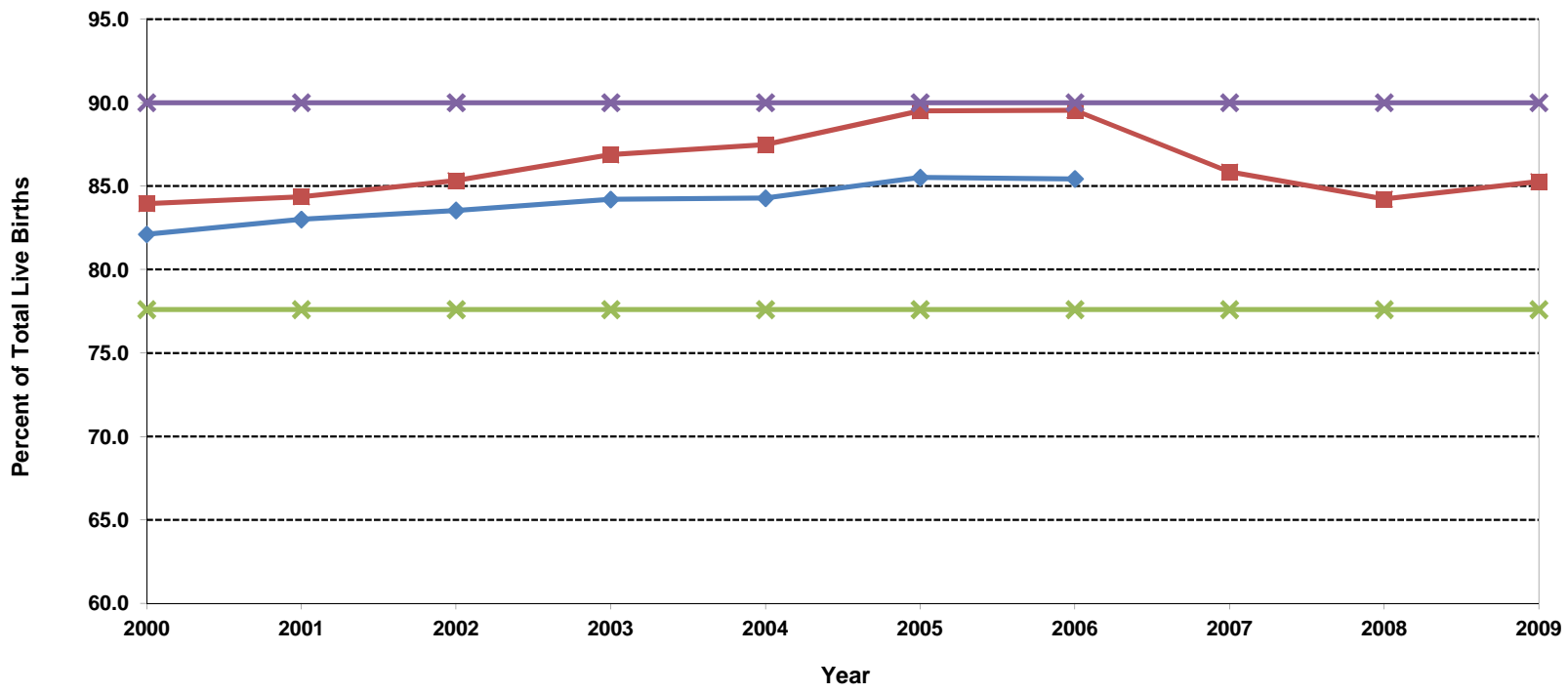
Denominator: Live Births		
Year	California	LA County
2000	531,285	157,391
2001	527,371	153,523
2002	529,245	151,167
2003	540,827	152,192
2004	544,685	151,504
2005	548,700	150,377
2006	562,157	151,837
2007	567,527	151,813
2008	551,567	147,684
2009	526,774	139,679

Note: The APNCU Index measures prenatal care utilization, which includes consideration of the month prenatal care began and the number of prenatal care visits during the time mothers actually received prenatal care. This utilization index is based on the recommendations established by the American College of Obstetrics and Gynecologists (ACOG). Appendix A contains the specific criteria for timing and number of prenatal care visits that are used to assign adequacy categories. Due to the change in methodology for calculating the Kotelchuck Index, data presented may not be comparable to those published in previous FHOP reports.  
 N/A: 2007 - 2009 data for California not available for retrieval

Source: California Department of Public Health, Center for Health Statistics, OHIR Vital Statistics Section, 2000-2009.

**Percent of Total Live Births with "Adequate" Prenatal Care  
as Rated by Kotelchuck (APNCU) Index  
California vs. Los Angeles County, 2000-2009**

California Los Angeles County Health People 2010 Health People 2020



Year 2010 Objective: Increase the proportion of pregnant women who receive early and adequate prenatal care to 90 percent of live births.

Year 2020 Objective: Increase the proportion of pregnant women who receive early and adequate prenatal care to 77.6 percent of live births.

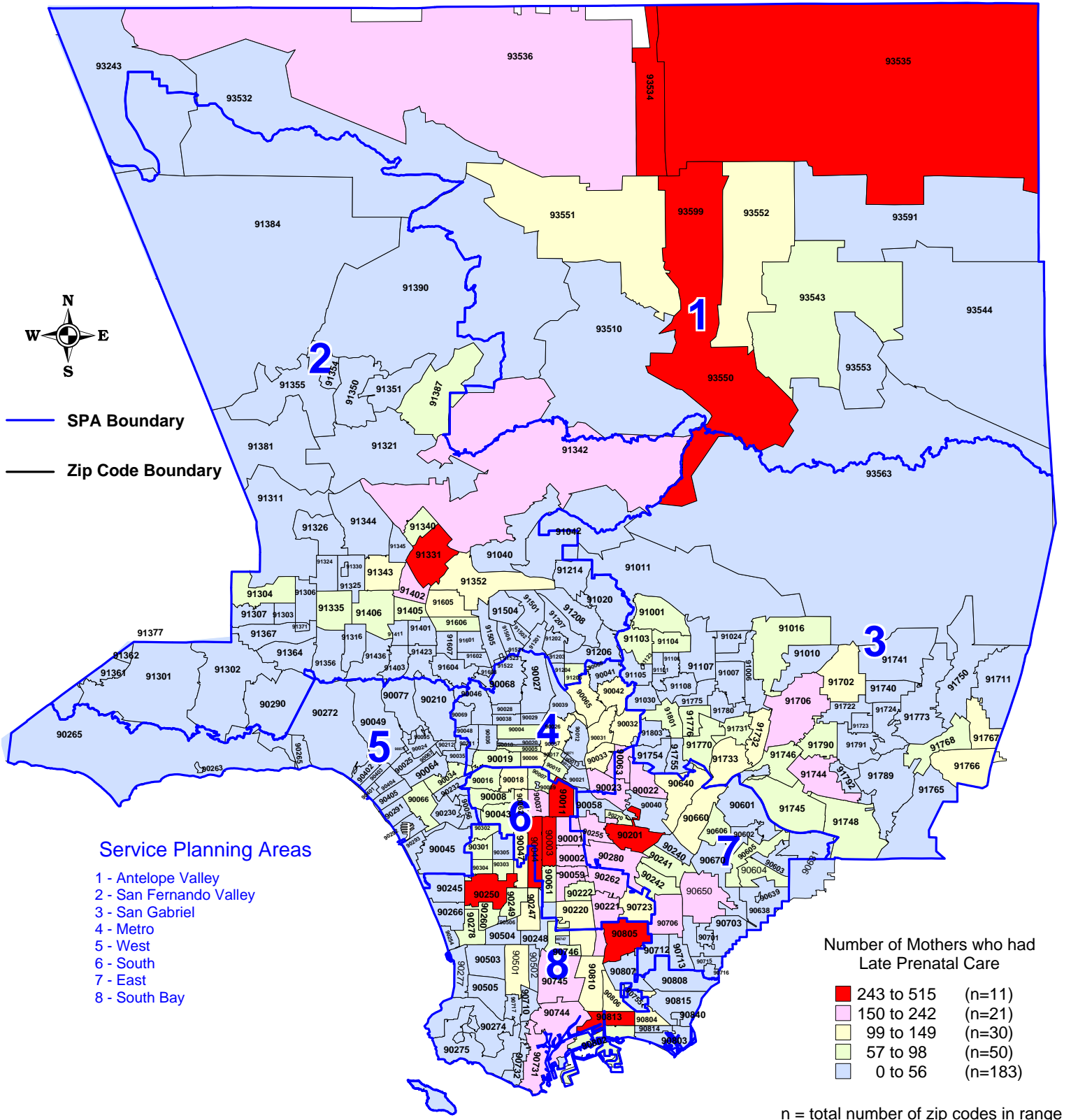
Note: The APNCU Index measures prenatal care utilization, which includes consideration of the month prenatal care began and the number of prenatal care visits during the time mothers actually received prenatal care. This utilization index is based on the recommendations established by the American College of Obstetrics and Gynecologists (ACOG). Appendix A contains the specific criteria for timing and number of prenatal care visits that are used to assign adequacy categories.

Due to the change in methodology for calculating the Kotelchuck Index, data presented may not be comparable to those published in previous FHOP reports.

Source: California Department of Public Health, Center for Health Statistics, OHIR Vital Statistics Section, 2000-2009.

# Number of Mothers who had Late Prenatal Care by Zip Code\* and Service Planning Area (SPA)

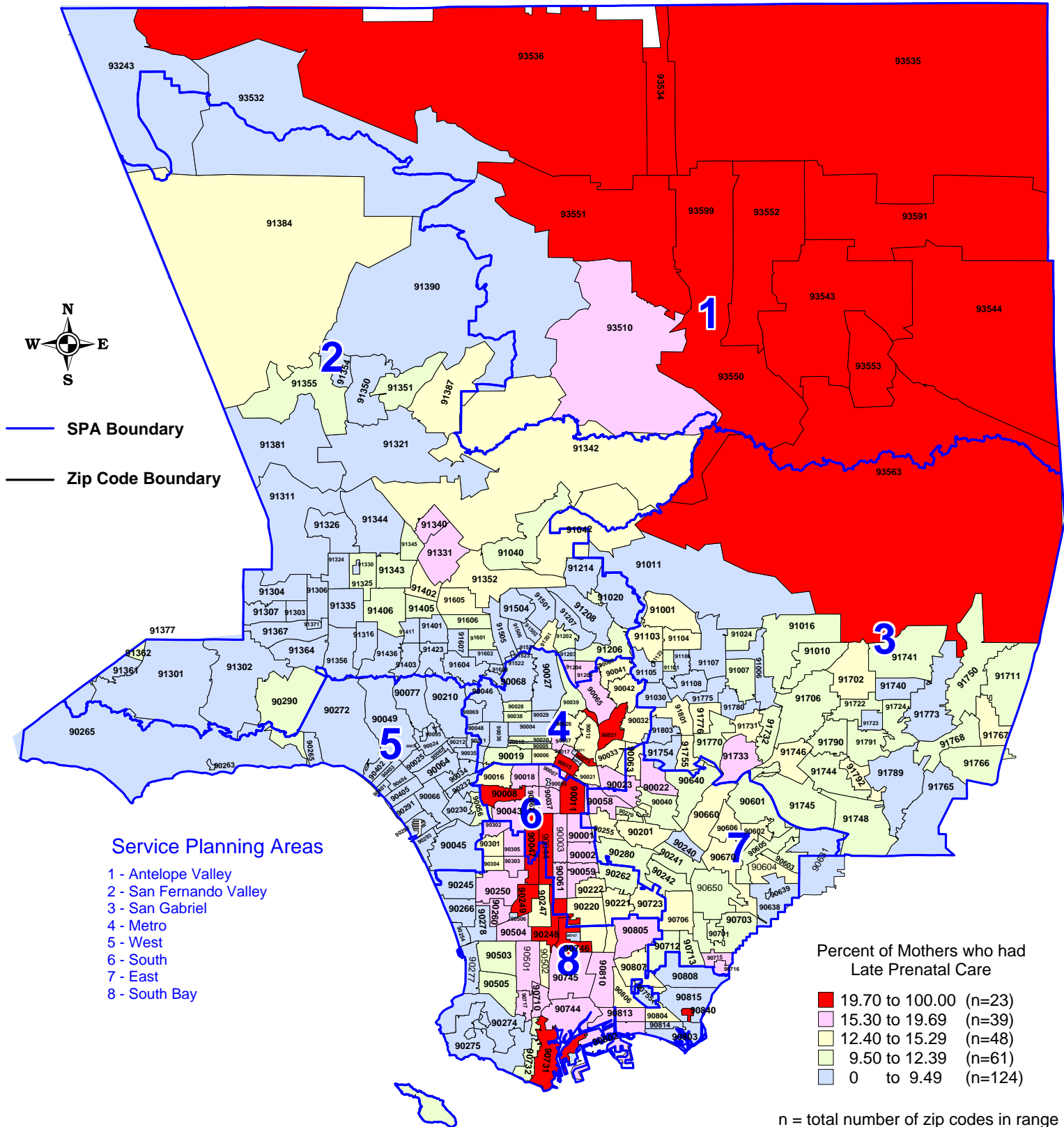
Los Angeles County, 2009



\*Los Angeles County zip code boundaries as of April 2007  
 Total number of live births in Los Angeles County, 2009 = 139,679  
 Note: Prenatal care that begins in the second or third trimester is considered late.  
 Source: California Department of Public Health, Center for Health Statistics, OHIR Vital Statistics Section, 2009.

# Percent of Mothers who had Late Prenatal Care by Zip Code\* and Service Planning Area (SPA)

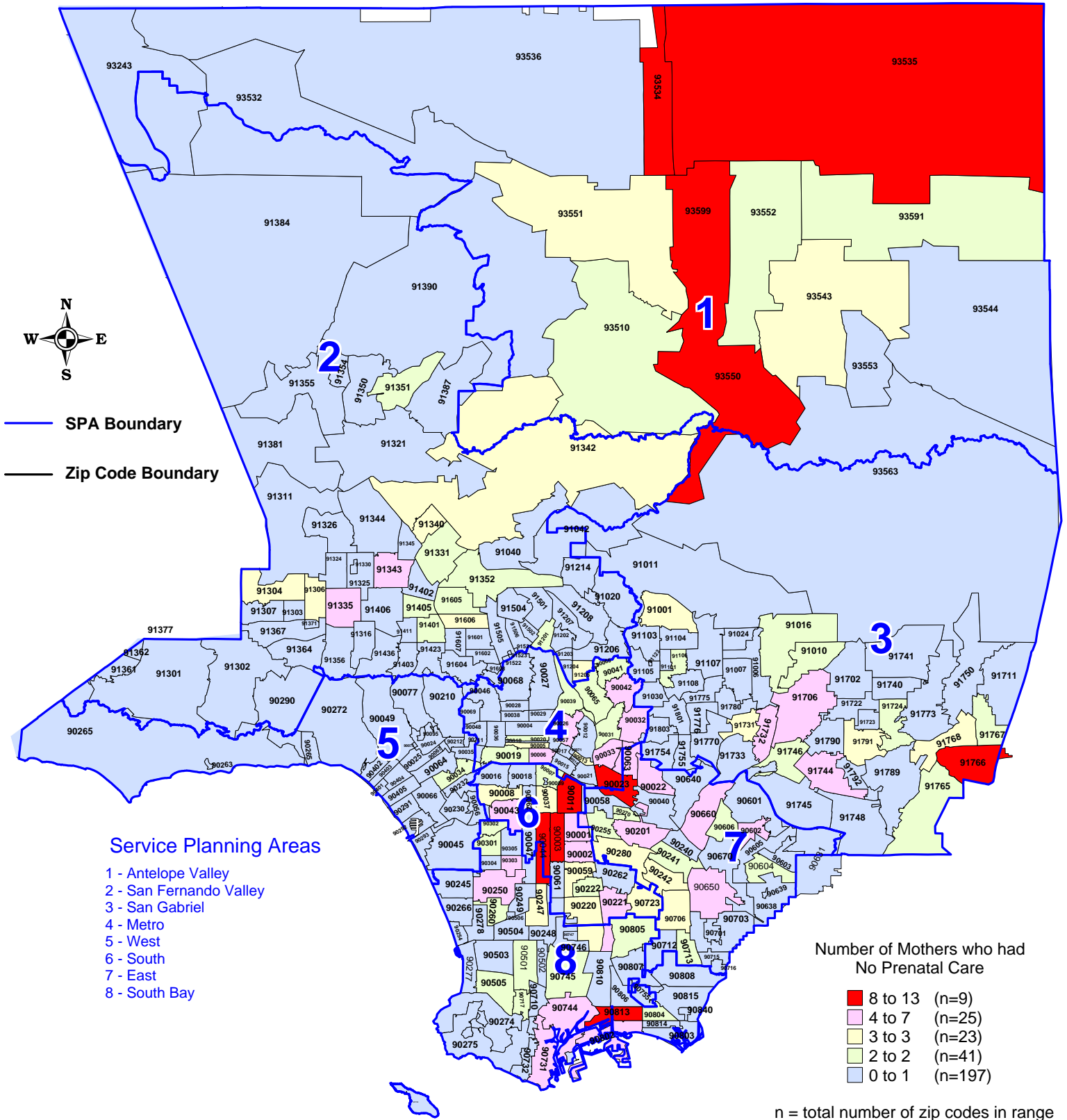
Los Angeles County, 2009



\*Los Angeles County zip code boundaries as of April 2007  
 Total number of live births in Los Angeles County, 2009 = 139,679  
 Note: Prenatal care that begins in the second or third trimester is considered late.  
 Source: California Department of Public Health, Center for Health Statistics, OHIR Vital Statistics Section, 2009.

# Number of Mothers who had No Prenatal Care by Zip Code\* and Service Planning Area (SPA)

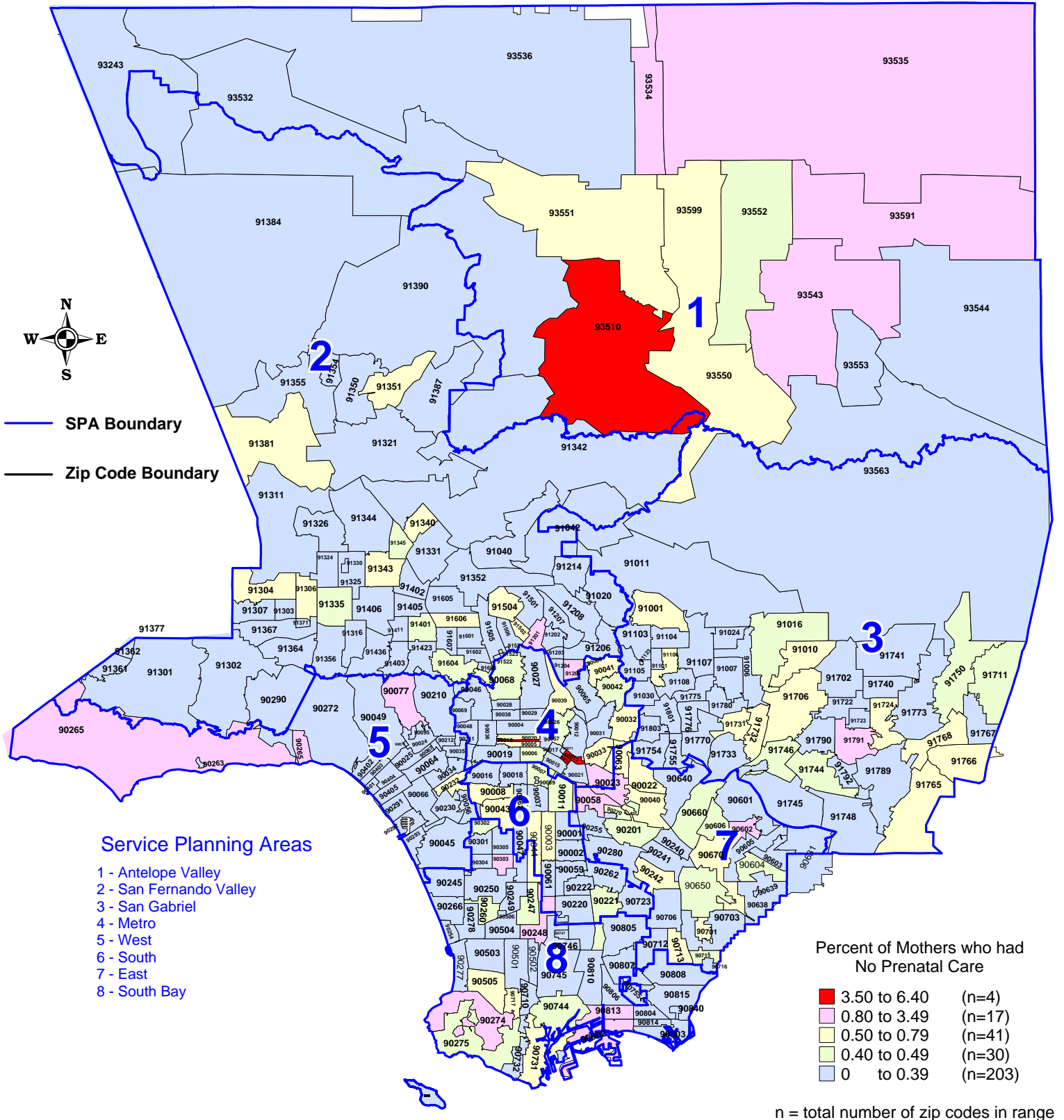
Los Angeles County, 2009



\*Los Angeles County zip code boundaries as of April 2007  
 Total number of live births in Los Angeles County, 2009 = 139,679  
 Source: California Department of Public Health, Center for Health Statistics, OHIR Vital Statistics Section, 2009.

# Percent of Mothers who had No Prenatal Care by Zip Code\* and Service Planning Area (SPA)

Los Angeles County, 2009



\*Los Angeles County zip code boundaries as of April 2007  
 Total number of live births in Los Angeles County, 2009 = 139,679  
 Source: California Department of Public Health, Center for Health Statistics, OHIR Vital Statistics Section, 2009.



Los Angeles County - Department of Public Health  
**Entry Into Prenatal Care (PNC) By Zip Code\***  
 Los Angeles County, 2009

Mother's Residential Zip Code	Mother's Trimester Prenatal Care Began										Total Live Births
	No Prenatal Care		First Trimester		Second Trimester		Third Trimester		Unknown		
	Number	Percent	Number	Percent	Number	Percent	Number	Percent	Number	Percent	
Missing	15	4.1	234	63.6	42	11.4	20	5.4	57	15.5	368
90001	<5	**	1,054	81.5	165	12.8	49	3.8	21	1.6	1,293
90002	<5	**	941	80.7	164	14.1	36	3.1	21	1.8	1,166
90003	9	0.6	1,240	76.7	244	15.1	71	4.4	53	3.3	1,617
90004	<5	**	748	88.7	58	6.9	14	1.7	22	2.6	843
90005	<5	**	528	88.2	49	8.2	9	1.5	10	1.7	599
90006	<5	**	884	83.6	101	9.6	34	3.2	34	3.2	1,057
90007	<5	**	375	78.0	62	12.9	21	4.4	21	4.4	481
90008	<5	**	284	70.1	67	16.5	18	4.4	33	8.2	405
90010	<5	**	25	86.2	<5	**	<5	**	<5	**	29
90011	11	0.4	1,930	76.4	404	16.0	111	4.4	70	2.8	2,526
90012	<5	**	206	83.4	26	10.5	6	2.4	9	3.6	247
90013	<5	**	31	66.0	7	14.9	<5	**	<5	**	47
90014	<5	**	23	85.2	<5	**	<5	**	<5	**	27
90015	<5	**	225	76.3	48	16.3	10	3.4	11	3.7	295
90016	<5	**	582	78.0	78	10.5	18	2.4	67	9.0	746
90017	<5	**	357	82.6	53	12.3	16	3.7	5	1.2	432
90018	<5	**	583	78.7	97	13.1	19	2.6	41	5.5	741
90019	<5	**	708	83.1	82	9.6	15	1.8	45	5.3	852
90020	<5	**	476	88.0	44	8.1	9	1.7	10	1.9	541
90021	<5	**	18	85.7	<5	**	<5	**	<5	**	21
90022	6	0.5	1,040	80.8	177	13.8	33	2.6	31	2.4	1,287
90023	8	0.8	770	80.0	142	14.8	26	2.7	17	1.8	963
90024	<5	**	194	80.5	12	5.0	<5	**	35	14.5	241
90025	<5	**	506	91.7	21	3.8	<5	**	23	4.2	552
90026	<5	**	765	83.4	113	12.3	20	2.2	15	1.6	917
90027	<5	**	410	89.9	33	7.2	5	1.1	8	1.8	456
90028	<5	**	182	86.7	15	7.1	7	3.3	6	2.9	210
90029	<5	**	465	90.5	36	7.0	6	1.2	7	1.4	514
90031	<5	**	480	77.1	108	17.3	26	4.2	7	1.1	623
90032	<5	**	541	81.1	92	13.8	9	1.4	21	3.2	667
90033	7	0.7	788	82.7	108	11.3	30	3.2	20	2.1	953
90034	<5	**	635	83.7	57	7.5	11	1.5	54	7.1	759
90035	<5	**	369	82.2	13	2.9	<5	**	64	14.3	449
90036	<5	**	439	84.3	20	3.8	5	1.0	57	10.9	521
90037	<5	**	1,009	78.2	171	13.3	52	4.0	56	4.3	1,291
90038	<5	**	288	84.5	35	10.3	7	2.1	11	3.2	341
90039	<5	**	309	86.3	29	8.1	5	1.4	13	3.6	358
90040	<5	**	186	87.3	19	8.9	<5	**	<5	**	213
90041	<5	**	246	83.7	36	12.2	7	2.4	<5	**	294
90042	<5	**	811	83.9	121	12.5	16	1.7	15	1.6	967
90043	<5	**	435	76.3	74	13.0	20	3.5	37	6.5	570
90044	13	0.7	1,421	76.3	302	16.2	68	3.7	58	3.1	1,862
90045	<5	**	381	89.0	23	5.4	6	1.4	18	4.2	428
90046	<5	**	282	83.7	17	5.0	<5	**	34	10.1	337
90047	<5	**	533	78.2	107	15.7	27	4.0	15	2.2	682
90048	<5	**	224	87.8	10	3.9	<5	**	20	7.8	255
90049	<5	**	326	92.1	5	1.4	<5	**	21	5.9	354
90056	<5	**	45	80.4	6	10.7	<5	**	5	8.9	56
90057	<5	**	653	81.1	110	13.7	26	3.2	15	1.9	805
90058	<5	**	56	77.8	8	11.1	<5	**	<5	**	72
90059	<5	**	747	80.6	130	14.0	26	2.8	21	2.3	927
90061	<5	**	464	82.1	75	13.3	18	3.2	8	1.4	565

Los Angeles County - Department of Public Health  
**Entry Into Prenatal Care (PNC) By Zip Code\***  
 Los Angeles County, 2009

Mother's Residential Zip Code	Mother's Trimester Prenatal Care Began										Total Live Births
	No Prenatal Care		First Trimester		Second Trimester		Third Trimester		Unknown		
	Number	Percent	Number	Percent	Number	Percent	Number	Percent	Number	Percent	
90062	<5	**	422	75.9	89	16.0	16	2.9	28	5.0	556
90063	5	0.5	908	82.8	134	12.2	33	3.0	17	1.6	1,097
90064	<5	**	285	89.1	12	3.8	2	0.6	21	6.6	320
90065	<5	**	522	82.2	95	15.0	11	1.7	5	0.8	635
90066	<5	**	798	88.8	55	6.1	10	1.1	35	3.9	899
90067	<5	**	12	70.6	<5	**	<5	**	<5	**	17
90068	<5	**	202	89.0	5	2.2	<5	**	18	7.9	227
90069	<5	**	113	85.6	<5	**	<5	**	14	10.6	132
90071	<5	**	<5	**	<5	**	<5	**	<5	**	2
90073	<5	**	<5	**	<5	**	<5	**	<5	**	1
90077	<5	**	77	89.5	<5	**	<5	**	8	9.3	86
90201	7	0.4	1,574	84.3	219	11.7	44	2.4	23	1.2	1,867
90210	<5	**	152	80.0	6	3.2	<5	**	32	16.8	190
90211	<5	**	62	81.6	5	6.6	<5	**	9	11.8	76
90212	<5	**	81	83.5	5	5.2	<5	**	10	10.3	97
90220	<5	**	763	82.9	101	11.0	22	2.4	31	3.4	920
90221	5	0.4	1,068	84.6	132	10.5	29	2.3	29	2.3	1,263
90222	<5	**	582	84.8	73	10.6	16	2.3	13	1.9	686
90230	<5	**	307	85.3	21	5.8	9	2.5	23	6.4	360
90232	<5	**	147	92.5	<5	**	<5	**	6	3.8	159
90240	<5	**	289	90.3	23	7.2	5	1.6	<5	**	320
90241	<5	**	532	87.6	55	9.1	5	0.8	13	2.1	607
90242	<5	**	534	89.2	45	7.5	13	2.2	<5	**	599
90245	<5	**	149	90.3	9	5.5	<5	**	6	3.6	165
90247	<5	**	622	83.8	93	12.5	14	1.9	10	1.4	742
90248	<5	**	103	76.9	23	17.2	7	5.2	<5	**	134
90249	<5	**	276	79.3	57	16.4	12	3.5	<5	**	348
90250	<5	**	1,283	79.7	246	15.3	54	3.4	23	1.4	1,610
90254	<5	**	199	90.9	14	6.4	<5	**	6	2.7	219
90255	<5	**	1,166	84.0	157	11.3	37	2.7	26	1.9	1,388
90260	<5	**	413	81.3	63	12.4	24	4.7	6	1.2	508
90262	<5	**	1,286	87.4	138	9.4	29	2.0	17	1.2	1,471
90263	<5	**	<5	**	<5	**	<5	**	<5	**	2
90265	<5	**	112	90.3	<5	**	<5	**	<5	**	124
90266	<5	**	310	91.2	12	3.5	<5	**	18	5.3	340
90270	<5	**	450	87.0	49	9.5	9	1.7	7	1.4	517
90272	<5	**	160	90.4	5	2.8	<5	**	11	6.2	177
90274	<5	**	108	91.5	7	5.9	<5	**	<5	**	118
90275	<5	**	201	87.8	16	7.0	5	2.2	6	2.6	229
90277	<5	**	332	90.7	27	7.4	<5	**	<5	**	366
90278	<5	**	576	89.0	53	8.2	5	0.8	12	1.9	647
90280	<5	**	1,483	87.3	163	9.6	30	1.8	19	1.1	1,698
90290	<5	**	51	83.6	7	11.5	<5	**	<5	**	61
90291	<5	**	272	87.5	18	5.8	<5	**	17	5.5	311
90292	<5	**	206	88.0	12	5.1	5	2.1	11	4.7	234
90293	<5	**	123	89.1	9	6.5	<5	**	5	3.6	138
90301	<5	**	470	80.9	73	12.6	15	2.6	21	3.6	581
90302	<5	**	363	77.2	72	15.3	17	3.6	16	3.4	470
90303	<5	**	363	79.3	65	14.2	12	2.6	14	3.1	458
90304	<5	**	500	84.3	70	11.8	14	2.4	8	1.4	593
90305	<5	**	119	76.8	25	16.1	<5	**	9	5.8	155
90401	<5	**	35	85.4	<5	**	<5	**	<5	**	41



Los Angeles County - Department of Public Health  
**Entry Into Prenatal Care (PNC) By Zip Code\***  
 Los Angeles County, 2009

Mother's Residential Zip Code	Mother's Trimester Prenatal Care Began										Total Live Births
	No Prenatal Care		First Trimester		Second Trimester		Third Trimester		Unknown		
	Number	Percent	Number	Percent	Number	Percent	Number	Percent	Number	Percent	
90402	<5	**	100	90.1	<5	**	<5	**	7	6.3	111
90403	<5	**	259	91.8	8	2.8	<5	**	14	5.0	282
90404	<5	**	181	87.4	11	5.3	<5	**	12	5.8	207
90405	<5	**	220	90.2	6	2.5	<5	**	15	6.2	244
90501	<5	**	511	82.3	87	14.0	12	1.9	9	1.5	621
90502	<5	**	228	84.4	35	13.0	<5	**	<5	**	270
90503	<5	**	382	89.7	39	9.2	<5	**	<5	**	426
90504	<5	**	259	83.0	43	13.8	5	1.6	<5	**	312
90505	<5	**	283	86.0	34	10.3	5	1.5	5	1.5	329
90601	<5	**	346	85.9	39	9.7	6	1.5	12	3.0	403
90602	<5	**	308	81.5	44	11.6	12	3.2	10	2.7	378
90603	<5	**	179	89.1	18	9.0	<5	**	<5	**	201
90604	<5	**	457	85.1	64	11.9	<5	**	10	1.9	537
90605	<5	**	506	86.6	53	9.1	8	1.4	16	2.7	584
90606	<5	**	391	84.5	49	10.6	9	1.9	12	2.6	463
90631	<5	**	24	96.0	<5	**	<5	**	<5	**	25
90638	<5	**	463	89.7	42	8.1	<5	**	8	1.6	516
90639	<5	**	<5	**	<5	**	<5	**	<5	**	1
90640	<5	**	769	85.8	88	9.8	17	1.9	21	2.3	896
90650	6	0.4	1,380	86.5	159	10.0	31	1.9	20	1.3	1,596
90660	<5	**	783	85.1	101	11.0	14	1.5	18	2.0	920
90670	<5	**	140	82.4	22	12.9	<5	**	5	2.9	170
90701	<5	**	172	85.6	21	10.5	<5	**	5	2.5	201
90703	<5	**	316	86.6	31	8.5	5	1.4	13	3.6	365
90704	<5	**	41	78.9	5	9.6	<5	**	5	9.6	52
90706	<5	**	964	81.1	137	11.5	43	3.6	41	3.5	1,188
90710	<5	**	289	83.3	45	13.0	9	2.6	<5	**	347
90712	<5	**	306	85.0	34	9.4	5	1.4	14	3.9	360
90713	<5	**	290	86.3	30	8.9	<5	**	12	3.6	336
90715	<5	**	220	78.6	47	16.8	<5	**	8	2.9	280
90716	<5	**	250	82.0	44	14.4	9	3.0	<5	**	305
90717	<5	**	220	79.1	42	15.1	7	2.5	7	2.5	278
90723	<5	**	805	82.6	122	12.5	21	2.2	24	2.5	975
90731	<5	**	691	77.6	159	17.9	25	2.8	12	1.4	891
90732	<5	**	204	88.7	21	9.1	<5	**	<5	**	230
90744	<5	**	847	79.8	158	14.9	34	3.2	18	1.7	1,061
90745	<5	**	600	78.1	129	16.8	21	2.7	16	2.1	768
90746	<5	**	238	76.5	49	15.8	13	4.2	11	3.5	311
90802	5	1.0	390	77.4	71	14.1	12	2.4	26	5.2	504
90803	<5	**	227	88.7	11	4.3	<5	**	15	5.9	256
90804	<5	**	531	80.6	73	11.1	26	4.0	27	4.1	659
90805	<5	**	1,342	78.3	243	14.2	38	2.2	90	5.3	1,715
90806	<5	**	788	79.5	128	12.9	21	2.1	53	5.4	991
90807	<5	**	313	80.9	41	10.6	7	1.8	25	6.5	387
90808	<5	**	352	87.1	26	6.4	<5	**	22	5.5	404
90810	<5	**	451	75.7	94	15.8	18	3.0	32	5.4	596
90813	10	0.8	946	74.8	208	16.5	40	3.2	60	4.8	1,264
90814	<5	**	158	87.8	15	8.3	<5	**	5	2.8	180
90815	<5	**	331	88.7	20	5.4	<5	**	19	5.1	373
90840	<5	**	<5	**	<5	**	<5	**	<5	**	3
91001	<5	**	340	78.0	61	14.0	5	1.2	27	6.2	436
91006	<5	**	263	89.5	14	4.8	<5	**	13	4.4	294
91007	<5	**	270	83.9	32	9.9	6	1.9	14	4.4	322

Los Angeles County - Department of Public Health  
**Entry Into Prenatal Care (PNC) By Zip Code\***  
 Los Angeles County, 2009

Mother's Residential Zip Code	Mother's Trimester Prenatal Care Began										Total Live Births
	No Prenatal Care		First Trimester		Second Trimester		Third Trimester		Unknown		
	Number	Percent	Number	Percent	Number	Percent	Number	Percent	Number	Percent	
91010	<5	**	328	87.7	33	8.8	5	1.3	6	1.6	374
91011	<5	**	88	96.7	<5	**	<5	**	<5	**	91
91016	<5	**	431	83.9	58	11.3	<5	**	19	3.7	514
91020	<5	**	73	88.0	8	9.6	<5	**	<5	**	83
91024	<5	**	78	83.9	11	11.8	<5	**	<5	**	93
91030	<5	**	214	88.8	17	7.1	<5	**	9	3.7	241
91040	<5	**	173	86.9	20	10.1	<5	**	<5	**	199
91042	<5	**	245	85.4	35	12.2	<5	**	<5	**	287
91101	<5	**	262	85.3	25	8.1	5	1.6	14	4.6	307
91103	<5	**	355	80.1	53	12.0	8	1.8	26	5.9	443
91104	<5	**	425	82.1	60	11.6	8	1.5	24	4.6	518
91105	<5	**	105	88.2	<5	**	<5	**	9	7.6	119
91106	<5	**	293	87.5	23	6.9	<5	**	16	4.8	335
91107	<5	**	375	90.6	24	5.8	5	1.2	10	2.4	414
91108	<5	**	85	95.5	<5	**	<5	**	<5	**	89
91201	<5	**	190	84.4	29	12.9	<5	**	<5	**	225
91202	<5	**	222	89.2	24	9.6	<5	**	<5	**	249
91203	<5	**	130	92.9	8	5.7	<5	**	<5	**	140
91204	<5	**	156	82.5	25	13.2	6	3.2	<5	**	189
91205	<5	**	322	80.9	60	15.1	10	2.5	<5	**	398
91206	<5	**	293	87.5	29	8.7	9	2.7	<5	**	335
91207	<5	**	95	95.0	<5	**	<5	**	<5	**	100
91208	<5	**	127	89.4	11	7.8	<5	**	<5	**	142
91214	<5	**	204	93.6	11	5.1	<5	**	<5	**	218
91301	<5	**	204	95.8	6	2.8	<5	**	<5	**	213
91302	<5	**	170	91.4	7	3.8	<5	**	6	3.2	186
91303	<5	**	410	90.7	34	7.5	<5	**	<5	**	452
91304	<5	**	582	89.7	46	7.1	12	1.9	6	0.9	649
91306	<5	**	576	91.7	35	5.6	12	1.9	<5	**	628
91307	<5	**	149	90.9	11	6.7	<5	**	<5	**	164
91311	<5	**	328	91.6	23	6.4	<5	**	<5	**	358
91316	<5	**	291	89.5	17	5.2	<5	**	13	4.0	325
91321	<5	**	440	89.3	37	7.5	9	1.8	6	1.2	493
91324	<5	**	296	90.5	20	6.1	6	1.8	5	1.5	327
91325	<5	**	290	89.8	28	8.7	<5	**	<5	**	323
91326	<5	**	238	89.5	17	6.4	7	2.6	<5	**	266
91331	<5	**	1,488	83.9	221	12.5	51	2.9	12	0.7	1,774
91335	<5	**	901	91.0	67	6.8	13	1.3	5	0.5	990
91340	<5	**	500	83.5	75	12.5	18	3.0	<5	**	599
91342	<5	**	1,250	84.0	177	11.9	38	2.6	20	1.3	1,488
91343	5	0.5	867	87.1	89	8.9	22	2.2	12	1.2	995
91344	<5	**	453	90.4	36	7.2	8	1.6	<5	**	501
91345	<5	**	199	86.9	25	10.9	<5	**	<5	**	229
91350	<5	**	381	90.9	31	7.4	<5	**	<5	**	419
91351	<5	**	386	88.1	42	9.6	<5	**	<5	**	438
91352	<5	**	708	85.9	92	11.2	18	2.2	<5	**	824
91354	<5	**	276	90.2	19	6.2	7	2.3	<5	**	306
91355	<5	**	320	89.1	32	8.9	<5	**	<5	**	359
91356	<5	**	283	88.7	24	7.5	<5	**	9	2.8	319
91361	<5	**	24	100.0	<5	**	<5	**	<5	**	24
91362	<5	**	9	90.0	<5	**	<5	**	<5	**	10
91364	<5	**	229	92.3	11	4.4	<5	**	6	2.4	248

Los Angeles County - Department of Public Health  
**Entry Into Prenatal Care (PNC) By Zip Code\***  
 Los Angeles County, 2009

Mother's Residential Zip Code	Mother's Trimester Prenatal Care Began										Total Live Births
	No Prenatal Care		First Trimester		Second Trimester		Third Trimester		Unknown		
	Number	Percent	Number	Percent	Number	Percent	Number	Percent	Number	Percent	
91367	<5	**	399	91.3	25	5.7	11	2.5	<5	**	437
91381	<5	**	169	91.9	8	4.4	<5	**	<5	**	184
91384	<5	**	231	86.8	31	11.7	<5	**	<5	**	266
91387	<5	**	475	85.7	64	11.6	8	1.4	6	1.1	554
91390	<5	**	136	87.2	14	9.0	<5	**	6	3.9	156
91401	<5	**	495	89.0	45	8.1	5	0.9	9	1.6	556
91402	<5	**	1,116	86.4	133	10.3	34	2.6	7	0.5	1,291
91403	<5	**	262	89.7	13	4.5	<5	**	13	4.5	292
91405	<5	**	839	89.4	77	8.2	14	1.5	7	0.8	939
91406	<5	**	761	88.5	72	8.4	19	2.2	7	0.8	860
91411	<5	**	355	91.5	19	4.9	<5	**	10	2.6	388
91423	<5	**	315	89.0	19	5.4	<5	**	20	5.7	354
91436	<5	**	124	92.5	<5	**	<5	**	7	5.2	134
91501	<5	**	228	93.1	13	5.3	<5	**	<5	**	245
91502	<5	**	123	89.8	11	8.0	<5	**	<5	**	137
91504	<5	**	194	90.7	16	7.5	<5	**	<5	**	214
91505	<5	**	308	92.2	18	5.4	<5	**	7	2.1	334
91506	<5	**	170	92.9	10	5.5	<5	**	<5	**	183
91601	<5	**	398	89.0	35	7.8	8	1.8	5	1.1	447
91602	<5	**	166	94.9	6	3.4	<5	**	<5	**	175
91604	<5	**	267	93.0	7	2.4	<5	**	10	3.5	287
91605	<5	**	780	85.4	104	11.4	17	1.9	10	1.1	913
91606	<5	**	543	88.7	51	8.3	7	1.1	8	1.3	612
91607	<5	**	280	89.2	17	5.4	<5	**	14	4.5	314
91702	<5	**	812	82.7	106	10.8	34	3.5	29	3.0	982
91706	7	0.5	1,235	87.1	133	9.4	20	1.4	23	1.6	1,418
91711	<5	**	206	86.2	25	10.5	<5	**	5	2.1	239
91722	<5	**	443	87.4	48	9.5	7	1.4	8	1.6	507
91723	<5	**	233	90.0	18	7.0	<5	**	<5	**	259
91724	<5	**	245	88.1	26	9.4	<5	**	<5	**	278
91731	<5	**	410	83.7	57	11.6	8	1.6	12	2.5	490
91732	7	0.6	933	83.5	113	10.1	19	1.7	46	4.1	1,118
91733	<5	**	675	81.4	113	13.6	15	1.8	25	3.0	829
91740	<5	**	223	89.9	14	5.7	8	3.2	<5	**	248
91741	<5	**	166	87.8	22	11.6	<5	**	<5	**	189
91744	6	0.4	1,322	86.8	153	10.1	21	1.4	21	1.4	1,523
91745	<5	**	590	84.4	61	8.7	15	2.2	32	4.6	699
91746	<5	**	411	84.1	57	11.7	9	1.8	10	2.0	489
91748	<5	**	554	83.6	61	9.2	17	2.6	30	4.5	663
91750	<5	**	212	86.5	25	10.2	<5	**	<5	**	245
91754	<5	**	299	87.4	22	6.4	<5	**	18	5.3	342
91755	<5	**	244	82.2	34	11.5	<5	**	15	5.1	297
91765	<5	**	400	89.1	34	7.6	5	1.1	8	1.8	449
91766	9	0.7	1,156	85.6	118	8.7	20	1.5	47	3.5	1,350
91767	<5	**	720	83.9	94	11.0	12	1.4	30	3.5	858
91768	<5	**	533	85.0	59	9.4	10	1.6	22	3.5	627
91770	<5	**	648	80.4	71	8.8	15	1.9	72	8.9	806
91773	<5	**	265	91.1	22	7.6	<5	**	<5	**	291

Los Angeles County - Department of Public Health  
**Entry Into Prenatal Care (PNC) By Zip Code\***  
 Los Angeles County, 2009

Mother's Residential Zip Code	Mother's Trimester Prenatal Care Began										Total Live Births
	No Prenatal Care		First Trimester		Second Trimester		Third Trimester		Unknown		
	Number	Percent	Number	Percent	Number	Percent	Number	Percent	Number	Percent	
91775	<5	**	227	84.7	16	6.0	<5	**	21	7.8	268
91776	<5	**	379	80.8	52	11.1	7	1.5	31	6.6	469
91780	<5	**	286	84.9	25	7.4	6	1.8	20	5.9	337
91789	<5	**	282	89.0	21	6.6	5	1.6	8	2.5	317
91790	<5	**	527	89.0	51	8.6	6	1.0	7	1.2	592
91791	<5	**	320	84.2	38	10.0	<5	**	15	4.0	380
91792	<5	**	385	85.2	46	10.2	10	2.2	10	2.2	452
91801	<5	**	489	82.3	67	11.3	10	1.7	27	4.6	594
91803	<5	**	321	88.0	26	7.1	<5	**	15	4.1	365
93243	<5	**	<5	**	<5	**	<5	**	<5	**	1
93510	<5	**	40	75.5	8	15.1	<5	**	<5	**	53
93532	<5	**	20	90.9	<5	**	<5	**	<5	**	22
93534	8	1.1	472	65.1	216	29.8	27	3.7	<5	**	725
93535	10	0.8	842	64.6	393	30.2	51	3.9	7	0.5	1,303
93536	<5	**	635	75.3	186	22.1	18	2.1	<5	**	843
93543	<5	**	121	63.4	60	31.4	7	3.7	<5	**	191
93544	<5	**	7	77.8	<5	**	<5	**	<5	**	9
93550	10	0.7	923	65.2	423	29.9	52	3.7	8	0.6	1,416
93551	<5	**	432	76.5	116	20.5	13	2.3	<5	**	565
93552	<5	**	401	72.3	127	22.9	22	4.0	<5	**	555
93553	<5	**	17	77.3	5	22.7	<5	**	<5	**	22
93563	<5	**	<5	**	<5	**	<5	**	<5	**	1
93591	<5	**	59	51.8	44	38.6	9	7.9	<5	**	114
<b>Total</b>	<b>440</b>		<b>116,717</b>		<b>15,666</b>		<b>3,014</b>		<b>3,842</b>		<b>139,679</b>

Note: "Trimester Prenatal Care Began" excludes the prenatal care experiences of all women whose pregnancies did not result in a live birth.

\*\* Results not calculated if less than 5 cases

Source: California Department of Public Health, Center for Health Statistics, OHIR Vital Statistics Section, 2009