

Prenatal Care

TITLE V INDICATOR TEMPLATE

INDICATOR: First Trimester Onset of Prenatal Care (PNC)

DEFINITION: The percent of live born infants whose mothers received prenatal care in the first trimester of pregnancy

NUMERATOR: The number of live births to women who received prenatal care during the first trimester, by place of residence, in a calendar year

DENOMINATOR: The total number of live births, by place of residence, in a calendar year

HEALTHY PEOPLE 2010 OBJECTIVE:

Increase the proportion of pregnant women who receive prenatal care in the first trimester of pregnancy to 90 percent of live births.
(Baseline: 83 percent of live births in 1998) (Objective 16-6a)

RISK FACTORS:

For not obtaining early prenatal care Low income; young maternal age/teen pregnancy; low maternal education level; race/ethnicity (African American, Hispanic, American Indian/Alaska Native); high parity; maternal substance abuse; lack of health insurance; lack of obstetric providers

Year	California				Los Angeles County			
	First Trimester Prenatal Care		95% Confidence Interval		First Trimester Prenatal Care		95% Confidence Interval	
	Number	Percent	Lower	Upper	Number	Percent	Lower	Upper
1999	426,013	82.2	82.1	82.3	132,669	85.0	84.8	85.1
2000	441,712	83.1	83.0	83.2	135,356	86.0	85.8	86.2
2001	442,936	84.0	83.9	84.1	132,776	86.5	86.3	86.7
2002	448,955	84.8	84.7	84.9	132,493	87.6	87.5	87.8
2003	464,156	85.8	85.7	85.9	136,609	89.8	89.6	89.9
2004	466,463	85.6	85.5	85.7	136,144	89.9	89.7	90.0
2005	470,955	85.8	85.7	85.9	136,020	90.5	90.3	90.6
2006	478,973	85.2	85.1	85.3	137,077	90.3	90.1	90.4
2007	459,188	80.9	80.8	81.0	129,741	85.5	85.3	85.6
2008	445,108	80.5	80.4	80.6	123,251	83.5	83.3	83.6

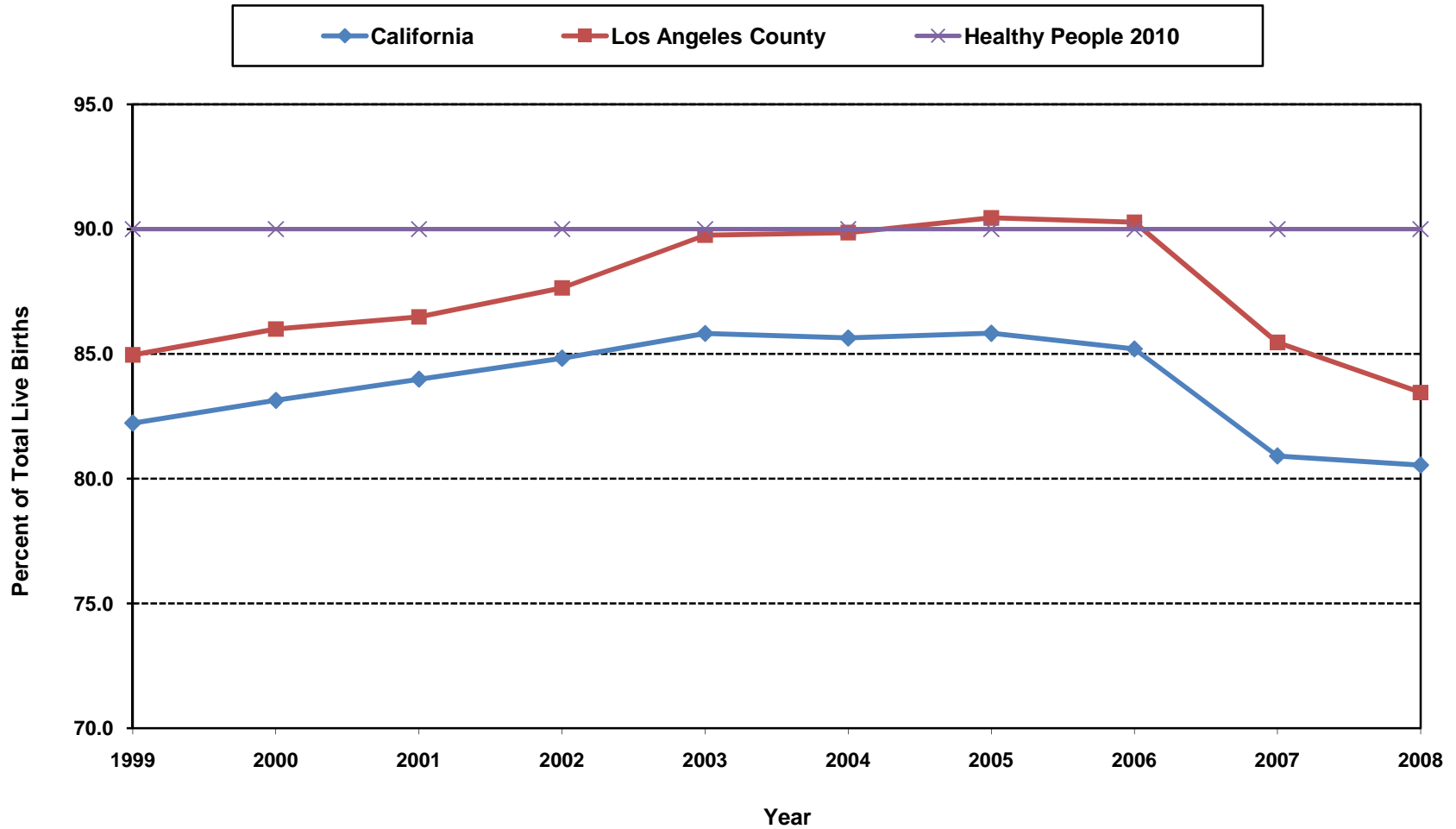
Denominator: Live Births		
Year	California	LA County
1999	518,073	156,153
2000	531,285	157,391
2001	527,371	153,523
2002	529,245	151,167
2003	540,827	152,192
2004	544,685	151,504
2005	548,700	150,377
2006	562,157	151,837
2007	567,527	151,813
2008	552,618	147,684

Note: The decrease in first-trimester entry in 2007 is due at least in part to a recategorization of this data in birth certificates.

Note: This measure excludes the prenatal care experiences of all women whose pregnancies did not result in live births.

Source: California Department of Public Health, Center for Health Statistics, OHIR Vital Statistics Section, 1999-2008.

**Percent of First Trimester Onset of Prenatal Care
California vs. Los Angeles County, 1999-2008**



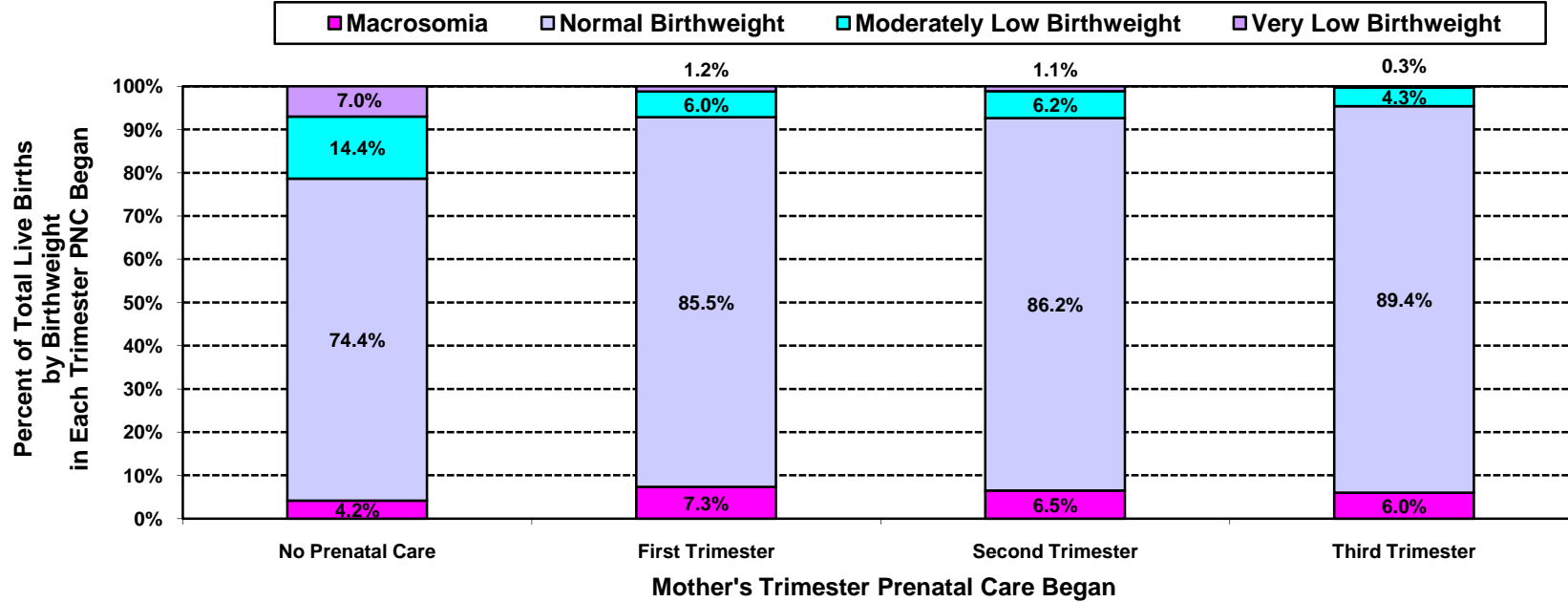
Year 2010 Objective: Increase the proportion of pregnant women who receive prenatal care in the first trimester of pregnancy to 90 percent of live births.

Note: The decrease in first-trimester entry in 2007 is due at least in part to a recategorization of this data in birth certificates.

This measure excludes the prenatal care experiences of all women whose pregnancies did not result in live births.

Source: California Department of Public Health, Center for Health Statistics, OHIR Vital Statistics Section, 1999-2008.

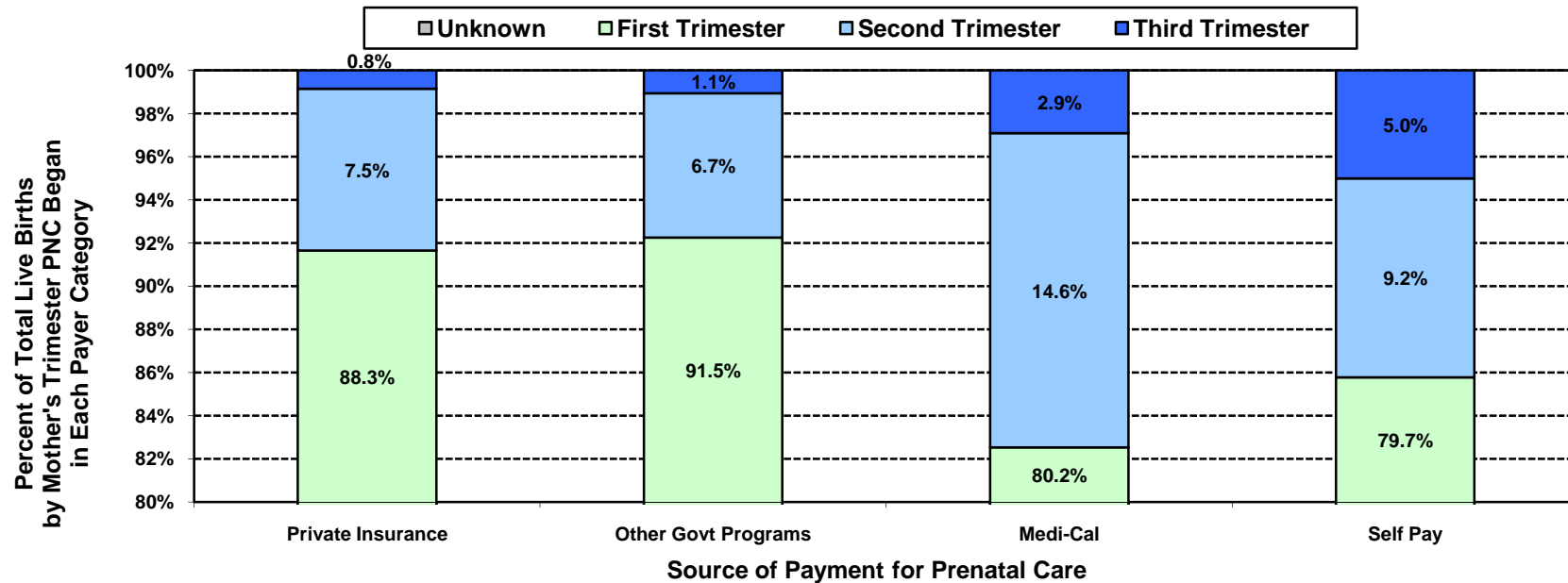
**Percent of Total Live Births
by Birthweight and by Mother's Trimester Prenatal Care (PNC) Began
Los Angeles County, 2008**



Los Angeles County, 2008											
Mother's Trimester Prenatal Care Began	Very Low Birthweight		Moderately Low Birthweight		Normal Birthweight		Macrosumia		Birthweight Unknown		Total Live Births
	0 to 1,499 grams		1,500 to 2,499 grams		2,500 to 3,999 grams		4,000+ grams				
	Number	Percent	Number	Percent	Number	Percent	Number	Percent	Number	Percent	
No Prenatal Care	30	7.0	62	14.4	320	74.4	18	4.2	<5	N/C	430
First	1,450	1.2	7,372	6.0	105,422	85.5	9,007	7.3	<5	N/C	123,251
Second	190	1.1	1,041	6.2	14,470	86.2	1,090	6.5	<5	N/C	16,791
Third	9	0.3	130	4.3	2,704	89.4	181	6.0	<5	N/C	3,024
Unknown	115	2.7	401	9.6	3,411	81.4	260	6.2	<5	N/C	4,188
Total	1,794	1.2	9,006	6.1	126,327	85.5	10,556	7.1	<5	N/C	147,684

Note: "Trimester Prenatal Care Began" excludes the prenatal care experiences of all women whose pregnancies did not result in a live birth.
 Numbers fewer than 5 are shown as "<5". Rates are not calculated (N/C) if number is fewer than five.
 Source: California Department of Public Health, Center for Health Statistics, OHIR Vital Statistics Section, 2008

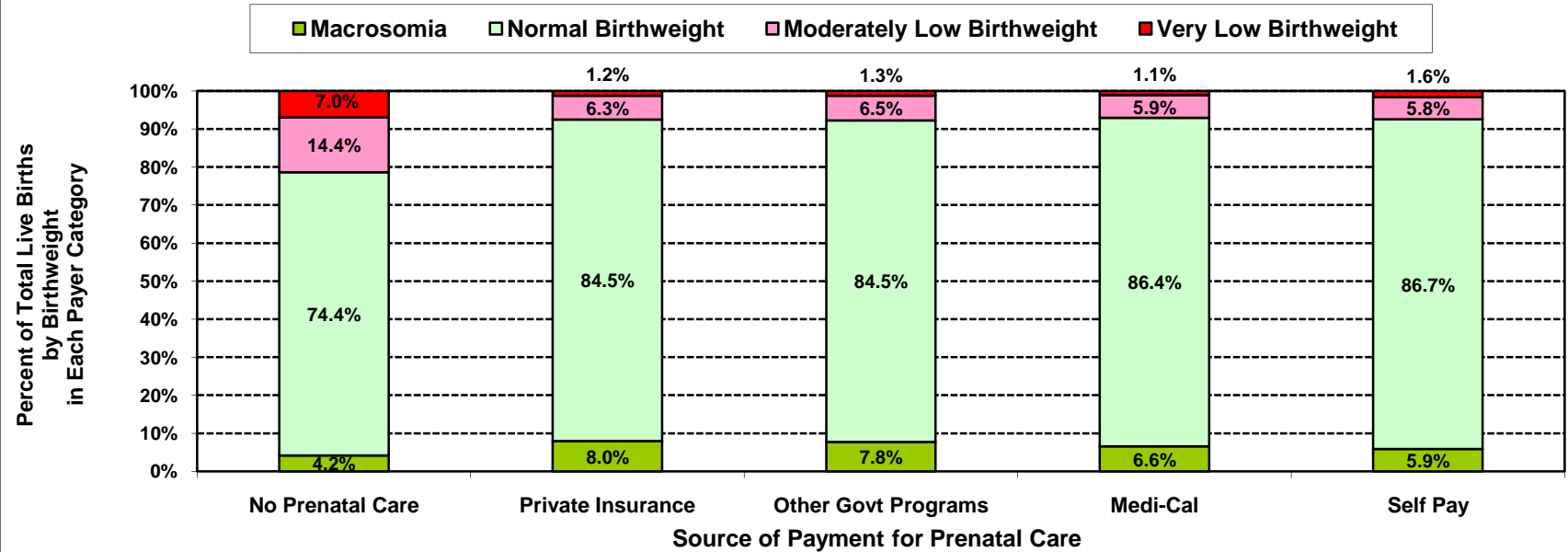
**Percent of Total Live Births by Mother's Trimester Prenatal Care (PNC) Began
and by Source of Payment for Prenatal Care (PNC)
Los Angeles County, 2008**



Los Angeles County, 2008											
Source of Payment for Prenatal Care	No Prenatal Care		Mother's Trimester Prenatal Care Began						Unknown		Total Live Births
	Number	Percent	First		Second		Third		Number	Percent	
			Number	Percent	Number	Percent	Number	Percent			
No Prenatal Care	430	100.0	<5	N/C	<5	N/C	<5	N/C	<5	N/C	430
Private Insurance	<5	N/C	50,671	88.3	4,308	7.5	485	0.8	1,916	3.3	57,380
Other Govt Programs	<5	N/C	1,995	91.5	146	6.7	23	1.1	16	0.7	2,180
Medi-Cal	<5	N/C	63,344	80.2	11,514	14.6	2,298	2.9	1,875	2.4	79,031
Self Pay	<5	N/C	2,594	79.7	300	9.2	163	5.0	199	6.1	3,256
Other/Unknown	<5	N/C	4,647	85.9	523	9.7	55	1.0	182	3.4	5,407
Total	430	0.3	123,251	83.5	16,791	11.4	3,024	2.0	4,188	2.8	147,684

Note: "Trimester Prenatal Care Began" excludes the prenatal care experiences of all women whose pregnancies did not result in a live birth.
 Numbers fewer than 5 are shown as "<5". Rates are not calculated (N/C) if number is fewer than five.
 Source: California Department of Public Health, Center for Health Statistics, OHIR Vital Statistics Section, 2008

**Percent of Total Live Births
by Birthweight and by Source of Payment for Prenatal Care (PNC)
Los Angeles County, 2008**

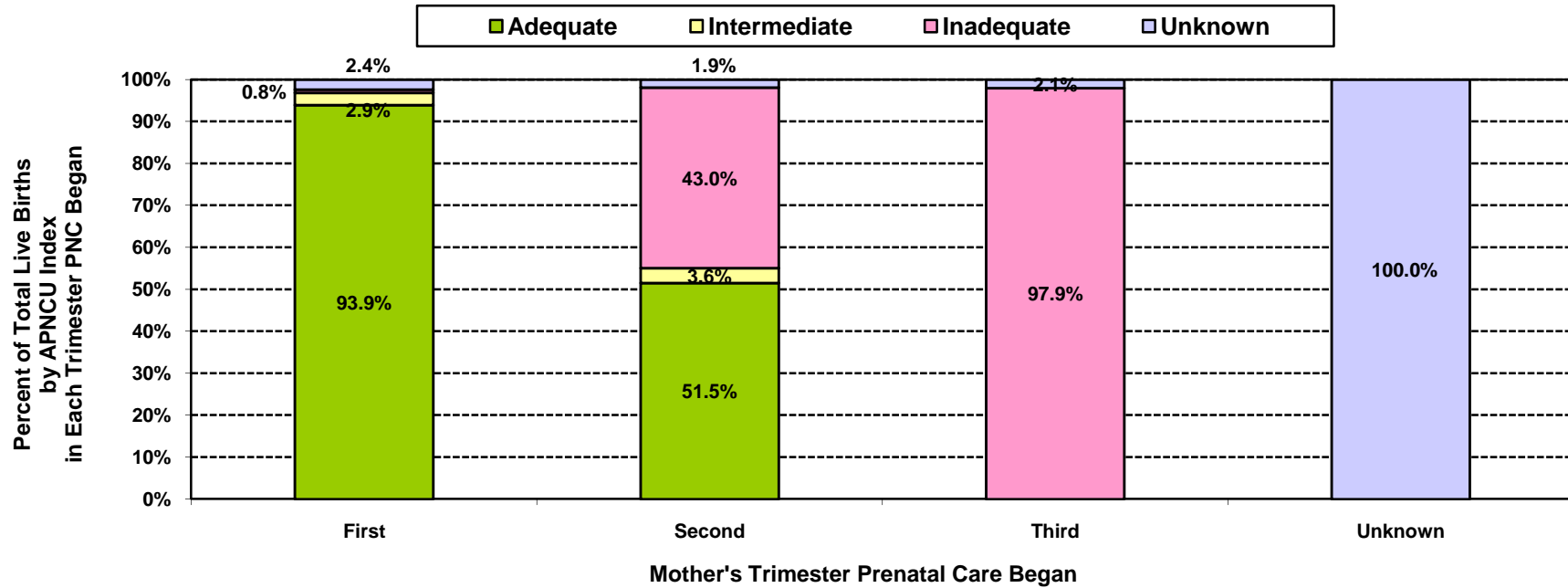


Los Angeles County, 2008											
Source of Payment for Prenatal Care	Very Low Birthweight		Moderately Low Birthweight		Normal Birthweight		Macrosumia		Birthweight Unknown		Total Live Births
	0 to 1,499 grams		1,500 to 2,499 grams		2,500 to 3,999 grams		4,000+ grams				
	Number	Percent	Number	Percent	Number	Percent	Number	Percent	Number	Percent	
No Prenatal Care	30	7.0	62	14.4	320	74.4	18	4.2	<5	N/C	430
Private Insurance	716	1.2	3,609	6.3	48,486	84.5	4,569	8.0	<5	N/C	57,380
Other Govt Programs	28	1.3	141	6.5	1,842	84.5	169	7.8	<5	N/C	2,180
Medi-Cal	894	1.1	4,691	5.9	68,254	86.4	5,192	6.6	<5	N/C	79,031
Self Pay	53	1.6	189	5.8	2,822	86.7	192	5.9	<5	N/C	3,256
Other/Unknown	73	1.4	314	5.8	4,603	85.1	416	7.7	<5	N/C	5,407
Total	1,794	1.2	9,006	6.1	126,327	85.5	10,556	7.1	<5	N/C	147,684

Note: "Trimester Prenatal Care Began" excludes the prenatal care experiences of all women whose pregnancies did not result in a live birth. Numbers fewer than 5 are shown as "<5". Rates are not calculated (N/C) if number is fewer than five.

Source: California Department of Public Health, Center for Health Statistics, OHIR Vital Statistics Section, 2008

**Percent of Total Live Births by Adequacy of Prenatal Care Utilization Index
and by Mother's Trimester Prenatal Care (PNC) Began
Los Angeles County, 2008**

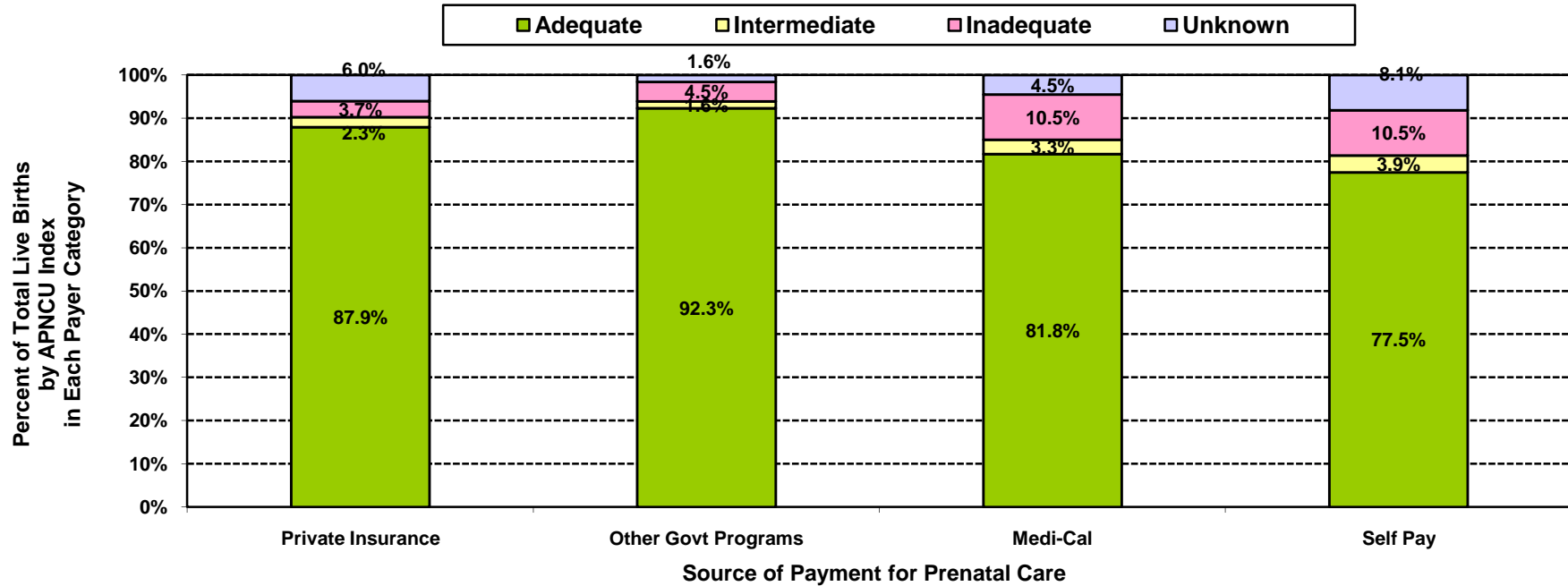


Los Angeles County, 2008									
Mother's Trimester Prenatal Care Began	Adequacy of Prenatal Care Utilization Index						Unknown		Total Live Births
	Adequate		Intermediate		Inadequate		Number	Percent	
	Number	Percent	Number	Percent	Number	Percent			
No Prenatal Care	<5	N/C	<5	N/C	430	100.0	<5	N/C	430
First	115,739	93.9	3,616	2.9	952	0.8	2,944	2.4	123,251
Second	8,642	51.5	601	3.6	7,225	43.0	323	1.9	16,791
Third	<5	N/C	<5	N/C	2,961	97.9	63	2.1	3,024
Unknown	<5	N/C	<5	N/C	<5	N/C	4,188	100.0	4,188
Total	124,381	84.2	4,217	2.9	11,568	7.8	7,518	5.1	147,684

Note: "Trimester Prenatal Care Began" excludes the prenatal care experiences of all women whose pregnancies did not result in a live birth. Numbers fewer than 5 are shown as "<5". Rates are not calculated (N/C) if number is fewer than five.

Source: California Department of Public Health, Center for Health Statistics, OHIR Vital Statistics Section, 2008

**Percent of Total Live Births by Adequacy of Prenatal Care Utilization Index
and by Source of Payment for Prenatal Care (PNC)
Los Angeles County, 2008**



Los Angeles County, 2008									Total Live Births
Source of Payment for Prenatal Care	Adequacy of Prenatal Care Utilization Index						Unknown		
	Adequate		Intermediate		Inadequate		Number	Percent	
	Number	Percent	Number	Percent	Number	Percent			
No Prenatal Care	<5	N/C	<5	N/C	430	100.0	<5	N/C	430
Private Insurance	50,455	87.9	1,340	2.3	2,150	3.7	3,435	6.0	57,380
Other Govt Programs	2,013	92.3	34	1.6	99	4.5	34	1.6	2,180
Medi-Cal	64,608	81.8	2,579	3.3	8,285	10.5	3,559	4.5	79,031
Self Pay	2,522	77.5	128	3.9	342	10.5	264	8.1	3,256
Other/Unknown	4,783	88.5	136	2.5	262	4.8	226	4.2	5,407
Total	124,381	84.2	4,217	2.9	11,568	7.8	7,518	5.1	147,684

Note: Numbers fewer than 5 are shown as "<5". Rates are not calculated (N/C) if number is fewer than five.
Source: California Department of Public Health, Center for Health Statistics, OHIR Vital Statistics Section, 2008

TITLE V INDICATOR TEMPLATE

INDICATOR: Percent of Total Live Births by Adequacy of Prenatal Care Utilization (APNCU) Index

DEFINITION: The percent of live born infants whose mothers received adequate prenatal care as defined by the Adequacy of Prenatal Care Utilization Index (APNCU) developed by Milton Kotelchuck. This index does not assess the quality of the prenatal care that is delivered.

NUMERATOR: The number of live births to women who received adequate care, as defined by the APNCU criteria, by place of residence, in a calendar year

DENOMINATOR: The total number of live births, by place of residence, in a calendar year

HEALTHY PEOPLE 2010 OBJECTIVE:

Increase the proportion of all pregnant women who receive early and adequate prenatal care to 90 percent of live births.
(Baseline: 74 percent of live births in 1998) (Objective 16-6b)

RISK FACTORS:

Inadequate Prenatal Care

Low income; young maternal age/teen pregnancy; low maternal education level; race/ethnicity (African American, Hispanic, American Indian/Alaskan Native); high parity; maternal substance abuse; lack of health insurance; lack of obstetric providers

Year	California				Los Angeles County			
	Adequate Prenatal Care		95% Confidence Interval		Adequate Prenatal Care		95% Confidence Interval	
	Number	Percent	Lower	Upper	Number	Percent	Lower	Upper
1999	424,820	82.0	81.9	82.1	130,451	83.5	83.4	83.7
2000	436,261	82.1	82.0	82.2	132,139	84.0	83.8	84.1
2001	437,754	83.0	82.9	83.1	129,516	84.4	84.2	84.5
2002	442,146	83.5	83.4	83.6	128,984	85.3	85.1	85.5
2003	455,424	84.2	84.1	84.3	132,229	86.9	86.7	87.1
2004	459,050	84.3	84.2	84.4	132,531	87.5	87.3	87.6
2005	469,208	85.5	85.4	85.6	134,611	89.5	89.4	89.7
2006	480,255	85.4	85.3	85.5	135,961	89.5	89.4	89.7
2007	N/A	N/A	N/A	N/A	130,333	85.9	85.7	86.0
2008	N/A	N/A	N/A	N/A	124,381	84.2	84.0	84.4

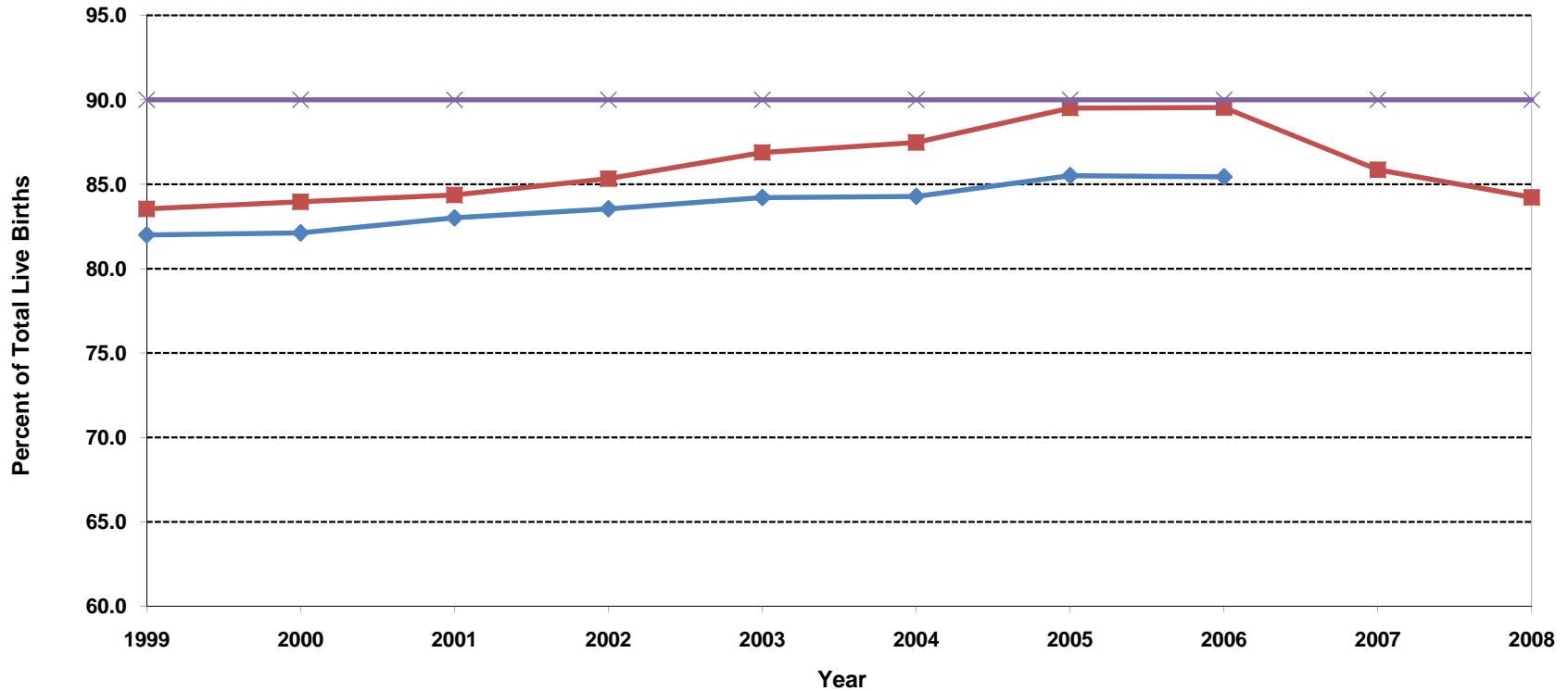
Denominator: Live Births		
Year	California	LA County
1999	518,073	156,153
2000	531,285	157,391
2001	527,371	153,523
2002	529,245	151,167
2003	540,827	152,192
2004	544,685	151,504
2005	548,700	150,377
2006	562,157	151,837
2007	567,527	151,813
2008	551,567	147,684

Note: The APNCU Index measures prenatal care utilization, which includes consideration of the month prenatal care began and the number of prenatal care visits during the time mothers actually received prenatal care. This utilization index is based on the recommendations established by the American College of Obstetrics and Gynecologists (ACOG). Appendix A contains the specific criteria for timing and number of prenatal care visits that are used to assign adequacy categories. Due to the change in methodology for calculating the Kotelchuck Index, data presented may not be comparable to those published in previous FHOP reports. N/A: 2007 & 2008 data for California not available for retrieval

Source: California Department of Public Health, Center for Health Statistics, OHIR Vital Statistics Section, 1999-2008.

**Percent of Total Live Births with "Adequate" Prenatal Care
as Rated by Kotelchuck (APNCU) Index
California vs. Los Angeles County, 1999-2008**

◆ California
 ■ Los Angeles County
 × Health People 2010



Year 2010 Objective: Increase the proportion of pregnant women who receive early and adequate prenatal care to 90 percent of live births.

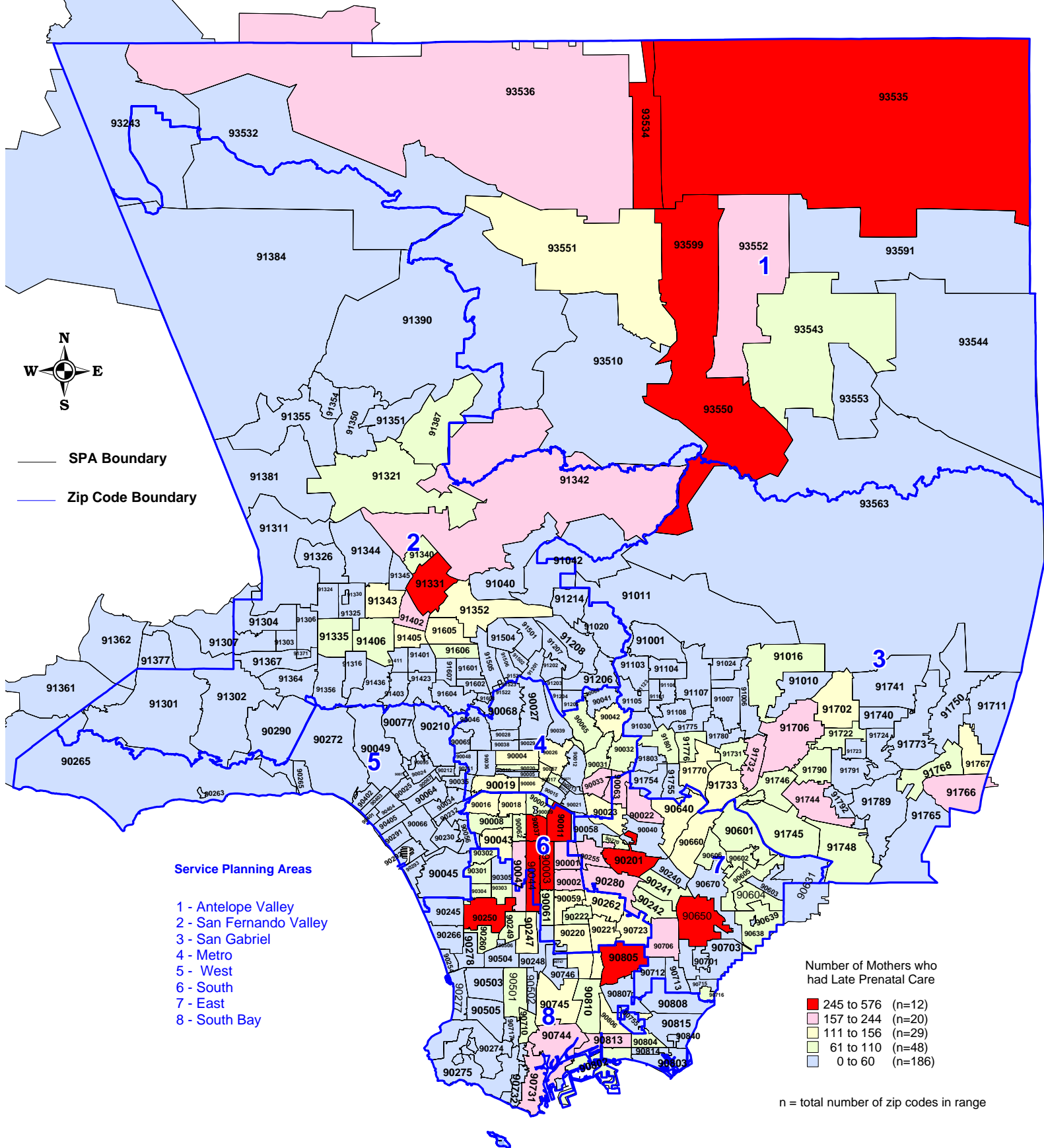
Note: The APNCU Index measures prenatal care utilization, which includes consideration of the month prenatal care began and the number of prenatal care visits during the time mothers actually received prenatal care. This utilization index is based on the recommendations established by the American College of Obstetrics and Gynecologists (ACOG). Appendix A contains the specific criteria for timing and number of prenatal care visits that are used to assign adequacy categories.

Due to the change in methodology for calculating the Kotelchuck Index, data presented may not be comparable to those published in previous FHOP reports.

Source: California Department of Public Health, Center for Health Statistics, OHIR Vital Statistics Section, 1999-2008.

Number of Mothers who had Late Prenatal Care by Zip Code* and Service Planning Area (SPA)

Los Angeles County, 2008



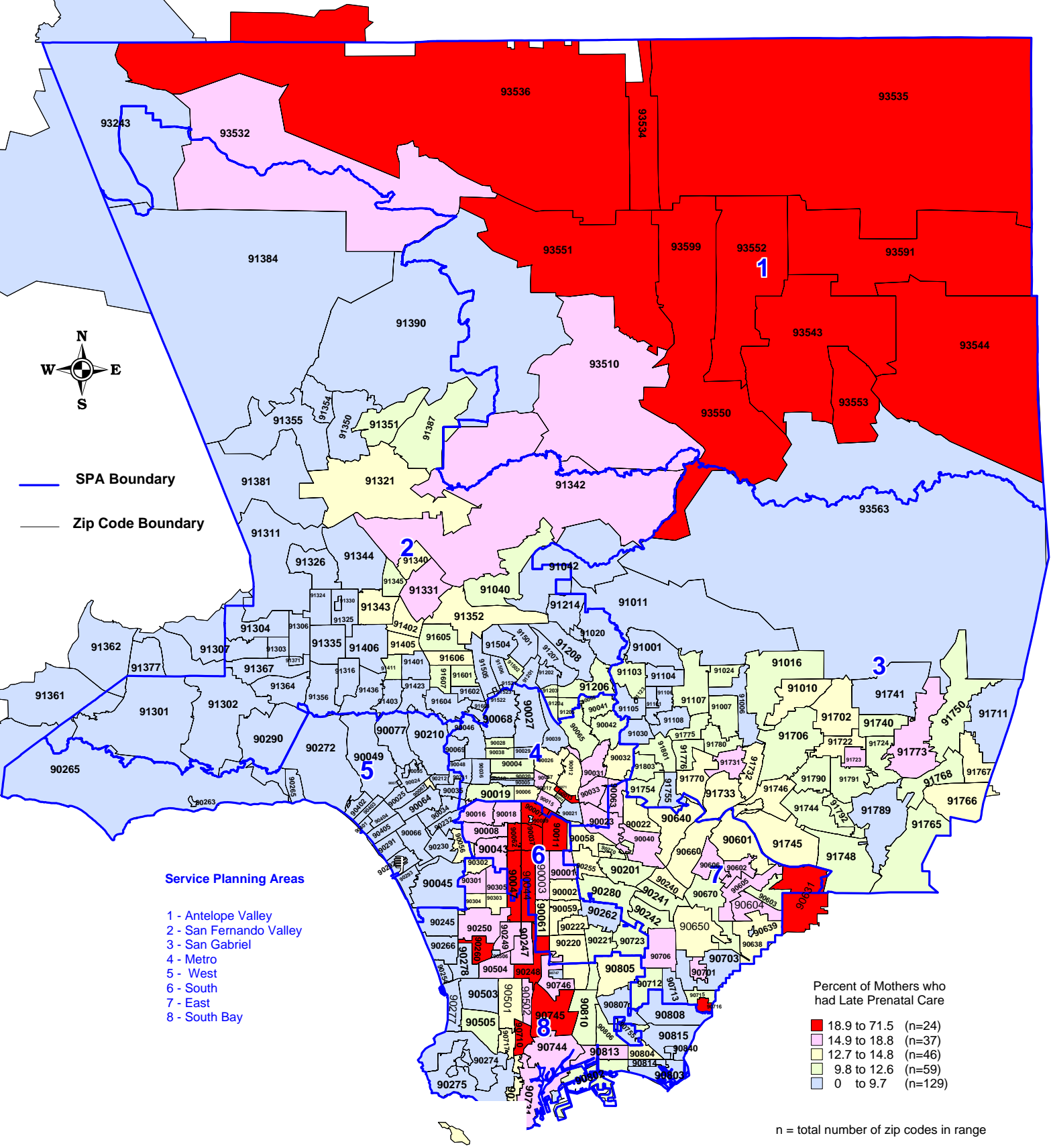
* Los Angeles County zip code boundaries as of April 2007

Total number of live births in Los Angeles County, 2008 = 147,684

Source : California Department of Public Health, Center for Health Statistics, OHIR Vital Statistics Section, 2008

Percent of Mothers who had Late Prenatal Care by Zip Code* and Service Planning Area (SPA)

Los Angeles County, 2008



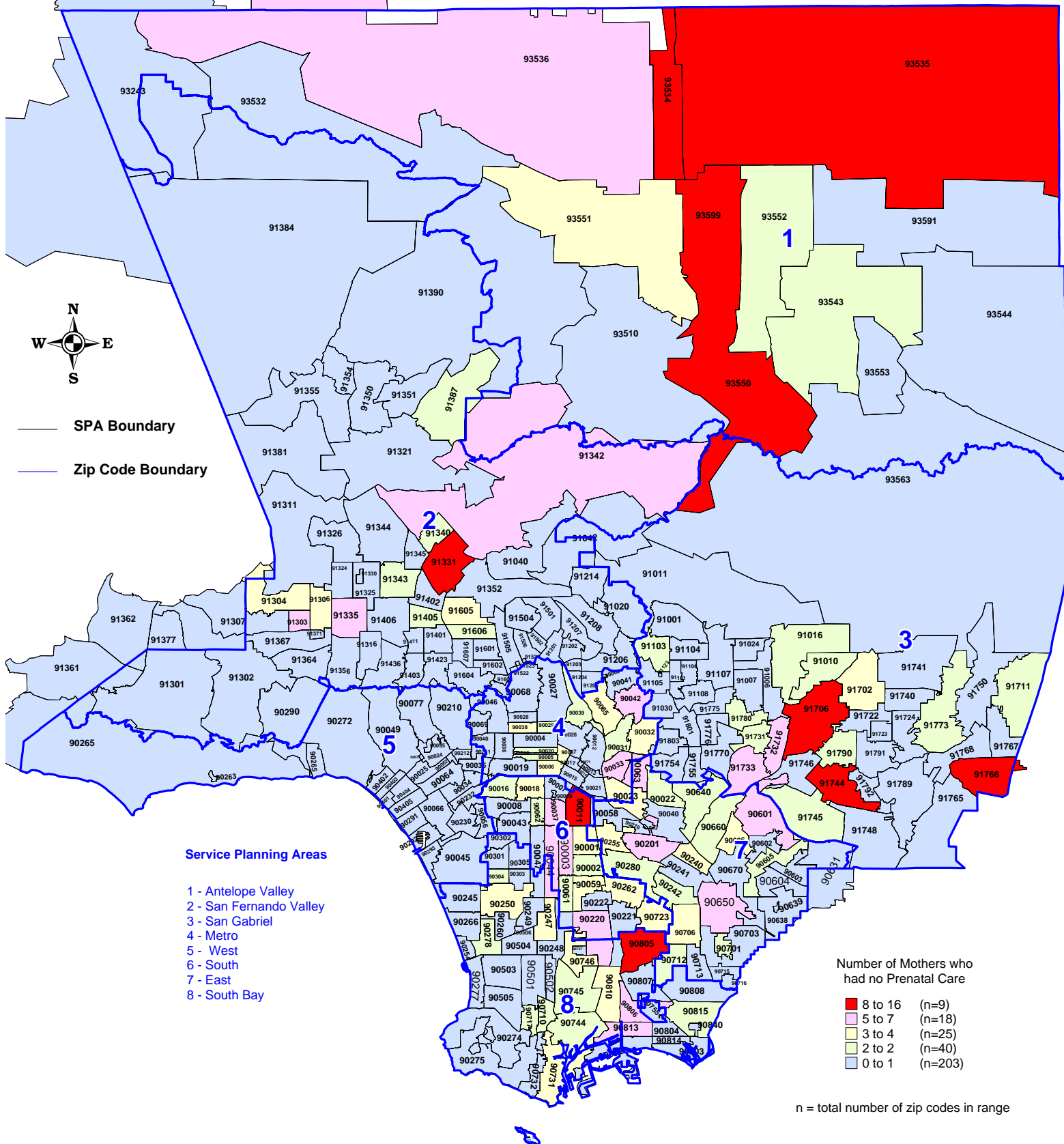
* Los Angeles County zip code boundaries as of April 2007

Total number of live births in Los Angeles County, 2008 = 147,684

Source : California Department of Public Health, Center for Health Statistics, OHIR Vital Statistics Section, 2008

Number of Mothers who had No Prenatal Care by Zip Code* and Service Planning Area (SPA)

Los Angeles County, 2008



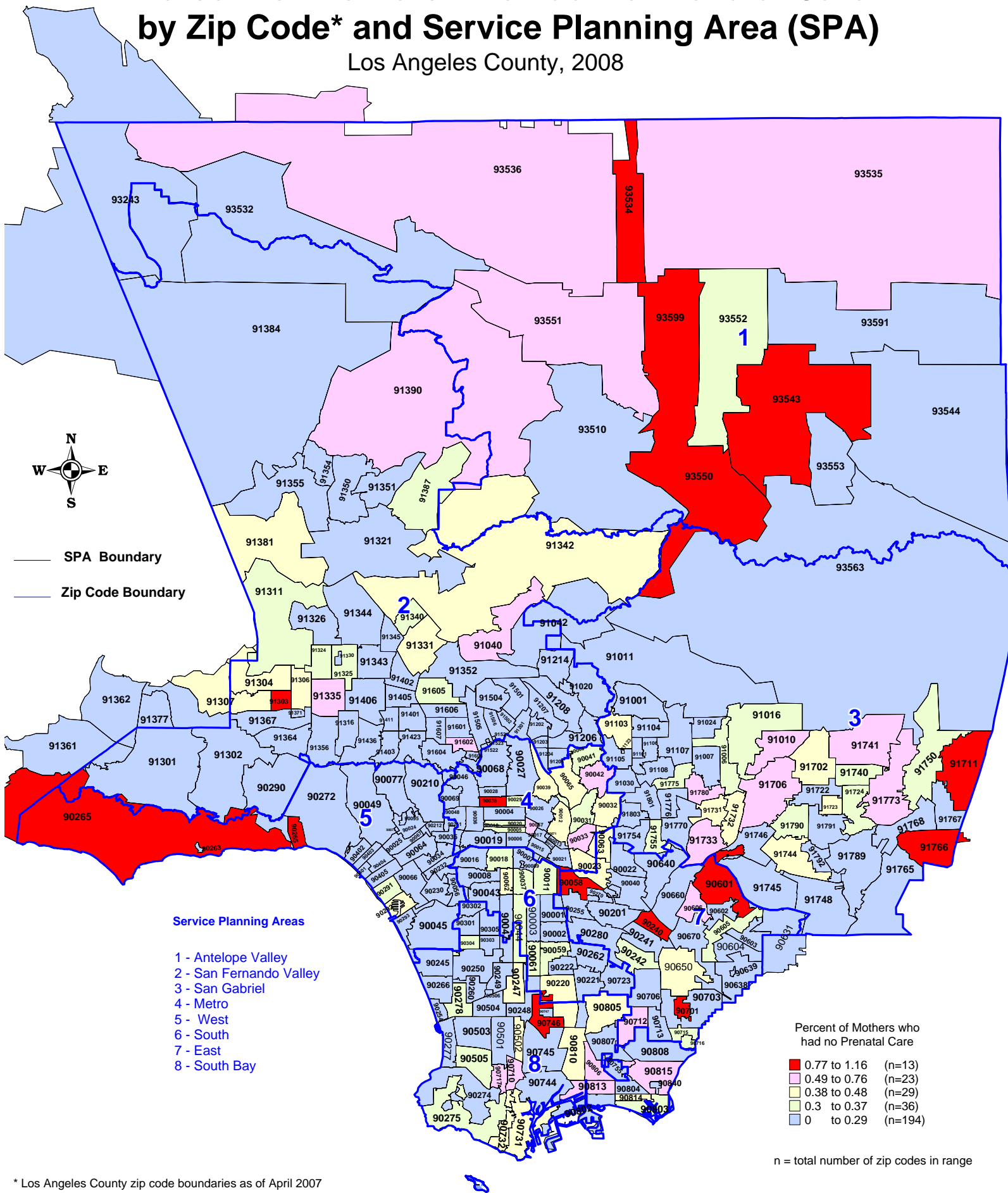
* Los Angeles County zip code boundaries as of April 2007

Total number of live births in Los Angeles County, 2008 = 147,684

Source : California Department of Public Health, Center for Health Statistics, OHIR Vital Statistics Section, 2008

Percent of Mothers who had No Prenatal Care by Zip Code* and Service Planning Area (SPA)

Los Angeles County, 2008



* Los Angeles County zip code boundaries as of April 2007

Total number of live births in Los Angeles County, 2008 = 147,684

Source : California Department of Public Health, Center for Health Statistics, OHIR Vital Statistics Section, 2008

Los Angeles County - Department of Public Health
Entry Into Prenatal Care (PNC) By Zip Code*
 Los Angeles County, 2007

Mother's Residential Zip Code	Mother's Trimester Prenatal Care Began										Total Live Births
	No Prenatal Care		First Trimester		Second Trimester		Third Trimester		Unknown		
	Number	Percent	Number	Percent	Number	Percent	Number	Percent	Number	Percent	
Missing	9	2.4	262	68.8	51	13.4	21	5.5	38	10.0	381
90001	<5	**	1,141	81.4	172	12.3	51	3.6	34	2.4	1,401
90002	<5	**	1,018	83.3	135	11.0	42	3.4	25	2.0	1,222
90003	5	0.3	1,464	79.9	249	13.6	55	3.0	60	3.3	1,833
90004	<5	**	823	84.8	99	10.2	20	2.1	29	3.0	971
90005	<5	**	519	86.2	46	7.6	9	1.5	26	4.3	602
90006	<5	**	845	81.3	116	11.2	36	3.5	39	3.8	1,039
90007	<5	**	404	76.4	78	14.7	22	4.2	24	4.5	529
90008	<5	**	337	73.6	73	15.9	11	2.4	36	7.9	458
90010	<5	**	14	93.3	<5	**	<5	**	<5	**	15
90011	10	0.4	2,045	75.6	467	17.3	109	4.0	74	2.7	2,705
90012	<5	**	211	80.2	25	9.5	11	4.2	15	5.7	263
90013	<5	**	26	65.0	6	15.0	<5	**	5	12.5	40
90014	<5	**	18	69.2	<5	**	<5	**	5	19.2	26
90015	<5	**	240	79.5	38	12.6	9	3.0	15	5.0	302
90016	<5	**	592	76.6	101	13.1	22	2.8	56	7.2	773
90017	<5	**	373	81.1	51	11.1	16	3.5	19	4.1	460
90018	<5	**	673	78.8	117	13.7	27	3.2	34	4.0	854
90019	<5	**	858	83.4	103	10.0	15	1.5	52	5.1	1,029
90020	<5	**	530	84.5	57	9.1	11	1.8	27	4.3	627
90021	<5	**	22	91.7	<5	**	<5	**	<5	**	24
90022	<5	**	1,113	82.4	174	12.9	27	2.0	34	2.5	1,350
90023	<5	**	782	82.8	128	13.5	19	2.0	12	1.3	945
90024	<5	**	261	87.3	10	3.3	<5	**	27	9.0	299
90025	<5	**	465	89.3	19	3.6	<5	**	35	6.7	521
90026	<5	**	817	83.0	103	10.5	26	2.6	37	3.8	984
90027	<5	**	397	90.8	19	4.3	6	1.4	15	3.4	437
90028	<5	**	209	85.3	22	9.0	<5	**	10	4.1	245
90029	<5	**	495	87.9	50	8.9	5	0.9	11	2.0	563
90031	<5	**	523	81.3	87	13.5	10	1.6	21	3.3	643
90032	<5	**	615	81.6	88	11.7	14	1.9	34	4.5	754
90033	5	0.5	828	81.5	135	13.3	30	3.0	18	1.8	1,016
90034	<5	**	663	84.7	56	7.2	<5	**	61	7.8	783
90035	<5	**	294	79.2	18	4.9	<5	**	55	14.8	371
90036	<5	**	411	84.2	20	4.1	6	1.2	50	10.2	488
90037	5	0.4	1,064	75.2	224	15.8	49	3.5	72	5.1	1,414
90038	<5	**	314	82.8	41	10.8	6	1.6	14	3.7	379
90039	<5	**	361	87.4	28	6.8	7	1.7	15	3.6	413
90040	<5	**	197	80.4	31	12.7	7	2.9	10	4.1	245
90041	<5	**	253	86.9	30	10.3	<5	**	<5	**	291
90042	5	0.5	866	85.0	101	9.9	14	1.4	33	3.2	1,019
90043	<5	**	489	75.9	96	14.9	15	2.3	43	6.7	644
90044	7	0.4	1,501	77.3	301	15.5	70	3.6	64	3.3	1,943
90045	<5	**	373	87.1	28	6.5	<5	**	23	5.4	428
90046	<5	**	288	88.6	9	2.8	<5	**	26	8.0	325
90047	<5	**	595	75.9	133	17.0	25	3.2	30	3.8	784
90048	<5	**	201	87.0	<5	**	<5	**	25	10.8	231
90049	<5	**	305	88.4	10	2.9	<5	**	29	8.4	345
90056	<5	**	51	78.5	8	12.3	<5	**	5	7.7	65
90057	<5	**	653	80.4	107	13.2	23	2.8	25	3.1	812
90058	<5	**	80	80.8	12	12.1	<5	**	<5	**	99
90059	<5	**	818	82.9	120	12.2	27	2.7	19	1.9	987
90061	<5	**	510	84.6	66	10.9	19	3.2	6	1.0	603

Los Angeles County - Department of Public Health
Entry Into Prenatal Care (PNC) By Zip Code*
 Los Angeles County, 2007

Mother's Residential Zip Code	Mother's Trimester Prenatal Care Began										Total Live Births
	No Prenatal Care		First Trimester		Second Trimester		Third Trimester		Unknown		
	Number	Percent	Number	Percent	Number	Percent	Number	Percent	Number	Percent	
90062	<5	**	396	75.3	84	16.0	17	3.2	27	5.1	526
90063	5	0.4	941	82.6	143	12.6	32	2.8	18	1.6	1,139
90064	<5	**	266	89.6	8	2.7	<5	**	21	7.1	297
90065	<5	**	594	86.6	66	9.6	8	1.2	15	2.2	686
90066	<5	**	802	89.3	45	5.0	10	1.1	40	4.5	898
90067	<5	**	11	78.6	<5	**	<5	**	<5	**	14
90068	<5	**	182	87.5	15	7.2	<5	**	10	4.8	208
90069	<5	**	129	85.4	7	4.6	<5	**	14	9.3	151
90071	<5	**	<5	**	<5	**	<5	**	<5	**	6
90077	<5	**	61	89.7	<5	**	<5	**	5	7.4	68
90089	<5	**	<5	**	<5	**	<5	**	<5	**	<5
90095	<5	**	<5	**	<5	**	<5	**	<5	**	<5
90201	5	0.2	1,803	86.6	203	9.8	44	2.1	27	1.3	2,082
90210	<5	**	166	81.0	9	4.4	<5	**	29	14.1	205
90211	<5	**	73	84.9	<5	**	<5	**	10	11.6	86
90212	<5	**	92	86.0	<5	**	<5	**	14	13.1	107
90220	5	0.5	882	84.0	126	12.0	25	2.4	12	1.1	1,050
90221	<5	**	1,103	86.4	111	8.7	38	3.0	23	1.8	1,276
90222	<5	**	598	85.6	72	10.3	17	2.4	11	1.6	699
90230	<5	**	329	86.1	26	6.8	5	1.3	22	5.8	382
90232	<5	**	140	88.1	8	5.0	<5	**	10	6.3	159
90240	<5	**	265	84.4	36	11.5	5	1.6	5	1.6	314
90241	<5	**	569	88.1	65	10.1	<5	**	8	1.2	646
90242	<5	**	568	88.3	55	8.6	9	1.4	9	1.4	643
90245	<5	**	180	90.0	14	7.0	<5	**	5	2.5	200
90247	<5	**	579	80.5	106	14.7	19	2.6	12	1.7	719
90248	<5	**	104	78.8	23	17.4	<5	**	<5	**	132
90249	<5	**	351	81.4	57	13.2	12	2.8	11	2.6	431
90250	<5	**	1,331	80.7	237	14.4	44	2.7	34	2.1	1,649
90254	<5	**	203	94.4	7	3.3	<5	**	<5	**	215
90255	<5	**	1,273	85.6	155	10.4	38	2.6	19	1.3	1,488
90260	<5	**	440	77.6	89	15.7	20	3.5	17	3.0	567
90262	<5	**	1,404	89.3	123	7.8	26	1.7	16	1.0	1,573
90263	<5	**	5	83.3	<5	**	<5	**	<5	**	6
90265	<5	**	97	89.8	<5	**	<5	**	7	6.5	108
90266	<5	**	355	93.2	11	2.9	<5	**	14	3.7	381
90270	<5	**	480	86.6	61	11.0	6	1.1	6	1.1	554
90272	<5	**	194	93.3	<5	**	<5	**	13	6.3	208
90274	<5	**	122	90.4	8	5.9	<5	**	<5	**	135
90275	<5	**	243	88.0	20	7.2	5	1.8	7	2.5	276
90277	<5	**	323	90.2	21	5.9	5	1.4	9	2.5	358
90278	<5	**	577	91.2	34	5.4	10	1.6	10	1.6	633
90280	<5	**	1,613	87.9	165	9.0	36	2.0	18	1.0	1,834
90290	<5	**	40	85.1	<5	**	<5	**	<5	**	47
90291	<5	**	277	85.0	24	7.4	<5	**	23	7.1	326
90292	<5	**	200	92.2	5	2.3	<5	**	10	4.6	217
90293	<5	**	98	91.6	<5	**	<5	**	5	4.7	107
90301	<5	**	518	82.4	83	13.2	12	1.9	16	2.5	629
90302	<5	**	389	81.0	59	12.3	10	2.1	22	4.6	480
90303	<5	**	415	82.7	64	12.7	10	2.0	13	2.6	502
90304	<5	**	521	83.6	70	11.2	18	2.9	12	1.9	623
90305	<5	**	129	81.1	21	13.2	<5	**	6	3.8	159
90401	<5	**	57	93.4	<5	**	<5	**	<5	**	61

Los Angeles County - Department of Public Health
Entry Into Prenatal Care (PNC) By Zip Code*
 Los Angeles County, 2007

Mother's Residential Zip Code	Mother's Trimester Prenatal Care Began										Total Live Births
	No Prenatal Care		First Trimester		Second Trimester		Third Trimester		Unknown		
	Number	Percent	Number	Percent	Number	Percent	Number	Percent	Number	Percent	
90402	<5	**	113	94.2	<5	**	<5	**	6	5.0	120
90403	<5	**	241	89.6	11	4.1	<5	**	15	5.6	269
90404	<5	**	204	85.7	15	6.3	<5	**	16	6.7	238
90405	<5	**	260	93.2	5	1.8	<5	**	14	5.0	279
90501	<5	**	550	84.6	76	11.7	17	2.6	6	0.9	650
90502	<5	**	218	83.5	35	13.4	<5	**	<5	**	261
90503	<5	**	424	89.6	41	8.7	5	1.1	<5	**	473
90504	<5	**	256	82.3	42	13.5	9	2.9	<5	**	311
90505	<5	**	295	88.3	27	8.1	10	3.0	<5	**	334
90601	5	1.1	381	83.2	51	11.1	10	2.2	11	2.4	458
90602	<5	**	350	80.5	66	15.2	8	1.8	10	2.3	435
90603	<5	**	168	87.0	24	12.4	<5	**	<5	**	193
90604	<5	**	443	80.4	87	15.8	14	2.5	6	1.1	551
90605	<5	**	511	81.0	93	14.7	13	2.1	12	1.9	631
90606	<5	**	408	79.7	75	14.6	17	3.3	9	1.8	512
90631	<5	**	26	78.8	7	21.2	<5	**	<5	**	33
90638	<5	**	444	85.7	58	11.2	9	1.7	6	1.2	518
90639	<5	**	<5	**	<5	**	<5	**	<5	**	<5
90640	<5	**	800	84.1	112	11.8	18	1.9	19	2.0	951
90650	7	0.4	1,447	84.0	204	11.8	41	2.4	23	1.3	1,722
90660	<5	**	828	83.7	124	12.5	16	1.6	19	1.9	989
90670	<5	**	171	86.8	20	10.2	<5	**	<5	**	197
90701	<5	**	186	80.9	31	13.5	6	2.6	5	2.2	230
90703	<5	**	325	88.8	26	7.1	7	1.9	8	2.2	366
90704	<5	**	45	86.5	<5	**	<5	**	<5	**	52
90706	<5	**	1,065	83.0	180	14.0	18	1.4	17	1.3	1,283
90710	<5	**	310	78.1	70	17.6	10	2.5	5	1.3	397
90712	<5	**	352	87.8	31	7.7	10	2.5	6	1.5	401
90713	<5	**	291	89.3	24	7.4	<5	**	7	2.1	326
90715	<5	**	283	86.0	33	10.0	<5	**	9	2.7	329
90716	<5	**	247	78.7	53	16.9	11	3.5	<5	**	314
90717	<5	**	241	85.8	35	12.5	<5	**	<5	**	281
90723	<5	**	942	85.9	109	9.9	30	2.7	13	1.2	1,097
90731	<5	**	732	81.2	139	15.4	18	2.0	9	1.0	902
90732	<5	**	173	82.8	24	11.5	6	2.9	5	2.4	209
90744	<5	**	880	81.9	142	13.2	36	3.4	14	1.3	1,074
90745	<5	**	627	79.3	129	16.3	24	3.0	9	1.1	791
90746	<5	**	211	81.2	29	11.2	15	5.8	<5	**	260
90747	<5	**	<5	**	<5	**	<5	**	<5	**	<5
90802	<5	**	475	84.8	62	11.1	9	1.6	13	2.3	560
90803	<5	**	263	91.3	14	4.9	5	1.7	5	1.7	288
90804	<5	**	564	83.7	82	12.2	17	2.5	10	1.5	674
90805	9	0.5	1,545	81.9	228	12.1	38	2.0	66	3.5	1,886
90806	5	0.5	840	84.5	91	9.2	30	3.0	28	2.8	994
90807	<5	**	379	90.5	28	6.7	<5	**	8	1.9	419
90808	<5	**	363	90.3	20	5.0	<5	**	14	3.5	402
90810	<5	**	522	84.1	64	10.3	14	2.3	18	2.9	621
90813	7	0.5	1,080	79.5	199	14.7	43	3.2	29	2.1	1,358
90814	<5	**	214	91.1	14	6.0	<5	**	5	2.1	235
90815	<5	**	330	89.2	21	5.7	<5	**	13	3.5	370
91001	<5	**	348	78.9	35	7.9	6	1.4	52	11.8	441
91006	<5	**	260	87.2	22	7.4	<5	**	14	4.7	298
91007	<5	**	261	82.3	30	9.5	5	1.6	21	6.6	317

Los Angeles County - Department of Public Health
Entry Into Prenatal Care (PNC) By Zip Code*
 Los Angeles County, 2007

Mother's Residential Zip Code	Mother's Trimester Prenatal Care Began										Total Live Births
	No Prenatal Care		First Trimester		Second Trimester		Third Trimester		Unknown		
	Number	Percent	Number	Percent	Number	Percent	Number	Percent	Number	Percent	
91010	<5	**	331	84.0	46	11.7	5	1.3	10	2.5	394
91011	<5	**	81	93.1	<5	**	<5	**	6	6.9	87
91016	<5	**	516	84.7	61	10.0	14	2.3	16	2.6	609
91020	<5	**	70	94.6	<5	**	<5	**	<5	**	74
91024	<5	**	82	84.5	11	11.3	<5	**	<5	**	97
91030	<5	**	229	85.4	10	3.7	<5	**	27	10.1	268
91040	<5	**	173	85.6	17	8.4	<5	**	7	3.5	202
91042	<5	**	276	89.0	27	8.7	<5	**	7	2.3	310
91101	<5	**	272	81.9	20	6.0	<5	**	37	11.1	332
91103	<5	**	328	73.9	51	11.5	<5	**	59	13.3	444
91104	<5	**	443	80.8	47	8.6	6	1.1	52	9.5	548
91105	<5	**	87	80.6	8	7.4	<5	**	12	11.1	108
91106	<5	**	280	86.2	11	3.4	<5	**	33	10.2	325
91107	<5	**	345	79.9	42	9.7	<5	**	40	9.3	432
91108	<5	**	78	90.7	<5	**	<5	**	6	7.0	86
91201	<5	**	180	90.9	13	6.6	<5	**	5	2.5	198
91202	<5	**	224	89.2	17	6.8	<5	**	8	3.2	251
91203	<5	**	132	87.4	16	10.6	<5	**	<5	**	151
91204	<5	**	155	84.7	15	8.2	6	3.3	7	3.8	183
91205	<5	**	357	87.7	43	10.6	<5	**	<5	**	407
91206	<5	**	304	87.6	33	9.5	<5	**	8	2.3	347
91207	<5	**	97	93.3	6	5.8	<5	**	<5	**	104
91208	<5	**	137	93.2	<5	**	<5	**	5	3.4	147
91214	<5	**	196	90.3	9	4.1	<5	**	12	5.5	217
91301	<5	**	170	93.9	9	5.0	<5	**	<5	**	181
91302	<5	**	186	93.5	5	2.5	<5	**	7	3.5	199
91303	5	1.0	455	89.6	45	8.9	<5	**	<5	**	508
91304	<5	**	565	90.1	48	7.7	6	1.0	5	0.8	627
91306	<5	**	632	91.3	45	6.5	5	0.7	7	1.0	692
91307	<5	**	201	93.5	10	4.7	<5	**	<5	**	215
91311	<5	**	309	92.2	18	5.4	<5	**	5	1.5	335
91316	<5	**	274	94.5	7	2.4	<5	**	8	2.8	290
91321	<5	**	449	84.9	64	12.1	7	1.3	9	1.7	529
91324	<5	**	284	89.3	30	9.4	<5	**	<5	**	318
91325	<5	**	306	90.8	26	7.7	<5	**	<5	**	337
91326	<5	**	280	92.7	14	4.6	6	2.0	<5	**	302
91330	<5	**	<5	**	<5	**	<5	**	<5	**	<5
91331	8	0.4	1,684	83.9	253	12.6	50	2.5	12	0.6	2,007
91335	6	0.6	965	89.4	89	8.2	13	1.2	6	0.6	1,079
91340	<5	**	553	84.6	73	11.2	21	3.2	5	0.8	654
91342	6	0.4	1,255	83.3	187	12.4	38	2.5	21	1.4	1,507
91343	<5	**	918	85.5	131	12.2	14	1.3	9	0.8	1,074
91344	<5	**	467	89.5	40	7.7	10	1.9	<5	**	522
91345	<5	**	219	88.7	21	8.5	5	2.0	<5	**	247
91350	<5	**	383	91.2	29	6.9	<5	**	5	1.2	420
91351	<5	**	407	86.8	51	10.9	<5	**	6	1.3	469
91352	<5	**	691	85.2	103	12.7	8	1.0	8	1.0	811
91354	<5	**	334	92.0	23	6.3	<5	**	<5	**	363
91355	<5	**	319	90.4	25	7.1	<5	**	6	1.7	353
91356	<5	**	293	91.8	18	5.6	<5	**	5	1.6	319
91361	<5	**	17	100.0	<5	**	<5	**	<5	**	17
91362	<5	**	7	100.0	<5	**	<5	**	<5	**	7
91364	<5	**	235	92.2	11	4.3	<5	**	7	2.7	255

Los Angeles County - Department of Public Health
Entry Into Prenatal Care (PNC) By Zip Code*
 Los Angeles County, 2007

Mother's Residential Zip Code	Mother's Trimester Prenatal Care Began										Total Live Births
	No Prenatal Care		First Trimester		Second Trimester		Third Trimester		Unknown		
	Number	Percent	Number	Percent	Number	Percent	Number	Percent	Number	Percent	
91367	<5	**	378	93.3	19	4.7	<5	**	<5	**	405
91381	<5	**	204	89.5	16	7.0	5	2.2	<5	**	228
91384	<5	**	250	89.9	22	7.9	<5	**	<5	**	278
91387	<5	**	490	86.9	56	9.9	9	1.6	7	1.2	564
91390	<5	**	153	89.5	14	8.2	<5	**	<5	**	171
91401	<5	**	522	89.1	48	8.2	7	1.2	8	1.4	586
91402	<5	**	1,192	85.6	161	11.6	36	2.6	<5	**	1,393
91403	<5	**	280	93.6	9	3.0	<5	**	6	2.0	299
91405	<5	**	803	85.6	111	11.8	15	1.6	7	0.7	938
91406	<5	**	833	89.1	82	8.8	5	0.5	14	1.5	935
91411	<5	**	320	86.3	39	10.5	5	1.3	7	1.9	371
91423	<5	**	321	91.5	15	4.3	<5	**	13	3.7	351
91436	<5	**	126	95.5	<5	**	<5	**	<5	**	132
91501	<5	**	208	91.6	12	5.3	<5	**	<5	**	227
91502	<5	**	114	86.4	15	11.4	<5	**	<5	**	132
91504	<5	**	269	93.4	16	5.6	<5	**	<5	**	288
91505	<5	**	307	91.1	22	6.5	<5	**	5	1.5	337
91506	<5	**	194	93.7	10	4.8	<5	**	<5	**	207
91523	<5	**	<5	**	<5	**	<5	**	<5	**	<5
91601	<5	**	448	87.0	49	9.5	7	1.4	10	1.9	515
91602	<5	**	140	89.2	11	7.0	<5	**	<5	**	157
91604	<5	**	283	91.3	5	1.6	<5	**	21	6.8	310
91605	<5	**	864	87.2	103	10.4	16	1.6	5	0.5	991
91606	<5	**	595	84.9	81	11.6	14	2.0	9	1.3	701
91607	<5	**	303	87.3	28	8.1	8	2.3	8	2.3	347
91608	<5	**	<5	**	<5	**	<5	**	<5	**	<5
91702	<5	**	881	82.6	125	11.7	23	2.2	33	3.1	1,066
91706	8	0.6	1,219	85.4	148	10.4	21	1.5	31	2.2	1,427
91711	<5	**	230	88.5	23	8.8	<5	**	<5	**	260
91722	<5	**	429	84.3	61	12.0	9	1.8	9	1.8	509
91723	<5	**	218	83.2	40	15.3	<5	**	<5	**	262
91724	<5	**	238	85.6	26	9.4	<5	**	9	3.2	278
91731	<5	**	407	78.3	67	12.9	20	3.8	24	4.6	520
91732	5	0.4	1,038	81.3	162	12.7	28	2.2	43	3.4	1,276
91733	6	0.7	711	80.6	109	12.4	21	2.4	35	4.0	882
91740	<5	**	234	84.5	29	10.5	6	2.2	7	2.5	277
91741	<5	**	173	89.2	13	6.7	<5	**	<5	**	194
91744	8	0.5	1,421	85.0	182	10.9	29	1.7	32	1.9	1,672
91745	<5	**	561	82.6	80	11.8	9	1.3	27	4.0	679
91746	<5	**	468	84.2	71	12.8	6	1.1	10	1.8	556
91748	<5	**	650	82.4	66	8.4	16	2.0	56	7.1	789
91750	<5	**	243	88.4	27	9.8	<5	**	<5	**	275
91754	<5	**	292	81.8	39	10.9	<5	**	24	6.7	357
91755	<5	**	254	81.9	23	7.4	<5	**	31	10.0	310
91765	<5	**	416	86.7	49	10.2	6	1.3	9	1.9	480
91766	16	1.1	1,160	81.0	183	12.8	18	1.3	55	3.8	1,432
91767	<5	**	748	82.5	111	12.2	16	1.8	31	3.4	907
91768	<5	**	567	85.6	67	10.1	9	1.4	18	2.7	662
91770	<5	**	656	78.9	98	11.8	13	1.6	63	7.6	831
91773	<5	**	253	83.0	39	12.8	8	2.6	<5	**	305

Los Angeles County - Department of Public Health
Entry Into Prenatal Care (PNC) By Zip Code*
 Los Angeles County, 2007

Mother's Residential Zip Code	Mother's Trimester Prenatal Care Began										Total Live Births
	No Prenatal Care		First Trimester		Second Trimester		Third Trimester		Unknown		
	Number	Percent	Number	Percent	Number	Percent	Number	Percent	Number	Percent	
91775	<5	**	250	80.1	36	11.5	<5	**	23	7.4	312
91776	<5	**	426	79.5	62	11.6	5	0.9	42	7.8	536
91780	<5	**	280	80.7	39	11.2	<5	**	23	6.6	347
91789	<5	**	310	88.8	29	8.3	<5	**	8	2.3	349
91790	<5	**	531	85.6	65	10.5	10	1.6	12	1.9	620
91791	<5	**	317	86.4	39	10.6	6	1.6	<5	**	367
91792	<5	**	395	85.7	45	9.8	7	1.5	13	2.8	461
91801	<5	**	524	78.6	73	10.9	7	1.0	62	9.3	667
91803	<5	**	297	81.8	42	11.6	<5	**	20	5.5	363
93510	<5	**	51	85.0	9	15.0	<5	**	<5	**	60
93532	<5	**	19	82.6	<5	**	<5	**	<5	**	23
93534	8	1.1	462	63.6	220	30.3	33	4.5	<5	**	726
93535	9	0.6	856	61.8	452	32.6	62	4.5	6	0.4	1,385
93536	6	0.7	652	75.4	183	21.2	22	2.5	<5	**	865
93543	<5	**	107	56.6	66	34.9	14	7.4	<5	**	189
93544	<5	**	<5	**	5	71.4	<5	**	<5	**	7
93550	14	0.9	954	63.1	469	31.0	73	4.8	<5	**	1,513
93551	<5	**	435	72.7	132	22.1	23	3.8	<5	**	598
93552	<5	**	390	67.8	151	26.3	31	5.4	<5	**	575
93553	<5	**	16	69.6	<5	**	<5	**	<5	**	23
93563	<5	**	<5	**	<5	**	<5	**	<5	**	<5
93591	<5	**	84	68.9	34	27.9	<5	**	<5	**	122
Total	430		123,251		16,791		3,024		4,188		147,684

Note: "Trimester Prenatal Care Began" excludes the prenatal care experiences of all women whose pregnancies did not result in a live birth.

** Results not calculated if less than 5 cases

Source: California Department of Public Health, Center for Health Statistics, OHIR Vital Statistics Section, 2008