

# **Prenatal Care**

**TITLE V INDICATOR TEMPLATE**

**INDICATOR:** First Trimester Onset of Prenatal Care (PNC)

**DEFINITION:** The percent of live born infants whose mothers received prenatal care in the first trimester of pregnancy

**NUMERATOR:** The number of live births to women who received prenatal care during the first trimester, by place of residence, in a calendar year

**DENOMINATOR:** The total number of live births, by place of residence, in a calendar year

**HEALTHY PEOPLE 2010 OBJECTIVE:**

Increase the proportion of pregnant women who receive prenatal care in the first trimester of pregnancy to 90 percent of live births.  
(Baseline: 83 percent of live births in 1998) (Objective 16-6a)

**RISK FACTORS:**

**For not obtaining early prenatal care**

Low income; young maternal age/teen pregnancy; low maternal education level; race/ethnicity (African American, Hispanic, American Indian/Alaska Native); high parity; maternal substance abuse; lack of health insurance; lack of obstetric providers

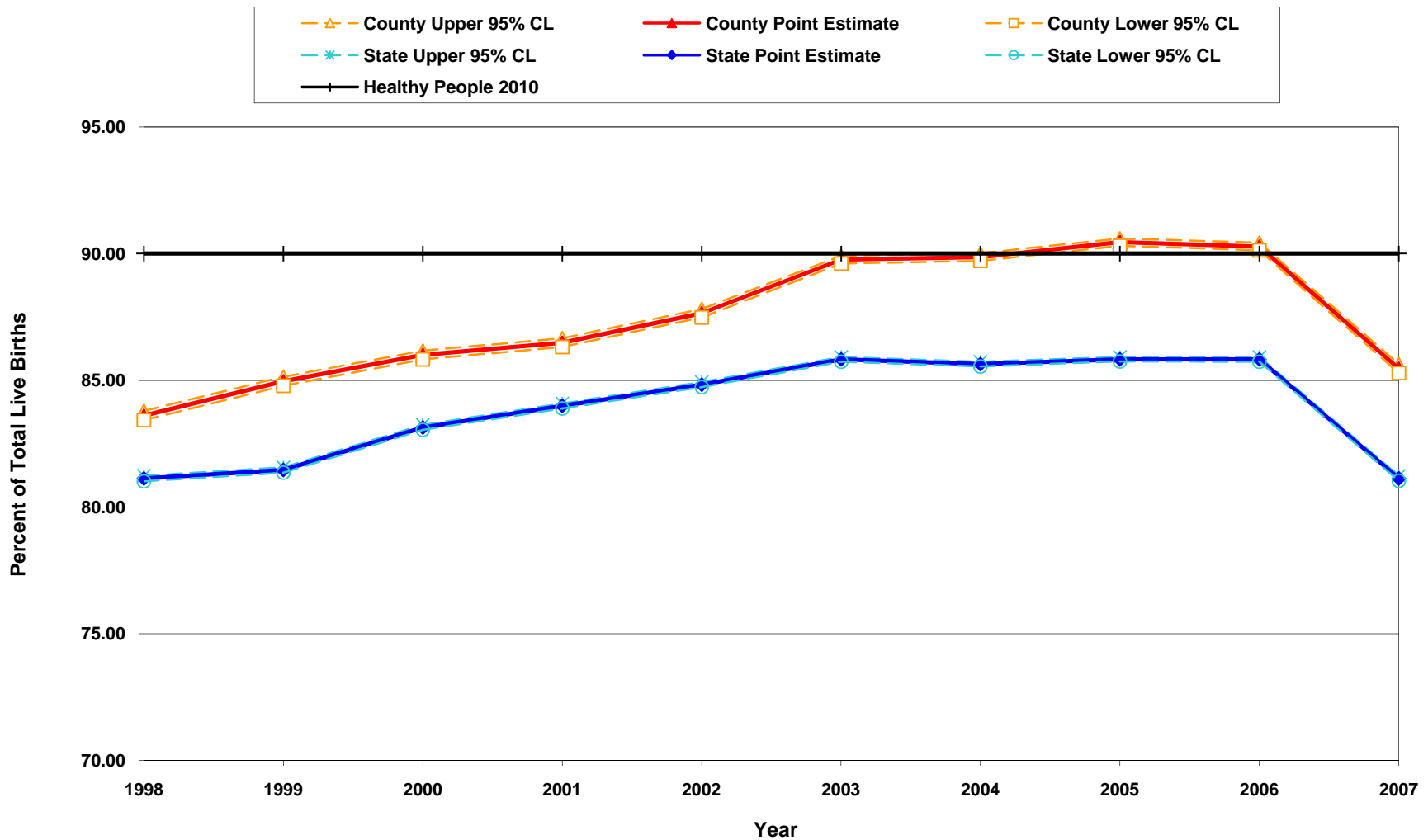
| Year | California                    |         |                         |       | Los Angeles County            |         |                         |       |
|------|-------------------------------|---------|-------------------------|-------|-------------------------------|---------|-------------------------|-------|
|      | First Trimester Prenatal Care |         | 95% Confidence Interval |       | First Trimester Prenatal Care |         | 95% Confidence Interval |       |
|      | Number                        | Percent | Lower                   | Upper | Number                        | Percent | Lower                   | Upper |
| 1998 | 422,866                       | 81.1    | 81.0                    | 81.2  | 132,607                       | 83.6    | 83.4                    | 83.8  |
| 1999 | 422,020                       | 81.5    | 81.4                    | 81.6  | 132,670                       | 85.0    | 84.8                    | 85.1  |
| 2000 | 441,712                       | 83.1    | 83.0                    | 83.2  | 135,356                       | 86.0    | 85.8                    | 86.2  |
| 2001 | 442,936                       | 84.0    | 83.9                    | 84.1  | 132,776                       | 86.5    | 86.3                    | 86.7  |
| 2002 | 448,955                       | 84.8    | 84.7                    | 84.9  | 132,493                       | 87.6    | 87.5                    | 87.8  |
| 2003 | 464,156                       | 85.8    | 85.7                    | 85.9  | 136,609                       | 89.8    | 89.6                    | 89.9  |
| 2004 | 466,463                       | 85.6    | 85.5                    | 85.7  | 136,144                       | 89.9    | 89.7                    | 90.0  |
| 2005 | 470,955                       | 85.8    | 85.7                    | 85.9  | 136,020                       | 90.5    | 90.3                    | 90.6  |
| 2006 | 482,489                       | 85.8    | 85.7                    | 85.9  | 137,077                       | 90.3    | 90.1                    | 90.4  |
| 2007 | 460,440                       | 81.1    | 81.0                    | 81.2  | 129,741                       | 85.5    | 85.3                    | 85.6  |

| Denominator:<br>Live Births |            |           |
|-----------------------------|------------|-----------|
| Year                        | California | LA County |
| 1998                        | 521,265    | 158,604   |
| 1999                        | 518,073    | 156,153   |
| 2000                        | 531,285    | 157,391   |
| 2001                        | 527,371    | 153,523   |
| 2002                        | 529,245    | 151,167   |
| 2003                        | 540,827    | 152,192   |
| 2004                        | 544,685    | 151,504   |
| 2005                        | 548,700    | 150,377   |
| 2006                        | 562,157    | 151,837   |
| 2007                        | 567,527    | 151,813   |

Note: This measure excludes the prenatal care experiences of all women whose pregnancies did not result in live births.

Source: California Department of Public Health, Center for Health Statistics, OHIR Vital Statistics Section, 1998-2007.

### Percent of First Trimester Onset of Prenatal Care California vs. Los Angeles County, 1998-2007



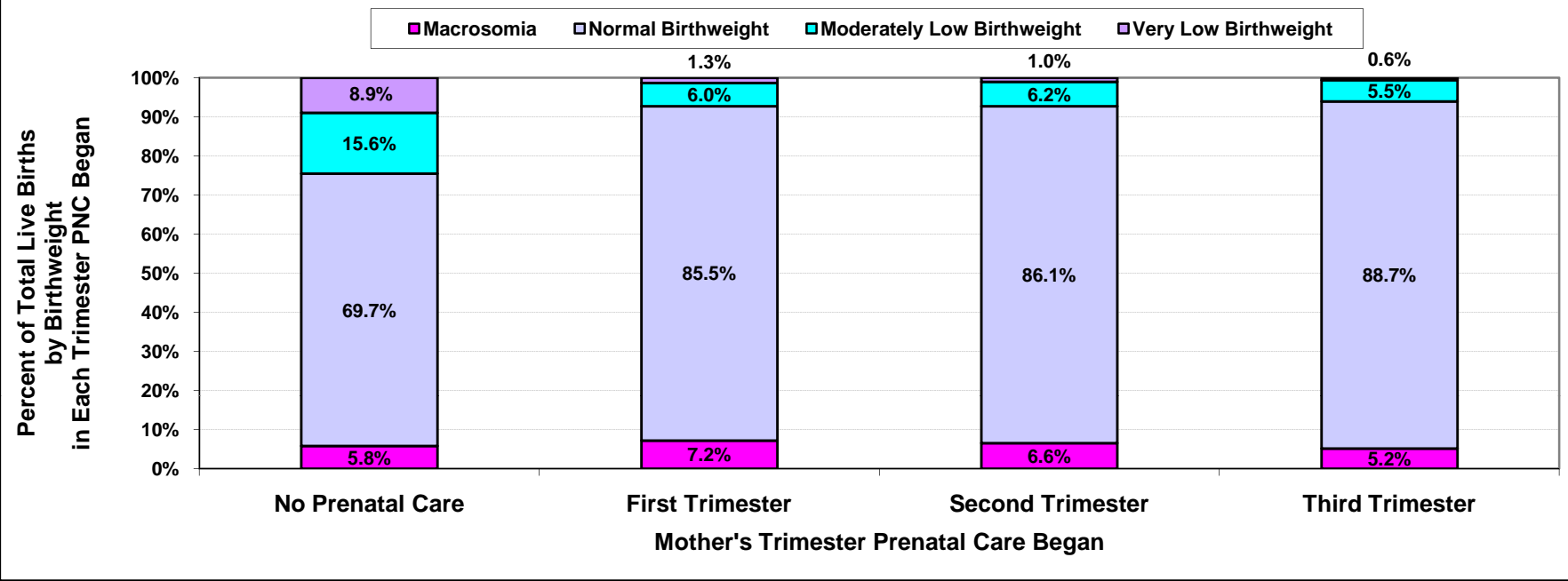
Year 2010 Objective: Increase the proportion of pregnant women who receive prenatal care in the first trimester of pregnancy to 90 percent of live births.

Note: The decrease in first-trimester entry in 2007 is due at least in part to a recategorization of this data in birth certificates.

Note: This measure excludes the prenatal care experiences of all women whose pregnancies did not result in live births.

Source: California Department of Public Health, Center for Health Statistics, OHIR Vital Statistics Section, 1998-2007.

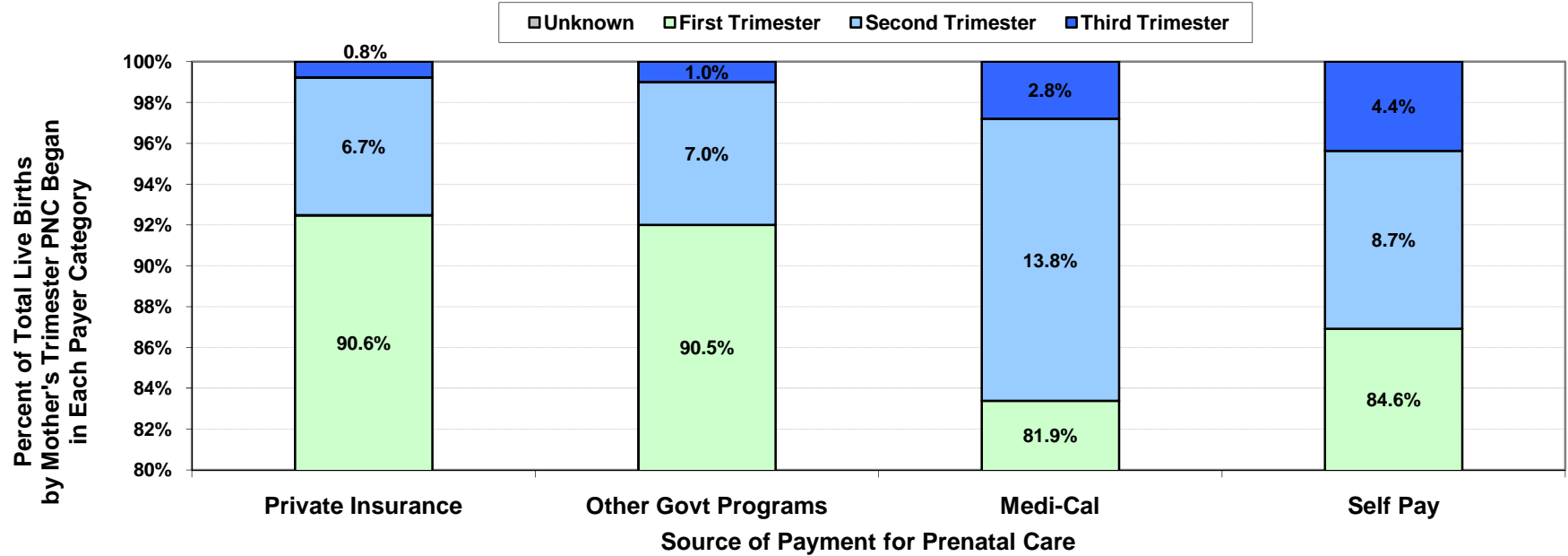
**Percent of Total Live Births  
by Birthweight and by Mother's Trimester Prenatal Care (PNC) Began  
Los Angeles County, 2007**



| Los Angeles County, 2007               |                      |            |                            |            |                      |             |               |            |                     |            |                   |
|--|----------------------|------------|----------------------------|------------|----------------------|-------------|---------------|------------|---------------------|------------|-------------------|
| Mother's Trimester Prenatal Care Began | Very Low Birthweight |            | Moderately Low Birthweight |            | Normal Birthweight   |             | Macrosomia    |            | Birthweight Unknown |            | Total Live Births |
|  | 0 to 1,499 grams     |            | 1,500 to 2,499 grams       |            | 2,500 to 3,999 grams |             | 4,000+ grams  |            |                     |            |                   |
|  | Number               | Percent    | Number                     | Percent    | Number               | Percent     | Number        | Percent    | Number              | Percent    |                   |
| No Prenatal Care                       | 43                   | 8.9        | 75                         | 15.6       | 336                  | 69.7        | 28            | 5.8        | 0                   | 0.0        | 482               |
| First                                  | 1,668                | 1.3        | 7,736                      | 6.0        | 110,975              | 85.5        | 9,362         | 7.2        | 0                   | 0.0        | 129,741           |
| Second                                 | 168                  | 1.0        | 995                        | 6.2        | 13,795               | 86.1        | 1,055         | 6.6        | 0                   | 0.0        | 16,013            |
| Third                                  | 17                   | 0.6        | 162                        | 5.5        | 2,624                | 88.7        | 154           | 5.2        | 0                   | 0.0        | 2,957             |
| Unknown                                | 91                   | 3.5        | 231                        | 8.8        | 2,144                | 81.8        | 154           | 5.9        | 0                   | 0.0        | 2,620             |
| <b>Total</b>                           | <b>1,987</b>         | <b>1.3</b> | <b>9,199</b>               | <b>6.1</b> | <b>129,874</b>       | <b>85.5</b> | <b>10,753</b> | <b>7.1</b> | <b>0</b>            | <b>0.0</b> | <b>151,813</b>    |

Note: "Trimester Prenatal Care Began" excludes the prenatal care experiences of all women whose pregnancies did not result in a live birth.  
Source: California Department of Public Health, Center for Health Statistics, OHIR Vital Statistics Section, 2007

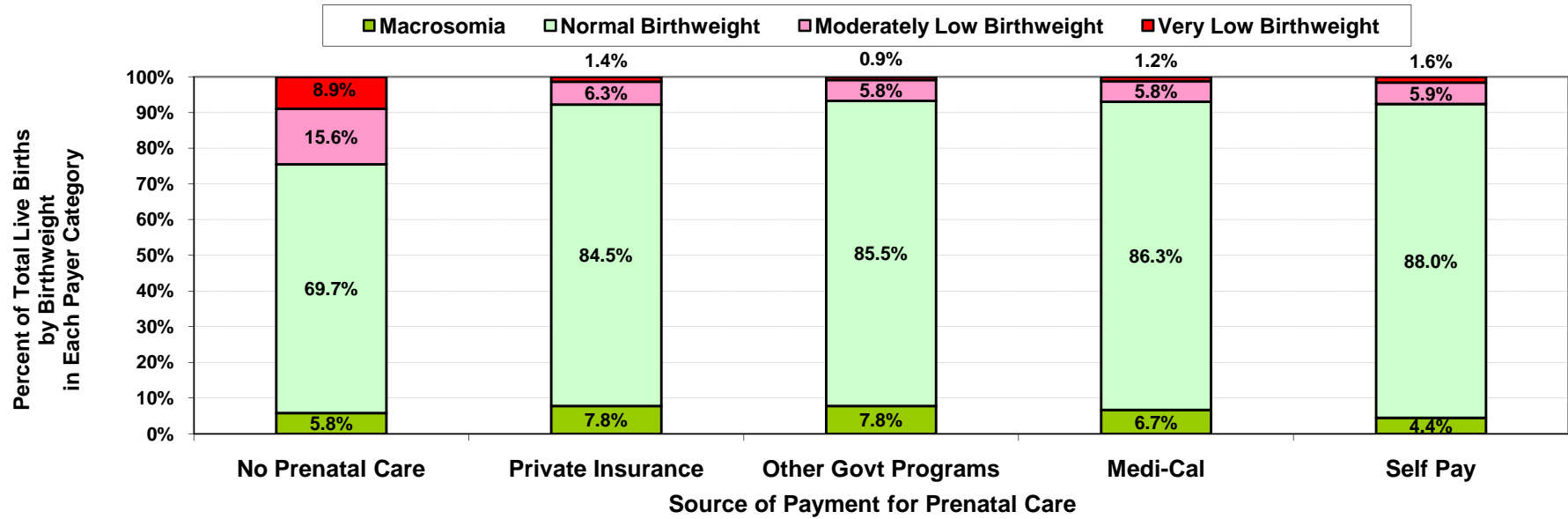
**Percent of Total Live Births by Mother's Trimester Prenatal Care (PNC) Began  
and by Source of Payment for Prenatal Care (PNC)  
Los Angeles County, 2007**



| Los Angeles County, 2007            |                  |            |  |             |               |             |              |            |              |            |                   |
|-------------------------------------|------------------|------------|--|-------------|---------------|-------------|--------------|------------|--------------|------------|-------------------|
| Source of Payment for Prenatal Care | No Prenatal Care |            | Mother's Trimester Prenatal Care Began |             |               |             |              |            | Unknown      |            | Total Live Births |
|                                     | Number           | Percent    | First                                  |             | Second        |             | Third        |            | Number       | Percent    |                   |
|                                     |                  |            | Number                                 | Percent     | Number        | Percent     | Number       | Percent    |              |            |                   |
| No Prenatal Care                    | 482              | 100.0      | 0                                      | 0.0         | 0             | 0.0         | 0            | 0.0        | 0            | 0.0        | 482               |
| Private Insurance                   | 0                | 0.0        | 52,506                                 | 90.6        | 3,906         | 6.7         | 450          | 0.8        | 1,066        | 1.8        | 57,928            |
| Other Govt Programs                 | 0                | 0.0        | 2,165                                  | 90.5        | 167           | 7.0         | 24           | 1.0        | 35           | 1.5        | 2,391             |
| Medi-Cal                            | 0                | 0.0        | 66,003                                 | 81.9        | 11,123        | 13.8        | 2,256        | 2.8        | 1,196        | 1.5        | 80,578            |
| Self Pay                            | 0                | 0.0        | 3,118                                  | 84.6        | 321           | 8.7         | 161          | 4.4        | 87           | 2.4        | 3,687             |
| Other/Unknown                       | 0                | 0.0        | 5,949                                  | 88.2        | 496           | 7.4         | 66           | 1.0        | 236          | 3.5        | 6,747             |
| <b>Total</b>                        | <b>482</b>       | <b>0.3</b> | <b>129,741</b>                         | <b>85.5</b> | <b>16,013</b> | <b>10.5</b> | <b>2,957</b> | <b>1.9</b> | <b>2,620</b> | <b>1.7</b> | <b>151,813</b>    |

Note: "Trimester Prenatal Care Began" excludes the prenatal care experiences of all women whose pregnancies did not result in a live birth.  
Source: California Department of Public Health, Center for Health Statistics, OHIR Vital Statistics Section, 2007

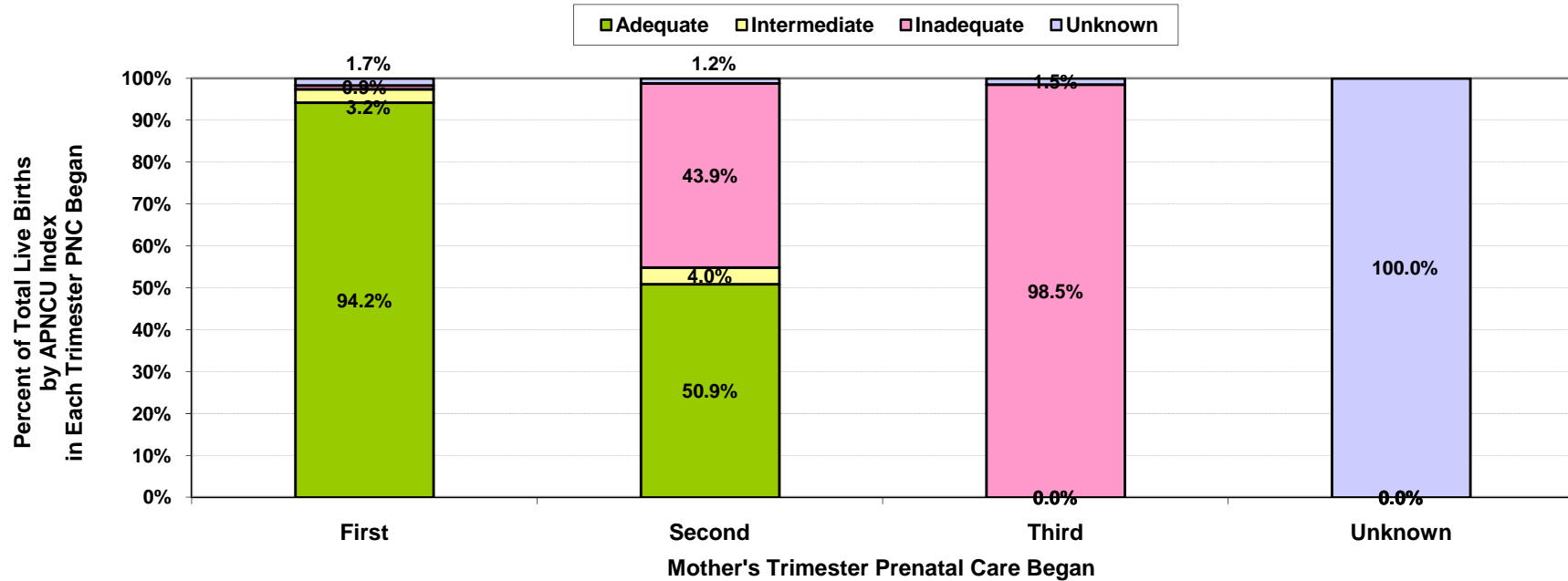
**Percent of Total Live Births  
by Birthweight and by Source of Payment for Prenatal Care (PNC)  
Los Angeles County, 2007**



| Los Angeles County, 2007            |                      |            |                            |            |                      |             |               |            |                     |            |                   |
|-------------------------------------|----------------------|------------|----------------------------|------------|----------------------|-------------|---------------|------------|---------------------|------------|-------------------|
| Source of Payment for Prenatal Care | Very Low Birthweight |            | Moderately Low Birthweight |            | Normal Birthweight   |             | Macrosumia    |            | Birthweight Unknown |            | Total Live Births |
|                                     | 0 to 1,499 grams     |            | 1,500 to 2,499 grams       |            | 2,500 to 3,999 grams |             | 4,000+ grams  |            |                     |            |                   |
|                                     | Number               | Percent    | Number                     | Percent    | Number               | Percent     | Number        | Percent    | Number              | Percent    |                   |
| No Prenatal Care                    | 43                   | 8.9        | 75                         | 15.6       | 336                  | 69.7        | 28            | 5.8        | 0                   | 0.0        | 482               |
| Private Insurance                   | 802                  | 1.4        | 3,671                      | 6.3        | 48,923               | 84.5        | 4,532         | 7.8        | 0                   | 0.0        | 57,928            |
| Other Govt Programs                 | 21                   | 0.9        | 139                        | 5.8        | 2,044                | 85.5        | 187           | 7.8        | 0                   | 0.0        | 2,391             |
| Medi-Cal                            | 973                  | 1.2        | 4,653                      | 5.8        | 69,558               | 86.3        | 5,394         | 6.7        | 0                   | 0.0        | 80,578            |
| Self Pay                            | 60                   | 1.6        | 219                        | 5.9        | 3,244                | 88.0        | 164           | 4.4        | 0                   | 0.0        | 3,687             |
| Other/Unknown                       | 88                   | 1.3        | 442                        | 6.6        | 5,769                | 85.5        | 448           | 6.6        | 0                   | 0.0        | 6,747             |
| <b>Total</b>                        | <b>1,987</b>         | <b>1.3</b> | <b>9,199</b>               | <b>6.1</b> | <b>129,874</b>       | <b>85.5</b> | <b>10,753</b> | <b>7.1</b> | <b>0</b>            | <b>0.0</b> | <b>151,813</b>    |

Note: "Trimester Prenatal Care Began" excludes the prenatal care experiences of all women whose pregnancies did not result in a live birth.  
Source: California Department of Public Health, Center for Health Statistics, OHIR Vital Statistics Section, 2007

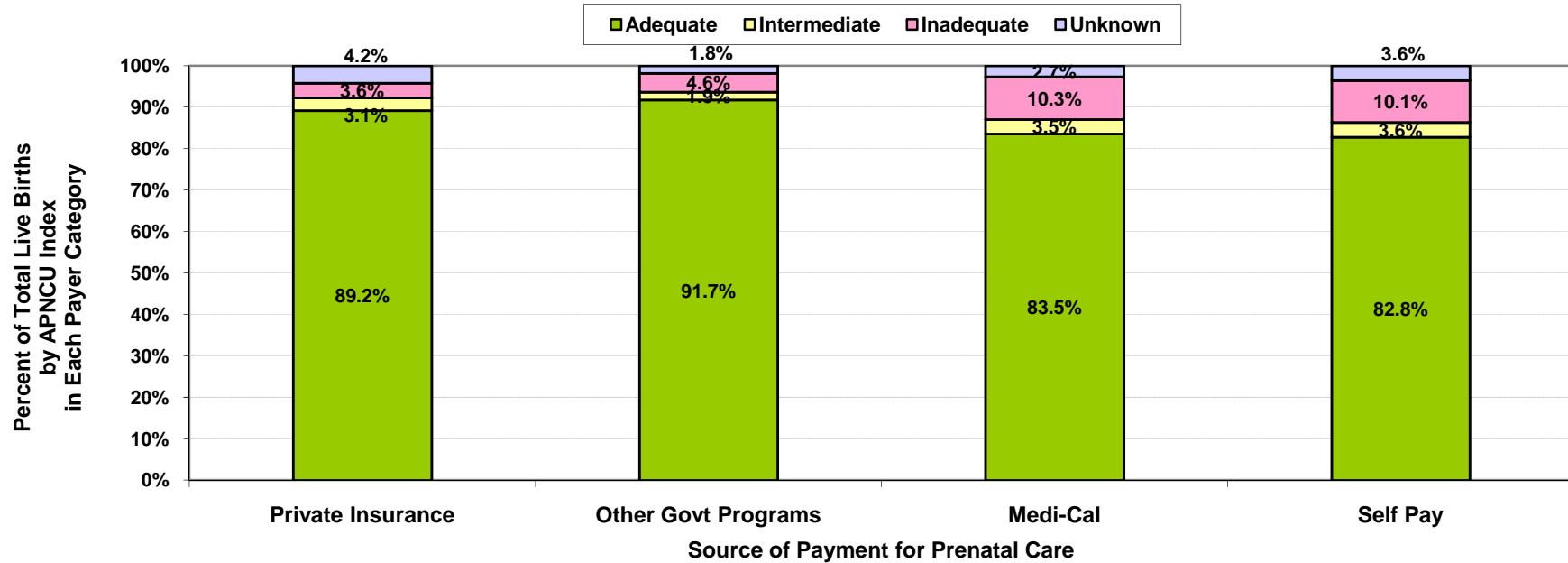
**Percent of Total Live Births by Adequacy of Prenatal Care Utilization Index  
and by Mother's Trimester Prenatal Care (PNC) Began  
Los Angeles County, 2007**



| Los Angeles County, 2007               |   |             |              |            |               |            |              |            |                   |
|--|---|-------------|--------------|------------|---------------|------------|--------------|------------|-------------------|
| Mother's Trimester Prenatal Care Began | Adequacy of Prenatal Care Utilization Index |             |              |            |               |            | Unknown      |            | Total Live Births |
|  | Adequate                                    |             | Intermediate |            | Inadequate    |            | Number       | Percent    |                   |
|  | Number                                      | Percent     | Number       | Percent    | Number        | Percent    |              |            |                   |
| No Prenatal Care                       | 0   | 0.0         | 0            | 0.0        | 482           | 100.0      | 0            | 0.0        | 482               |
| First                                  | 122,185                                     | 94.2        | 4,185        | 3.2        | 1,193         | 0.9        | 2,178        | 1.7        | 129,741           |
| Second                                 | 8,148                                       | 50.9        | 636          | 4.0        | 7,033         | 43.9       | 196          | 1.2        | 16,013            |
| Third                                  | 0   | 0.0         | 0            | 0.0        | 2,913         | 98.5       | 44           | 1.5        | 2,957             |
| Unknown                                | 0   | 0.0         | 0            | 0.0        | 0             | 0.0        | 2,620        | 100.0      | 2,620             |
| <b>Total</b>                           | <b>130,333</b>                              | <b>85.9</b> | <b>4,821</b> | <b>3.2</b> | <b>11,621</b> | <b>7.7</b> | <b>5,038</b> | <b>3.3</b> | <b>151,813</b>    |

Note: "Trimester Prenatal Care Began" excludes the prenatal care experiences of all women whose pregnancies did not result in a live birth.  
Source: California Department of Public Health, Center for Health Statistics, OHIR Vital Statistics Section, 2007

**Percent of Total Live Births by Adequacy of Prenatal Care Utilization Index  
and by Source of Payment for Prenatal Care (PNC)  
Los Angeles County, 2007**



| Los Angeles County, 2007            |   |             |              |            |               |            |              |            |                   |
|-------------------------------------|---|-------------|--------------|------------|---------------|------------|--------------|------------|-------------------|
| Source of Payment for Prenatal Care | Adequacy of Prenatal Care Utilization Index |             |              |            |               |            | Unknown      |            | Total Live Births |
|                                     | Adequate                                    |             | Intermediate |            | Inadequate    |            | Number       | Percent    |                   |
|                                     | Number                                      | Percent     | Number       | Percent    | Number        | Percent    |              |            |                   |
| No Prenatal Care                    | 0   | 0.0         | 0            | 0.0        | 482           | 100.0      | 0            | 0.0        | 482               |
| Private Insurance                   | 51,646                                      | 89.2        | 1,768        | 3.1        | 2,068         | 3.6        | 2,446        | 4.2        | 57,928            |
| Other Govt Programs                 | 2,193                                       | 91.7        | 45           | 1.9        | 109           | 4.6        | 44           | 1.8        | 2,391             |
| Medi-Cal                            | 67,318                                      | 83.5        | 2,802        | 3.5        | 8,307         | 10.3       | 2,151        | 2.7        | 80,578            |
| Self Pay                            | 3,051                                       | 82.8        | 132          | 3.6        | 373           | 10.1       | 131          | 3.6        | 3,687             |
| Other/Unknown                       | 6,125                                       | 90.8        | 74           | 1.1        | 282           | 4.2        | 266          | 3.9        | 6,747             |
| <b>Total</b>                        | <b>130,333</b>                              | <b>85.9</b> | <b>4,821</b> | <b>3.2</b> | <b>11,621</b> | <b>7.7</b> | <b>5,038</b> | <b>3.3</b> | <b>151,813</b>    |

Source: California Department of Public Health, Center for Health Statistics, OHIR Vital Statistics Section, 2007



**TITLE V INDICATOR TEMPLATE**

**INDICATOR:** Percent of Total Live Births by Adequacy of Prenatal Care Utilization (APNCU) Index (Revised)

**DEFINITION:** The percent of live born infants whose mothers received adequate prenatal care as defined by the Adequacy of Prenatal Care Utilization Index (APNCU) developed by Milton Kotelchuck. This index does not assess the quality of the prenatal care that is delivered.

**NUMERATOR:** The number of live births to women who received adequate care, as defined by the APNCU criteria, by place of residence, in a calendar year

**DENOMINATOR:** The total number of live births, by place of residence, in a calendar year

**HEALTHY PEOPLE 2010 OBJECTIVE:**  
 Increase the proportion of all pregnant women who receive early and adequate prenatal care to 90 percent of live births.  
 (Baseline: 74 percent of live births in 1998) (Objective 16-6b)

**RISK FACTORS:** **Inadequate Prenatal Care**  
 Low income; young maternal age/teen pregnancy; low maternal education level; race/ethnicity (African American, Hispanic, American Indian/Alaskan Native); high parity; maternal substance abuse; lack of health insurance; lack of obstetric providers

| Year | California             |         |                         |       | Los Angeles County     |         |                         |       |
|------|------------------------|---------|-------------------------|-------|------------------------|---------|-------------------------|-------|
|      | Adequate Prenatal Care |         | 95% Confidence Interval |       | Adequate Prenatal Care |         | 95% Confidence Interval |       |
|      | Number                 | Percent | Lower                   | Upper | Number                 | Percent | Lower                   | Upper |
| 1998 | 423,143                | 81.2    | 81.1                    | 81.3  | 131,627                | 83.0    | 82.8                    | 83.2  |
| 1999 | 424,820                | 82.0    | 81.9                    | 82.1  | 130,451                | 83.5    | 83.4                    | 83.7  |
| 2000 | 436,261                | 82.1    | 82.0                    | 82.2  | 132,139                | 84.0    | 83.8                    | 84.1  |
| 2001 | 437,754                | 83.0    | 82.9                    | 83.1  | 129,516                | 84.4    | 84.2                    | 84.5  |
| 2002 | 442,146                | 83.5    | 83.4                    | 83.6  | 128,984                | 85.3    | 85.1                    | 85.5  |
| 2003 | 455,424                | 84.2    | 84.1                    | 84.3  | 132,229                | 86.9    | 86.7                    | 87.1  |
| 2004 | 459,050                | 84.3    | 84.2                    | 84.4  | 132,531                | 87.5    | 87.3                    | 87.6  |
| 2005 | 469,208                | 85.5    | 85.4                    | 85.6  | 134,611                | 89.5    | 89.4                    | 89.7  |
| 2006 | 480,255                | 85.4    | 85.3                    | 85.5  | 135,961                | 89.5    | 89.4                    | 89.7  |
| 2007 | N/A                    | N/C     | N/C                     | N/C   | 130,333                | 85.9    | 85.7                    | 86.0  |

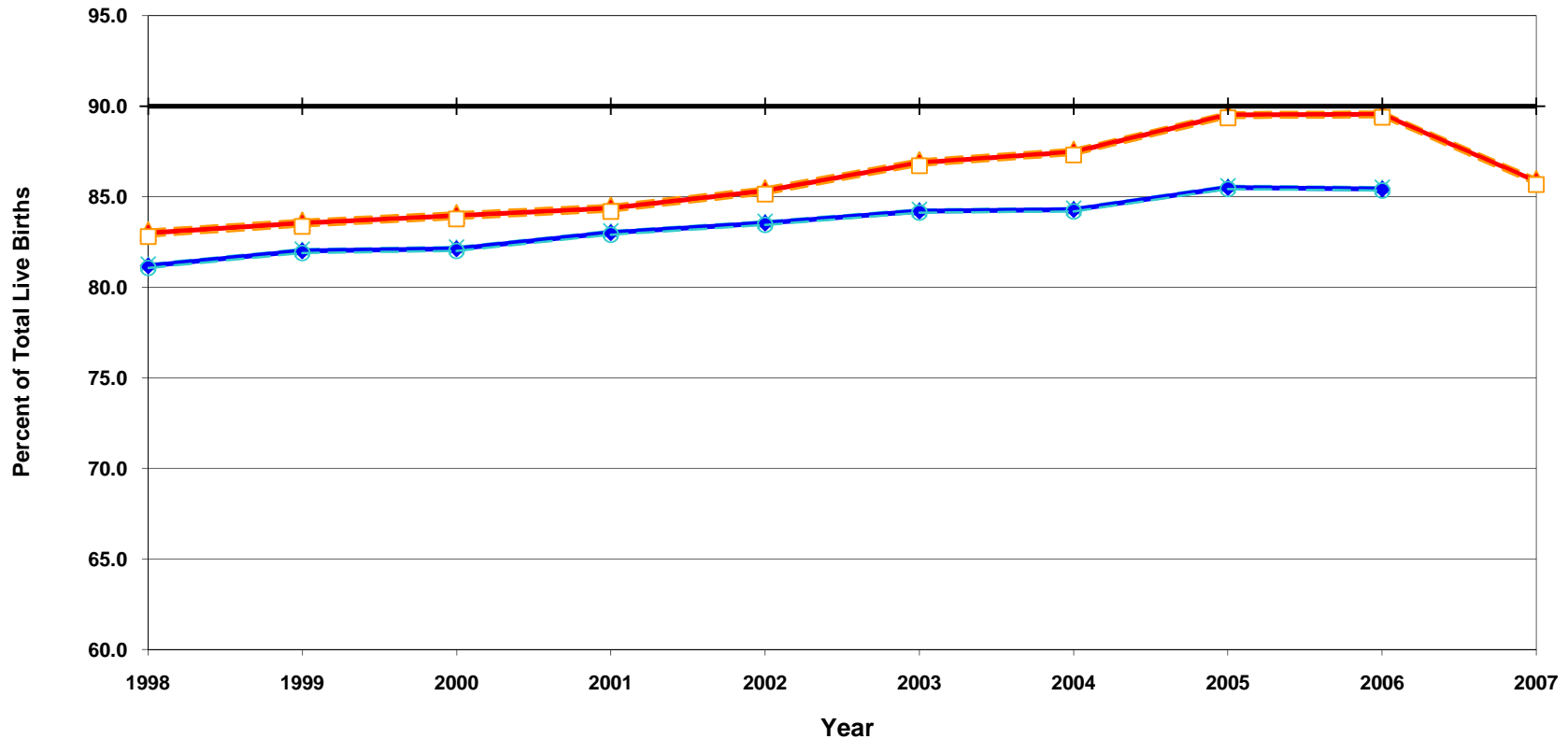
| Denominator:<br>Live Births |            |           |
|-----------------------------|------------|-----------|
| Year                        | California | LA County |
| 1998                        | 521,265    | 158,604   |
| 1999                        | 518,073    | 156,153   |
| 2000                        | 531,285    | 157,391   |
| 2001                        | 527,371    | 153,523   |
| 2002                        | 529,245    | 151,167   |
| 2003                        | 540,827    | 152,192   |
| 2004                        | 544,685    | 151,504   |
| 2005                        | 548,700    | 150,377   |
| 2006                        | 562,157    | 151,837   |
| 2007                        | NA         | 151,813   |

Note: The APNCU Index measures prenatal care utilization, which includes consideration of the month prenatal care began and the number of prenatal care visits during the time mothers actually received prenatal care. This utilization index is based on the recommendations established by the American College of Obstetrics and Gynecologists (ACOG). Appendix A contains the specific criteria for timing and number of prenatal care visits that are used to assign adequacy categories. Due to the change in methodology for calculating the Kotelchuck Index, data presented may not be comparable to those published in previous FHOP reports.

Source: California Department of Public Health, Center for Health Statistics, OHIR Vital Statistics Section, 1998-2007.

**Percent of Total Live Births with "Adequate" Prenatal Care  
as Rated by Kotelchuck (APNCU) Index  
California vs. Los Angeles County, 1998-2007**

Revised



2010 Objective: Increase the proportion of pregnant women who receive early and adequate prenatal care to 90 percent of live births.

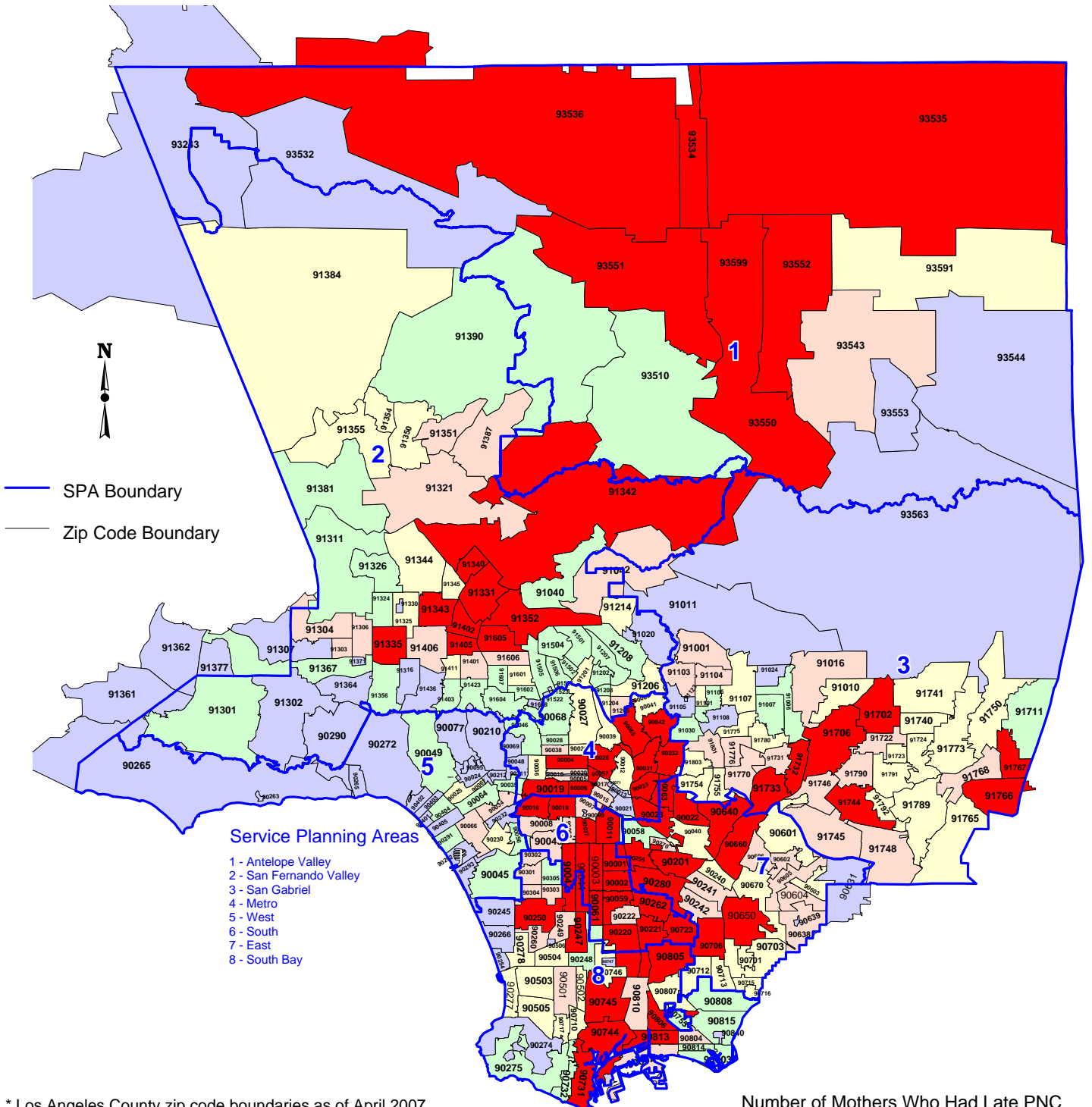
Note: The APNCU Index measures prenatal care utilization, which includes consideration of the month prenatal care began and the number of prenatal care visits during the time mothers actually received prenatal care. This utilization index is based on the recommendations established by the American College of Obstetrics and Gynecologists (ACOG). Appendix A contains the specific criteria for timing and number of prenatal care visits that are used to assign adequacy categories.

Due to the change in methodology for calculating the Kotelchuck Index, data presented may not be comparable to those published in previous FHOP reports.

Source: California Department of Public Health, Center for Health Statistics, OHIR Vital Statistics Section, 1998-2007.

Los Angeles County - Department of Public Health  
**Number of Live Births by Mothers Who Had  
 Late Prenatal Care (PNC)  
 by Zip Code and Service Planning Area (SPA)**

Los Angeles County, 2007



\* Los Angeles County zip code boundaries as of April 2007

Total number of live births in Los Angeles County, 2007 = 151,813

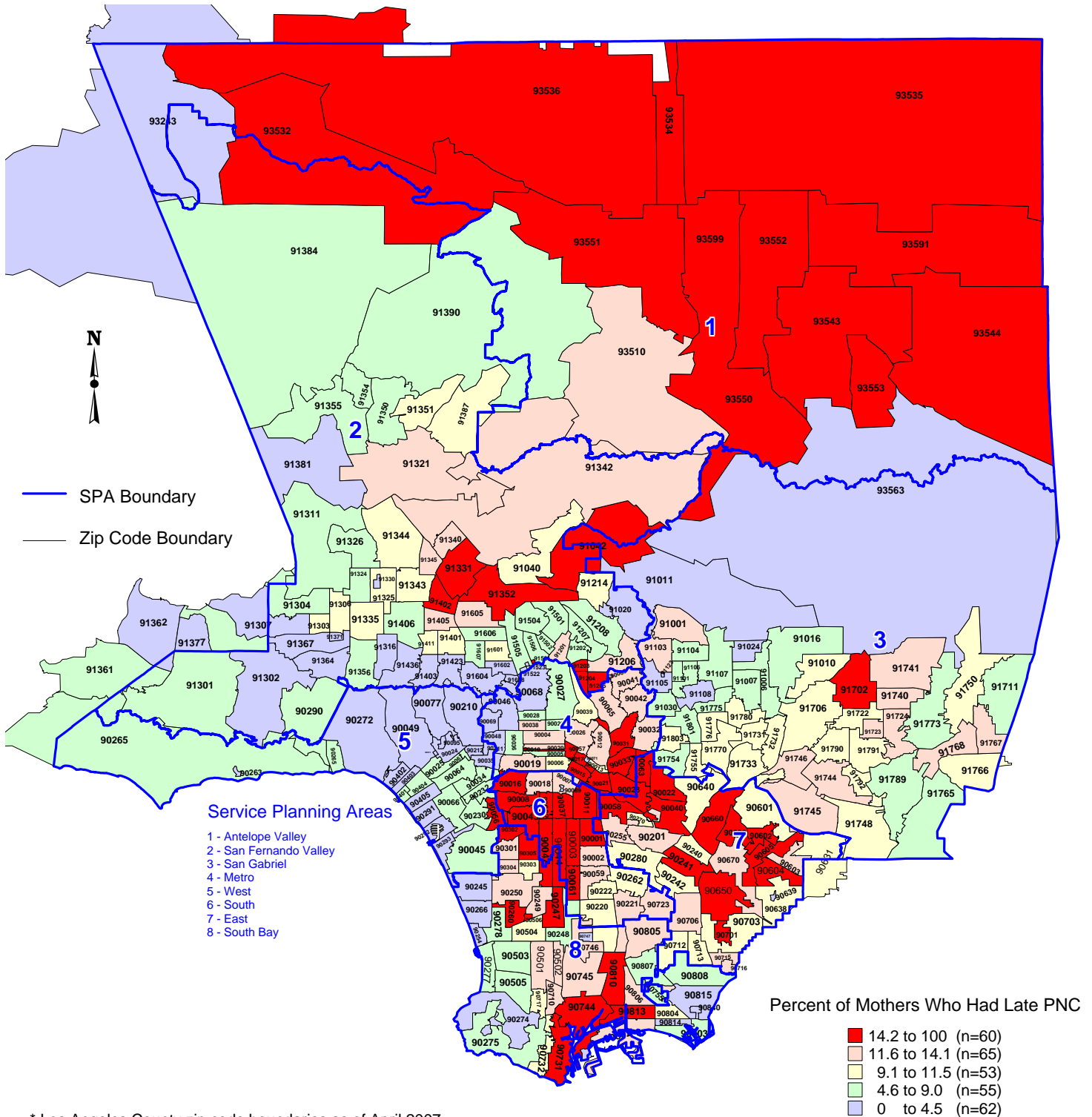
Source: California Department of Health Services  
 Center for Health Statistics, Vital Statistics, 2007

Note: Prenatal care that begins in the second or third trimester is considered late.

n = total number of zip codes in range

Los Angeles County - Department of Public Health  
 Percent of Live Births by Mothers Who Had  
 Late Prenatal Care (PNC)  
 by Zip Code\* and Service Planning Area (SPA)

Los Angeles County, 2007



\* Los Angeles County zip code boundaries as of April 2007

Total number of live births in Los Angeles County, 2007 = 151,813

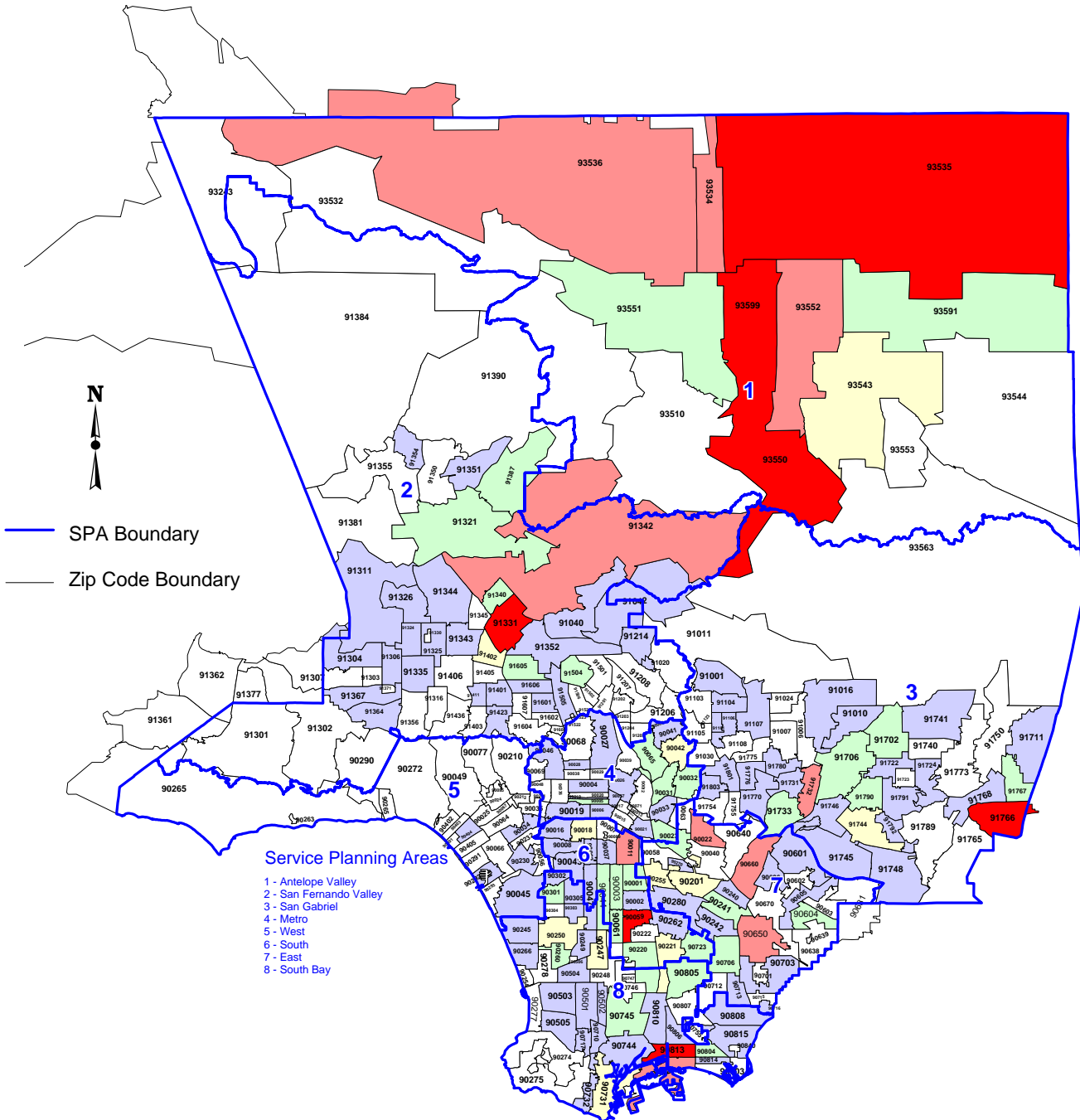
Source: California Department of Health Services  
 Center for Health Statistics, Vital Statistics, 2007

Note: Prenatal care that begins in the second or third trimester is considered late.

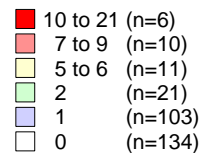
n = total number of zip codes in range

Los Angeles County - Department of Public Health  
**Number of Live Births by Mothers Who Had  
 No Prenatal Care (PNC)  
 by Zip Code and Service Planning Area (SPA)**

Los Angeles County, 2007



Number of Mothers Who Had No PNC



\* Los Angeles County zip code boundaries as of April 2007

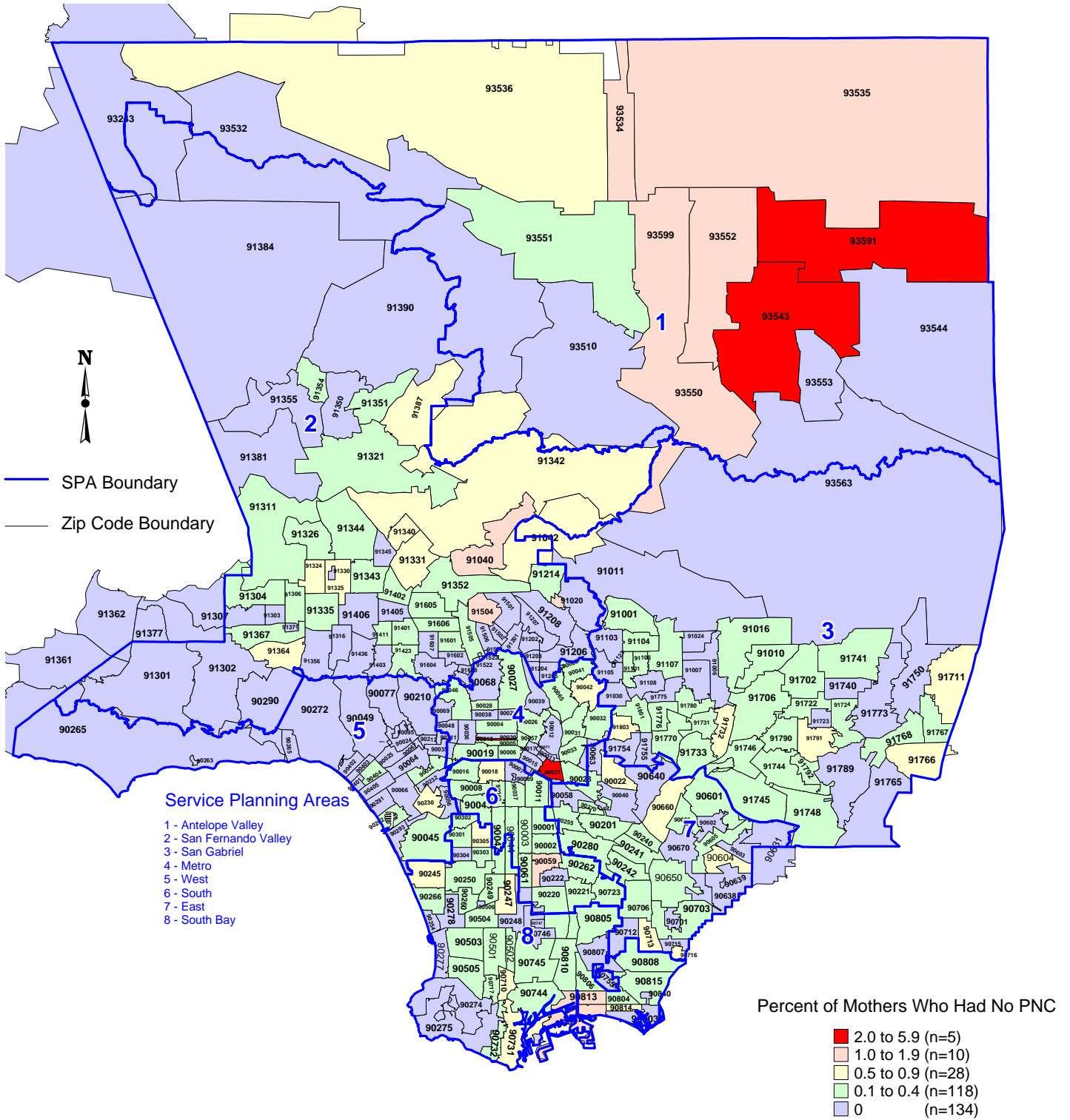
Total number of live births in Los Angeles County, 2007 = 151,8

Source: California Department of Health Services  
 Center for Health Statistics, Vital Statistics, 2007

number of zip codes in range

Los Angeles County - Department of Public Health  
**Percent of Live Births by Mothers Who Had  
 No Prenatal Care (PNC)  
 by Zip Code and Service Planning Area (SPA)**

Los Angeles County, 2007



\* Los Angeles County zip code boundaries as of April 2007

Total number of live births in Los Angeles County, 2007 = 151,813

n = total number of zip codes in range

Source: California Department of Health Services  
 Center for Health Statistics, Vital Statistics, 2007



Los Angeles County - Department of Public Health  
**Entry Into Prenatal Care (PNC) By Zip Code\***  
 Los Angeles County, 2007

| Mother's Residential Zip Code | Mother's Trimester Prenatal Care Began |         |                 |         |                  |         |                 |         |         |         | Total Live Births |
|-------------------------------|--|---------|-----------------|---------|------------------|---------|-----------------|---------|---------|---------|-------------------|
|                               | No Prenatal Care                       |         | First Trimester |         | Second Trimester |         | Third Trimester |         | Unknown |         |                   |
|                               | Number                                 | Percent | Number          | Percent | Number           | Percent | Number          | Percent | Number  | Percent |                   |
| 90001                         | <5                                     | **      | 1176            | 83.6    | 162              | 11.5    | 47              | 3.3     | 18      | 1.3     | 1406              |
| 90002                         | <5                                     | **      | 1051            | 84.6    | 141              | 11.4    | 31              | 2.5     | 17      | 1.4     | 1242              |
| 90003                         | <5                                     | **      | 1369            | 81.0    | 223              | 13.2    | 66              | 3.9     | 29      | 1.7     | 1691              |
| 90004                         | <5                                     | **      | 845             | 87.1    | 99               | 10.2    | 16              | 1.6     | 9       | 0.9     | 970               |
| 90005                         | <5                                     | **      | 605             | 89.1    | 48               | 7.1     | 8               | 1.2     | 15      | 2.2     | 679               |
| 90006                         | <5                                     | **      | 950             | 87.6    | 103              | 9.5     | 22              | 2.0     | 9       | 0.8     | 1085              |
| 90007                         | <5                                     | **      | 513             | 86.2    | 46               | 7.7     | 26              | 4.4     | 10      | 1.7     | 595               |
| 90008                         | <5                                     | **      | 364             | 80.9    | 56               | 12.4    | 14              | 3.1     | 14      | 3.1     | 450               |
| 90010                         | <5                                     | **      | 13              | 72.2    | <5               | **      | <5              | **      | <5      | **      | 18                |
| 90011                         | 9                                      | 0.3     | 2167            | 79.6    | 411              | 15.1    | 73              | 2.7     | 62      | 2.3     | 2722              |
| 90012                         | <5                                     | **      | 226             | 84.3    | 29               | 10.8    | <5              | **      | 10      | 3.7     | 268               |
| 90013                         | <5                                     | **      | 35              | 83.3    | <5               | **      | <5              | **      | <5      | **      | 42                |
| 90014                         | <5                                     | **      | 24              | 72.7    | 6                | 18.2    | <5              | **      | <5      | **      | 33                |
| 90015                         | <5                                     | **      | 238             | 76.5    | 53               | 17.0    | 11              | 3.5     | 9       | 2.9     | 311               |
| 90016                         | <5                                     | **      | 680             | 81.6    | 117              | 14.0    | 13              | 1.6     | 22      | 2.6     | 833               |
| 90017                         | <5                                     | **      | 330             | 79.7    | 63               | 15.2    | 14              | 3.4     | 7       | 1.7     | 414               |
| 90018                         | 6                                      | 0.7     | 690             | 82.1    | 98               | 11.7    | 21              | 2.5     | 25      | 3.0     | 840               |
| 90019                         | <5                                     | **      | 855             | 86.3    | 95               | 9.6     | 22              | 2.2     | 17      | 1.7     | 991               |
| 90020                         | <5                                     | **      | 546             | 86.5    | 64               | 10.1    | 13              | 2.1     | 8       | 1.3     | 631               |
| 90021                         | <5                                     | **      | 29              | 76.3    | 8                | 21.1    | <5              | **      | <5      | **      | 38                |
| 90022                         | 8                                      | 0.6     | 1115            | 82.0    | 157              | 11.5    | 39              | 2.9     | 41      | 3.0     | 1360              |
| 90023                         | <5                                     | **      | 841             | 80.3    | 147              | 14.0    | 29              | 2.8     | 27      | 2.6     | 1047              |
| 90024                         | <5                                     | **      | 280             | 94.0    | 7                | 2.3     | <5              | **      | 10      | 3.4     | 298               |
| 90025                         | <5                                     | **      | 437             | 89.9    | 25               | 5.1     | <5              | **      | 20      | 4.1     | 486               |
| 90026                         | <5                                     | **      | 856             | 86.0    | 95               | 9.5     | 27              | 2.7     | 16      | 1.6     | 995               |
| 90027                         | <5                                     | **      | 413             | 90.4    | 29               | 6.3     | <5              | **      | 9       | 2.0     | 457               |
| 90028                         | <5                                     | **      | 262             | 90.3    | 20               | 6.9     | <5              | **      | <5      | **      | 290               |
| 90029                         | <5                                     | **      | 537             | 91.5    | 39               | 6.6     | 9               | 1.5     | <5      | **      | 587               |
| 90031                         | <5                                     | **      | 542             | 82.1    | 98               | 14.8    | 12              | 1.8     | <5      | **      | 660               |
| 90032                         | <5                                     | **      | 650             | 82.7    | 90               | 11.5    | 20              | 2.5     | 23      | 2.9     | 786               |
| 90033                         | <5                                     | **      | 858             | 80.1    | 159              | 14.8    | 36              | 3.4     | 16      | 1.5     | 1071              |
| 90034                         | <5                                     | **      | 728             | 88.9    | 60               | 7.3     | <5              | **      | 25      | 3.1     | 819               |
| 90035                         | <5                                     | **      | 334             | 92.3    | 12               | 3.3     | <5              | **      | 14      | 3.9     | 362               |
| 90036                         | <5                                     | **      | 423             | 90.0    | 25               | 5.3     | <5              | **      | 18      | 3.8     | 470               |
| 90037                         | <5                                     | **      | 1106            | 79.9    | 188              | 13.6    | 54              | 3.9     | 35      | 2.5     | 1384              |
| 90038                         | <5                                     | **      | 338             | 86.4    | 44               | 11.3    | <5              | **      | <5      | **      | 391               |
| 90039                         | <5                                     | **      | 329             | 88.4    | 29               | 7.8     | 7               | 1.9     | 7       | 1.9     | 372               |
| 90040                         | <5                                     | **      | 210             | 83.3    | 26               | 10.3    | 12              | 4.8     | <5      | **      | 252               |
| 90041                         | <5                                     | **      | 276             | 85.2    | 36               | 11.1    | <5              | **      | 7       | 2.2     | 324               |
| 90042                         | 6                                      | 0.6     | 887             | 82.8    | 120              | 11.2    | 26              | 2.4     | 32      | 3.0     | 1071              |
| 90043                         | <5                                     | **      | 517             | 83.9    | 77               | 12.5    | 12              | 1.9     | 9       | 1.5     | 616               |
| 90044                         | <5                                     | **      | 1606            | 80.7    | 302              | 15.2    | 52              | 2.6     | 25      | 1.3     | 1989              |
| 90045                         | <5                                     | **      | 397             | 91.1    | 19               | 4.4     | <5              | **      | 16      | 3.7     | 436               |
| 90046                         | <5                                     | **      | 312             | 93.7    | 11               | 3.3     | <5              | **      | 7       | 2.1     | 333               |
| 90047                         | <5                                     | **      | 590             | 80.1    | 110              | 14.9    | 23              | 3.1     | 12      | 1.6     | 737               |
| 90048                         | <5                                     | **      | 194             | 98.0    | <5               | **      | <5              | **      | <5      | **      | 198               |
| 90049                         | <5                                     | **      | 336             | 93.3    | 9                | 2.5     | <5              | **      | 14      | 3.9     | 360               |
| 90056                         | <5                                     | **      | 61              | 82.4    | 13               | 17.6    | <5              | **      | <5      | **      | 74                |
| 90057                         | <5                                     | **      | 724             | 81.3    | 126              | 14.1    | 20              | 2.2     | 19      | 2.1     | 891               |



Los Angeles County - Department of Public Health  
**Entry Into Prenatal Care (PNC) By Zip Code\***  
 Los Angeles County, 2007

| Mother's Residential Zip Code | Mother's Trimester Prenatal Care Began |         |                 |         |                  |         |                 |         |         |         | Total Live Births |
|-------------------------------|--|---------|-----------------|---------|------------------|---------|-----------------|---------|---------|---------|-------------------|
|                               | No Prenatal Care                       |         | First Trimester |         | Second Trimester |         | Third Trimester |         | Unknown |         |                   |
|                               | Number                                 | Percent | Number          | Percent | Number           | Percent | Number          | Percent | Number  | Percent |                   |
| 90058                         | <5                                     | **      | 68              | 80.0    | 14               | 16.5    | <5              | **      | <5      | **      | 85                |
| 90059                         | 11                                     | 1.1     | 831             | 84.5    | 118              | 12.0    | 16              | 1.6     | 8       | 0.8     | 984               |
| 90061                         | <5                                     | **      | 507             | 82.3    | 81               | 13.1    | 17              | 2.8     | 8       | 1.3     | 616               |
| 90062                         | <5                                     | **      | 480             | 81.2    | 75               | 12.7    | 19              | 3.2     | 16      | 2.7     | 591               |
| 90063                         | <5                                     | **      | 948             | 82.3    | 139              | 12.1    | 34              | 3.0     | 31      | 2.7     | 1152              |
| 90064                         | <5                                     | **      | 273             | 91.9    | 12               | 4.0     | <5              | **      | 10      | 3.4     | 297               |
| 90065                         | <5                                     | **      | 665             | 85.3    | 88               | 11.3    | 17              | 2.2     | 7       | 0.9     | 780               |
| 90066                         | <5                                     | **      | 772             | 90.1    | 52               | 6.1     | 6               | 0.7     | 27      | 3.2     | 857               |
| 90067                         | <5                                     | **      | 28              | 90.3    | <5               | **      | <5              | **      | <5      | **      | 31                |
| 90068                         | <5                                     | **      | 209             | 92.5    | 9                | 4.0     | <5              | **      | 8       | 3.5     | 226               |
| 90069                         | <5                                     | **      | 110             | 94.0    | <5               | **      | <5              | **      | <5      | **      | 117               |
| 90071                         | <5                                     | **      | <5              | **      | <5               | **      | <5              | **      | <5      | **      | 4                 |
| 90077                         | <5                                     | **      | 75              | 85.2    | <5               | **      | <5              | **      | 9       | 10.2    | 88                |
| 90089                         | <5                                     | **      | <5              | **      | <5               | **      | <5              | **      | <5      | **      | 1                 |
| 90095                         | <5                                     | **      | <5              | **      | <5               | **      | <5              | **      | <5      | **      | 2                 |
| 90201                         | <5                                     | **      | 1839            | 85.8    | 217              | 10.1    | 43              | 2.0     | 39      | 1.8     | 2143              |
| 90210                         | <5                                     | **      | 192             | 95.5    | <5               | **      | <5              | **      | 7       | 3.5     | 201               |
| 90211                         | <5                                     | **      | 74              | 94.9    | <5               | **      | <5              | **      | <5      | **      | 78                |
| 90212                         | <5                                     | **      | 99              | 93.4    | <5               | **      | <5              | **      | 6       | 5.7     | 106               |
| 90220                         | <5                                     | **      | 947             | 86.9    | 107              | 9.8     | 19              | 1.7     | 13      | 1.2     | 1090              |
| 90221                         | <5                                     | **      | 1200            | 86.2    | 143              | 10.3    | 33              | 2.4     | 11      | 0.8     | 1392              |
| 90222                         | <5                                     | **      | 595             | 88.8    | 48               | 7.2     | 17              | 2.5     | 10      | 1.5     | 670               |
| 90230                         | <5                                     | **      | 332             | 90.0    | 21               | 5.7     | 6               | 1.6     | 8       | 2.2     | 369               |
| 90232                         | <5                                     | **      | 144             | 88.9    | <5               | **      | <5              | **      | 10      | 6.2     | 162               |
| 90240                         | <5                                     | **      | 312             | 88.6    | 29               | 8.2     | 8               | 2.3     | <5      | **      | 352               |
| 90241                         | <5                                     | **      | 581             | 84.9    | 86               | 12.6    | 10              | 1.5     | <5      | **      | 684               |
| 90242                         | <5                                     | **      | 595             | 88.4    | 63               | 9.4     | 10              | 1.5     | <5      | **      | 673               |
| 90245                         | <5                                     | **      | 179             | 93.7    | 8                | 4.2     | <5              | **      | <5      | **      | 191               |
| 90247                         | 6                                      | 0.7     | 680             | 83.7    | 105              | 12.9    | 19              | 2.3     | <5      | **      | 812               |
| 90248                         | <5                                     | **      | 123             | 90.4    | 12               | 8.8     | <5              | **      | <5      | **      | 136               |
| 90249                         | <5                                     | **      | 357             | 86.0    | 44               | 10.6    | 8               | 1.9     | <5      | **      | 415               |
| 90250                         | 6                                      | 0.4     | 1430            | 85.3    | 190              | 11.3    | 39              | 2.3     | 12      | 0.7     | 1677              |
| 90254                         | <5                                     | **      | 194             | 96.0    | <5               | **      | <5              | **      | <5      | **      | 202               |
| 90255                         | <5                                     | **      | 1417            | 86.4    | 154              | 9.4     | 38              | 2.3     | 26      | 1.6     | 1640              |
| 90260                         | <5                                     | **      | 512             | 83.5    | 71               | 11.6    | 21              | 3.4     | 6       | 1.0     | 613               |
| 90262                         | <5                                     | **      | 1353            | 88.4    | 132              | 8.6     | 27              | 1.8     | 17      | 1.1     | 1530              |
| 90263                         | <5                                     | **      | <5              | **      | <5               | **      | <5              | **      | <5      | **      | 2                 |
| 90265                         | <5                                     | **      | 118             | 90.8    | 6                | 4.6     | <5              | **      | 6       | 4.6     | 130               |
| 90266                         | <5                                     | **      | 387             | 97.0    | <5               | **      | <5              | **      | 7       | 1.8     | 399               |
| 90270                         | <5                                     | **      | 487             | 88.2    | 50               | 9.1     | 9               | 1.6     | <5      | **      | 552               |
| 90272                         | <5                                     | **      | 174             | 91.1    | 6                | 3.1     | <5              | **      | 10      | 5.2     | 191               |
| 90274                         | <5                                     | **      | 140             | 95.9    | <5               | **      | <5              | **      | <5      | **      | 146               |
| 90275                         | <5                                     | **      | 240             | 90.9    | 20               | 7.6     | <5              | **      | <5      | **      | 264               |
| 90277                         | <5                                     | **      | 329             | 92.4    | 24               | 6.7     | <5              | **      | <5      | **      | 356               |
| 90278                         | <5                                     | **      | 569             | 94.2    | 30               | 5.0     | <5              | **      | <5      | **      | 604               |
| 90280                         | <5                                     | **      | 1600            | 87.9    | 158              | 8.7     | 37              | 2.0     | 23      | 1.3     | 1820              |
| 90290                         | <5                                     | **      | 47              | 85.5    | <5               | **      | <5              | **      | <5      | **      | 55                |
| 90291                         | <5                                     | **      | 319             | 93.3    | 10               | 2.9     | <5              | **      | 10      | 2.9     | 342               |
| 90292                         | <5                                     | **      | 199             | 94.3    | <5               | **      | <5              | **      | <5      | **      | 211               |



Los Angeles County - Department of Public Health  
**Entry Into Prenatal Care (PNC) By Zip Code\***  
 Los Angeles County, 2007

| Mother's Residential Zip Code | Mother's Trimester Prenatal Care Began |         |                 |         |                  |         |                 |         |         |         | Total Live Births |
|-------------------------------|--|---------|-----------------|---------|------------------|---------|-----------------|---------|---------|---------|-------------------|
|                               | No Prenatal Care                       |         | First Trimester |         | Second Trimester |         | Third Trimester |         | Unknown |         |                   |
|                               | Number                                 | Percent | Number          | Percent | Number           | Percent | Number          | Percent | Number  | Percent |                   |
| 90293                         | <5                                     | **      | 124             | 92.5    | <5               | **      | <5              | **      | <5      | **      | 134               |
| 90301                         | <5                                     | **      | 588             | 84.0    | 81               | 11.6    | 16              | 2.3     | 12      | 1.7     | 700               |
| 90302                         | <5                                     | **      | 400             | 81.6    | 66               | 13.5    | 14              | 2.9     | 9       | 1.8     | 490               |
| 90303                         | <5                                     | **      | 421             | 86.6    | 42               | 8.6     | 13              | 2.7     | 8       | 1.6     | 486               |
| 90304                         | <5                                     | **      | 533             | 86.1    | 71               | 11.5    | 10              | 1.6     | <5      | **      | 619               |
| 90305                         | <5                                     | **      | 130             | 83.9    | 20               | 12.9    | <5              | **      | <5      | **      | 155               |
| 90401                         | <5                                     | **      | 53              | 88.3    | <5               | **      | <5              | **      | <5      | **      | 60                |
| 90402                         | <5                                     | **      | 91              | 96.8    | <5               | **      | <5              | **      | <5      | **      | 94                |
| 90403                         | <5                                     | **      | 226             | 92.6    | 7                | 2.9     | <5              | **      | 10      | 4.1     | 244               |
| 90404                         | <5                                     | **      | 181             | 84.6    | 13               | 6.1     | <5              | **      | 17      | 7.9     | 214               |
| 90405                         | <5                                     | **      | 256             | 93.1    | 6                | 2.2     | <5              | **      | 12      | 4.4     | 275               |
| 90501                         | <5                                     | **      | 592             | 85.7    | 81               | 11.7    | 9               | 1.3     | 7       | 1.0     | 691               |
| 90502                         | <5                                     | **      | 214             | 85.3    | 30               | 12.0    | <5              | **      | <5      | **      | 251               |
| 90503                         | <5                                     | **      | 457             | 90.7    | 36               | 7.1     | <5              | **      | <5      | **      | 504               |
| 90504                         | <5                                     | **      | 312             | 88.4    | 33               | 9.3     | 6               | 1.7     | <5      | **      | 353               |
| 90505                         | <5                                     | **      | 310             | 90.6    | 26               | 7.6     | <5              | **      | <5      | **      | 342               |
| 90506                         | <5                                     | **      | <5              | **      | <5               | **      | <5              | **      | <5      | **      | 2                 |
| 90601                         | <5                                     | **      | 396             | 88.6    | 45               | 10.1    | <5              | **      | <5      | **      | 447               |
| 90602                         | <5                                     | **      | 378             | 83.1    | 64               | 14.1    | 10              | 2.2     | <5      | **      | 455               |
| 90603                         | <5                                     | **      | 176             | 86.3    | 23               | 11.3    | <5              | **      | <5      | **      | 204               |
| 90604                         | <5                                     | **      | 473             | 83.1    | 77               | 13.5    | 10              | 1.8     | <5      | **      | 569               |
| 90605                         | <5                                     | **      | 533             | 84.9    | 81               | 12.9    | 10              | 1.6     | <5      | **      | 628               |
| 90606                         | <5                                     | **      | 416             | 79.7    | 84               | 16.1    | 12              | 2.3     | 8       | 1.5     | 522               |
| 90631                         | <5                                     | **      | 43              | 89.6    | <5               | **      | <5              | **      | <5      | **      | 48                |
| 90638                         | <5                                     | **      | 469             | 88.3    | 46               | 8.7     | 10              | 1.9     | 6       | 1.1     | 531               |
| 90640                         | <5                                     | **      | 859             | 85.9    | 100              | 10.0    | 15              | 1.5     | 26      | 2.6     | 1000              |
| 90650                         | 7                                      | 0.4     | 1474            | 83.3    | 233              | 13.2    | 43              | 2.4     | 12      | 0.7     | 1769              |
| 90660                         | 8                                      | 0.8     | 853             | 82.0    | 149              | 14.3    | 16              | 1.5     | 14      | 1.3     | 1040              |
| 90670                         | <5                                     | **      | 197             | 86.0    | 25               | 10.9    | 6               | 2.6     | <5      | **      | 229               |
| 90701                         | <5                                     | **      | 173             | 80.5    | 36               | 16.7    | <5              | **      | <5      | **      | 215               |
| 90703                         | <5                                     | **      | 362             | 89.2    | 28               | 6.9     | 9               | 2.2     | 6       | 1.5     | 406               |
| 90704                         | <5                                     | **      | 39              | 84.8    | <5               | **      | <5              | **      | <5      | **      | 46                |
| 90706                         | <5                                     | **      | 1017            | 84.8    | 139              | 11.6    | 28              | 2.3     | 12      | 1.0     | 1199              |
| 90710                         | <5                                     | **      | 338             | 86.4    | 43               | 11.0    | <5              | **      | <5      | **      | 391               |
| 90712                         | <5                                     | **      | 397             | 90.6    | 37               | 8.4     | <5              | **      | <5      | **      | 438               |
| 90713                         | <5                                     | **      | 281             | 90.1    | 26               | 8.3     | <5              | **      | <5      | **      | 312               |
| 90715                         | <5                                     | **      | 289             | 84.8    | 42               | 12.3    | 6               | 1.8     | <5      | **      | 341               |
| 90716                         | <5                                     | **      | 259             | 84.9    | 33               | 10.8    | 10              | 3.3     | <5      | **      | 305               |
| 90717                         | <5                                     | **      | 256             | 87.7    | 27               | 9.2     | <5              | **      | <5      | **      | 292               |
| 90723                         | <5                                     | **      | 974             | 85.3    | 128              | 11.2    | 29              | 2.5     | 8       | 0.7     | 1142              |
| 90731                         | <5                                     | **      | 668             | 76.6    | 169              | 19.4    | 25              | 2.9     | <5      | **      | 872               |
| 90732                         | <5                                     | **      | 214             | 89.9    | 16               | 6.7     | 6               | 2.5     | <5      | **      | 238               |
| 90744                         | <5                                     | **      | 918             | 83.2    | 146              | 13.2    | 25              | 2.3     | 13      | 1.2     | 1104              |
| 90745                         | <5                                     | **      | 692             | 85.5    | 96               | 11.9    | 14              | 1.7     | <5      | **      | 809               |
| 90746                         | <5                                     | **      | 245             | 86.9    | 24               | 8.5     | 9               | 3.2     | <5      | **      | 282               |
| 90802                         | 7                                      | 1.2     | 485             | 84.5    | 59               | 10.3    | 13              | 2.3     | 10      | 1.7     | 574               |

Los Angeles County - Department of Public Health  
**Entry Into Prenatal Care (PNC) By Zip Code\***  
 Los Angeles County, 2007

| Mother's Residential Zip Code | Mother's Trimester Prenatal Care Began |         |                 |         |                  |         |                 |         |         |         | Total Live Births |
|-------------------------------|--|---------|-----------------|---------|------------------|---------|-----------------|---------|---------|---------|-------------------|
|                               | No Prenatal Care                       |         | First Trimester |         | Second Trimester |         | Third Trimester |         | Unknown |         |                   |
|                               | Number                                 | Percent | Number          | Percent | Number           | Percent | Number          | Percent | Number  | Percent |                   |
| 90803                         | <5                                     | **      | 241             | 93.4    | 14               | 5.4     | <5              | **      | <5      | **      | 258               |
| 90804                         | <5                                     | **      | 636             | 88.2    | 60               | 8.3     | 17              | 2.4     | <5      | **      | 721               |
| 90805                         | <5                                     | **      | 1616            | 87.4    | 188              | 10.2    | 31              | 1.7     | 10      | 0.5     | 1848              |
| 90806                         | <5                                     | **      | 863             | 86.9    | 97               | 9.8     | 17              | 1.7     | 15      | 1.5     | 993               |
| 90807                         | <5                                     | **      | 366             | 91.5    | 29               | 7.3     | <5              | **      | <5      | **      | 400               |
| 90808                         | <5                                     | **      | 367             | 94.8    | 15               | 3.9     | <5              | **      | <5      | **      | 387               |
| 90810                         | <5                                     | **      | 511             | 84.2    | 70               | 11.5    | 17              | 2.8     | 8       | 1.3     | 607               |
| 90813                         | 17                                     | 1.2     | 1148            | 80.6    | 189              | 13.3    | 45              | 3.2     | 25      | 1.8     | 1424              |
| 90814                         | <5                                     | **      | 190             | 94.5    | 8                | 4.0     | <5              | **      | <5      | **      | 201               |
| 90815                         | <5                                     | **      | 378             | 95.0    | 12               | 3.0     | <5              | **      | <5      | **      | 398               |
| 90840                         | <5                                     | **      | <5              | **      | <5               | **      | <5              | **      | <5      | **      | 1                 |
| 91001                         | <5                                     | **      | 403             | 79.3    | 56               | 11.0    | 7               | 1.4     | 41      | 8.1     | 508               |
| 91006                         | <5                                     | **      | 316             | 92.4    | 10               | 2.9     | 9               | 2.6     | 7       | 2.0     | 342               |
| 91007                         | <5                                     | **      | 321             | 92.8    | 17               | 4.9     | <5              | **      | <5      | **      | 346               |
| 91010                         | <5                                     | **      | 341             | 87.4    | 42               | 10.8    | <5              | **      | <5      | **      | 390               |
| 91011                         | <5                                     | **      | 104             | 92.0    | <5               | **      | <5              | **      | 8       | 7.1     | 113               |
| 91016                         | <5                                     | **      | 546             | 88.8    | 46               | 7.5     | 8               | 1.3     | 13      | 2.1     | 615               |
| 91020                         | <5                                     | **      | 67              | 90.5    | <5               | **      | <5              | **      | <5      | **      | 74                |
| 91024                         | <5                                     | **      | 90              | 94.7    | <5               | **      | <5              | **      | <5      | **      | 95                |
| 91030                         | <5                                     | **      | 197             | 85.7    | 11               | 4.8     | <5              | **      | 20      | 8.7     | 230               |
| 91040                         | <5                                     | **      | 172             | 85.1    | 16               | 7.9     | <5              | **      | 9       | 4.5     | 202               |
| 91042                         | <5                                     | **      | 319             | 82.6    | 50               | 13.0    | 10              | 2.6     | <5      | **      | 386               |
| 91101                         | <5                                     | **      | 259             | 84.1    | 22               | 7.1     | <5              | **      | 21      | 6.8     | 308               |
| 91103                         | <5                                     | **      | 366             | 79.6    | 49               | 10.7    | <5              | **      | 40      | 8.7     | 460               |
| 91104                         | <5                                     | **      | 482             | 83.5    | 43               | 7.5     | 6               | 1.0     | 44      | 7.6     | 577               |
| 91105                         | <5                                     | **      | 98              | 89.9    | <5               | **      | <5              | **      | 7       | 6.4     | 109               |
| 91106                         | <5                                     | **      | 309             | 86.8    | 18               | 5.1     | <5              | **      | 24      | 6.7     | 356               |
| 91107                         | <5                                     | **      | 359             | 88.0    | 28               | 6.9     | <5              | **      | 20      | 4.9     | 408               |
| 91108                         | <5                                     | **      | 99              | 87.6    | <5               | **      | <5              | **      | 10      | 8.8     | 113               |
| 91201                         | <5                                     | **      | 210             | 85.4    | 27               | 11.0    | <5              | **      | <5      | **      | 246               |
| 91202                         | <5                                     | **      | 237             | 88.1    | 20               | 7.4     | <5              | **      | 9       | 3.3     | 269               |
| 91203                         | <5                                     | **      | 134             | 84.3    | 22               | 13.8    | <5              | **      | <5      | **      | 159               |
| 91204                         | <5                                     | **      | 171             | 78.8    | 39               | 18.0    | <5              | **      | <5      | **      | 217               |
| 91205                         | <5                                     | **      | 357             | 83.2    | 59               | 13.8    | 8               | 1.9     | <5      | **      | 429               |
| 91206                         | <5                                     | **      | 291             | 85.8    | 40               | 11.8    | <5              | **      | <5      | **      | 339               |
| 91207                         | <5                                     | **      | 87              | 87.9    | 8                | 8.1     | <5              | **      | <5      | **      | 99                |
| 91208                         | <5                                     | **      | 157             | 91.8    | 7                | 4.1     | <5              | **      | <5      | **      | 171               |
| 91214                         | <5                                     | **      | 208             | 87.4    | 20               | 8.4     | <5              | **      | <5      | **      | 238               |
| 91301                         | <5                                     | **      | 183             | 92.9    | 12               | 6.1     | <5              | **      | <5      | **      | 197               |
| 91302                         | <5                                     | **      | 194             | 92.8    | <5               | **      | <5              | **      | 10      | 4.8     | 209               |
| 91303                         | <5                                     | **      | 477             | 89.8    | 34               | 6.4     | 15              | 2.8     | <5      | **      | 531               |
| 91304                         | <5                                     | **      | 644             | 91.7    | 43               | 6.1     | 6               | 0.9     | 7       | 1.0     | 702               |
| 91306                         | <5                                     | **      | 643             | 89.7    | 60               | 8.4     | 7               | 1.0     | 6       | 0.8     | 717               |
| 91307                         | <5                                     | **      | 218             | 94.8    | <5               | **      | <5              | **      | <5      | **      | 230               |
| 91311                         | <5                                     | **      | 341             | 93.4    | 16               | 4.4     | <5              | **      | <5      | **      | 365               |
| 91316                         | <5                                     | **      | 344             | 95.3    | 6                | 1.7     | <5              | **      | 9       | 2.5     | 361               |
| 91321                         | <5                                     | **      | 559             | 86.3    | 68               | 10.5    | 8               | 1.2     | 10      | 1.5     | 648               |
| 91324                         | <5                                     | **      | 307             | 92.2    | 16               | 4.8     | <5              | **      | 6       | 1.8     | 333               |
| 91325                         | <5                                     | **      | 331             | 89.5    | 28               | 7.6     | 7               | 1.9     | <5      | **      | 370               |

Los Angeles County - Department of Public Health  
**Entry Into Prenatal Care (PNC) By Zip Code\***  
 Los Angeles County, 2007

| Mother's Residential Zip Code | Mother's Trimester Prenatal Care Began |         |                 |         |                  |         |                 |         |         |         | Total Live Births |
|-------------------------------|--|---------|-----------------|---------|------------------|---------|-----------------|---------|---------|---------|-------------------|
|                               | No Prenatal Care                       |         | First Trimester |         | Second Trimester |         | Third Trimester |         | Unknown |         |                   |
|                               | Number                                 | Percent | Number          | Percent | Number           | Percent | Number          | Percent | Number  | Percent |                   |
| 91326                         | <5                                     | **      | 267             | 92.4    | 13               | 4.5     | <5              | **      | 7       | 2.4     | 289               |
| 91331                         | 11                                     | 0.5     | 1792            | 83.6    | 272              | 12.7    | 55              | 2.6     | 13      | 0.6     | 2143              |
| 91335                         | <5                                     | **      | 1025            | 89.5    | 88               | 7.7     | 18              | 1.6     | 12      | 1.0     | 1145              |
| 91340                         | <5                                     | **      | 623             | 85.5    | 85               | 11.7    | 16              | 2.2     | <5      | **      | 729               |
| 91342                         | 8                                      | 0.5     | 1363            | 85.3    | 173              | 10.8    | 42              | 2.6     | 12      | 0.8     | 1598              |
| 91343                         | <5                                     | **      | 920             | 88.1    | 95               | 9.1     | 23              | 2.2     | <5      | **      | 1044              |
| 91344                         | <5                                     | **      | 425             | 88.5    | 34               | 7.1     | 11              | 2.3     | 8       | 1.7     | 480               |
| 91345                         | <5                                     | **      | 218             | 86.9    | 22               | 8.8     | 9               | 3.6     | <5      | **      | 251               |
| 91350                         | <5                                     | **      | 374             | 91.7    | 29               | 7.1     | <5              | **      | <5      | **      | 408               |
| 91351                         | <5                                     | **      | 461             | 87.8    | 50               | 9.5     | 6               | 1.1     | 7       | 1.3     | 525               |
| 91352                         | <5                                     | **      | 705             | 83.3    | 96               | 11.3    | 24              | 2.8     | 19      | 2.2     | 846               |
| 91354                         | <5                                     | **      | 320             | 91.2    | 24               | 6.8     | <5              | **      | <5      | **      | 351               |
| 91355                         | <5                                     | **      | 367             | 91.8    | 29               | 7.3     | <5              | **      | <5      | **      | 400               |
| 91356                         | <5                                     | **      | 296             | 92.5    | 19               | 5.9     | <5              | **      | <5      | **      | 320               |
| 91361                         | <5                                     | **      | 33              | 91.7    | <5               | **      | <5              | **      | <5      | **      | 36                |
| 91362                         | <5                                     | **      | <5              | **      | <5               | **      | <5              | **      | <5      | **      | 4                 |
| 91364                         | <5                                     | **      | 245             | 92.8    | <5               | **      | <5              | **      | 12      | 4.5     | 264               |
| 91367                         | <5                                     | **      | 329             | 93.5    | 15               | 4.3     | <5              | **      | 6       | 1.7     | 352               |
| 91381                         | <5                                     | **      | 256             | 94.5    | 12               | 4.4     | <5              | **      | <5      | **      | 271               |
| 91384                         | <5                                     | **      | 269             | 90.9    | 23               | 7.8     | <5              | **      | <5      | **      | 296               |
| 91387                         | <5                                     | **      | 510             | 87.3    | 54               | 9.2     | 9               | 1.5     | 8       | 1.4     | 584               |
| 91390                         | <5                                     | **      | 191             | 92.7    | 12               | 5.8     | <5              | **      | <5      | **      | 206               |
| 91401                         | <5                                     | **      | 473             | 88.1    | 44               | 8.2     | 11              | 2.0     | 7       | 1.3     | 537               |
| 91402                         | <5                                     | **      | 1247            | 84.3    | 179              | 12.1    | 39              | 2.6     | 9       | 0.6     | 1479              |
| 91403                         | <5                                     | **      | 307             | 93.3    | 10               | 3.0     | <5              | **      | 10      | 3.0     | 329               |
| 91405                         | <5                                     | **      | 840             | 87.0    | 95               | 9.8     | 18              | 1.9     | 13      | 1.3     | 966               |
| 91406                         | <5                                     | **      | 787             | 88.9    | 70               | 7.9     | 10              | 1.1     | 18      | 2.0     | 885               |
| 91411                         | <5                                     | **      | 370             | 88.5    | 34               | 8.1     | 7               | 1.7     | 6       | 1.4     | 418               |
| 91423                         | <5                                     | **      | 325             | 93.1    | 10               | 2.9     | <5              | **      | 12      | 3.4     | 349               |
| 91436                         | <5                                     | **      | 148             | 93.7    | <5               | **      | <5              | **      | 8       | 5.1     | 158               |
| 91501                         | <5                                     | **      | 197             | 92.1    | 12               | 5.6     | <5              | **      | <5      | **      | 214               |
| 91502                         | <5                                     | **      | 113             | 89.7    | 7                | 5.6     | <5              | **      | <5      | **      | 126               |
| 91504                         | <5                                     | **      | 267             | 91.8    | 12               | 4.1     | <5              | **      | 7       | 2.4     | 291               |
| 91505                         | <5                                     | **      | 301             | 89.6    | 15               | 4.5     | 7               | 2.1     | 12      | 3.6     | 336               |
| 91506                         | <5                                     | **      | 169             | 90.9    | 12               | 6.5     | <5              | **      | <5      | **      | 186               |
| 91521                         | <5                                     | **      | <5              | **      | <5               | **      | <5              | **      | <5      | **      | 1                 |
| 91523                         | <5                                     | **      | <5              | **      | <5               | **      | <5              | **      | <5      | **      | 1                 |
| 91601                         | <5                                     | **      | 390             | 86.9    | 40               | 8.9     | <5              | **      | 13      | 2.9     | 449               |
| 91602                         | <5                                     | **      | 197             | 94.3    | 8                | 3.8     | <5              | **      | <5      | **      | 209               |
| 91604                         | <5                                     | **      | 294             | 94.2    | 7                | 2.2     | <5              | **      | 9       | 2.9     | 312               |
| 91605                         | <5                                     | **      | 816             | 84.8    | 117              | 12.2    | 15              | 1.6     | 11      | 1.1     | 962               |
| 91606                         | <5                                     | **      | 645             | 88.5    | 49               | 6.7     | 14              | 1.9     | 19      | 2.6     | 729               |
| 91607                         | <5                                     | **      | 280             | 91.8    | 16               | 5.2     | <5              | **      | 7       | 2.3     | 305               |
| 91608                         | <5                                     | **      | <5              | **      | <5               | **      | <5              | **      | <5      | **      | 1                 |
| 91702                         | <5                                     | **      | 893             | 83.7    | 120              | 11.2    | 33              | 3.1     | 17      | 1.6     | 1067              |
| 91706                         | <5                                     | **      | 1344            | 86.9    | 138              | 8.9     | 31              | 2.0     | 29      | 1.9     | 1546              |
| 91711                         | <5                                     | **      | 239             | 89.8    | 19               | 7.1     | <5              | **      | <5      | **      | 266               |
| 91722                         | <5                                     | **      | 474             | 87.5    | 52               | 9.6     | 9               | 1.7     | 6       | 1.1     | 542               |

Los Angeles County - Department of Public Health  
**Entry Into Prenatal Care (PNC) By Zip Code\***  
 Los Angeles County, 2007

| Mother's Residential Zip Code | Mother's Trimester Prenatal Care Began |         |                 |         |                  |         |                 |         |         |         | Total Live Births |
|-------------------------------|--|---------|-----------------|---------|------------------|---------|-----------------|---------|---------|---------|-------------------|
|                               | No Prenatal Care                       |         | First Trimester |         | Second Trimester |         | Third Trimester |         | Unknown |         |                   |
|                               | Number                                 | Percent | Number          | Percent | Number           | Percent | Number          | Percent | Number  | Percent |                   |
| 91723                         | <5                                     | **      | 214             | 84.9    | 26               | 10.3    | 6               | 2.4     | 6       | 2.4     | 252               |
| 91724                         | <5                                     | **      | 268             | 85.9    | 35               | 11.2    | <5              | **      | <5      | **      | 312               |
| 91731                         | <5                                     | **      | 476             | 85.9    | 55               | 9.9     | 6               | 1.1     | 16      | 2.9     | 554               |
| 91732                         | 7                                      | 0.5     | 1138            | 86.1    | 123              | 9.3     | 21              | 1.6     | 32      | 2.4     | 1321              |
| 91733                         | <5                                     | **      | 760             | 86.4    | 89               | 10.1    | 12              | 1.4     | 15      | 1.7     | 880               |
| 91740                         | <5                                     | **      | 253             | 87.2    | 31               | 10.7    | <5              | **      | <5      | **      | 290               |
| 91741                         | <5                                     | **      | 181             | 85.4    | 22               | 10.4    | 7               | 3.3     | <5      | **      | 212               |
| 91744                         | 6                                      | 0.3     | 1481            | 86.2    | 190              | 11.1    | 16              | 0.9     | 26      | 1.5     | 1719              |
| 91745                         | <5                                     | **      | 622             | 86.0    | 70               | 9.7     | 14              | 1.9     | 16      | 2.2     | 723               |
| 91746                         | <5                                     | **      | 436             | 84.3    | 63               | 12.2    | <5              | **      | 11      | 2.1     | 517               |
| 91748                         | <5                                     | **      | 677             | 87.0    | 60               | 7.7     | 24              | 3.1     | 16      | 2.1     | 778               |
| 91750                         | <5                                     | **      | 275             | 89.0    | 27               | 8.7     | <5              | **      | <5      | **      | 309               |
| 91754                         | <5                                     | **      | 377             | 87.5    | 34               | 7.9     | <5              | **      | 15      | 3.5     | 431               |
| 91755                         | <5                                     | **      | 264             | 86.3    | 28               | 9.2     | <5              | **      | 14      | 4.6     | 306               |
| 91765                         | <5                                     | **      | 460             | 90.4    | 34               | 6.7     | 8               | 1.6     | 7       | 1.4     | 509               |
| 91766                         | 12                                     | 0.8     | 1291            | 87.6    | 144              | 9.8     | 16              | 1.1     | 11      | 0.7     | 1474              |
| 91767                         | <5                                     | **      | 862             | 85.0    | 123              | 12.1    | 19              | 1.9     | 6       | 0.6     | 1014              |
| 91768                         | <5                                     | **      | 564             | 87.0    | 70               | 10.8    | 8               | 1.2     | <5      | **      | 648               |
| 91770                         | <5                                     | **      | 751             | 85.6    | 88               | 10.0    | 9               | 1.0     | 28      | 3.2     | 877               |
| 91773                         | <5                                     | **      | 278             | 90.3    | 24               | 7.8     | <5              | **      | <5      | **      | 308               |
| 91775                         | <5                                     | **      | 267             | 89.0    | 21               | 7.0     | <5              | **      | 9       | 3.0     | 300               |
| 91776                         | <5                                     | **      | 485             | 85.2    | 54               | 9.5     | 8               | 1.4     | 20      | 3.5     | 569               |
| 91780                         | <5                                     | **      | 315             | 87.5    | 29               | 8.1     | 6               | 1.7     | 9       | 2.5     | 360               |
| 91789                         | <5                                     | **      | 330             | 91.7    | 22               | 6.1     | 6               | 1.7     | <5      | **      | 360               |
| 91790                         | <5                                     | **      | 567             | 87.6    | 61               | 9.4     | 6               | 0.9     | 10      | 1.5     | 647               |
| 91791                         | <5                                     | **      | 343             | 88.2    | 36               | 9.3     | <5              | **      | <5      | **      | 389               |
| 91792                         | <5                                     | **      | 376             | 88.7    | 35               | 8.3     | <5              | **      | 7       | 1.7     | 424               |
| 91801                         | <5                                     | **      | 545             | 87.3    | 47               | 7.5     | 7               | 1.1     | 24      | 3.8     | 624               |
| 91803                         | <5                                     | **      | 317             | 85.2    | 35               | 9.4     | <5              | **      | 16      | 4.3     | 372               |
| 93510                         | <5                                     | **      | 68              | 84.0    | 9                | 11.1    | <5              | **      | <5      | **      | 81                |
| 93532                         | <5                                     | **      | 21              | 84.0    | <5               | **      | <5              | **      | <5      | **      | 25                |
| 93534                         | 9                                      | 1.0     | 592             | 68.3    | 224              | 25.8    | 37              | 4.3     | <5      | **      | 867               |
| 93535                         | 21                                     | 1.5     | 909             | 65.8    | 386              | 27.9    | 65              | 4.7     | <5      | **      | 1382              |
| 93536                         | 7                                      | 0.8     | 657             | 75.0    | 189              | 21.6    | 19              | 2.2     | <5      | **      | 876               |
| 93543                         | 6                                      | 2.9     | 133             | 63.6    | 64               | 30.6    | 6               | 2.9     | <5      | **      | 209               |
| 93544                         | <5                                     | **      | <5              | **      | <5               | **      | <5              | **      | <5      | **      | 7                 |
| 93550                         | 19                                     | 1.2     | 994             | 63.6    | 464              | 29.7    | 83              | 5.3     | <5      | **      | 1562              |
| 93551                         | <5                                     | **      | 498             | 80.8    | 101              | 16.4    | 12              | 1.9     | <5      | **      | 616               |
| 93552                         | 7                                      | 1.2     | 423             | 70.7    | 143              | 23.9    | 23              | 3.8     | <5      | **      | 598               |
| 93553                         | <5                                     | **      | 18              | 75.0    | 6                | 25.0    | <5              | **      | <5      | **      | 24                |
| 93591                         | <5                                     | **      | 70              | 58.8    | 42               | 35.3    | <5              | **      | <5      | **      | 119               |
| <b>Total</b>                  | 482                                    | 0.3     | 129741          | 85.5    | 16013            | 10.5    | 2957            | 1.9     | 2620    | 1.7     | 151813            |

Note: "Trimester Prenatal Care Began" excludes the prenatal care experiences of all women whose pregnancies did not result in a live birth.

\*\* Results not calculated if less than 5 cases

Source: California Department of Public Health, Center for Health Statistics, OHIR Vital Statistics Section, 2007.