

Low Birthweight

TITLE V INDICATOR TEMPLATE

INDICATOR: Percent of Low Birthweight

DEFINITION: The percent of live births weighing less than 2,500 grams

NUMERATOR: The number of live births weighing less than 2,500 grams, by place of residence, in a calendar year

DENOMINATOR: The total number of live births, by place of residence, in a calendar year

HEALTHY PEOPLE 2010 OBJECTIVE:
 Reduce low birthweight births to an incidence of no more than 5 percent of live births.
 (Baseline: 7.6 percent in 1998) (Objective 16-10a)

RISK FACTORS: Young or old maternal age; low income; low maternal education level; race/ethnicity (African American, Puerto Rican, Southeast Asian); high parity; short interpregnancy level; multiple gestation; unintended pregnancy; history of low birthweight; poor reproductive history; intrauterine growth retardation; preterm birth; prior preterm birth; late entry into prenatal care; lack of comprehensive prenatal care; low pregnancy weight; tobacco use during pregnancy; alcohol/substance abuse during pregnancy; low pregnancy weight gain; placenta previa; premature rupture of the membrane; stress during pregnancy; strenuous exertion during pregnancy

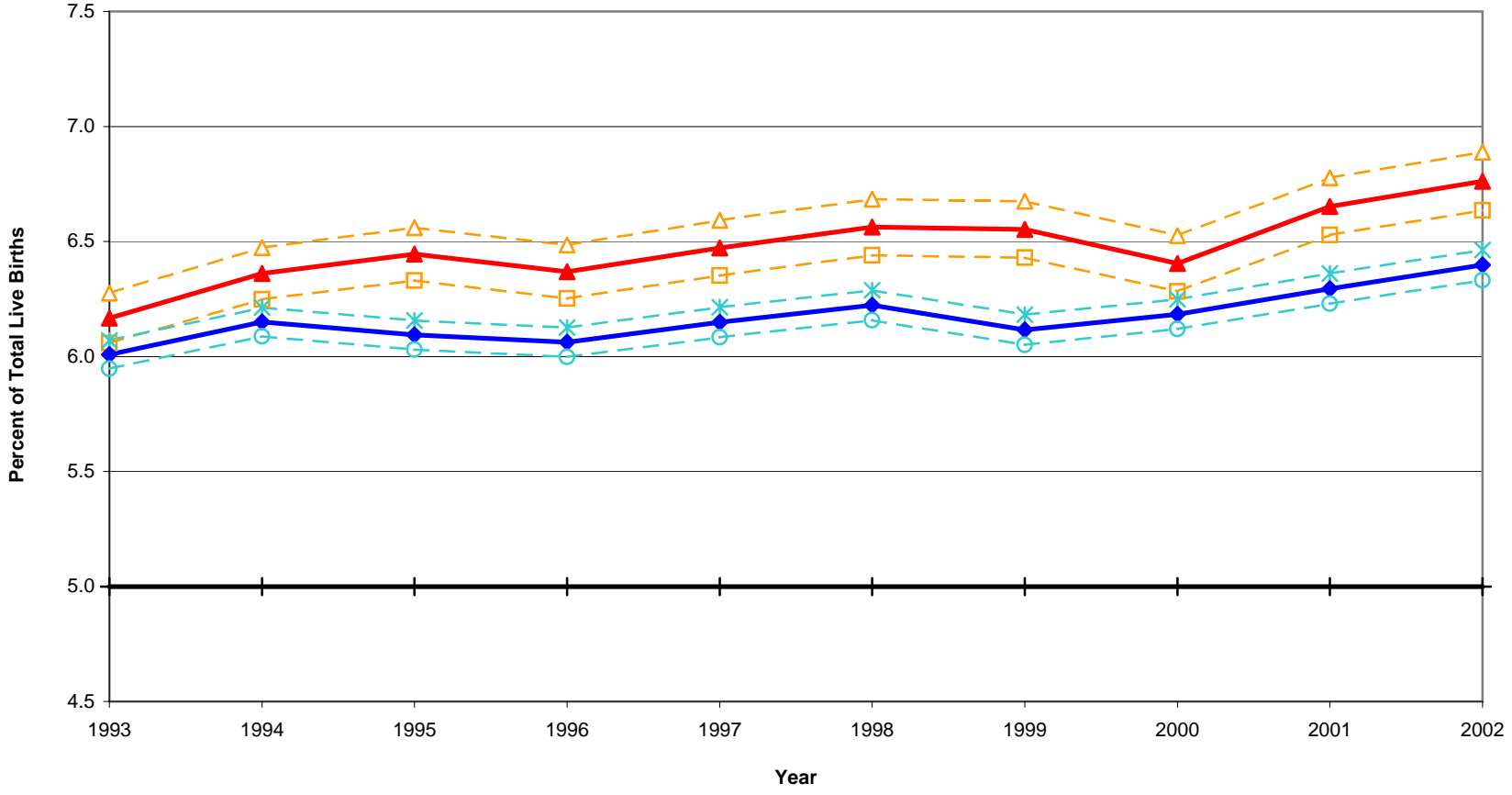
Year	California				LA County			
	Low Birthweight		95% Confidence Interval		Low Birthweight		95% Confidence Interval	
	Number	Percent	Lower	Upper	Number	Percent	Lower	Upper
1993	35,116	6.0	5.9	6.1	11,698	6.2	6.1	6.3
1994	34,876	6.2	6.1	6.2	11,474	6.4	6.2	6.5
1995	33,588	6.1	6.0	6.2	11,270	6.4	6.3	6.6
1996	32,649	6.1	6.0	6.1	10,761	6.4	6.3	6.5
1997	32,232	6.1	6.1	6.2	10,487	6.5	6.4	6.6
1998	32,438	6.2	6.2	6.3	10,408	6.6	6.4	6.7
1999	31,686	6.1	6.1	6.2	10,232	6.6	6.4	6.7
2000	32,853	6.2	6.1	6.2	10,080	6.4	6.3	6.5
2001	33,196	6.3	6.2	6.4	10,213	6.7	6.5	6.8
2002	33,859	6.4	6.3	6.5	10,222	6.8	6.6	6.9

Year	Denominator: Live Births	
	California	LA County
1993	584,483	189,706
1994	567,034	180,394
1995	551,226	174,862
1996	538,628	168,973
1997	524,174	162,036
1998	521,265	158,604
1999	518,073	156,153
2000	531,285	157,391
2001	527,371	153,523
2002	529,245	151,167

Source: California Department of Health Services, Center for Health Statistics, Vital Statistics, 1993-2002.

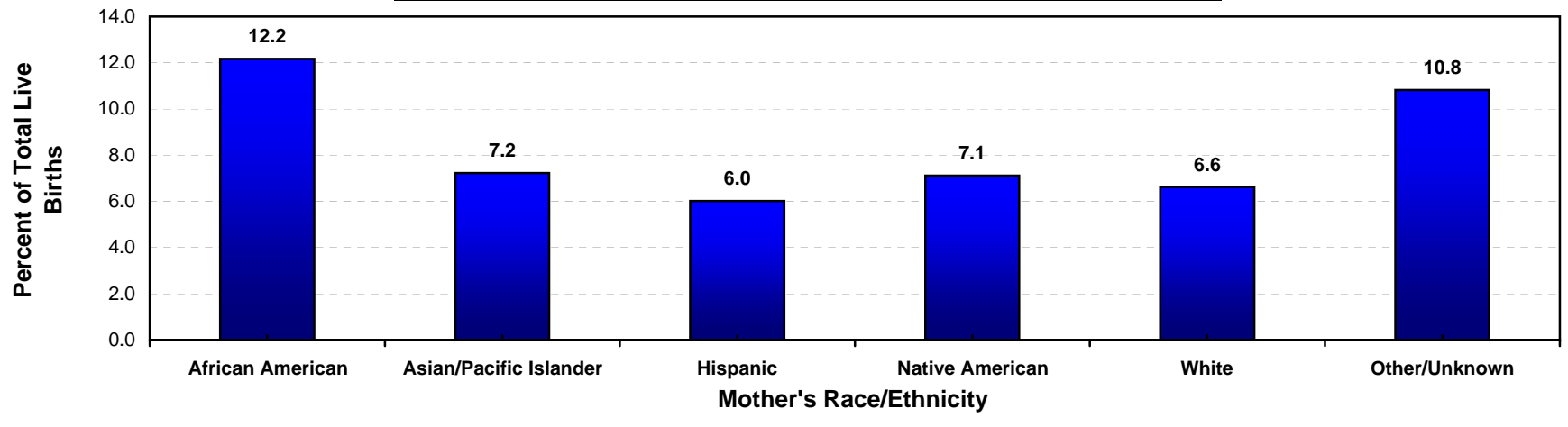
Percent of Low Birthweight California vs. Los Angeles County, 1993-2002

-△- County Upper 95% CL
 -▲- County Point Estimate
 -□- County Lower 95% CL
-✱- State Upper 95% CL
 -◆- State Point Estimate
 -○- State Lower 95% CL
-+- Healthy People 2010



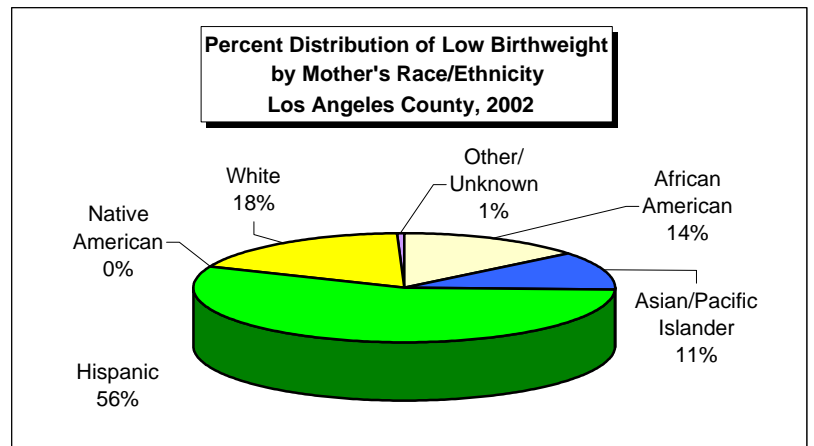
Year 2010 Objective: Reduce low birthweight births to an incidence of no more than 5 percent of live births.
 Source: California Department of Health Services, Center for Health Statistics, Vital Statistics, 1993-2002.

**Low Birthweight Live Births, as Percent of Total Live Births
by Mother's Race/Ethnicity
Los Angeles County, 2002**



Los Angeles County, 2002				
Mother's Race/Ethnicity	Low Birthweight		95% Confidence Interval	
	Number	Percent	Lower	Upper
African American	1,456	12.2	11.6	12.7
Asian/Pacific Islander	1,151	7.2	6.8	7.6
Hispanic	5,700	6.0	5.9	6.2
Native American	18	7.1	3.9	10.3
White	1,832	6.6	6.3	6.9
Other/Unknown	65	10.8	8.3	13.3
Total	10,222	6.8	6.6	6.9

Total Live Births
11,973
15,924
94,742
253
27,674
601
151,167



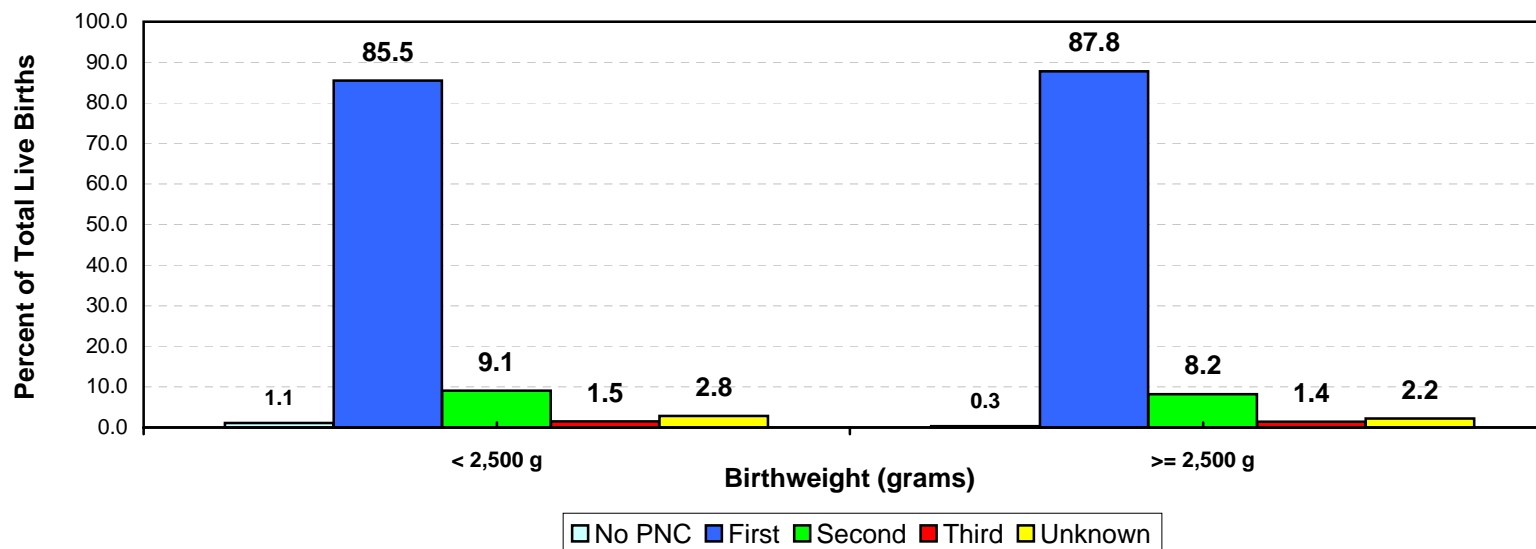
Year 2010 Objective: Reduce low birthweight births to an incidence of no more than 5 percent of live births.

Note: Low birthweight is defined as weight less than 2,500 grams at birth.

African American, Asian/Pacific Islander, Native American, White and other races exclude Hispanic ethnicity. Hispanic includes any race category.

Source: California Department of Health Services, Center for Health Statistics, Vital Statistics, 2002.

**Percent of Live Births by Mother's Trimester Prenatal Care (PNC) Began
by Birthweight
Los Angeles County, 2002**



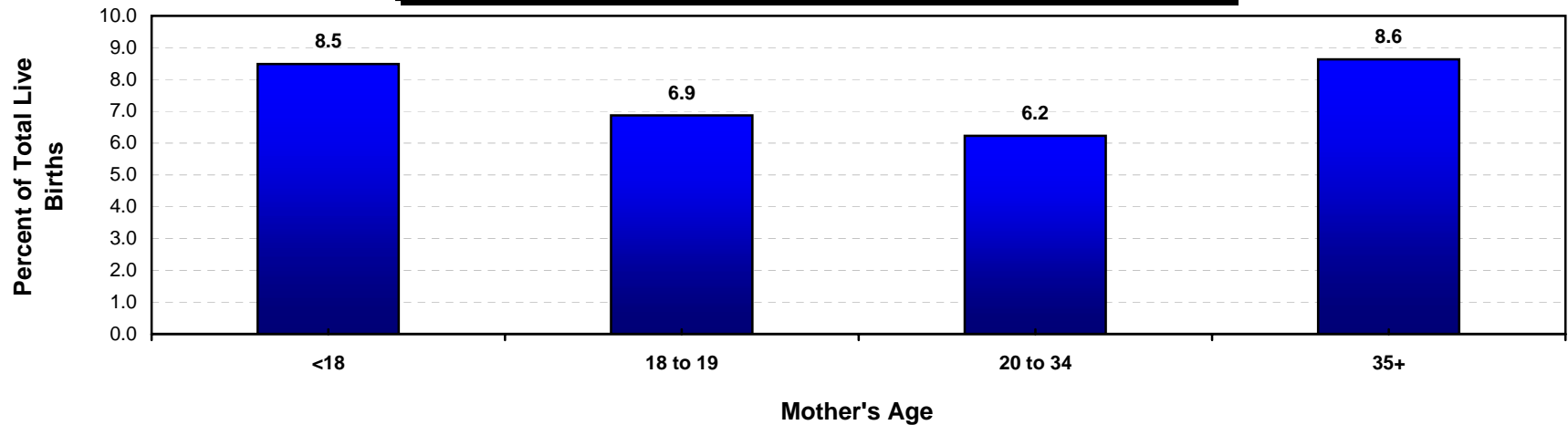
Los Angeles County, 2002				
Trimester Prenatal Care Began	Birthweight (grams)			
	< 2,500 g		≥ 2,500 g	
	Number	Percent	Number	Percent
No Prenatal Care	112	1.1	405	0.3
First	8,739	85.5	123,754	87.8
Second	928	9.1	11,589	8.2
Third	154	1.5	2,035	1.4
Unknown	289	2.8	3,158	2.2
Total	10,222	100.0	140,941	100.0

Note: Live births with unknown birthweight were excluded from this analysis.

"Trimester Prenatal Care (PNC) Began" excludes the prenatal care experiences of all women whose pregnancies did not result in a live birth.

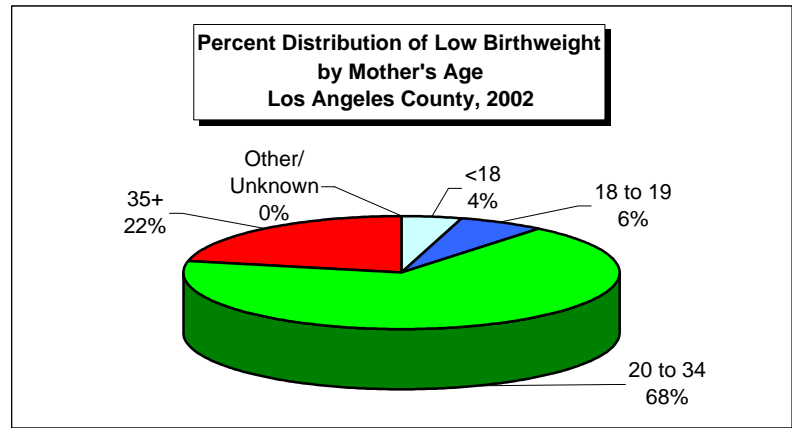
Source: California Department of Health Services, Center for Health Statistics, Vital Statistics, 2002.

**Low Birthweight Live Births, as Percent of Total Live Births
by Mother's Age
Los Angeles County, 2002**



Los Angeles County, 2002				
Mother's Age	Low Birthweight		95% Confidence Interval	
	Number	Percent	Lower	Upper
<18	452	8.5	7.7	9.2
18 to 19	648	6.9	6.4	7.4
20 to 34	6,894	6.2	6.1	6.4
35+	2,224	8.6	8.3	9.0
Other/Unknown	4	N/C	N/C	N/C
Total	10,222	6.8	6.6	6.9

Total Live Births
5,329
9,429
110,641
25,749
19
151,167



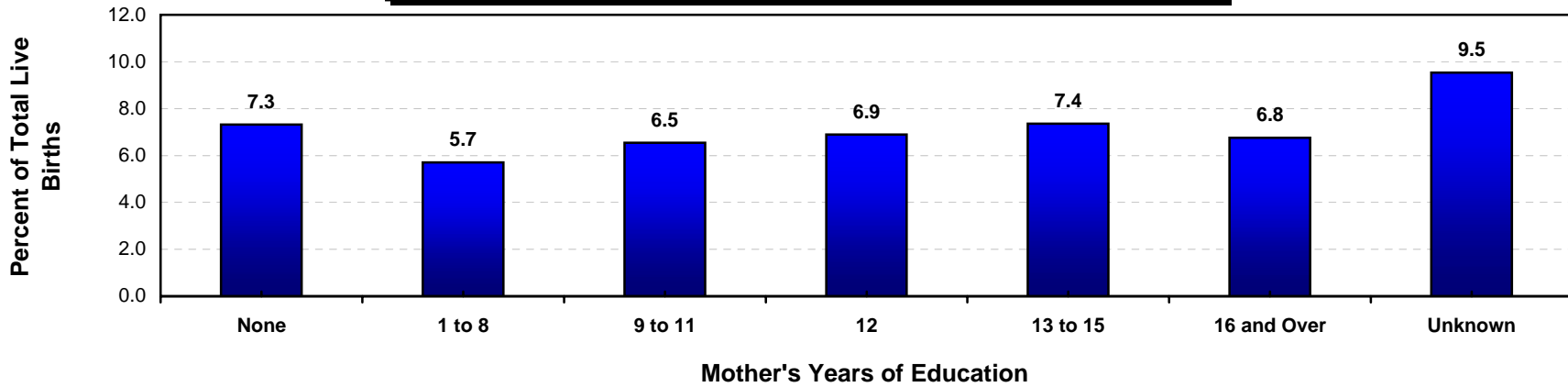
Year 2010 Objective: Reduce low birthweight births to an incidence of no more than 5 percent of live births.

Note: Low birthweight is defined as weight less than 2,500 grams at birth.

Rates are not calculated (N/C) if number is fewer than five.

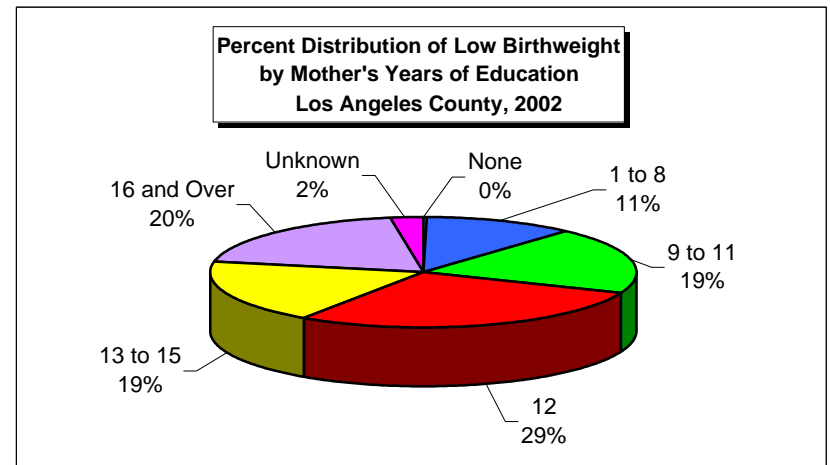
Source: California Department of Health Services, Center for Health Statistics, Vital Statistics, 2002.

**Low Birthweight Live Births, as Percent of Total Live Births
by Mother's Years of Education
Los Angeles County, 2002**



Los Angeles County, 2002				
Mother's Years of Education	Low Birthweight		95% Confidence Interval	
	Number	Percent	Lower	Upper
None	32	7.3	4.9	9.8
1 to 8	1,152	5.7	5.4	6.0
9 to 11	1,984	6.5	6.3	6.8
12	2,914	6.9	6.7	7.1
13 to 15	1,893	7.4	7.0	7.7
16 and Over	2,002	6.8	6.5	7.0
Unknown	245	9.5	8.4	10.7
Total	10,222	6.8	6.6	6.9

Total Live Births
437
20,204
30,329
42,252
25,737
29,637
2,571
151,167



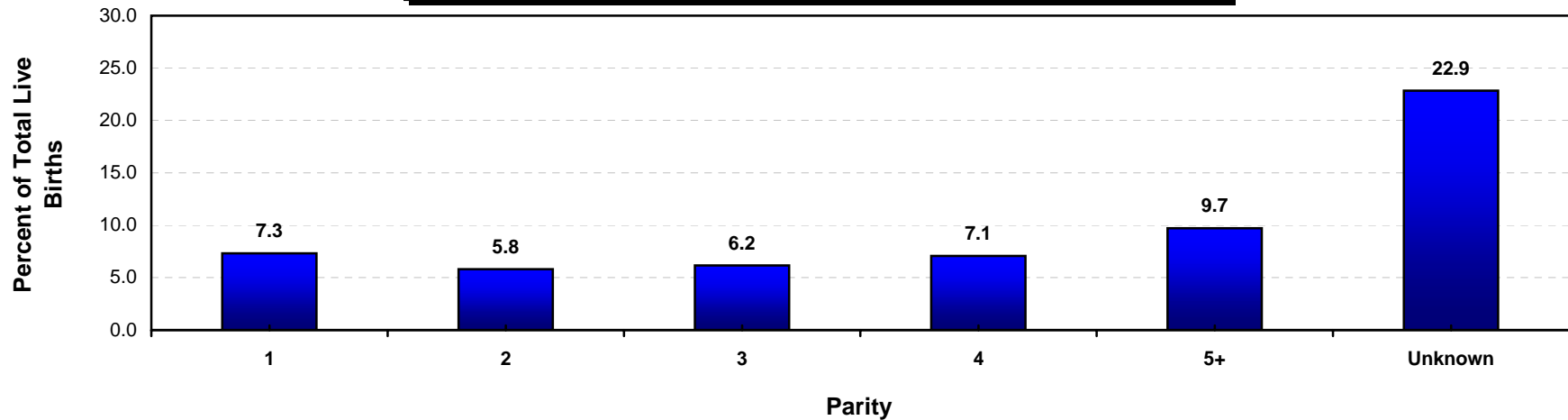
Year 2010 Objective: Reduce low birthweight births to an incidence of no more than 5 percent of live births.

Note: Low birthweight is defined as weight less than 2,500 grams at birth.

This analysis did not adjust for teen mothers who may not be old enough to have reached higher categorical educational level.

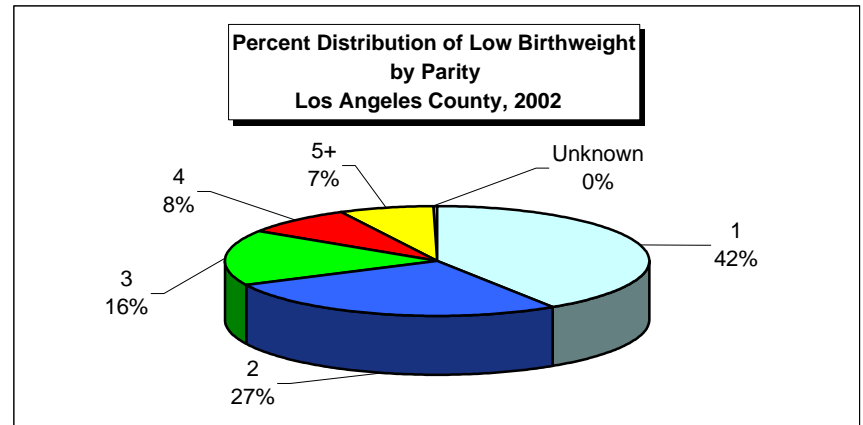
Source: California Department of Health Services, Center for Health Statistics, Vital Statistics, 2002.

**Low Birthweight Live Births, as Percent of Total Live Births
by Parity
Los Angeles County, 2002**



Los Angeles County, 2002				
Parity	Low Birthweight		95% Confidence Interval	
	Number	Percent	Lower	Upper
1	4,179	7.3	7.1	7.5
2	2,760	5.8	5.6	6.0
3	1,668	6.2	5.9	6.4
4	838	7.1	6.6	7.5
5+	745	9.7	9.0	10.4
Unknown	32	22.9	15.9	29.8
Total	10,222	6.8	6.6	6.9

Total Live Births
57,002
47,427
27,069
11,853
7,676
140
151,167



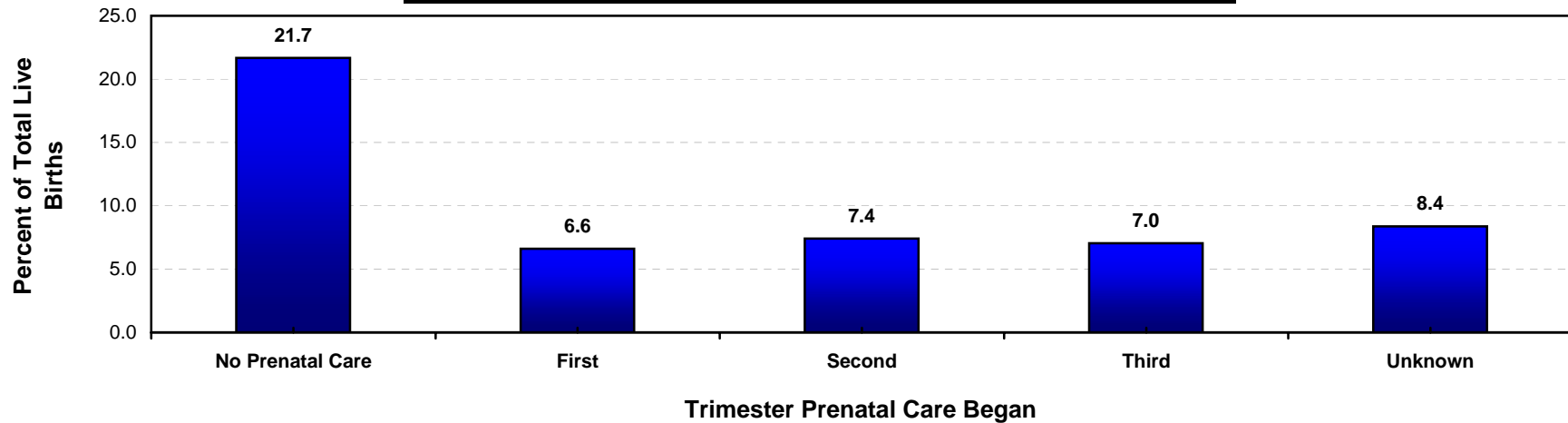
Year 2010 Objective: Reduce low birthweight births to an incidence of no more than 5 percent of live births.

Note: Low birthweight is defined as weight less than 2,500 grams at birth.

Parity = number of pregnancies resulting in live births to a woman. Number of total live births is used as a proxy for parity.

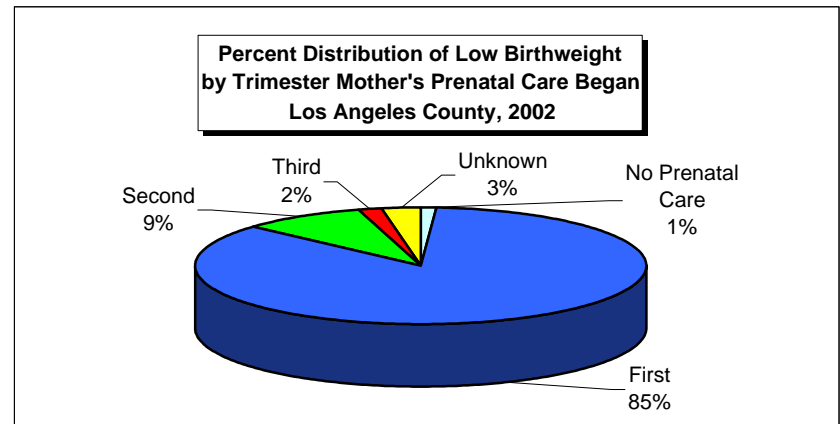
Source: California Department of Health Services, Center for Health Statistics, Vital Statistics, 2002.

**Low Birthweight Live Births, as Percent of Total Live Births
by Mother's Trimester Prenatal Care (PNC) Began
Los Angeles County, 2002**



Los Angeles County, 2002				
Trimester Prenatal Care Began	Low Birthweight		95% Confidence Interval	
	Number	Percent	Lower	Upper
No Prenatal Care	112	21.7	18.1	25.2
First	8,739	6.6	6.5	6.7
Second	928	7.4	7.0	7.9
Third	154	7.0	6.0	8.1
Unknown	289	8.4	7.5	9.3
Total	10,222	6.8	6.6	6.9

Total Live Births
517
132,493
12,517
2,189
3,451
151,167



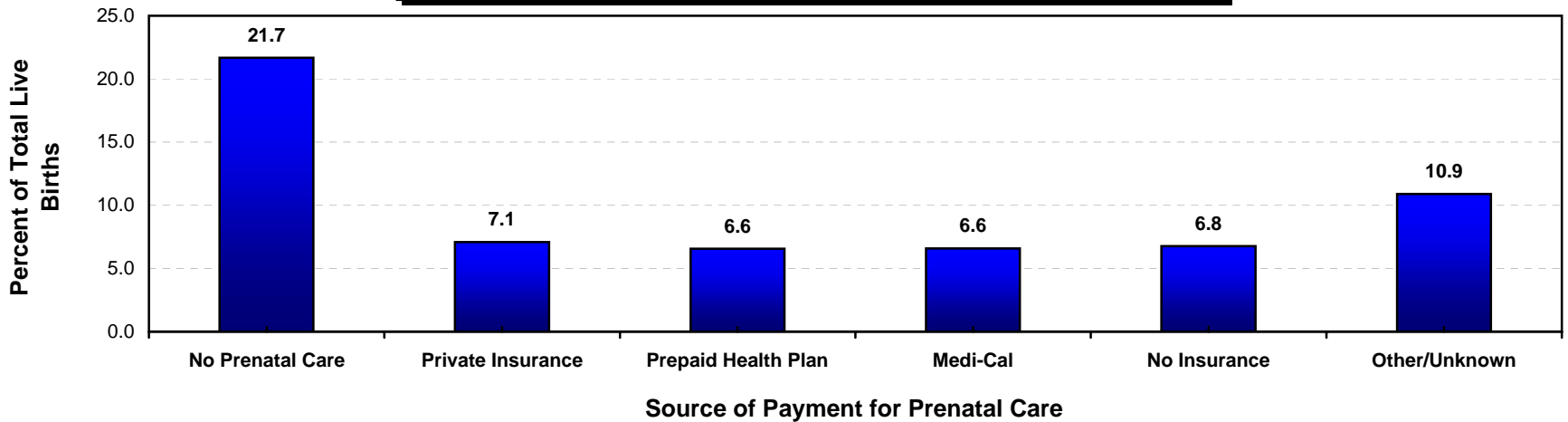
Year 2010 Objective: Reduce low birthweight births to an incidence of no more than 5 percent of live births.

Note: Low birthweight is defined as weight less than 2,500 grams at birth.

"Trimester Prenatal Care (PNC) Began" excludes the prenatal care experiences of all women whose pregnancies did not result in a live birth.

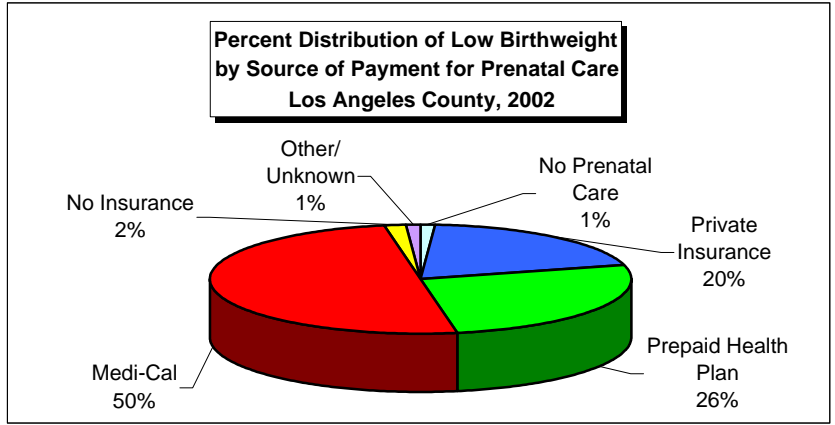
Source: California Department of Health Services, Center for Health Statistics, Vital Statistics, 2002.

**Low Birthweight Live Births, as Percent of Total Live Births
by Source of Payment for Prenatal Care (PNC)
Los Angeles County, 2002**



Los Angeles County, 2002				
Source of Payment for Prenatal Care	Low Birthweight		95% Confidence Interval	
	Number	Percent	Lower	Upper
No Prenatal Care	112	21.7	18.1	25.2
Private Insurance	2,025	7.1	6.8	7.4
Prepaid Health Plan	2,689	6.6	6.3	6.8
Medi-Cal	5,107	6.6	6.4	6.8
No Insurance	171	6.8	5.8	7.8
Other/Unknown	118	10.9	9.0	12.8
Total	10,222	6.8	6.6	6.9

Total Live Births
517
28,550
40,976
77,518
2,524
1,082
151,167



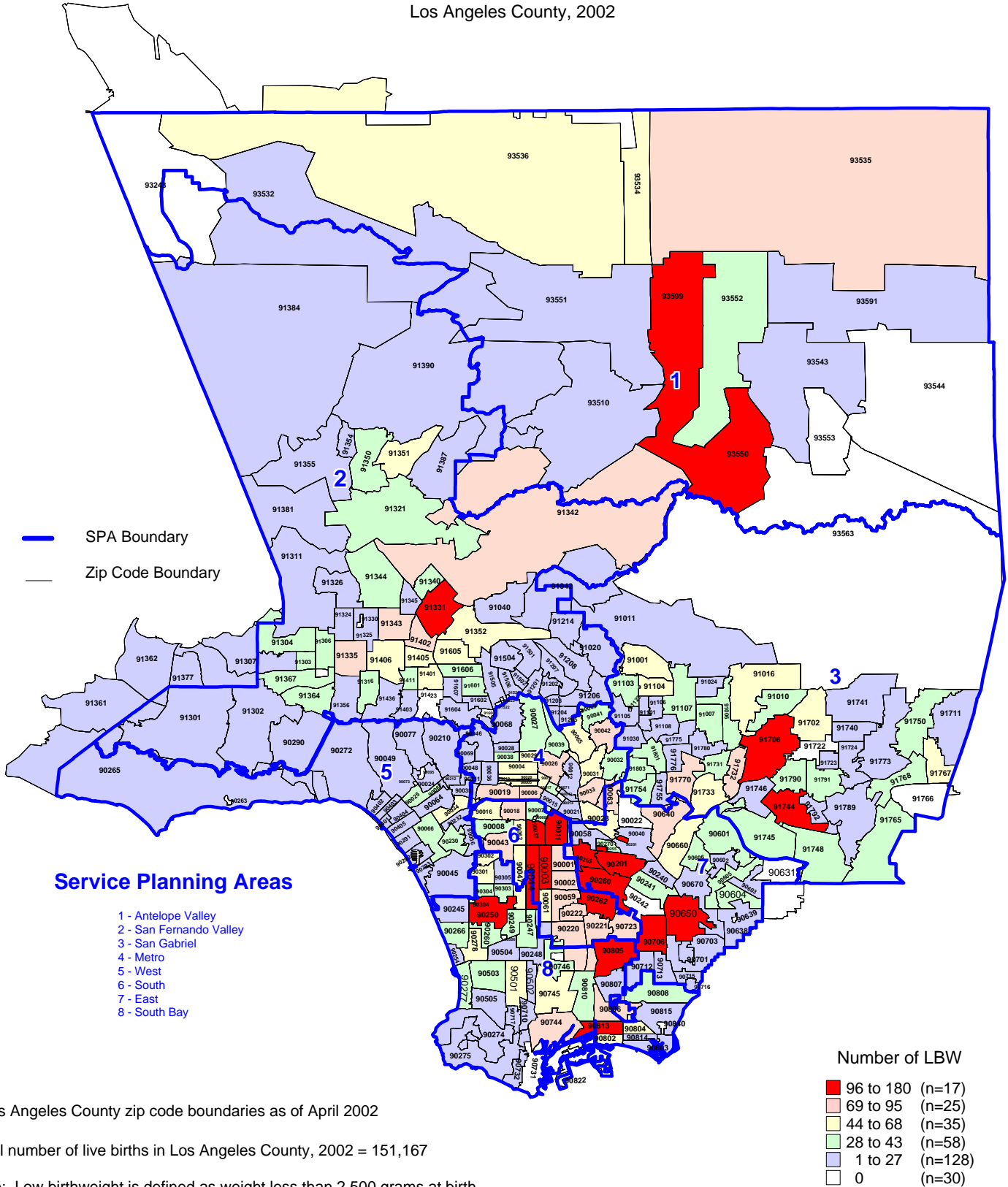
Year 2010 Objective: Reduce low birthweight births to an incidence of no more than 5 percent of live births.

Note: Low birthweight is defined as weight less than 2,500 grams at birth.

Source: California Department of Health Services, Center for Health Statistics, Vital Statistics, 2002.

Number of Low Birthweight (LBW) Live Births by Zip Code* and Service Planning Area (SPA)

Los Angeles County, 2002



* Los Angeles County zip code boundaries as of April 2002

Total number of live births in Los Angeles County, 2002 = 151,167

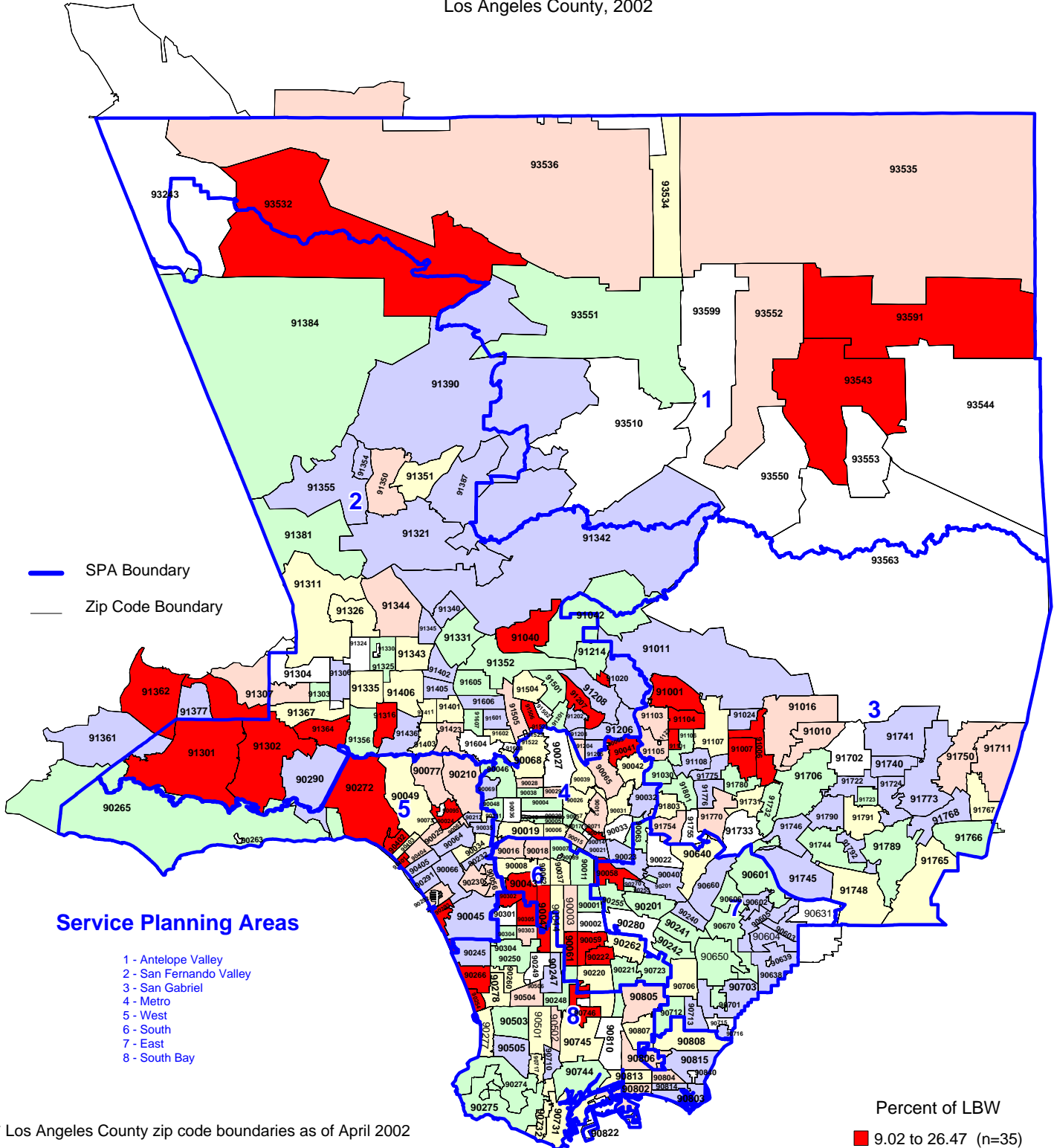
Note: Low birthweight is defined as weight less than 2,500 grams at birth

Source: California Department of Health Services,
Center for Health Statistics, Vital Statistics, 2002

n = total number of zip codes in range

Percent of Low Birthweight (LBW) Live Births by Zip Code* and Service Planning Area (SPA)

Los Angeles County, 2002



* Los Angeles County zip code boundaries as of April 2002

Total number of live births in Los Angeles County, 2002 = 151,167

Note: Percent of low birthweight is defined as weight less than 2,500 grams at birth per 100 live births

Source: California Department of Health Services, Center for Health Statistics, Vital Statistics, 2002



n = total number of zip codes in range

TITLE V INDICATOR TEMPLATE

INDICATOR: Percent of Very Low Birthweight

DEFINITION: The percent of live births weighing less than 1,500 grams

NUMERATOR: The number of live births weighing less than 1,500 grams, by place of residence, in a calendar year

DENOMINATOR: The total number of live births, by place of residence, in a calendar year

HEALTHY PEOPLE 2010 OBJECTIVE:

Reduce very low birthweight births to an incidence of no more than 0.9 percent of live births.
(Baseline: 1.4 percent in 1998) (Objective 16-10b)

RISK FACTORS: Preterm birth, prior preterm birth; race/ethnicity (African American, Puerto Rican); substance use/abuse (e.g. illicit drug use)

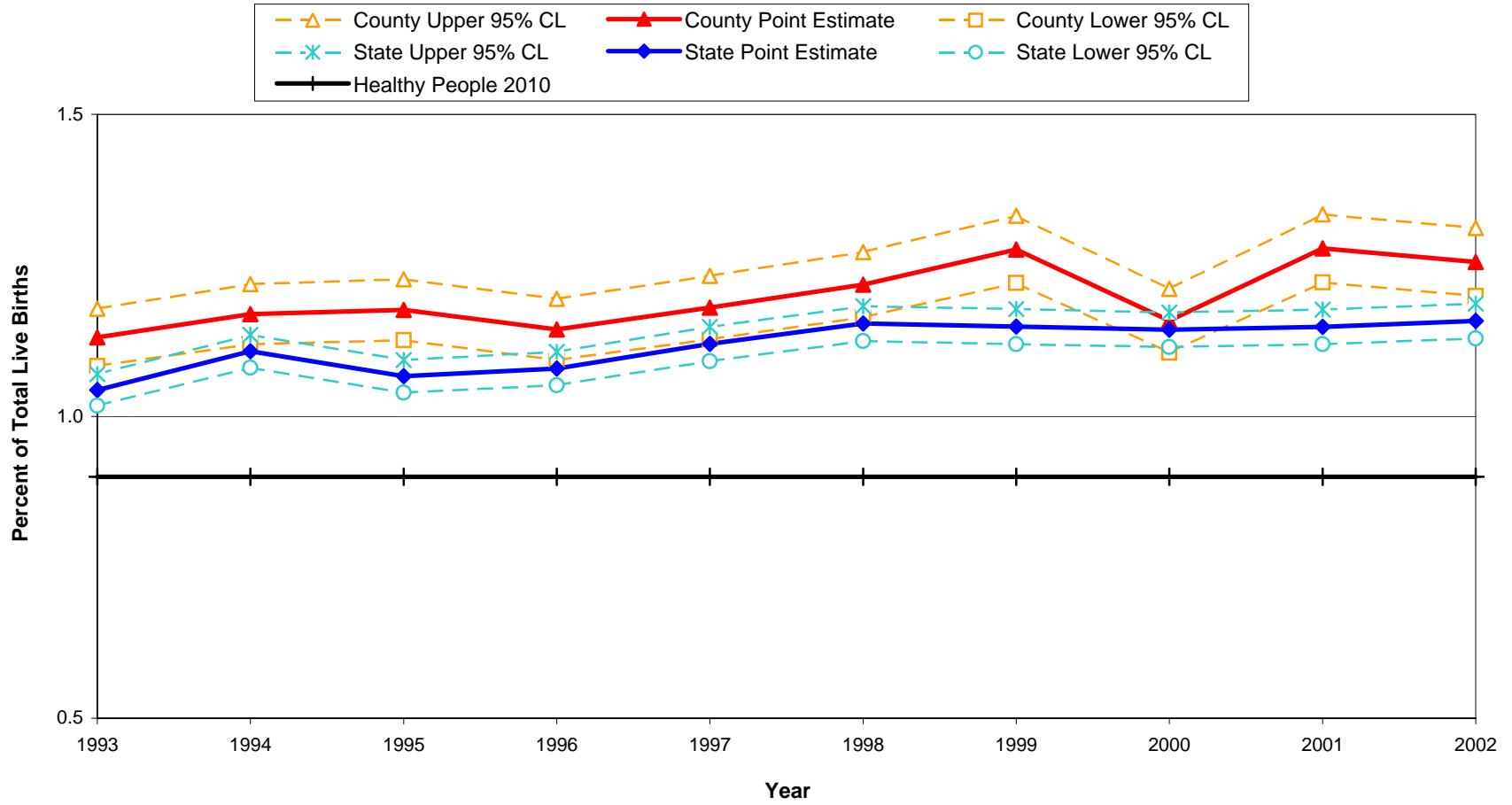
See also risk factors for low birthweight

Year	California				LA County			
	Very Low Birthweight		95% Confidence Interval		Very Low Birthweight		95% Confidence Interval	
	Number	Percent	Lower	Upper	Number	Percent	Lower	Upper
1993	6,099	1.0	1.0	1.1	2,145	1.1	1.1	1.2
1994	6,282	1.1	1.1	1.1	2,109	1.2	1.1	1.2
1995	5,877	1.1	1.0	1.1	2,057	1.2	1.1	1.2
1996	5,812	1.1	1.1	1.1	1,933	1.1	1.1	1.2
1997	5,869	1.1	1.1	1.1	1,912	1.2	1.1	1.2
1998	6,013	1.2	1.1	1.2	1,932	1.2	1.2	1.3
1999	5,950	1.1	1.1	1.2	1,993	1.3	1.2	1.3
2000	6,075	1.1	1.1	1.2	1,823	1.2	1.1	1.2
2001	6,054	1.1	1.1	1.2	1,962	1.3	1.2	1.3
2002	6,127	1.2	1.1	1.2	1,898	1.3	1.2	1.3

Denominator: Live Births		
Year	California	LA County
1993	584,483	189,706
1994	567,034	180,394
1995	551,226	174,862
1996	538,628	168,973
1997	524,174	162,036
1998	521,265	158,604
1999	518,073	156,153
2000	531,285	157,391
2001	527,371	153,523
2002	529,245	151,167

Source: California Department of Health Services, Center for Health Statistics, Vital Statistics, 1993-2002.

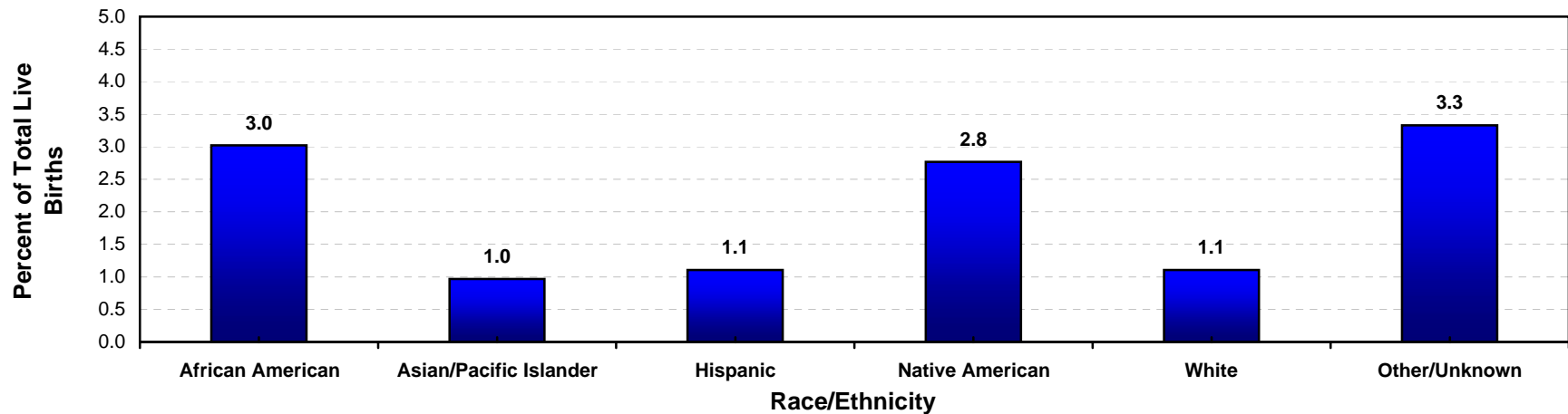
Percent of Very Low Birthweight California vs. Los Angeles County, 1993-2002



Year 2010 Objective: Reduce very low birthweight births to an incidence of no more than 0.9 percent of live births.

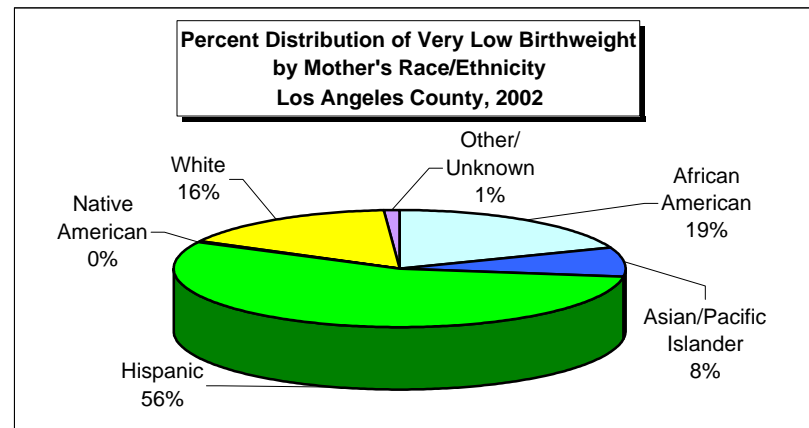
Source: California Department of Health Services, Center for Health Statistics, Vital Statistics, 1993-2002.

**Very Low Birthweight Live Births, as Percent of Total Live Births
by Mother's Race/Ethnicity
Los Angeles County, 2002**



Los Angeles County, 2002				
Mother's Race/Ethnicity	Very Low Birthweight		95% Confidence Interval	
	Number	Percent	Lower	Upper
African American	362	3.0	2.7	3.3
Asian/Pacific Islander	154	1.0	0.8	1.1
Hispanic	1,049	1.1	1.0	1.2
Native American	7	2.8	0.7	4.8
White	306	1.1	1.0	1.2
Other/Unknown	20	3.3	1.9	4.8
Total	1,898	1.3	1.2	1.3

Total Live Births
11,973
15,924
94,742
253
27,674
601
151,167



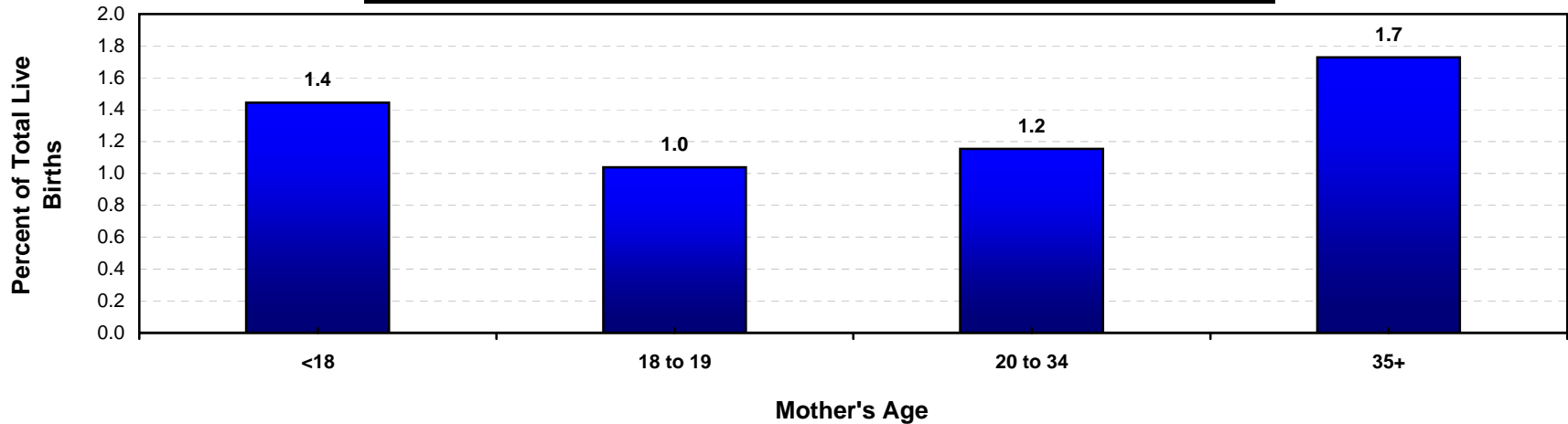
Year 2010 Objective: Reduce very low birthweight births to an incidence of no more than 0.9 percent of live births.

Note: Very low birthweight is defined as weight less than 1,500 grams at birth.

African American, Asian/Pacific Islander, Native American, White and other races exclude Hispanic ethnicity. Hispanic includes any race category.

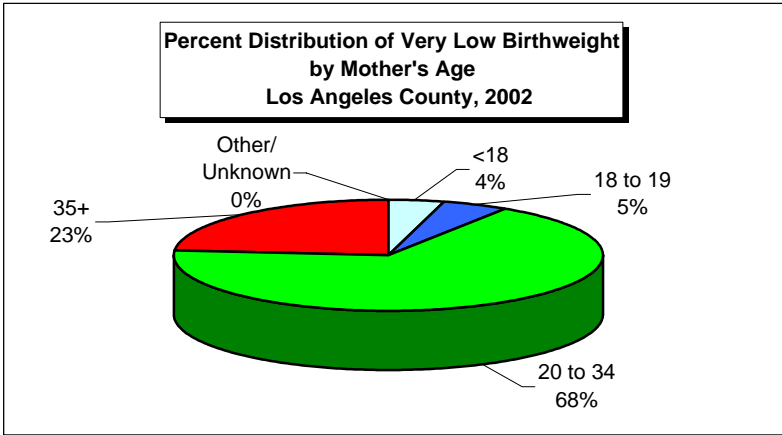
Source: California Department of Health Services, Center for Health Statistics, Vital Statistics, 2002.

**Very Low Birthweight Live Births, as Percent of Total Live Births
by Mother's Age
Los Angeles County, 2002**



Los Angeles County, 2002				
Mother's Age	Very Low Birthweight		95% Confidence Interval	
	Number	Percent	Lower	Upper
<18	77	1.4	1.1	1.8
18 to 19	98	1.0	0.8	1.2
20 to 34	1,277	1.2	1.1	1.2
35+	445	1.7	1.6	1.9
Other/Unknown	1	N/C	N/C	N/C
Total	1,898	1.3	1.2	1.3

Total Live Births
5,329
9,429
110,641
25,749
19
151,167



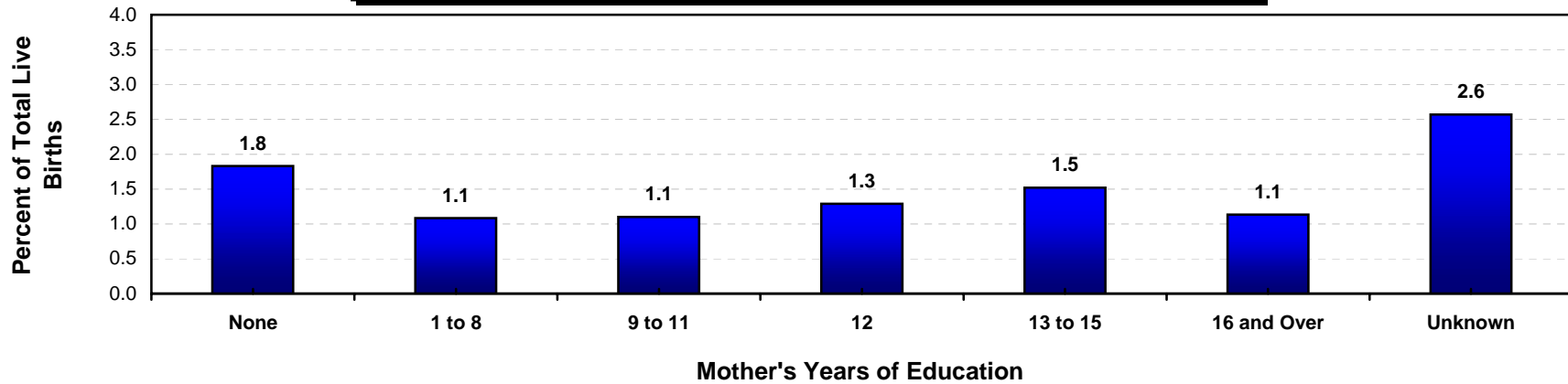
Year 2010 Objective: Reduce very low birthweight births to an incidence of no more than 0.9 percent of live births.

Note: Very low birthweight is defined as weight less than 1,500 grams at birth.

Rates are not calculated (N/C) if number is fewer than five.

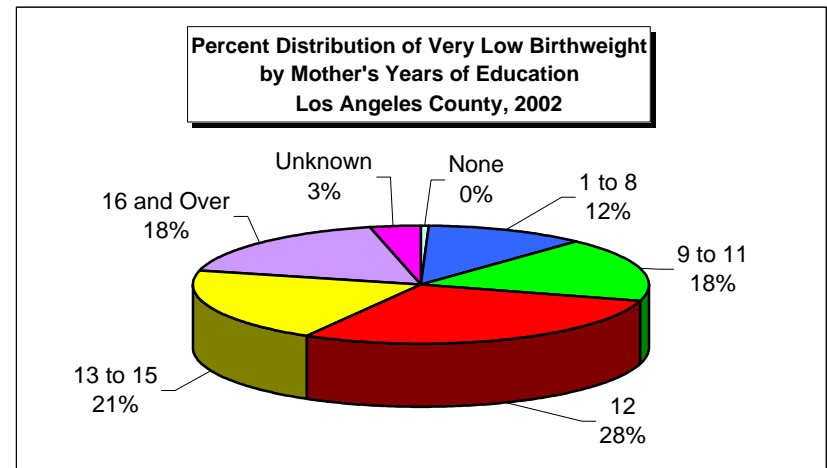
Source: California Department of Health Services, Center for Health Statistics, Vital Statistics, 2002.

**Very Low Birthweight Live Births, as Percent of Total Live Births
by Mother's Years of Education
Los Angeles County, 2002**



Los Angeles County, 2002				
Mother's Years of Education	Very Low Birthweight		95% Confidence Interval	
	Number	Percent	Lower	Upper
None	8	1.8	0.6	3.1
1 to 8	219	1.1	0.9	1.2
9 to 11	333	1.1	1.0	1.2
12	545	1.3	1.2	1.4
13 to 15	391	1.5	1.4	1.7
16 and Over	336	1.1	1.0	1.3
Unknown	66	2.6	2.0	3.2
Total	1,898	1.3	1.2	1.3

Total Live Births
437
20,204
30,329
42,252
25,737
29,637
2,571
151,167



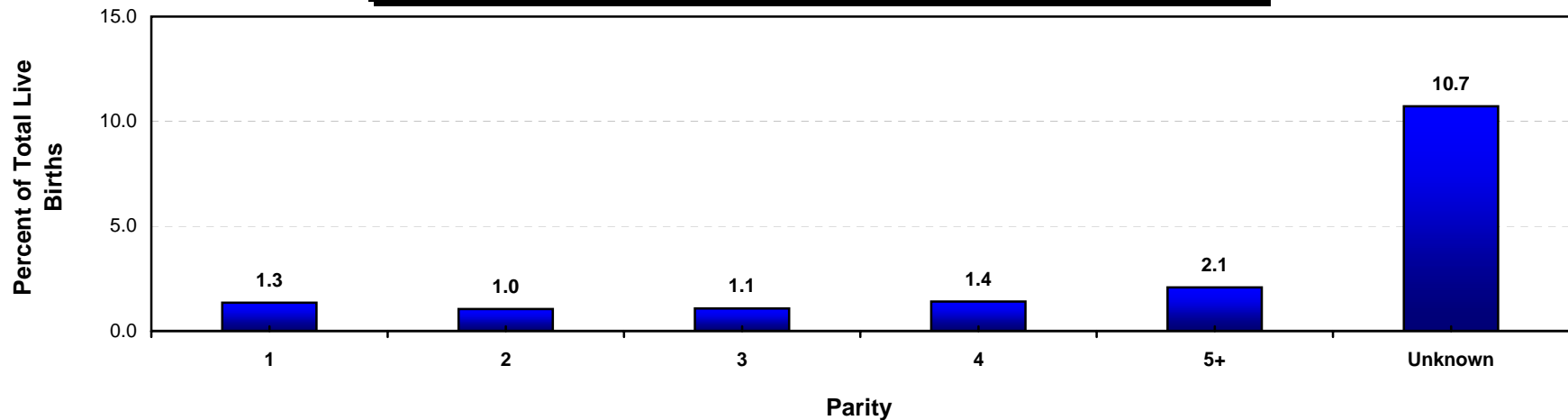
Year 2010 Objective: Reduce very low birthweight births to an incidence of no more than 0.9 percent of live births.

Note: Very low birthweight is defined as weight less than 1,500 grams at birth.

This analysis did not adjust for teen mothers who may not be old enough to have reached higher categorical education level.

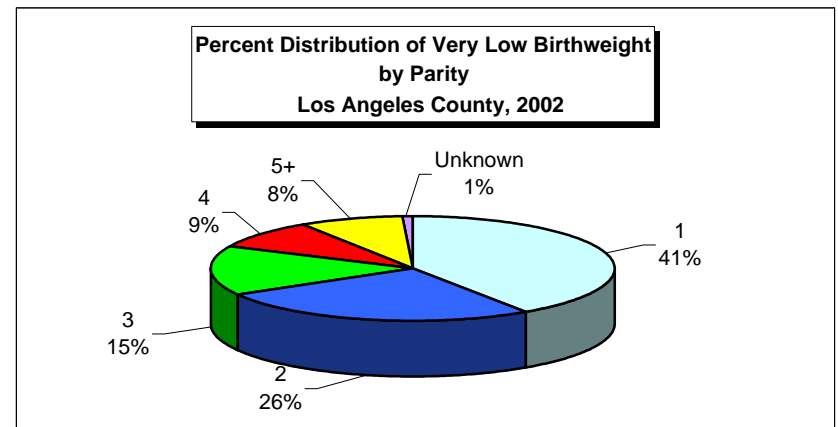
Source: California Department of Health Services, Center for Health Statistics, Vital Statistics, 2002.

**Very Low Birthweight Live Births, as Percent of Total Live Births
by Parity
Los Angeles County, 2002**



Los Angeles County, 2002				
Parity	Very Low Birthweight		95% Confidence Interval	
	Number	Percent	Lower	Upper
1	769	1.3	1.3	1.4
2	495	1.0	1.0	1.1
3	292	1.1	1.0	1.2
4	167	1.4	1.2	1.6
5+	160	2.1	1.8	2.4
Unknown	15	10.7	5.6	15.8
Total	1,898	1.3	1.2	1.3

Total Live Births
57,002
47,427
27,069
11,853
7,676
140
151,167



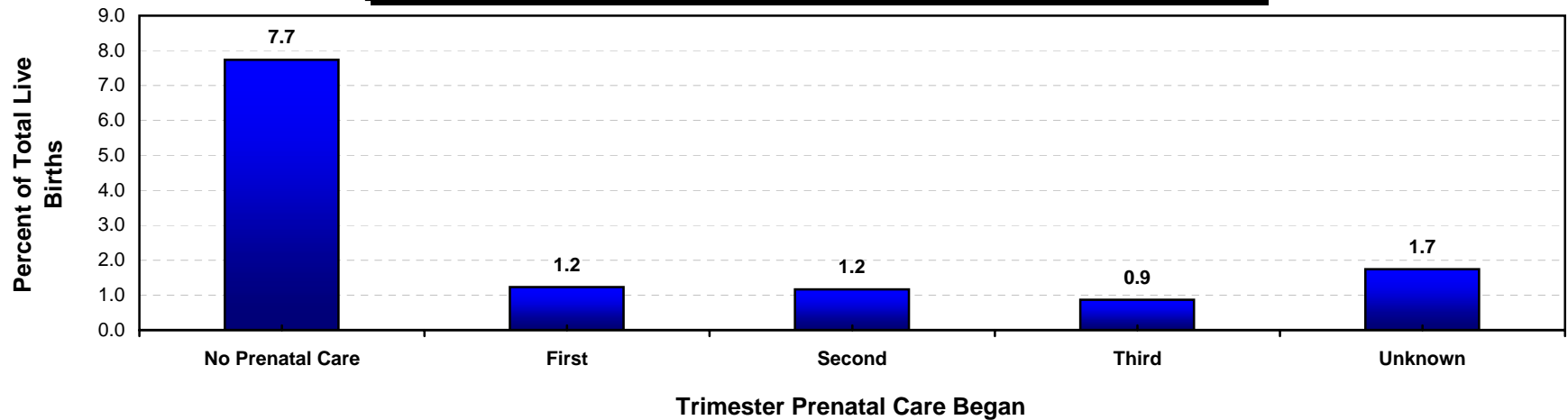
Year 2010 Objective: Reduce very low birthweight births to an incidence of no more than 0.9 percent of live births.

Note: Very low birthweight is defined as weight less than 1,500 grams at birth.

Parity = number of pregnancies resulting in live births to a woman. Number of total live births is used as a proxy for parity.

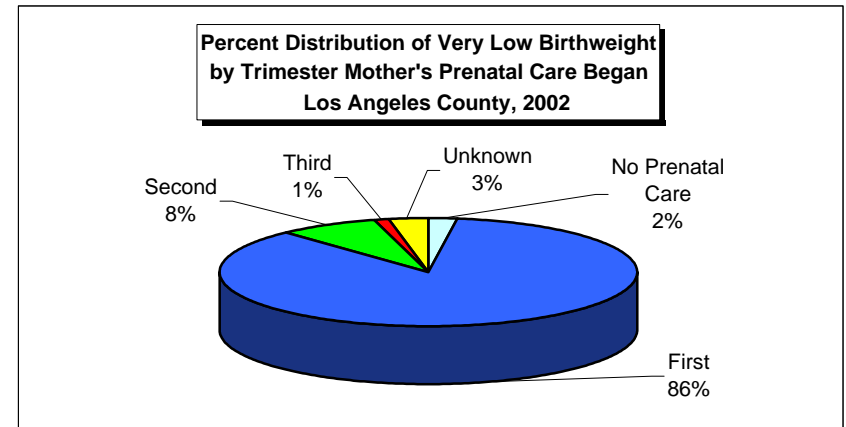
Source: California Department of Health Services, Center for Health Statistics, Vital Statistics, 2002.

**Very Low Birthweight Live Births, as Percent of Total Live Births
by Mother's Trimester Prenatal Care (PNC) Began
Los Angeles County, 2002**



Los Angeles County, 2002				
Trimester Prenatal Care Began	Very Low Birthweight		95% Confidence Interval	
	Number	Percent	Lower	Upper
No Prenatal Care	40	7.7	5.4	10.0
First	1,633	1.2	1.2	1.3
Second	146	1.2	1.0	1.4
Third	19	0.9	0.5	1.3
Unknown	60	1.7	1.3	2.2
Total	1,898	1.3	1.2	1.3

Total Live Births
517
132,493
12,517
2,189
3,451
151,167



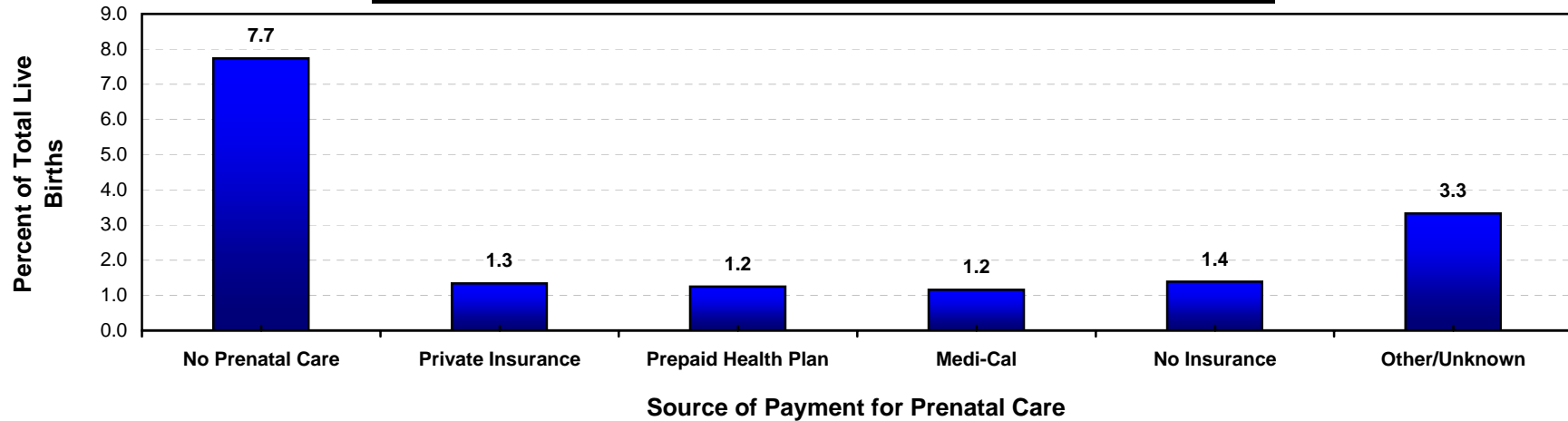
Year 2010 Objective: Reduce very low birthweight births to an incidence of no more than 0.9 percent of live births.

Note: Very low birthweight is defined as weight less than 1,500 grams at birth.

"Trimester Prenatal Care (PNC) Began" excludes the prenatal care experiences of all women whose pregnancies did not result in a live birth.

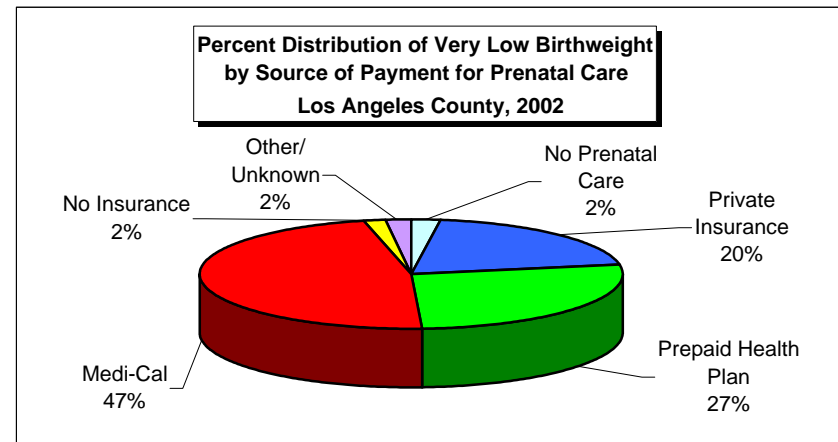
Source: California Department of Health Services, Center for Health Statistics, Vital Statistics, 2002.

**Very Low Birthweight Live Births, as Percent of Total Live Births
by Source of Payment for Prenatal Care (PNC)
Los Angeles County, 2002**



Los Angeles County, 2002				
Source of Payment for Prenatal Care	Very Low Birthweight		95% Confidence Interval	
	Number	Percent	Lower	Upper
No Prenatal Care	40	7.7	5.4	10.0
Private Insurance	382	1.3	1.2	1.5
Prepaid Health Plan	510	1.2	1.1	1.4
Medi-Cal	895	1.2	1.1	1.2
No Insurance	35	1.4	0.9	1.8
Other/Unknown	36	3.3	2.3	4.4
Total	1,898	1.3	1.2	1.3

Total Live Births
517
28,550
40,976
77,518
2,524
1,082
151,167



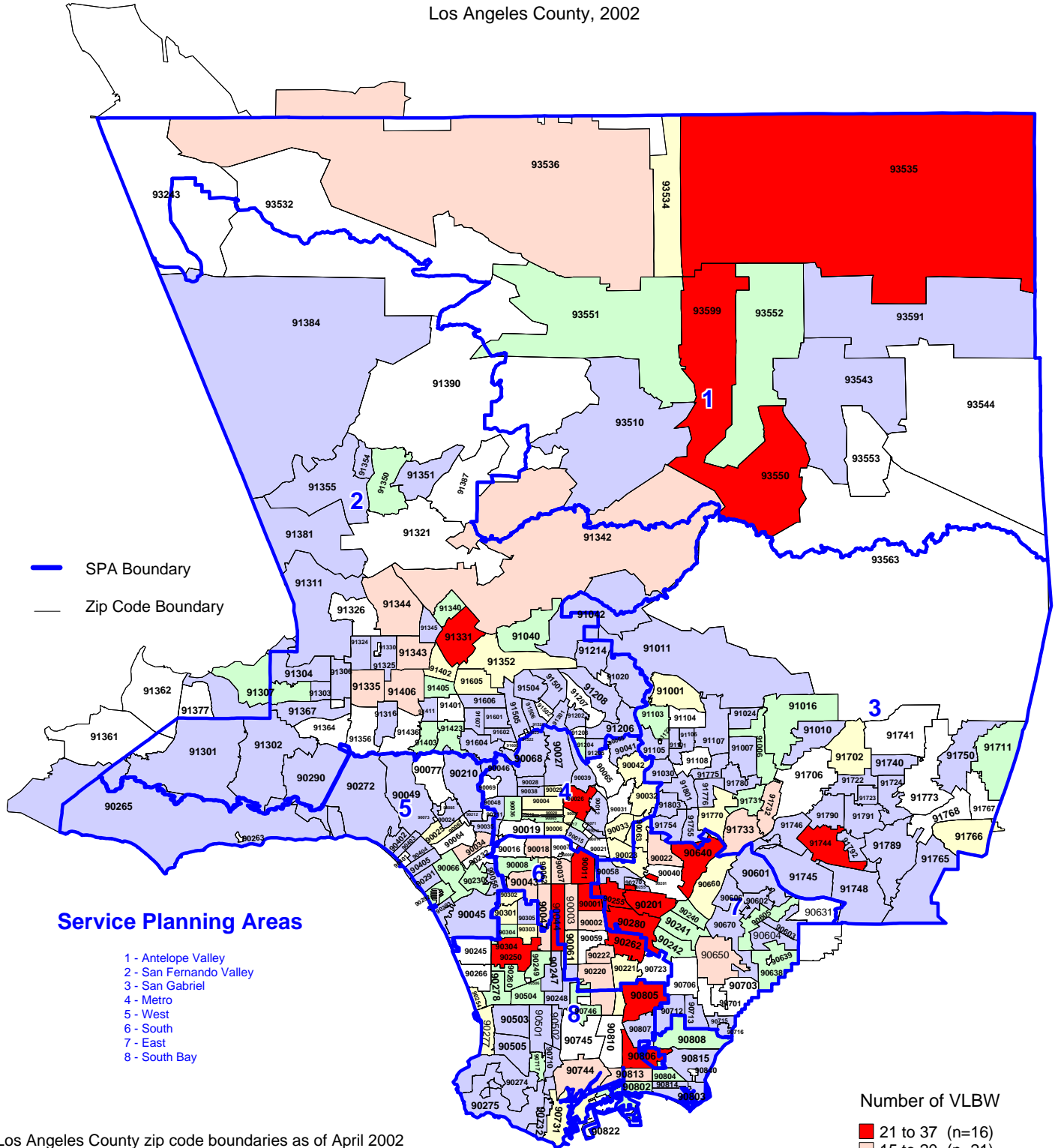
Year 2010 Objective: Reduce very low birthweight births to an incidence of no more than 0.9 percent of live births.

Note: Very low birthweight is defined as weight less than 1,500 grams at birth.

Source: California Department of Health Services, Center for Health Statistics, Vital Statistics, 2002.

Number of Very Low Birthweight (VLBW) Live Births by Zip Code* and Service Planning Area (SPA)

Los Angeles County, 2002



* Los Angeles County zip code boundaries as of April 2002

Total number of live births in Los Angeles County, 2002 = 151,167

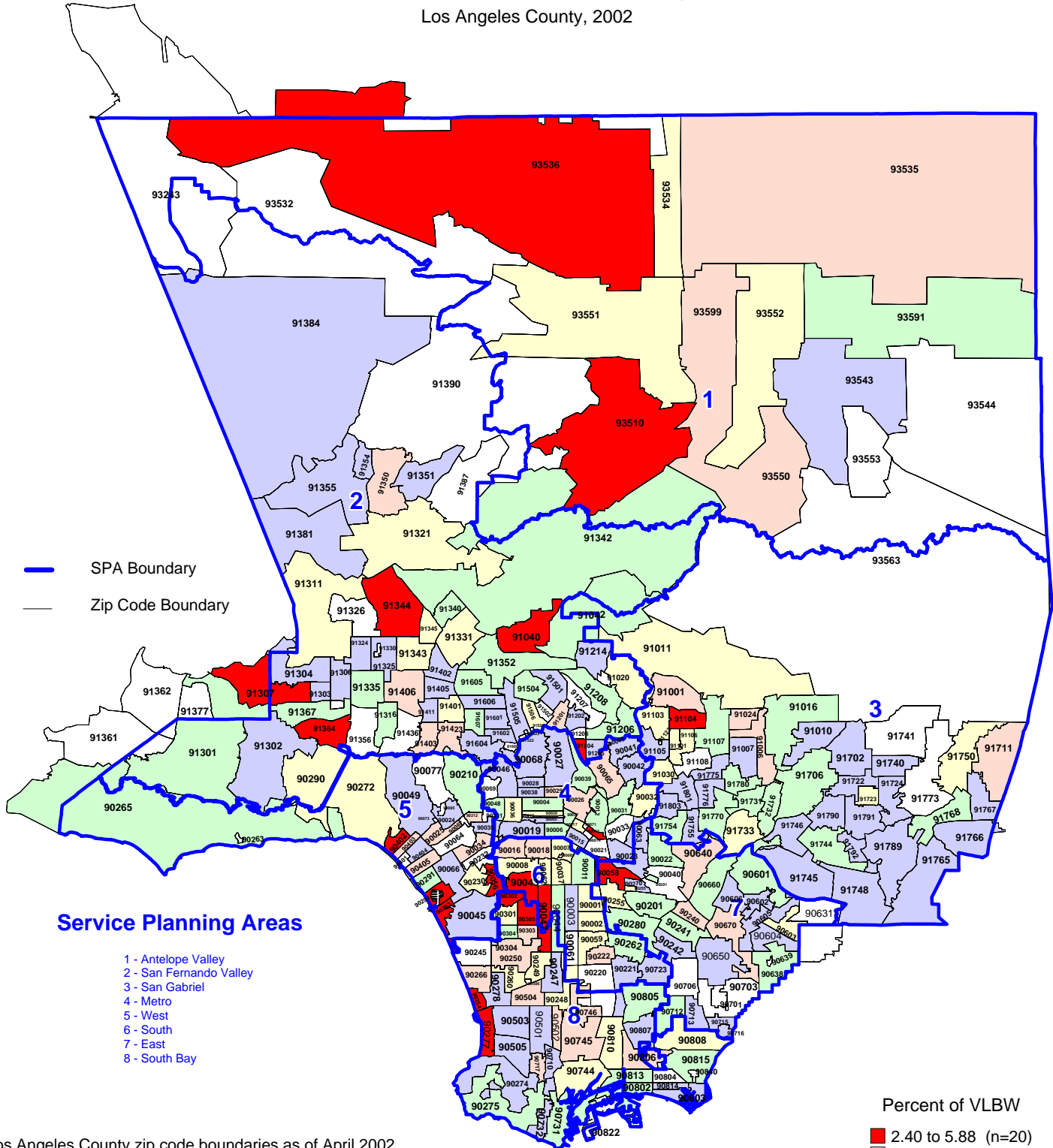
Note: Very low birthweight is defined as weight less than 1,500 grams at birth

Source: California Department of Health Services,
Center for Health Statistics, Vital Statistics, 2002

n = total number of zip codes in range

Percent of Very Low Birthweight (VLBW) Live Births by Zip Code* and Service Planning Area (SPA)

Los Angeles County, 2002



* Los Angeles County zip code boundaries as of April 2002

Total number of live births in Los Angeles County, 2002 = 151,167

Note: Percent of very low birthweight is defined as weight less than 1,500 grams at birth per 100 live births

n = total number of zip code in range

Source: California Department of Health Services, Center for Health Statistics, Vital Statistics, 2002

