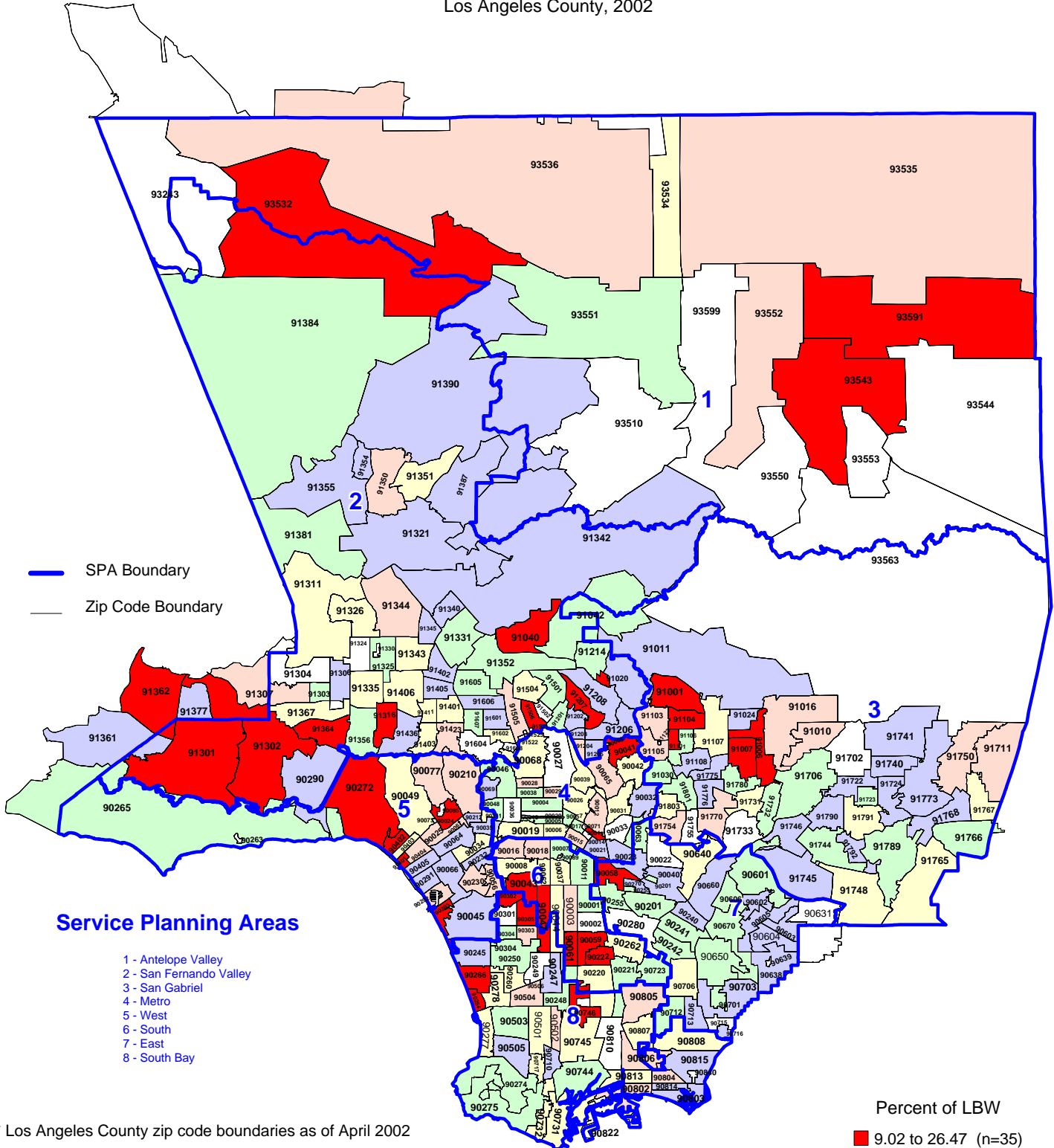


# Percent of Low Birthweight (LBW) Live Births by Zip Code\* and Service Planning Area (SPA)

Los Angeles County, 2002



\* Los Angeles County zip code boundaries as of April 2002

Total number of live births in Los Angeles County, 2002 = 151,167

Note: Percent of low birthweight is defined as weight less than 2,500 grams at birth per 100 live births

Source: California Department of Health Services, Center for Health Statistics, Vital Statistics, 2002



n = total number of zip codes in range