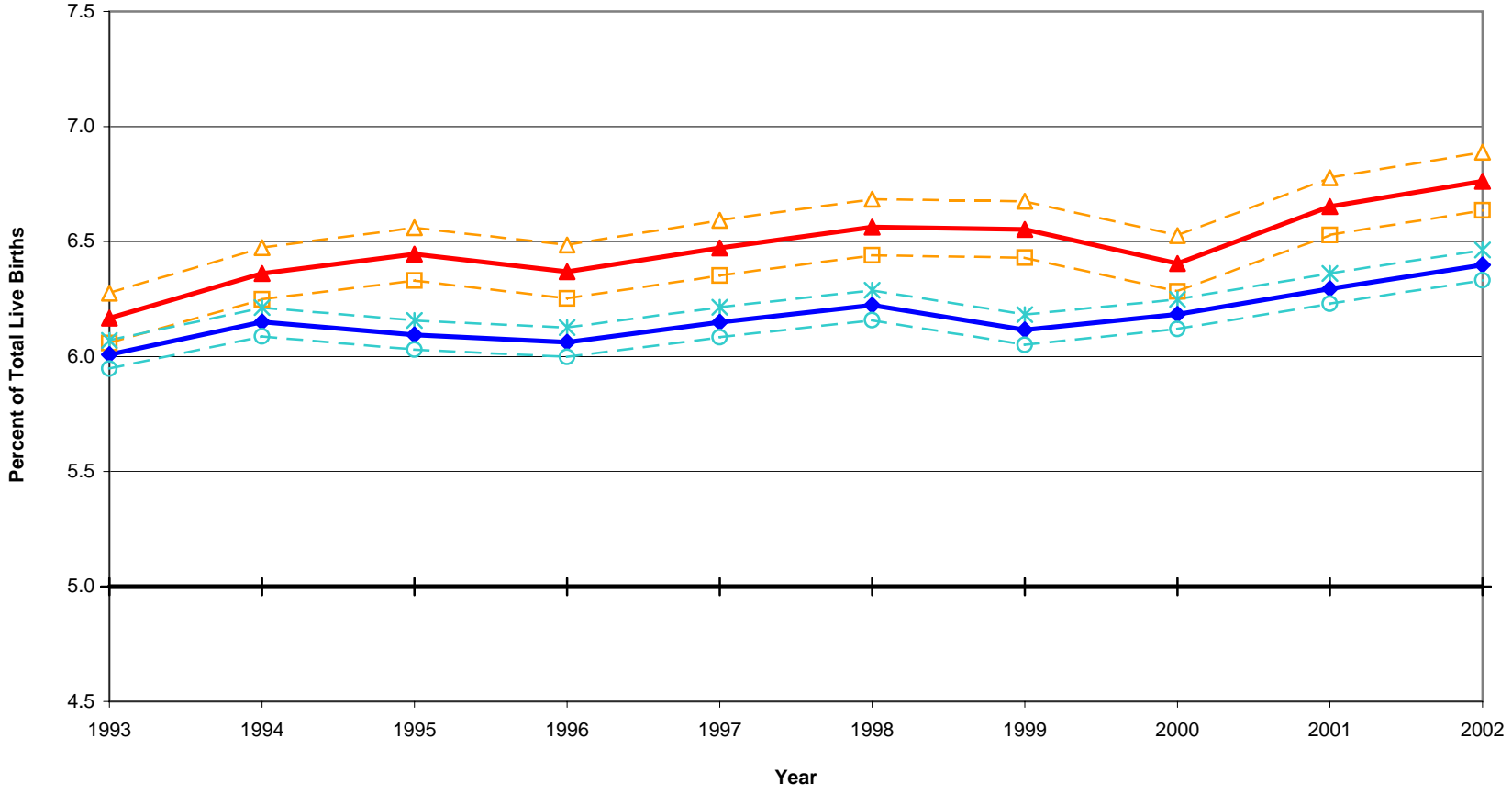


Percent of Low Birthweight California vs. Los Angeles County, 1993-2002

-△- County Upper 95% CL
 -▲- County Point Estimate
 -□- County Lower 95% CL
-✱- State Upper 95% CL
 -◆- State Point Estimate
 -○- State Lower 95% CL
-+- Healthy People 2010



Year 2010 Objective: Reduce low birthweight births to an incidence of no more than 5 percent of live births.
 Source: California Department of Health Services, Center for Health Statistics, Vital Statistics, 1993-2002.