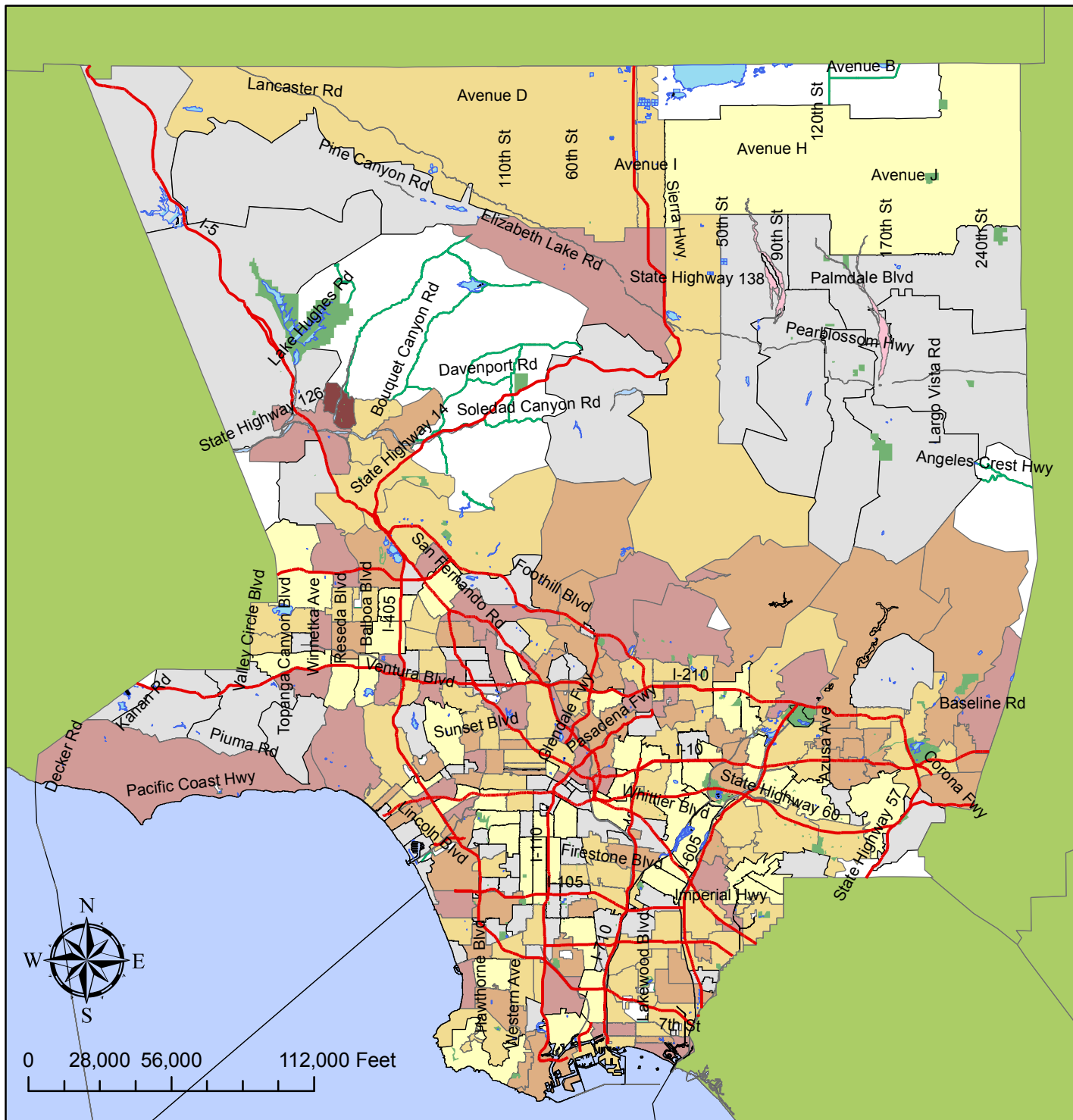
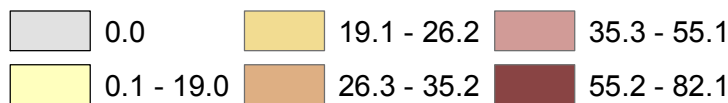


Los Angeles County Fall Death Rates by Zip Code, 1998-2007 (65 and older)

Fall Death Rate



Data Information:

- Note 1: The population shown is the 2000 US Census Population. A constant population is assumed for the entire 10 year period.
- Note 2: The rates shown are the annual rate per 100,000 population.
- Note 3: Zips with <5 deaths have the number of injuries suppressed.
- Note 4: Death data is from the Death Statistical Master File, California Dept of Health Services, Center for Health Statistics
- Note 5: Fall death rates for 64 zip codes could not be calculated due to lack of census population.