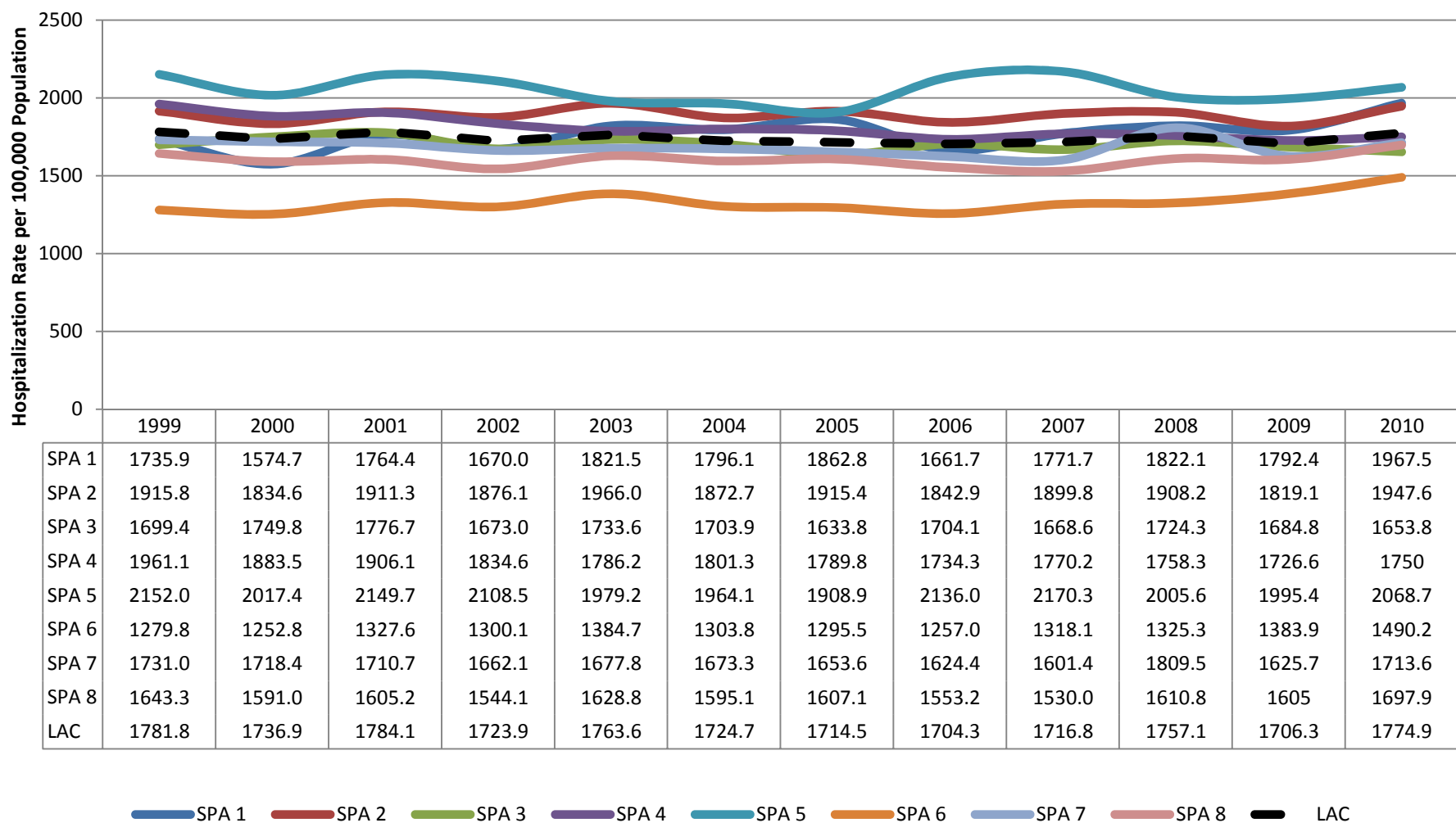


Non Fatal Unintentional Fall Hospitalization Rates Among 65+ Year Old Residents of Los Angeles County by SPA and Year, 1999-2010



Data Sources: Office of Statewide Health Planning and Development, Hospital Discharge Data
 Population Estimates & Predictions (PEPS) Data, Los Angeles County Office of Urban Research