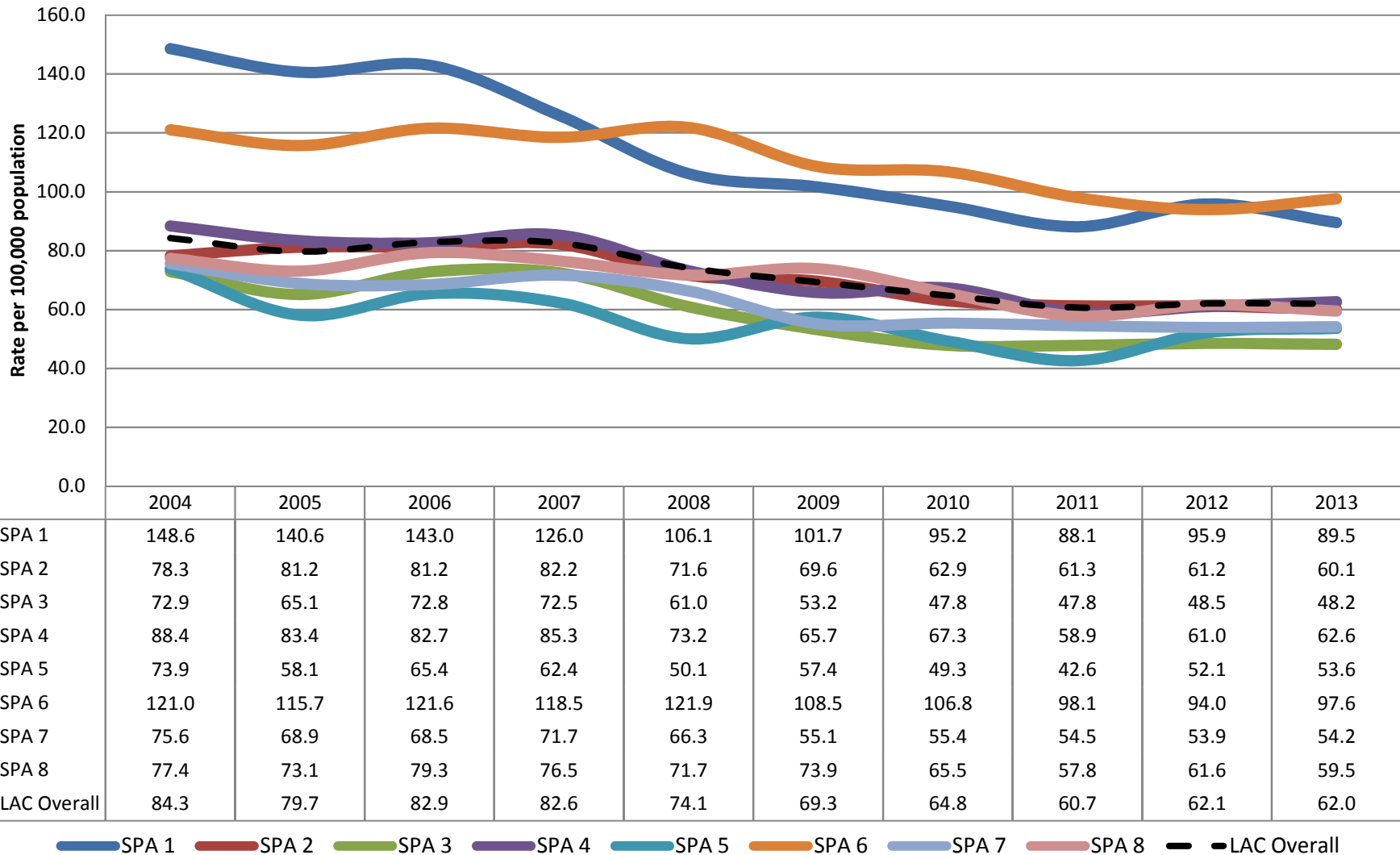


Age Adjusted Rate per 100,000 of Non-Fatal Hospitalizations, for all Unintentional MV Traffic Injuries, by SPA of Residence and Year



Data Sources: Office of Statewide Health Planning and Development, Hospital Discharge Data

Population Data: July 1, [2004-2009] Smoothed Population Estimates, prepared by the Office of Health Assessment and Epidemiology, Los Angeles County Department of Public Health

July 1, [2010-2013] Population Estimates, prepared by Hedderson Demographic Services for Los Angeles County Internal Services Department.

Prepared by Los Angeles County Department of Public Health, Division of Chronic Disease and Injury Prevention, Injury and Violence Prevention Program. September 2015.