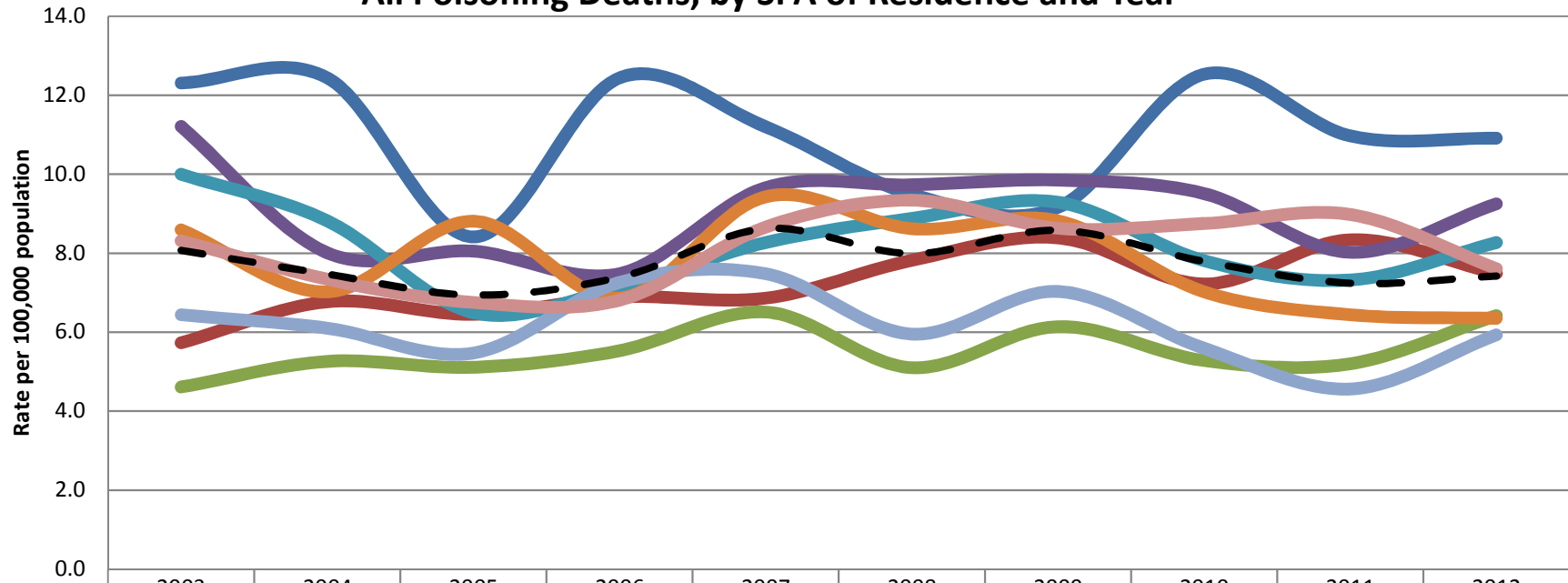


## Age Adjusted Mortality Rate per 100,000, All Poisoning Deaths, by SPA of Residence and Year



	2003	2004	2005	2006	2007	2008	2009	2010	2011	2012
SPA 1	12.3	12.4	8.4	12.4	11.2	9.5	9.2	12.5	11.0	10.9
SPA 2	5.7	6.8	6.5	6.9	6.9	7.8	8.4	7.2	8.3	7.5
SPA 3	4.6	5.3	5.1	5.5	6.5	5.1	6.1	5.3	5.2	6.4
SPA 4	11.2	8.0	8.1	7.5	9.7	9.7	9.9	9.5	8.0	9.3
SPA 5	10.0	8.8	6.5	7.1	8.3	8.9	9.3	7.8	7.3	8.3
SPA 6	8.6	7.0	8.8	6.9	9.4	8.6	8.8	7.0	6.4	6.4
SPA 7	6.4	6.1	5.5	7.3	7.5	6.0	7.0	5.6	4.6	5.9
SPA 8	8.3	7.3	6.8	6.8	8.7	9.3	8.6	8.8	9.0	7.6
LAC Overall	8.1	7.5	6.9	7.4	8.6	8.0	8.6	7.8	7.2	7.4

— SPA 1   
 — SPA 2   
 — SPA 3   
 — SPA 4   
 — SPA 5   
 — SPA 6   
 — SPA 7   
 — SPA 8   
 - - LAC Overall

Data Sources: Death Statistical Master File, California Department of Health, Center for Health Statistics

Population Data: July 1, [2003-2009] Smoothed Population Estimates, prepared by the Office of Health Assessment and Epidemiology, Los Angeles County Department of Public Health,  
July 1, [2010-2012] Population Estimates, prepared by Hedderson Demographic Services for Los Angeles County Internal Services Department.

Prepared by Los Angeles County Department of Public Health, Division of Chronic Disease and Injury Prevention, Injury and Violence Prevention Program, September 2015.