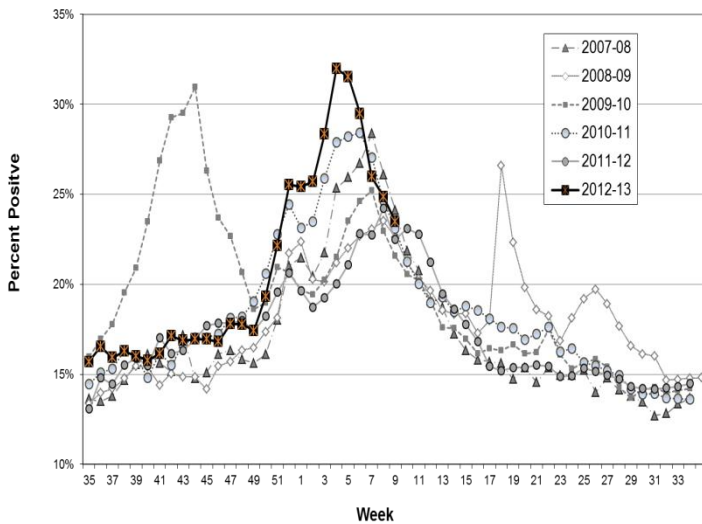


## Influenza Still High in Los Angeles County

Overall respiratory illness in emergency departments and influenza has fallen but is higher than usually seen at this time of year (Figures 1 and 3). The percent of respiratory specimens testing positive for influenza and/or RSV is still greater than 10% each so clinicians must continue to consider these pathogens when evaluating patients. Alert readers will note two (or more!) interesting trends in the data below: 1) the percent of influenza B is increasing relative to influenza A (Table 1)—this is due to the overall decrease in influenza A and the relatively stable levels of influenza B; and 2) the addition of coronavirus detections in Figure 2. Coronaviruses are increasingly recognized as pathogens that may cause significant morbidity and it is important for clinicians to be aware of the panoply of viruses in Los Angeles County that can cause “influenza-like illness.” More information about coronaviruses may be found at this CDC website: <http://www.cdc.gov/coronavirus/index.html>.

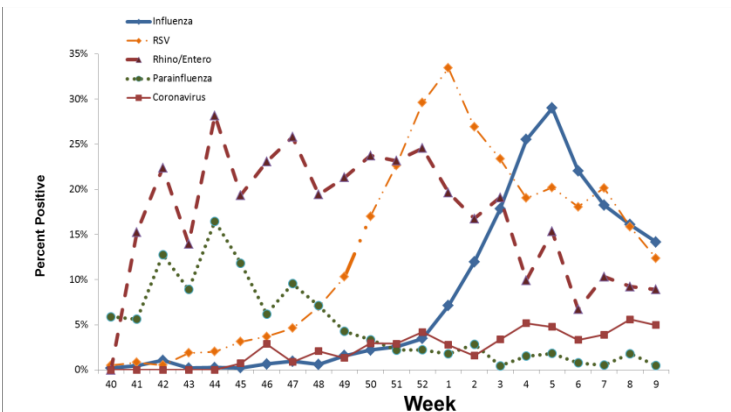
**Figure 1: Respiratory Illness ED Visits in LA County (2007-2013)**  
Percent Positive Visits by MMWR Surveillance Week



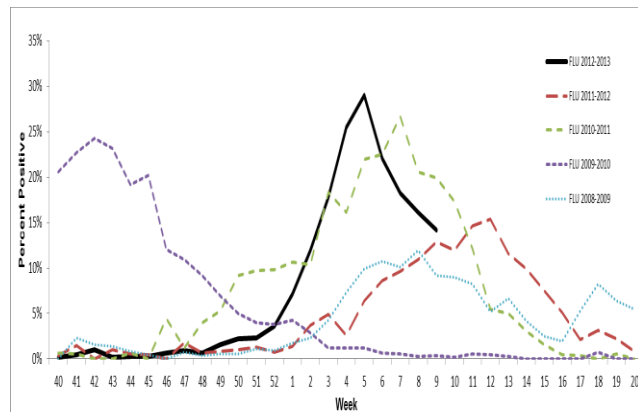
**Table 1: Surveillance Summary for LA County (2012-2013)**  
MMWR Surveillance Week 9

LA County Surveillance Summary	Week 9	2012-2013 Season YTD
Positive Flu Tests / Total Tests (Percent Positive Flu Tests)	183/1293 (14.2%)	
Percent Flu A / B	56/44	
Positive RSV Tests / Total Tests (Percent Positive RSV Tests)	117/945 (12.4%)	
<b>Respiratory Outbreaks:</b>		
Community	7	57
Skilled Nursing Facilities	2	22
Flu Deaths, Confirmed (Pediatric Flu Deaths, Confirmed)		23 (0)

**Figure 2: Respiratory Viruses in LA County (2012-2013)**  
Percent Positive Lab Reports by MMWR Surveillance Week



**Figure 3: Influenza in LA County (2008-2013)**  
Percent Positive Lab Reports by MMWR Surveillance Week



The prevalence of influenza and RSV are slowly decreasing though the prevalence of each is >10% at this time. We have added coronaviruses to this chart to highlight their prevalence in Los Angeles County. Coronaviruses may cause a spectrum of respiratory illness from mild to severe.

Influenza activity at this time in 2013 is currently higher than all but 1 of the past 4 years and we expect that there will be several more weeks of significant influenza activity. As can be seen in Figure 3, influenza is commonly detected in specimens even into May (weeks 17-20).