

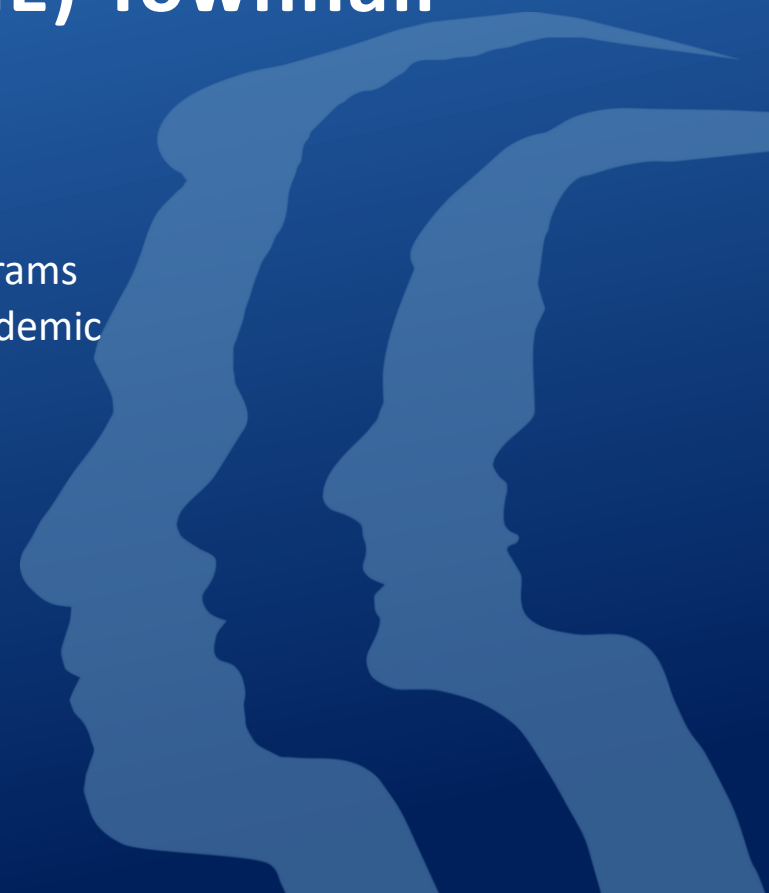


Ending the HIV Epidemic (EHE) Townhall

September 16, 2020

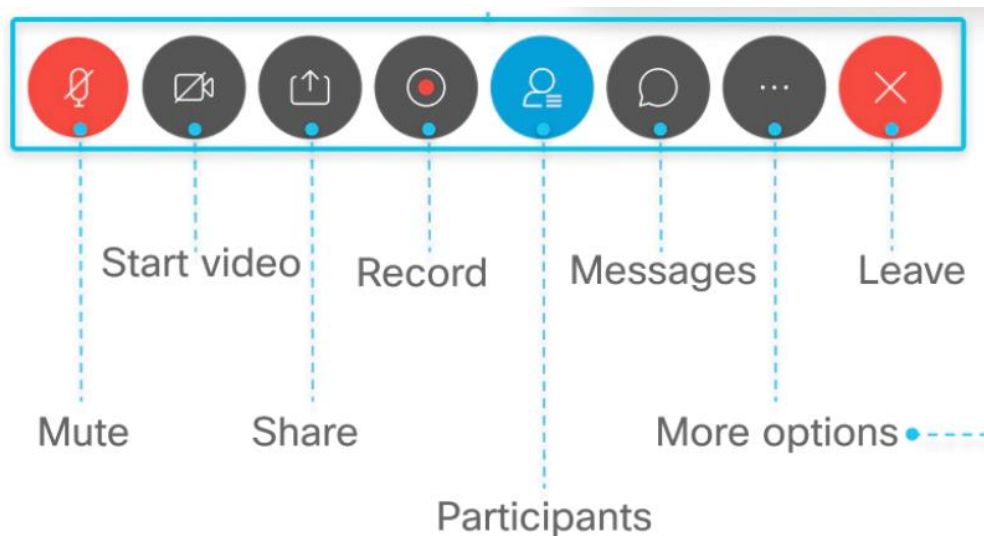
Mario J. Pérez, MPH, Director, Division of HIV and STD Programs
Julie Tolentino, MPH, Program Manager, Ending the HIV Epidemic

Please note: We will begin around 10:10 am to allow attendees time to join the meeting



Logistics for our new virtual normal

- Please mute yourself
- If you'd like to make a comment or ask a question, please use the Q&A function at the bottom of your screen
- This meeting will be recorded





Today's Agenda

- **Welcome and Opening Remarks**

Mario J. Pérez, MPH, Director, Division of HIV and STD Programs

- **Ending the HIV Epidemic Plan & Public Comment Launch**

Julie Tolentino, MPH, Program Manager, Ending the HIV Epidemic

- **Call to Action**

Mario J. Pérez, MPH, Director, Division of HIV and STD Programs

- **Questions & Discussion**

Submit questions through Q&A function



Welcome and Opening Remarks

Mario J. Pérez, MPH

Director, Division of HIV and STD Programs

County of Los Angeles, Department of Public Health



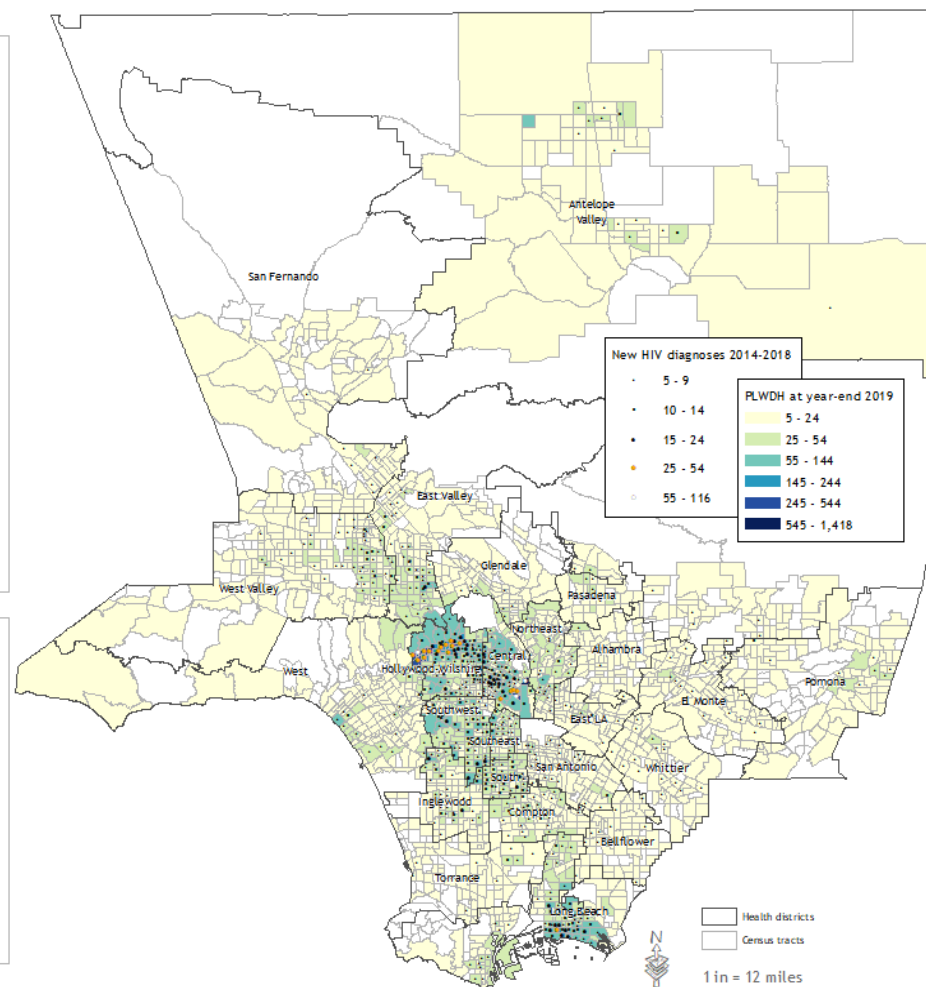
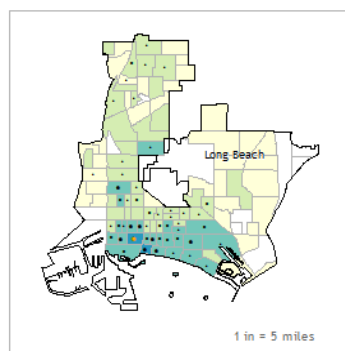
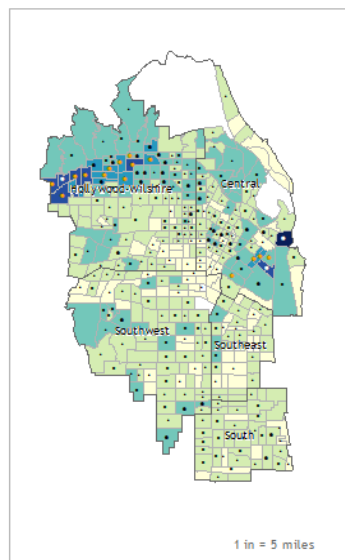
Los Angeles County is vast and diverse.



- Over 4,000 square miles
 - 88 cities
 - 26 health districts
 - Over 100 unincorporated areas
 - Urban, suburban, and rural areas
-
- Most populous county in the U.S. with approximately 10 million residents
 - Greater population than 42 individual states
 - One of the most racially/ethnically diverse county in the U.S.

Key HIV metrics in Los Angeles County

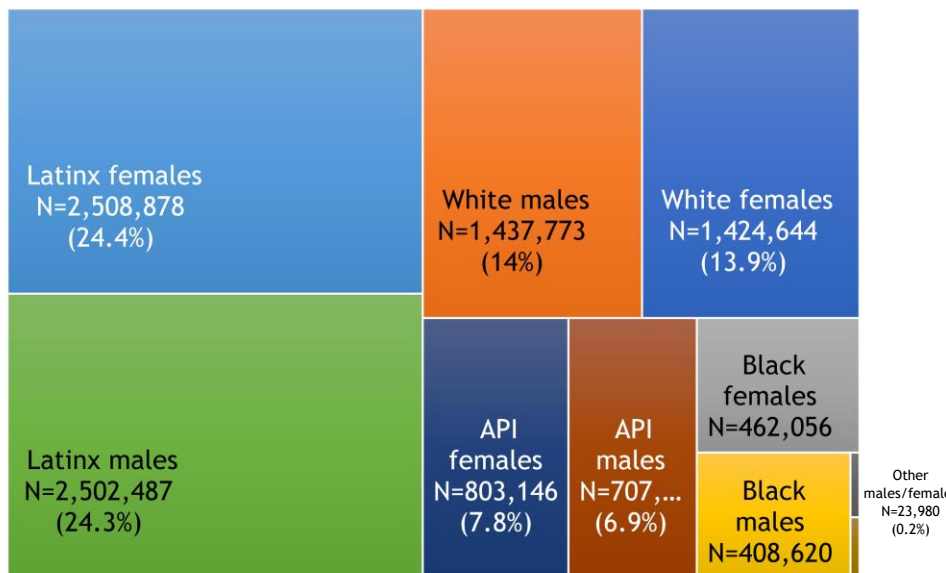
- 57,700 people living with HIV
- 1,700 new transmissions per year
- 6,400 unaware of their HIV-positive status
- Highest rates of transmission in Hollywood-Wilshire, Central and Long Beach health districts



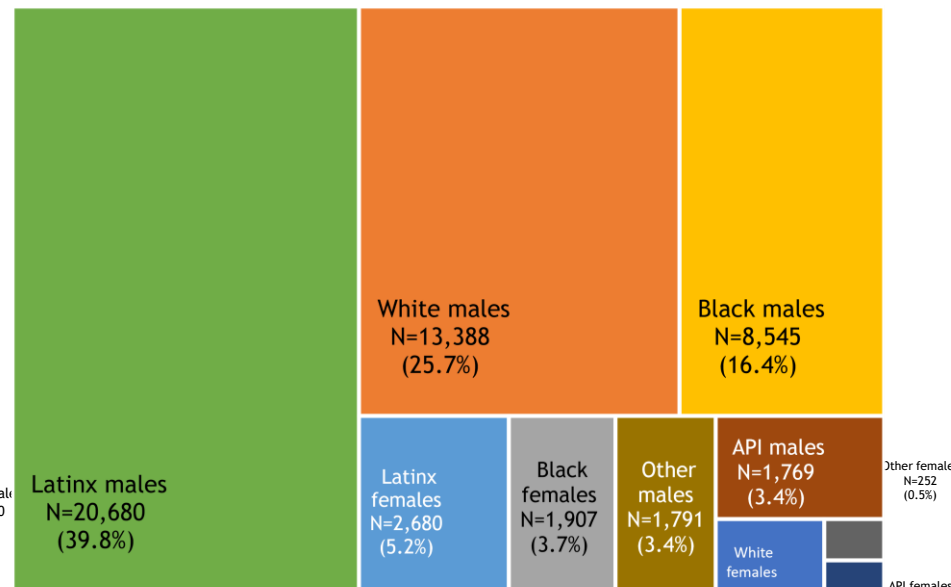


LA County Demographics vs. Demographics of People living with HIV

Sex¹ and race/ethnicity among Los Angeles County (LAC) residents in 2018 (N=10,278,834)²



Sex¹ and race/ethnicity among persons living with diagnosed HIV at year-end 2019, LAC (N=52,004)



¹ Population estimates are not currently available for transgender persons.

² Based on the 2018 population estimates provided by LAC internal Services Department and contracted through Hedderson Demographic Services.

¹ Population estimates are not currently available for transgender persons, therefore male and female categories are based on biological sex at birth.

The Latinx population represents the largest group in the County, followed by the White community. Black men and women represent 8% of the total County population.

Latinos represent 40% of people living with diagnosed HIV (PLWDH) followed by White (26%) and Black males (16%). These groups represent >80% of PLWDH in LA County.



Ending the HIV Epidemic: A Plan for America announced in 2019 with implementation beginning in 2020

Ending
the
HIV
Epidemic
A PLAN FOR AMERICA

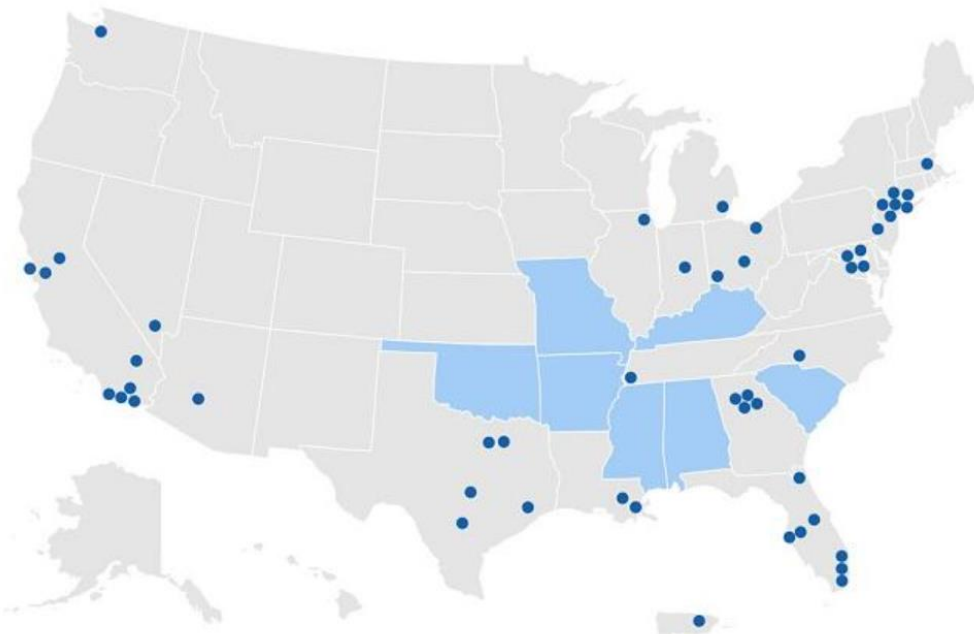
GOAL:
75%
reduction in new
HIV infections
by 2025
and at least
90%
reduction
by 2030.





FEDERAL PARTNERS

Collective action is necessary to achieve the national goal



Four key pillars were identified as part of Ending the HIV Epidemic initiative



Diagnose all people with HIV as early as possible.

Treat people with HIV rapidly and effectively to reach sustained viral suppression.



Prevent new HIV transmissions by using proven interventions, including pre-exposure prophylaxis (PrEP) and syringe services programs (SSPs).

Respond quickly to potential HIV outbreaks to get needed prevention and treatment services to people who need them.





We have an unprecedented opportunity to end the HIV epidemic in America

The time is *Now.*

#EndHIVEpidemic

Right Data

- Ability to gather information related to geographic locations and populations affected by HIV

Right Tools

- Advances in biomedical and scientific research
- Evidence based models of HIV care and prevention

Right Leadership

- Revitalized energy from federal and local partners



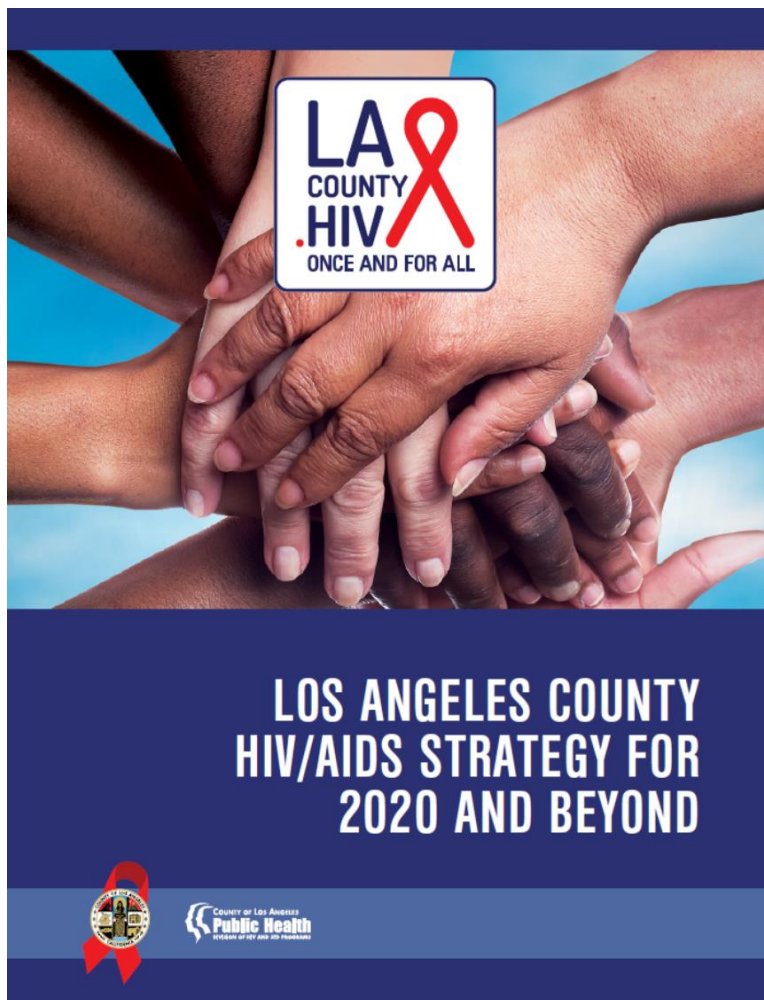
Ending the HIV Epidemic Plan & Public Comment Launch

Julie Tolentino, MPH

Program Manager, Ending the HIV Epidemic
Division of HIV and STD Programs



Transitioning from the LA County HIV/AIDS Strategy to EHE Plan



Key Dates

- Nov. 2017: LACHAS released
- Feb. 2019: Ending the HIV Epidemic (EHE) announced
- 2019 – 2020: One-year EHE planning grant
- 2020: HRSA and CDC grants awarded to LAC
- Dec. 2020: Local EHE Plan due to CDC



Leading Indicators by EHE Pillar for Los Angeles County



Diagnose

- HIV diagnoses
- Knowledge of status



Treat

- Linkage to Care
- Viral suppression



Prevent

- PrEP Coverage



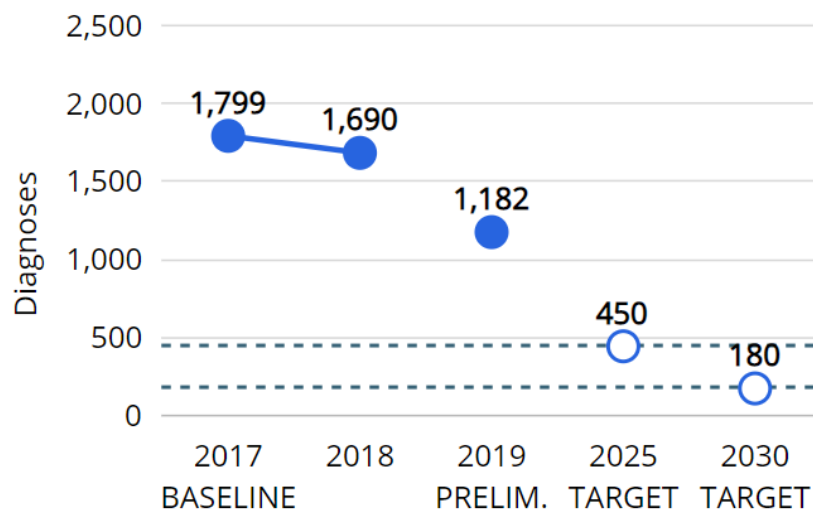
Respond

- Monitor outbreaks
- Partner Services

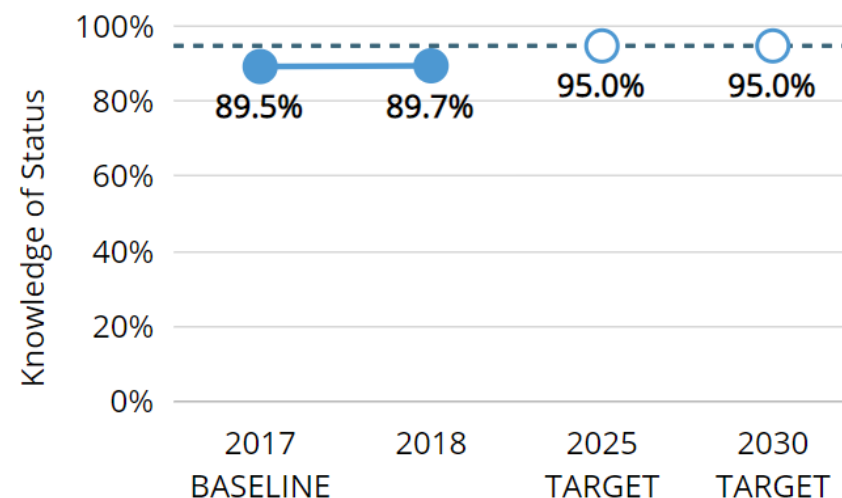
Leading Indicators for Pillar 1: Diagnose

1. Reduce annual number of HIV diagnoses
2. Increase the percentage of PLWH who are aware of their HIV status to 95%

Annual number of HIV diagnoses



Percentage of PLWH aware of diagnosis



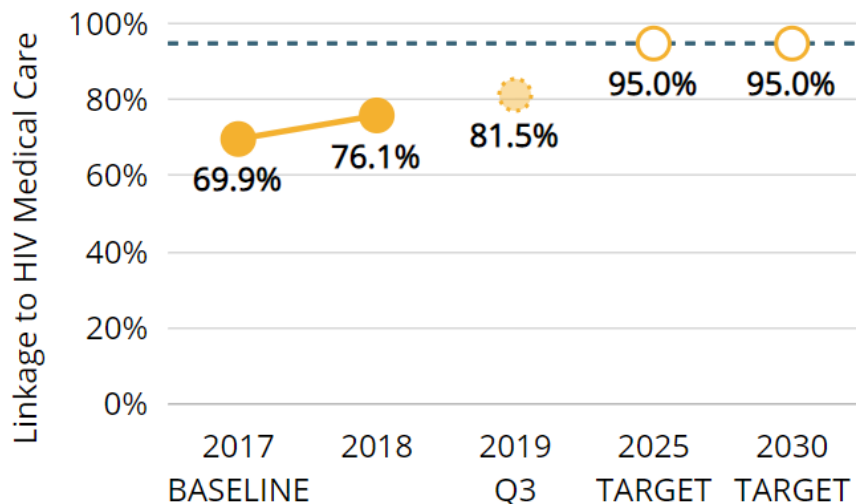
<https://ahead.hiv.gov/locations/los-angeles-county/>



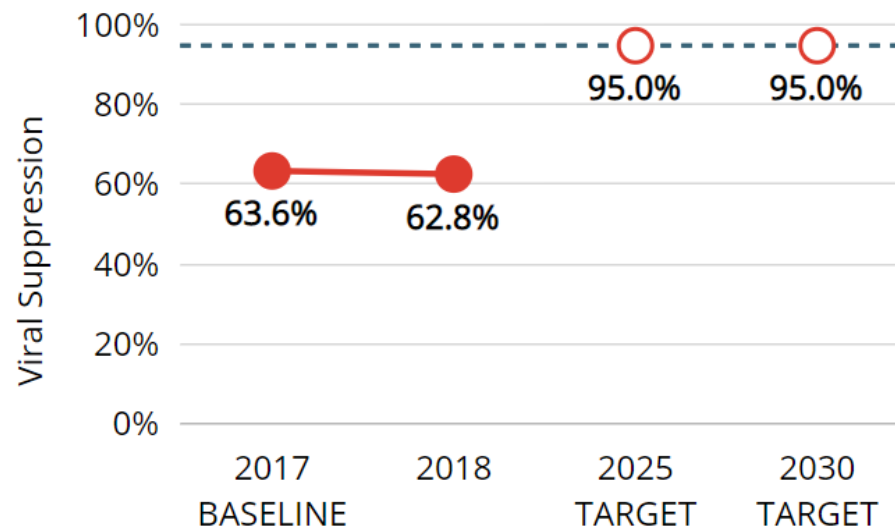
Leading Indicators for Pillar 2: Treat

1. Increase the proportion of people diagnosed with HIV who are linked to HIV care within 1 month of diagnosis to 95%
2. Increase the proportion of diagnosed PLWH who are virally suppressed to 95%

Percentage newly diagnosed linked within 1 month

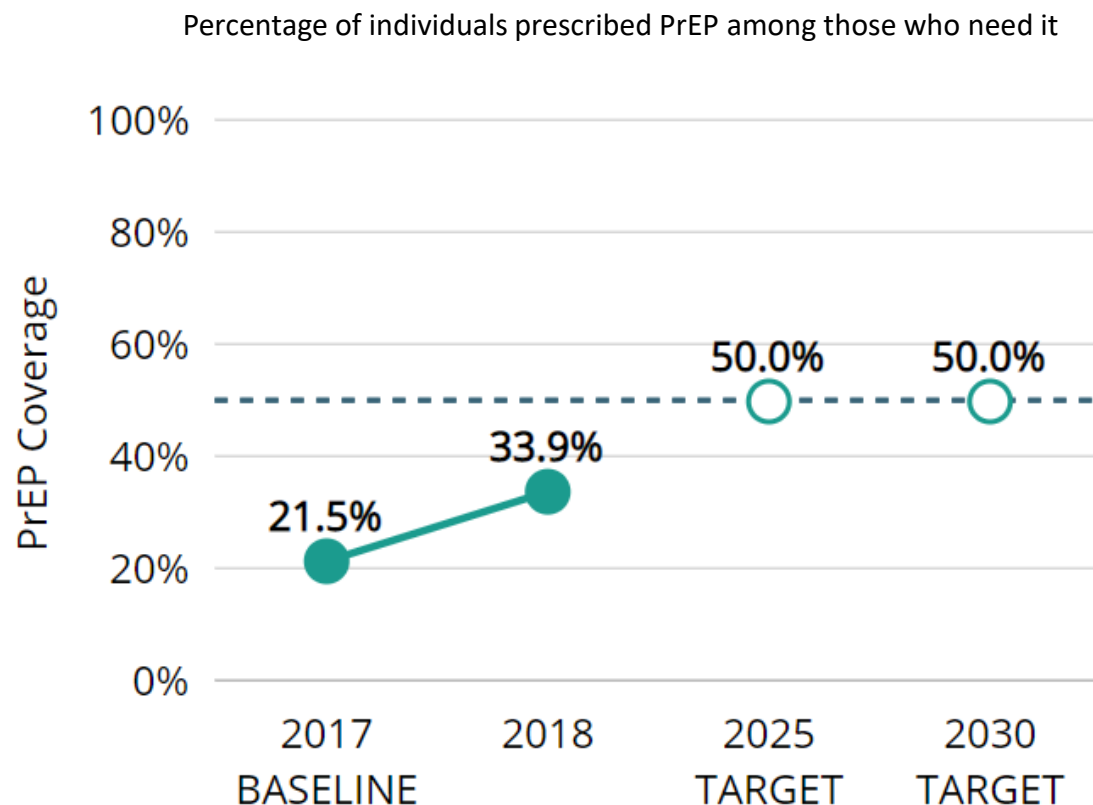


Percentage PLWH who are virally suppressed



Leading Indicators for Pillar 3: Prevent

1. Increase the proportion of persons prescribed PrEP in priority populations to at least 50%

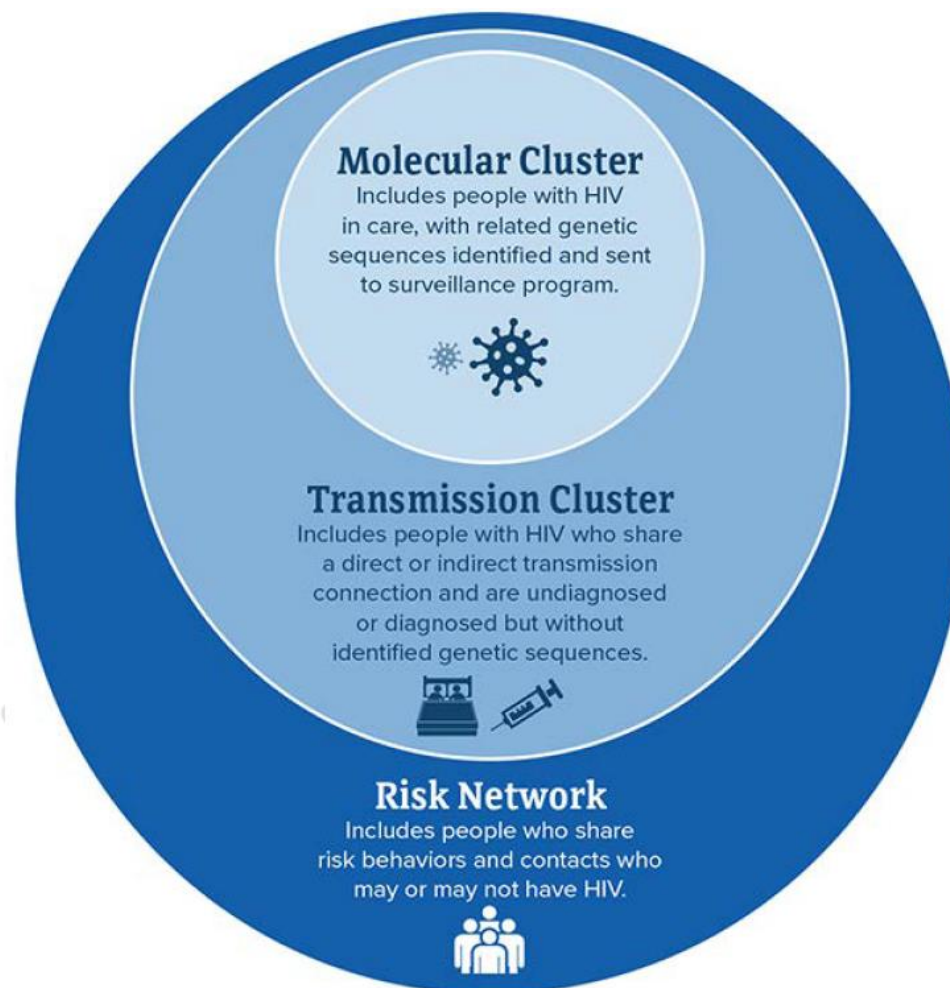


72,700
MSM*, transwomen,
ciswomen & injection
drug users would benefit
from PrEP

50,660
Black & Latinx people
who would benefit
from PrEP

Leading Indicators for Pillar 4: Respond

1. Develop a plan to identify and monitor HIV outbreaks
2. Increase the proportion of people living with HIV that are interviewed for partner services within 7 days of diagnosis to at least 85%



Strategies & Key Partners for EHE Pillars



Diagnose



Treat



Prevent



Respond



Diagnose all people with HIV as early as possible.

Strategies

- Increase routine opt out HIV testing in healthcare and institutional settings, including jails
- Increase HIV testing programs in non-healthcare settings including home testing
- Increase yearly re-screening for clients at elevated risk for HIV

Key Partners

- FQHCs and community health centers
- Emergency Departments
- HIV and STD Testing Providers
- HIV Service Providers
- Academic medical provider training programs
- Building Healthy Online Communities – NASTAD
- LA County Sheriff Department



Treat people with HIV rapidly and effectively to reach sustained viral suppression.

Strategies

- Expand partner services to facilitate rapid ART and linkage to care
- Increase knowledge of and access to HIV services
- Assess mental health services to identify and address gaps
- Improve client experience by working with clinical staff
- Increase opportunities for telehealth
- Develop programming that provides services related to housing and emergency financial assistance

Key Partners

- Ryan White HIV service providers
- HIV medical providers outside of Ryan White network
- FQHCs and community health centers
- HIV & STD Testing Providers
- Housing, mental health, and substance use providers
- City public health departments



Prevent new HIV transmissions by using proven interventions, including PrEP and syringe services programs (SSPs).

Strategies

- Utilize data to better identify persons with indication for PrEP and link to services
- Expand PrEP service delivery & provider options, including telehealth and pharmacies
- Improve PrEP retention in care through provider and consumer programming
- Expand Syringe Services Programs

Key Partners

- FQHCs and community health centers
- PrEP Centers of Excellence
- HIV Service Providers, HIV and STD Testing Providers
- County STD clinics
- Community leaders and advocates
- County and City funded SSPs
- Pharmacies, general practitioners



Respond quickly
to potential HIV
outbreaks to get
needed
prevention and
treatment
services to people
who need them.

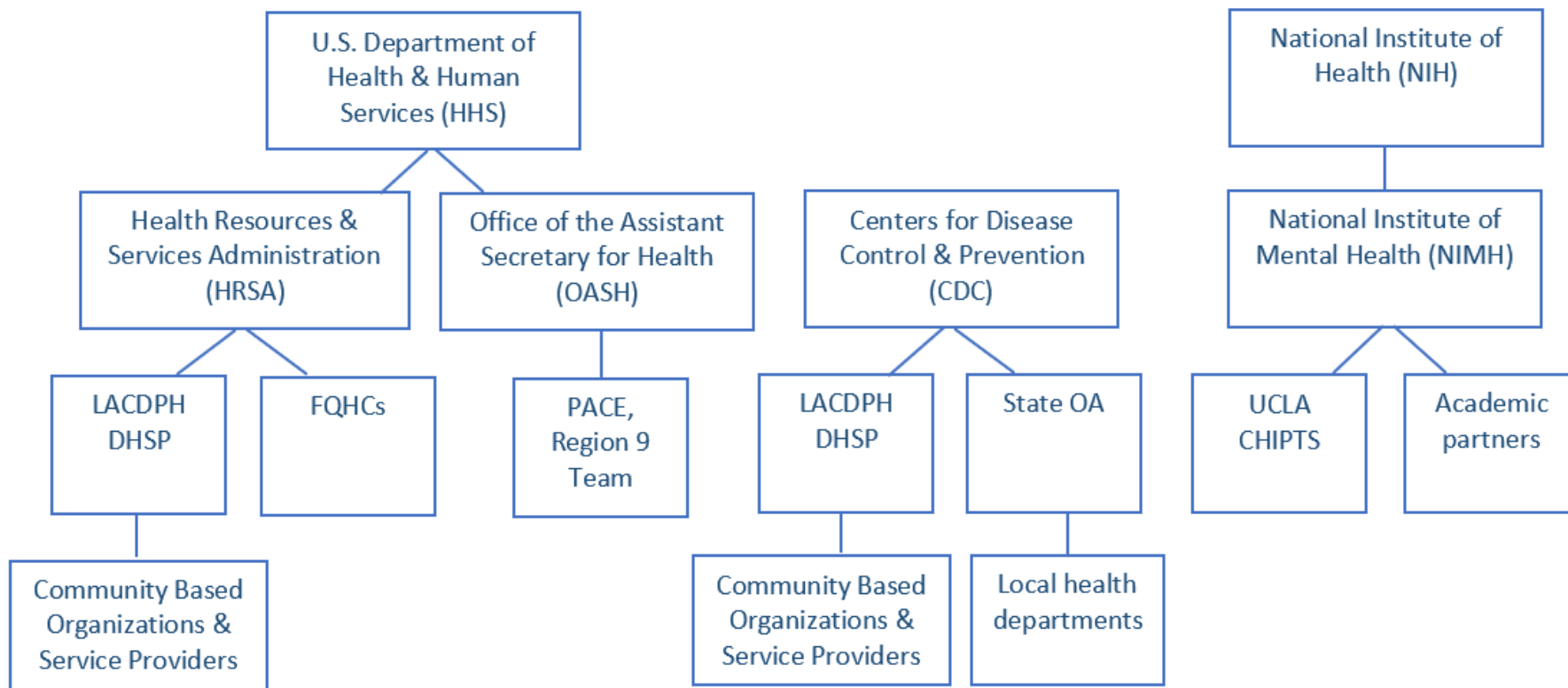
Strategies

- Develop a plan to increase capacity for cluster outbreak detection and response including protocol development and trainings
- Create and implement a protocol to ensure newly diagnosed people are interviewed for partner services
- Continue to build surveillance infrastructure at the public health department

Key Partners

- State Office of AIDS
- Other local health departments
- HIV Service Providers
- HIV & STD Testing Providers

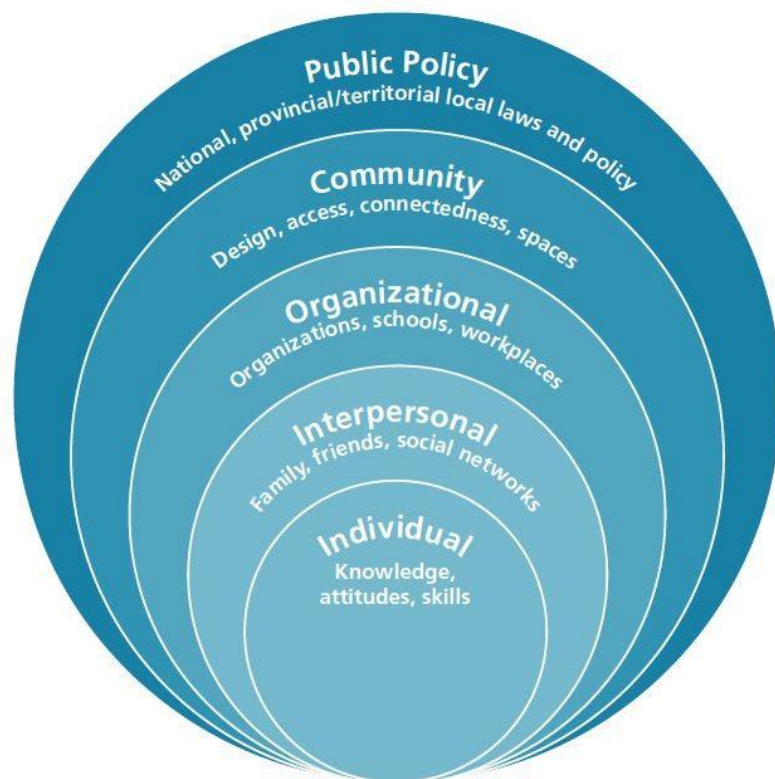
Snapshot of Ending the HIV Epidemic Funding & Partners in LA County



LACDPH DHSP is among several partners moving us towards our shared EHE goals

- Los Angeles County Commission on HIV
- Ending the Epidemics (ETE) Statewide Coalition
- Consumer Advisory Boards
- LAC PrEP/PEP Working Group

Community engagement is integral to ending the HIV epidemic.



A Social-Ecological Model for Physical Activity - Adapted from Heise, L., Ellsberg, M., & Gottemoeller, M. (1999)

Strategies

- Increase HIV education and awareness across the County
- Develop a program focused on community-led EHE projects and activities
- Develop new partnerships in the non-traditional HIV service sector
- Leverage existing partnerships to continue to strengthen and guide efforts and to ensure communities most impacted are engaged



We want your input! Provide feedback on the EHE Plan.

Submit feedback between September 16 - October 16, 2020

Draft Plan: <https://tinyurl.com/EHEplan>

Ending the HIV Epidemic in Los Angeles County

DRAFT PLAN

Public comment period: September 16 – October 16, 2020

Submit comments through the online feedback form:
<https://tinyurl.com/EHEfeedback>



Los Angeles County Ending the HIV Epidemic Plan Feedback

Pillar One: Diagnose people as early as possible

Pillar One Goals:

1. Reduce the annual number of new HIV infections to 90%
2. Increase the percentage of PLWH who are aware of their HIV status to 95%
3. Reduce annual number of HIV diagnoses by X%?

Find the text on page XX-XX in the plan.

Key Strategies:

Strategy 1A: Expand or implement routine opt-out HIV screening in healthcare and other institutional settings in high prevalence communities

Strategy 1B: Develop locally tailored HIV testing programs to reach persons in non-healthcare settings including home testing



EHE Plan Feedback continued

Submit feedback between
September 16 - October 16, 2020
Draft Plan:
<https://tinyurl.com/EHEplan>

Key Strategies:

Strategy 1A: Expand or implement routine opt-out HIV screening in healthcare and other institutional settings in high prevalence communities

Strategy 1B: Develop locally tailored HIV testing programs to reach persons in non-healthcare settings including home testing

Strategy 1C: Increase at least yearly re-screening of persons at elevated risk for HIV infection per CDC testing guidelines, in healthcare and non-healthcare settings

OK

1. Is there a strategy we are missing to reach these goals?



Ending the HIV Epidemic Steering Committee



Ending the HIV Epidemic (EHE) Steering Committee Members



Luis S. Garcia, Ed.D, MSW



Javontae Wilson



Astrid Reina, PhD



Devan Rose



Bridget Rogala, MPH, MCHES



Raniyah Copeland, MPH



Erin Jackson-Ward, MPH



Robbie Rodriguez



Lindsey P. Horvath



Barbara L. Roberts



Mariana Marroquin



Charles W. Robbins, MBA



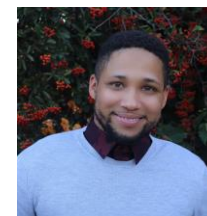
Jerry Abraham, MD, MPH, CMQ



Zelenne L. Cárdenas



Matthew Gray Brush, MPH



Ty Gaffney-Smith



Louise McCarthy, MPP



Call to Action

Mario J. Pérez, MPH

Director, Division of HIV and STD Programs





We have an unprecedented opportunity to end the HIV epidemic in America

The time is *Now.*

#EndHIVEpidemic

Right Data

- Ability to gather information related to geographic locations and populations affected by HIV

Right Tools

- Advances in biomedical and scientific research
- Evidence based models of HIV care and prevention

Right Leadership

- Revitalized energy from federal and local partners



Questions & Discussion

Please use the Q&A function to submit questions





We want your input! Complete the online feedback form for the EHE Plan
September 16 - October 16, 2020

<https://tinyurl.com/EHEplan>

Stay informed! Find more resources and info through these websites

Federal Websites

- Overview of Ending the HIV Epidemic: A Plan for America
<https://www.hiv.gov/federal-response/ending-the-hiv-epidemic/overview>
- AHEAD Dashboard – Track EHE Indicators by jurisdictions
<https://ahead.hiv.gov/locations/los-angeles-county/>
- Ready, Set, PrEP
<https://www.hiv.gov/federal-response/ending-the-hiv-epidemic/prep-program>

Local County Websites

- Stay tuned for local EHE updates at
www.LACounty.HIV
- HIV, STD, and sexual health info and resources in LA County
<https://getprotectedla.com/>
- Division of HIV and STD Programs
<http://www.publichealth.lacounty.gov/dhsp/>
- Los Angeles County Commission on HIV
<http://hiv.lacounty.gov/>



Acknowledgements

Thank you to the following people for their contribution and without whom the presentation would not be possible.

- Andrea A. Kim, Ph.D, MPH
- Sonali Kulkarni, MD, MPH
- Sophia Rumanes, MPH
- Wendy Garland, MPH
- LACDPH DHSP HIV/STD Surveillance Unit



We cannot solve our problems with the same thinking we used when we created them.
-Albert Einstein

Stay tuned for EHE updates at <https://www.LACounty.HIV/>

Ending the HIV Epidemic General Inbox
EHEInitiative@ph.lacounty.gov

Julie Tolentino, MPH
jtolentino@ph.lacounty.gov

